



BROOKDALE

County College of Monmouth

Assessment Newsletter – Spring 2010

Greetings!

This newsletter serves to acknowledge Brookdale faculty contributions to student learning outcomes assessment. Please take a moment to celebrate our shared dedication to teaching excellence and student learning. I look forward to continuing our projects together to achieve our College Vision where we “enable, empower and inspire” the students we serve.

Wishing you all the best in 2010!



Susan DeMatteo
Administrator of Assessment



On May 7th, 2009, the Art Department conducted a pilot student learning assessment project via the “Arts Alive” student art exhibit. The faculty created a rubric to assess an extensive sample of student works across all studio arts mediums. [Top Left: Dan Schroll, Top Right: Tony Blaser, Bottom Left: Marie Maber]

HIGHLIGHTS BY DIVISION

Arts & Communications



The Speech faculty, led by Martin McDermott, conducted the largest inter-rater reliability study of a course by full and part-time faculty using a rubric (SPCH 115, May 2008 and April 2009 by over 12 faculty).

Inter-rater Reliability: *The consistency with which two or more evaluators rate student work or performance.*

[From Left: Howard Miller, Barbara Baron, Martin McDermott, Carol Hunter, Jeff Shields, Cathy Blackburn, Dan Leyes]



English & Reading



First to submit assessment reports in the 2009-2010 academic year.

- ★ Creative Writing A.A. (09/30/09)
- ★ English A.A. (10/01/09)

[Left: Laura McCullough, Creative Writing]
[Right: Joe Varone, Literature]



Business & Technology



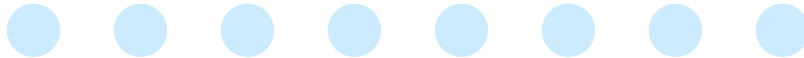
First to blueprint an Internship Supervisor Rating Scale to embed assessment of all program learning outcomes. (Automotive programs, AUTO 299 Internship)

Internship Supervisory Rating Scale: A scoring guide detailing the criteria used to rate student internship performance; provides evidence that a student learning outcome has been met.

[From Left: Paul Tucker, Doug Welsh]

The Paralegal Studies A.A.S. program was successfully reaccredited in 2009 by the American Bar Association, Standing Committee on Legal Assistants.

[From Left: Joe Zavaglia, John Costigan, Mike Sullivan, and Lillian Harris. Also pictured: Phyllis Nicholson, Senior Office Asst. Business & Technology]



Mathematics



First program to use its detailed curriculum map to guide 2009-10 assessments. (Mathematics A.S.)

100% of a program's career studies course syllabi have been revised, submitted and uploaded to WebAdvisor. (Mathematics A.S.)

Detailed PLO-to-Course Curriculum Maps: Documents that illustrate the integration and assessment of program and course-level student learning outcomes.

[From Left: Daniel Lopez, Barbara Tozzi, Oly Malpica Proctor]

Science & Health Sciences

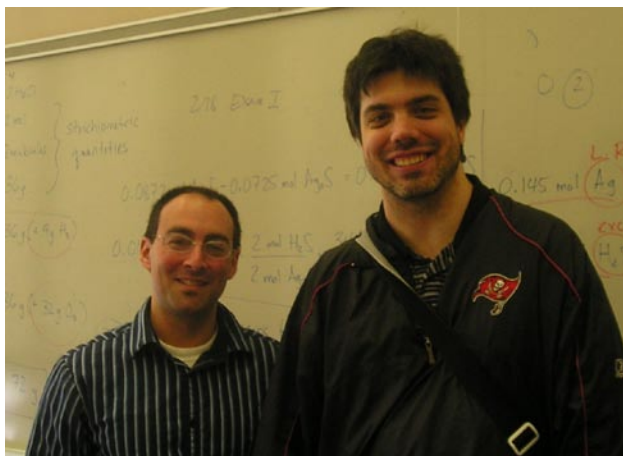
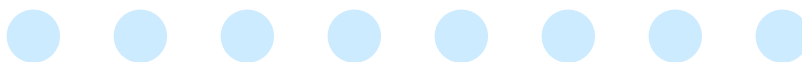


Programs with the longest history (over 15 years) of systematic student learning outcomes assessment where data is trended, aggregated, and analyzed over a three-year cycle. Results are compiled annually in the form of comprehensive faculty data books.

[Left: Carol Schedel and Terry Kohn]

- ★ Nursing A.A.S.
- ★ Respiratory Therapy A.A.S.
- ★ Radiologic Technology A.A.S.

[From Left: Pam Anania, Elizabeth Gaultieri, Nancy Lenaghan, Maryanne Krenz, Marilee Luick, Martha Noble, Rocel Besa, Barbara Burk, Linda Servidio, Sharon Stouter, and Bonnie Ross]

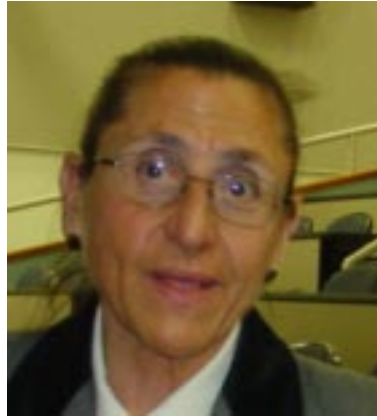


First program to blueprint all exams for all career studies courses in one academic year via the five-year review process. (Chemistry A.S. Degree)

Test Blueprint: Proposed structure of a test indicating the content and learning outcomes that will be included on the exam, and the number of items that should be included by topic and ability level.

[From Left: Eric Goll, Bill Boyke]

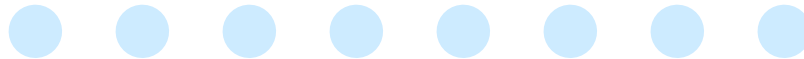
Social Sciences and Education



First program to use its detailed curriculum map to revise program learning outcomes for 2010-2011 (Criminal Justice A.S. Degree).

[Left: Ron Sopenoff]

[Right: Barbara Gonos]

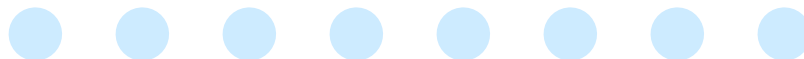


First programs to systematically develop and implement student self-reflection surveys to collect data on student learning.

- ★ History A.A. Option
- ★ International Studies A.A. Option

Student Self-Reflections: Asking students to reflect on what and how they have learned – to engage in metacognition.

[Right: Jane Scimeca, History Department Chair]





...and for recently completing Five-Year Program Reviews, the Award goes to:

- ★ Automotive Technology AAS Degree Options and Certificates
- ★ CADD AAS Program (Computer Aided Drafting & Design)
- ★ Culinary Arts AAS Program and Certificates
- ★ Math/Science AS Degree - Chemistry Option
- ★ Networking Info Tech AAS Program and Certificates
- ★ Social Sciences AA Degree - International Studies Option
- ★ Social Sciences AA Degree - Psychology Option

Spring 2010 Calendar

JANUARY 6 - 19

Complete Fall term data analysis and review of assessment status for dept. plan mid-year report.

FEBRUARY 1-14

Academic Division Deans meet with Dean of Academic Affairs to review mid-year report.

MARCH 14 - 20



SPRING BREAK

MAY 11

Complete all Spring term data collection for 2009-2010 assessment projects.

MAY 12 - 30

Complete Spring term data analysis and review of assessment status for dept. plan annual report.

MAY 30

Academic Division Deans submit completed 2009-2010 assessment projects on PAFS and CAFS to the Dean of Academic Affairs.

Assessment Web Site: <http://www.brookdalecc.edu/pages/388.asp>

Please send newsletter comments or suggestions to Susan DeMatteo:
sdematteo@brookdalecc.edu.