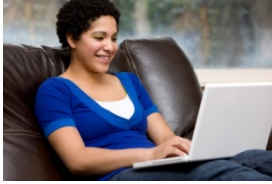


College @ Home – Distance Education Courses



Now you CAN be two places at one time. Distance Education brings College right into your home over the Internet.

Call 732-224-2089 for more information, or visit our Web site at www.brookdalecc.edu; click on Online Courses in the upper blue bar.

DE sections are online courses offered over the Internet; the courses are NOT SELF-PACED, so you must follow the course calendar of your instructor. You must purchase the designated textbook packet in order to have access

Students can take a combination of online and face-to-face courses. Or, earn a degree fully online in Business Administration, English, History, Liberal Studies, Psychology, or Social Sciences.

First time online students are strongly urged to attend a general orientation to become familiar with the course management system and understand distance education expectations.

General Orientations:

**Monday, August 31, 2009, 6:00 p.m., in the Student Life Center or
Thursday, September 3, 2009, 6:00 p.m., in the Student Life Center**



If you have a busy schedule and want to pursue college courses, distance education may be right for you. Take our online self-evaluation to see if you have the time management, reading and writing skills needed for success:

<http://ux.brookdalecc.edu/fac/tlc/self-eval/>

FALL 2009 Courses

ACCT 101 DE01A (Principles of Accounting I)

ACCT 102 DE01A (Principles of Accounting II)

ANTH 105 DE01A, DE02A (Cultural Anthropology)

ANTH 116 DE01A (intro to Physical Anthropology)

BIOL 126 DE01A (Exploring Bio: Cycles of Life)

BUSI 105 DE01A (Introduction to Business)

BUSI 165 DE01A (Computer Applications in Business)

BUSI 205 DE01A (Principles of Management)

BUSI 221 DE01A (Business Law I)

BUSI 222 DE01A (Business Law II)

CHEM 116 DE01A, DE02A, DE03A (Chemistry in Life)

CHEM 136 DE01A, DE02A (Inorganic, Organic, Biochemistry)

COMP 129 DE01A, DE02A, DE03A, DE04A, DE05A (Information Technology)

CRJU 101 DE01A (Intro to Criminal Justice)

CRJU 125 DE01A (Police Role in the Community)

CRJU 151 DE01A (Intro to Criminology)

ECON 105 DE01A (Macro Economics)

ECON 106 DE01A, DE02A (Micro Economics)

ECON 107 DE01A (Economics)

ECON 225 DE01A (Business Statistics)

ENGL 121 DE01A, DE02A, DE03A, DE04A, DE05A (English Composition: Writing Process)

ENGL 122 DE01A, DE02A, DE03A, DE04A (English Composition: Writing & Research)

ENGL 127 DE01A (Business Writing)

ENGL 155 DE01A, DE02A (The Short Story)

ENGL 158 DE01A (Intro to Literature)

ENGL 221 DE01A (Creative Writing)

ENGL 235 DE01A, DE02A, DE03A (World Literature I)

ENGL 245 DE01A, DE02A (American Literature I)

ENGL 246 DE01A (American Literature II)

HESC 115 DE01A, DE02A (Nutrition and Health)

HGEO 105 DE01A, DE02A, DE03A (Human Geography)

HIST 105 DE01A, DE02A, DE03A (World Civilization I)

HIST 106 DE01A, DE02A (World Civilization II)

HIST 135 DE01A, DE02A (American Civilization I)

HIST 136 DE01A, DE02A (American Civilization II)

HIST 137 DE01A (Recent American History)

HUMN 129 DE01A (Issues in Women's Studies)

HUMN 230 DE01A (Women and Science)

MATH 136 DE01A (Math for the Liberal Arts)

MATH 151 DE01A (Intermediate Algebra)

MRKT 101 DE01A (Intro to Marketing)

MUSI 115 DE01A (Music Appreciation)

MUSI 116 DE01A (History of Jazz)

NURS 160 DE01A (Introduction to Human Needs)

NURS 163 DE01A (Basic Needs in Community)

NURS 263 DE01A, DE02A, DE03A, DE04A, DE05A, DE06A, DE07A, DE08A, DE09A, DE10A, DE11A, DE12A, DE13A (Managing & Coordinating Nursing Care)

OADM 101 DE01A (Computer Keyboarding)

OADM 105 DE01A (Intro to Comp Keyboarding)

PHIL 115 DE01A, DE02A (Introduction to Philosophy)

PHIL 227 DE01A (Introduction to Ethics)

POLI 101 DE01A (Introduction to Political Science)

POLI 105 DE01A (American National Government)

PSYC 105 DE01A, DE02A (Intro to Psychology I)

PSYC 106 DE01A, DE02A, DE03A (Intro to Psychology II)

PSYC 206 DE01A, DE02A (Human Growth and Development I)

PSYC 208 DE01A, DE02A, DE03A (Life Span Development)

PSYC 209 DE01A (Theories of Personality)

PSYC 216 DE01A (Abnormal Psychology)

PSYC 218 DE01A, DE02A (Educational Psychology)

PSYC 245 DE01A (Intro to Quantitative Methods in Social Science Research)

SOCI 101 DE01A, DE02A, DE03A, DE04A (Principles of Sociology)

SOCI 105 DE01A, DE02A (Intercultural Communication)

SPAN 101 DE01A (Elementary Spanish I)

SPCH 115 DE01A, DE02A, DE03A (Public Speaking)

Please consult the Brookdale Community College catalog for course descriptions.





Registration Form – College @ Home Courses

Registration contingent upon course availability

Fall 2009

Registration Instructions:

Fill out the form below; list the courses you wish to take and sign the form. Enclose check or money order payable to Brookdale Community College and send to:

Norah Kerr-McCurry, Distance Education

Brookdale Community College

765 Newman Springs Road

Lincroft, New Jersey 07738

Name: _____ SS #: _____

Address: _____

Date of Birth: _____ Phone (home): _____ Phone (work) : _____

I realize that I may consult with a Student Development Specialist for course selections. In signing this form I certify that my legal address is as specified on this form.

Signature: _____ Date: _____

Course Name: _____

Course Number & Section: _____ Credits: _____

Course Name: _____

Course Number & Section: _____ Credits: _____

Course Name: _____

Course Number & Section: _____ Credits: _____

Course Name: _____

Course Number & Section: _____ Credits: _____

