




## Organizational Chart


- Board of Trustees ... 2
- President's Office ... 3 - 4
- Advancement ... 5
  - College Relations ... 6
- Academic Affairs ... 7
  - Educational Access and Innovation ... 8 - 11
  - STEM ... 12 - 16
  - Humanities ... 17 - 21
  - Business & Social Science ... 22 – 26
  - Health Science ... 27 - 29
- Continuing & Professional Studies ... 30 - 32
- Student Affairs ... 33
  - Enrollment Services ... 34 - 37
  - Student Services ... 38
  - Student Engagement... 39
- Planning & Institutional Effectiveness ... 40
- Human Resources & Organizational Safety ... 41 - 43
- Finance & Operations ... 44
  - Finance ... 45
  - Operations ... 46-48

# BROOKDALE COMMUNITY COLLEGE

## Board of Trustees




**CHAIR**  
Henry Cram




**PRESIDENT / SECRETARY  
TO BOARD OF TRUSTEES**  
David Stout




**VICE CHAIR**  
Francis Bret Kaufmann




**BOARD MEMBER**  
Paul Crupi




**BOARD MEMBER**  
Tracey Abby-White




**BOARD MEMBER**  
Dyese Davis




**BOARD MEMBER**  
Barbara Horl




**BOARD MEMBER**




**BOARD MEMBER**  
Latonya Brennan



**BOARD MEMBER**  
Austin Smith



**BOARD MEMBER**  
Marta Rambaud



**BOARD MEMBER**  
Lester W. Richens

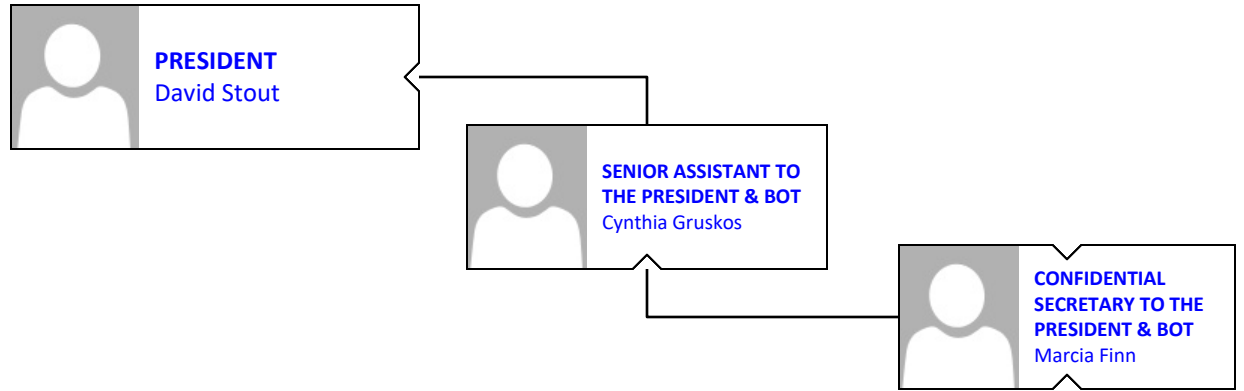


**BOARD MEMBER**  
Natalie Watson



**COLLEGE COUNSEL**  
Cleary, Giacobbe,  
Alfieri & Jacobs

**BROOKDALE COMMUNITY COLLEGE**  
**Office of the President**



**INTERIM VICE PRESIDENT,  
ACADEMIC AFFAIRS**  
Joan Scocco

**VICE PRESIDENT, FINANCE  
& OPERATIONS**  
Teresa Manfreda

**VICE PRESIDENT,  
ADVANCEMENT**  
Nancy Kaari

**VICE PRESIDENT, STUDENT  
AFFAIRS**  
Yesenia Madas

**ASSOCIATE VICE  
PRESIDENT, PLANNING &  
INSTITUTIONAL  
EFFECTIVENESS**  
Nancy Kegelman

**ASSOCIATE VICE  
PRESIDENT, STRATEGIC  
PARTNERSHIPS**  
Anita Voogt

**ASSOCIATE VICE  
PRESIDENT, HUMAN  
RESOURCES &  
ORGANIZATIONAL SAFETY**  
Patricia Sensi

**ASSOCIATE VICE  
PRESIDENT, OPERATIONS**  
James Episcopia

**EXECUTIVE DIRECTOR,  
COLLEGE RELATIONS**  
Kathleen Kamatani

**ACTING DEAN,  
CONTINUING &  
PROFESSIONAL STUDIES**  
Linda Roma

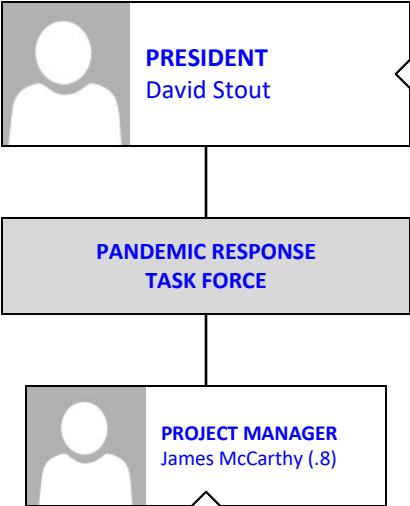
**EXECUTIVE DIRECTOR –  
GOVERNMENTAL AFFAIRS  
& COMMUNITY RELATIONS**  
Edward Johnson

**LEGAL AFFAIRS OFFICER**  
Bonnie Passarella

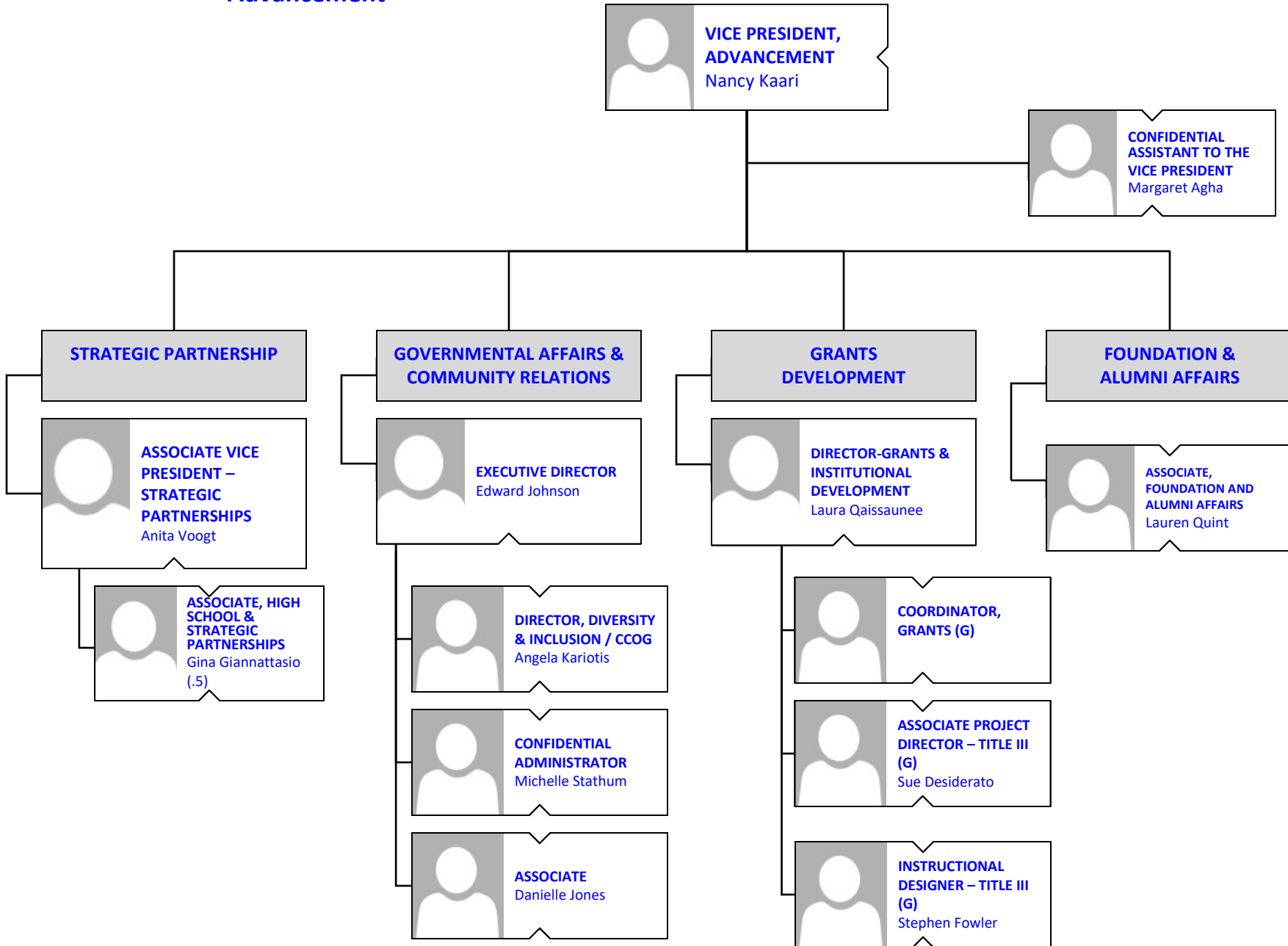
**DIRECTOR, SPECIAL  
PROJECTS**  
Ann Marie Sparaco

**DIRECTOR, WELLNESS  
CENTER**  
Dinneen Jackson

**BROOKDALE COMMUNITY COLLEGE**  
**Pandemic Response Task Force**

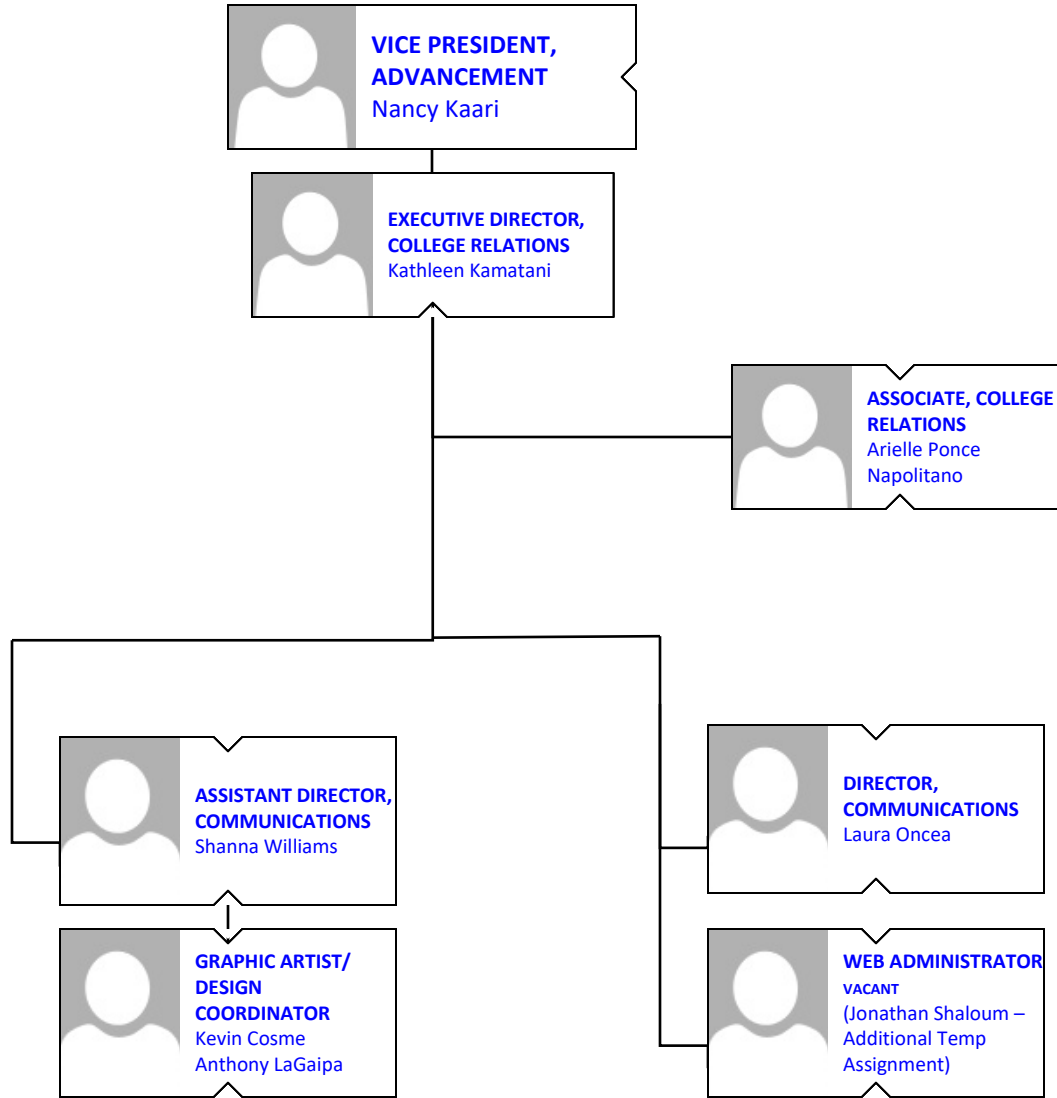


**BROOKDALE COMMUNITY COLLEGE**  
**Advancement**

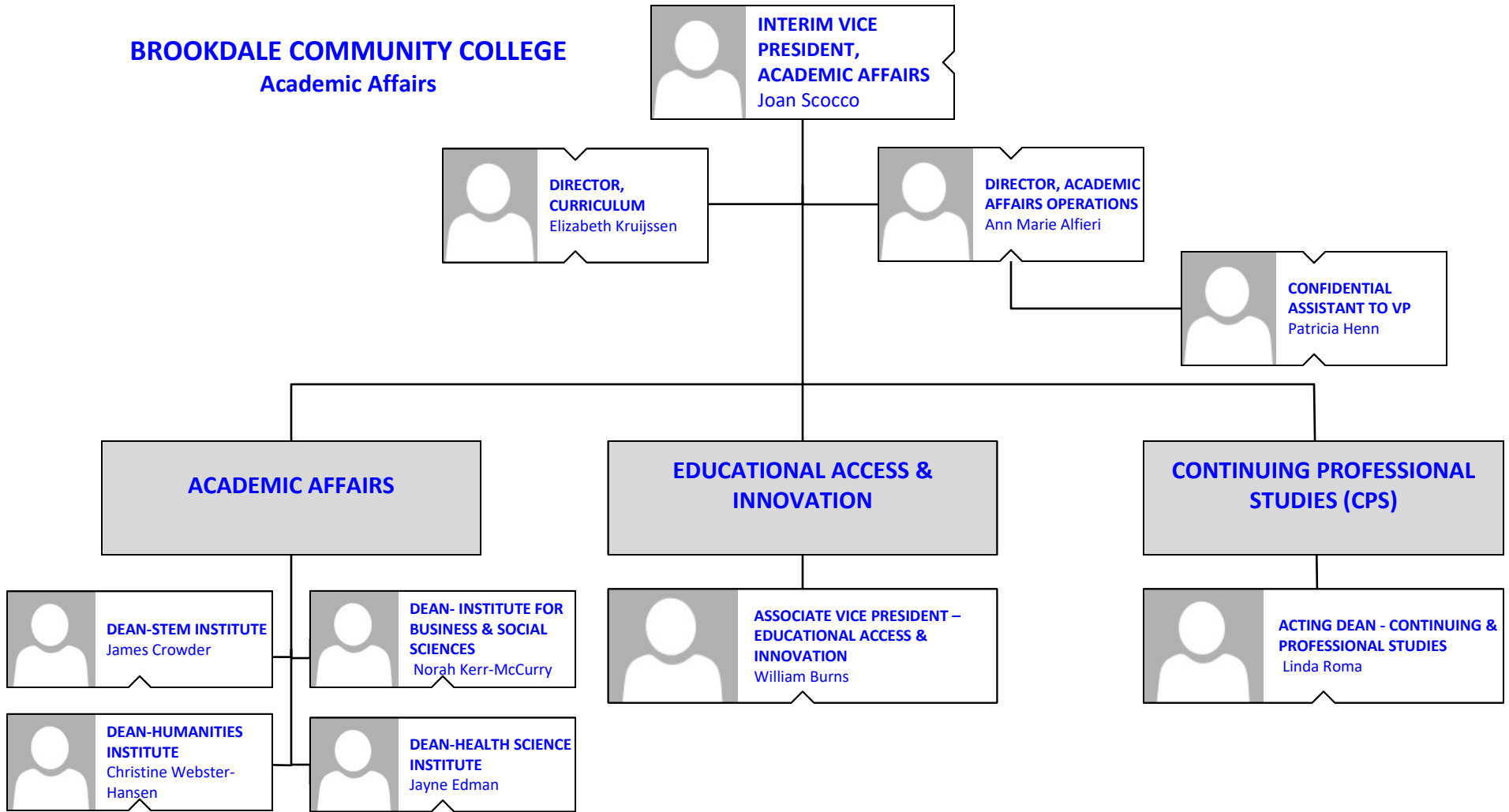


**BROOKDALE COMMUNITY COLLEGE**

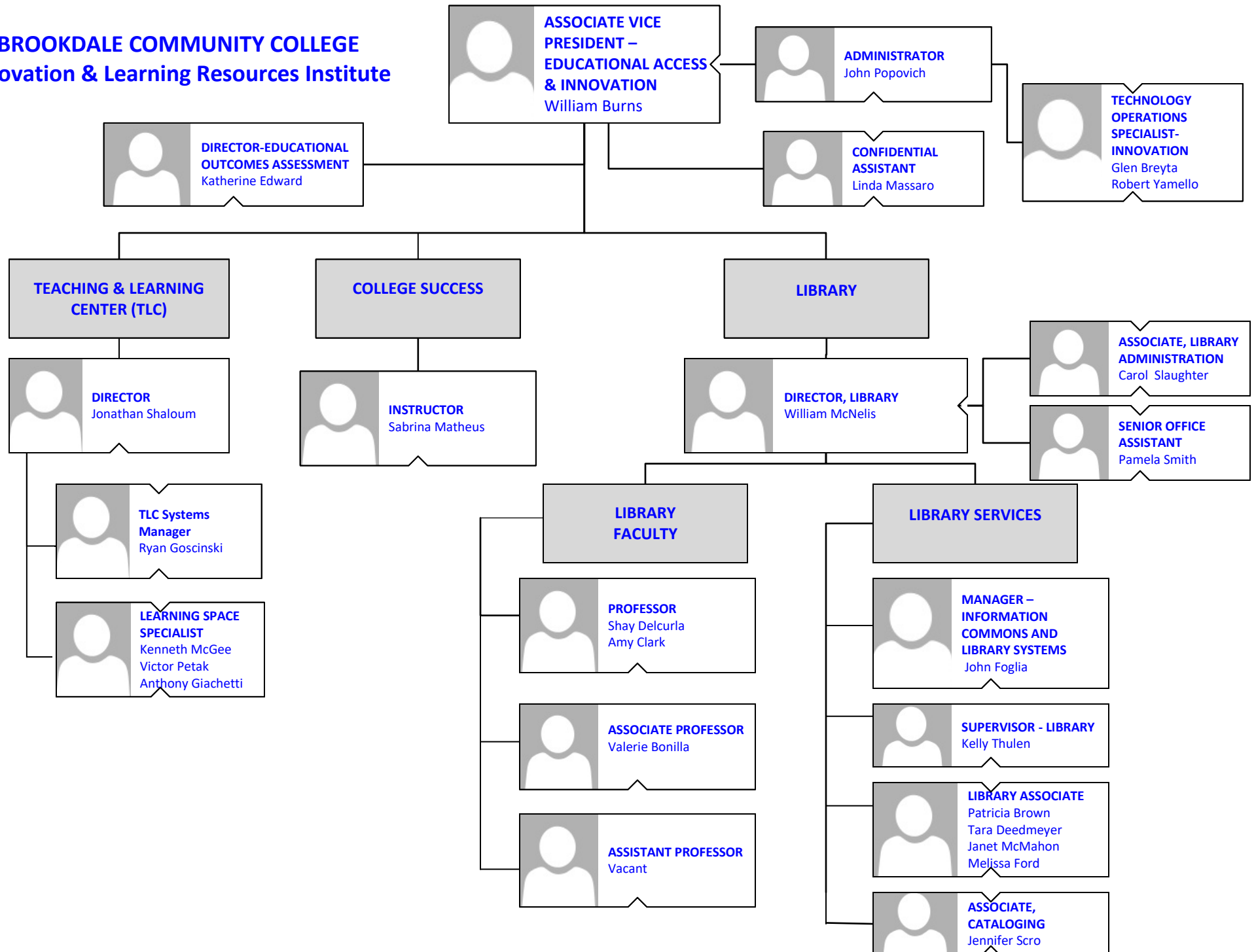
**Advancement  
College Relations**



**BROOKDALE COMMUNITY COLLEGE**  
Academic Affairs

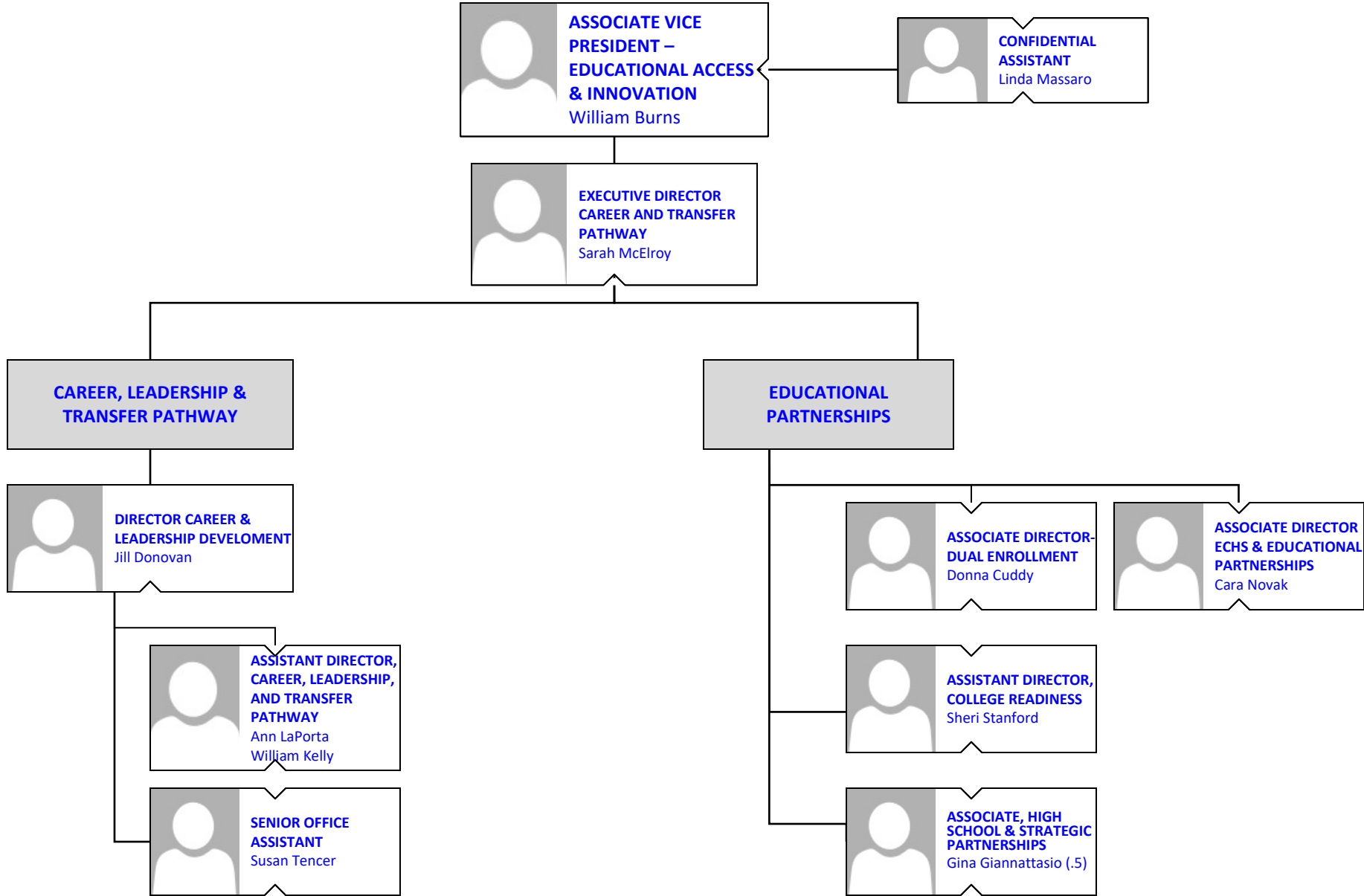


**BROOKDALE COMMUNITY COLLEGE**  
**Innovation & Learning Resources Institute**

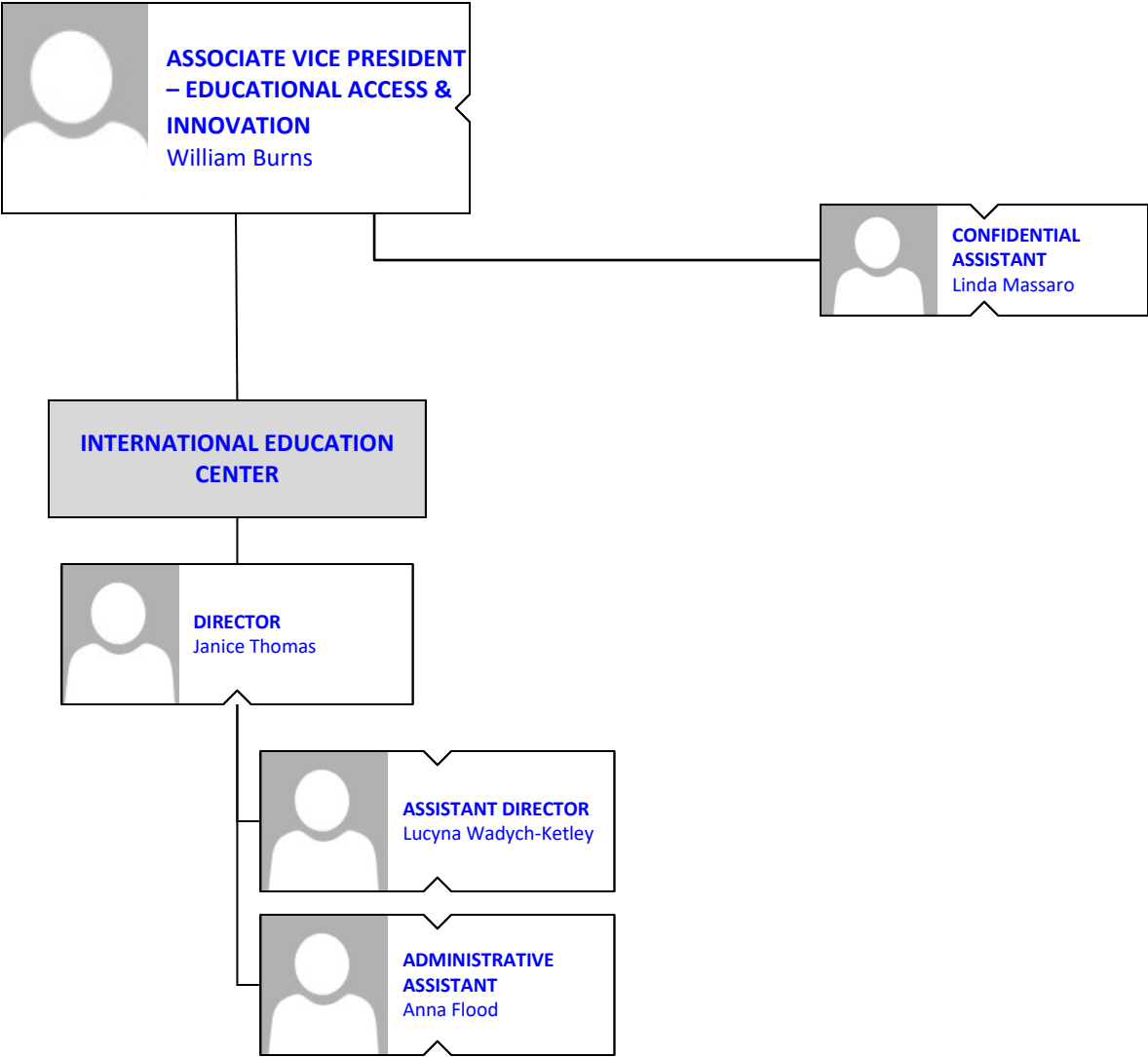




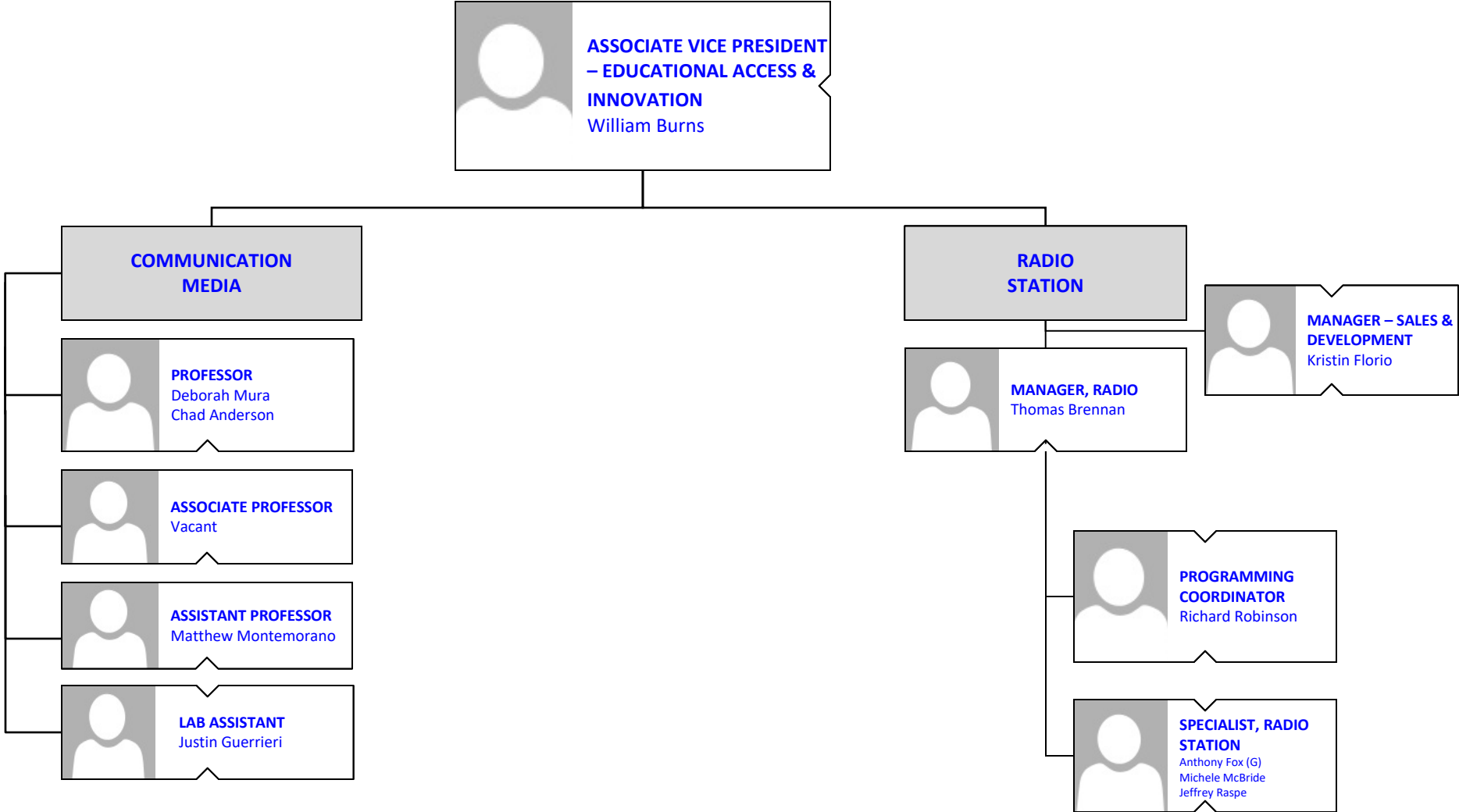
**BROOKDALE COMMUNITY COLLEGE**  
**Career and Transfer Pathway**



**BROOKDALE COMMUNITY COLLEGE**  
International Education Center




**BROOKDALE COMMUNITY COLLEGE**  
**Communication Media**  
**&**  
**Radio Station**



**BROOKDALE COMMUNITY COLLEGE**  
**Academic Affairs: STEM Institute**



**INSTITUTE DEAN - STEM**  
James Crowder



**INSTITUTE ADMINISTRATOR**  
Mary Rose Boutote



**SENIOR OFFICE ASSISTANT**  
April Brinson  
Melissa Doran



- AUTOMOTIVE TECHNOLOGY
- COMPUTER SCIENCE
- ENGINEERING & TECHNOLOGIES

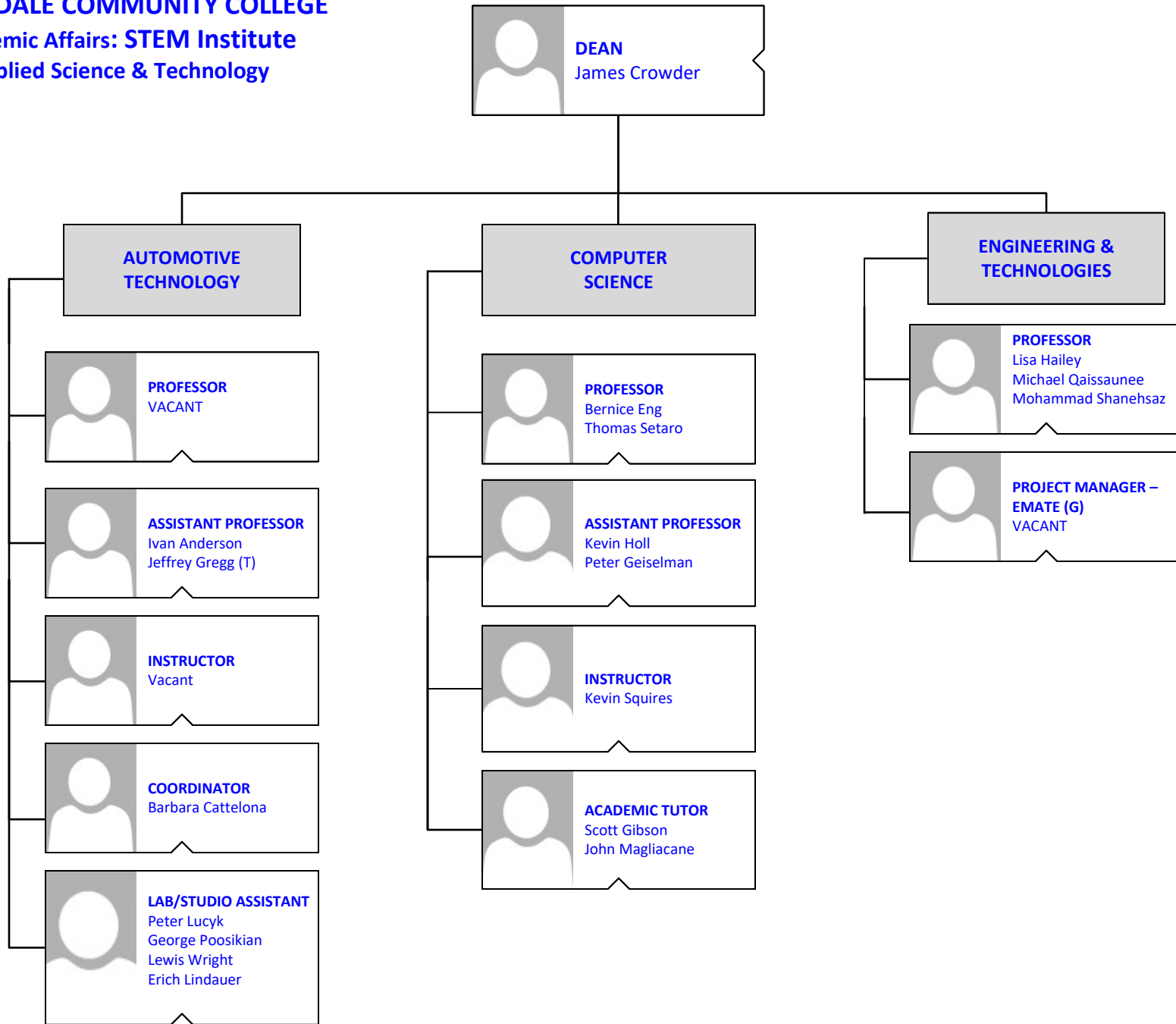
BIOLOGY

MATHEMATICS

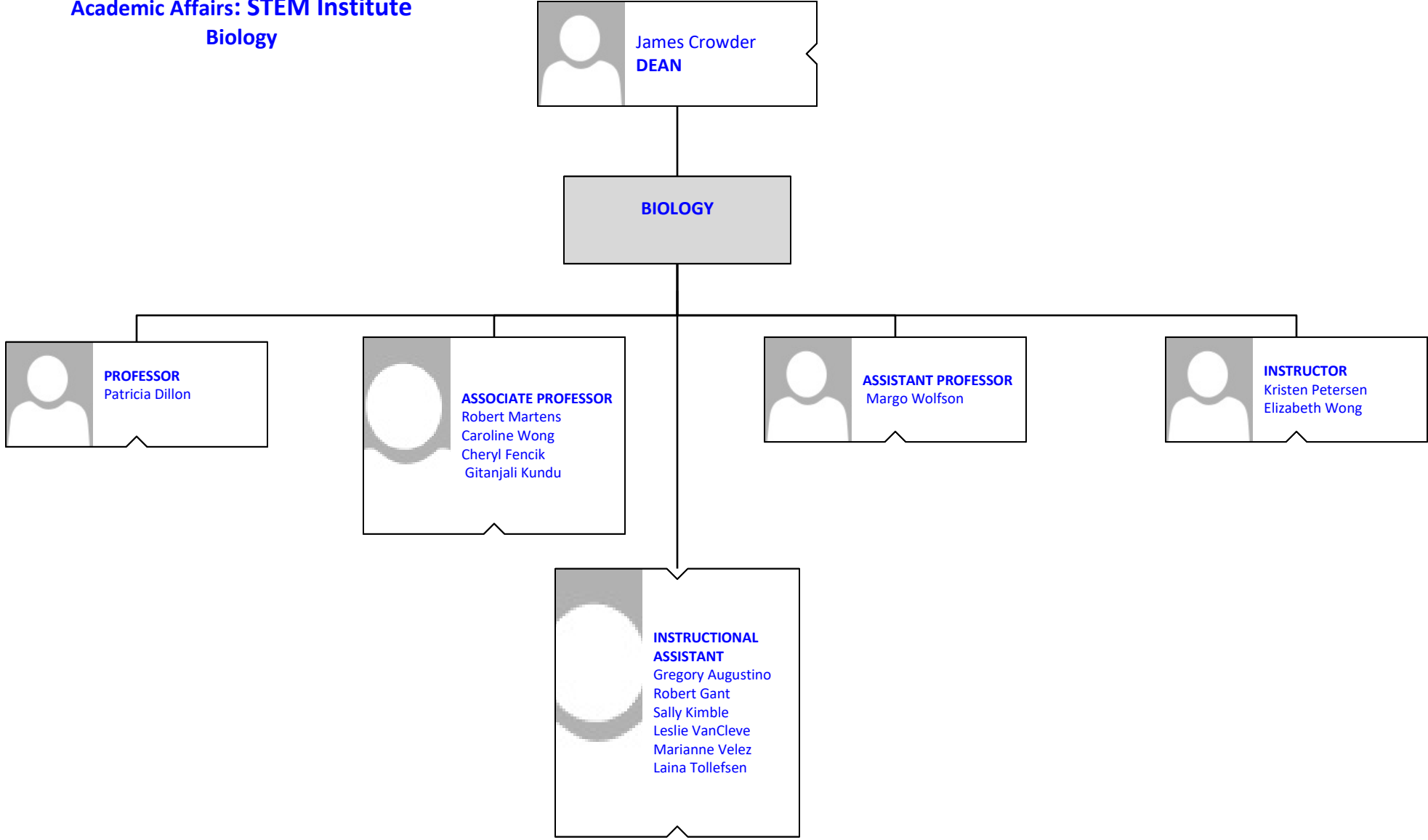
- CHEMISTRY
- ENVIRONMENTAL SCIENCE
- PHYSICS

**BROOKDALE COMMUNITY COLLEGE**


**Academic Affairs: STEM Institute  
Applied Science & Technology**



**BROOKDALE COMMUNITY COLLEGE**  
**Academic Affairs: STEM Institute**  
**Biology**

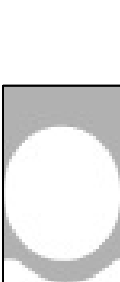


**BROOKDALE COMMUNITY COLLEGE**  
**Academic Affairs: STEM Institute**  
**Mathematics**



**DEAN**  
James Crowder

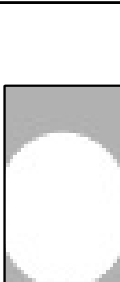
**MATHEMATICS**



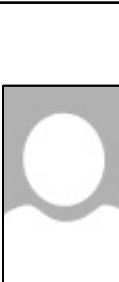
**PROFESSOR**  
Teresa Healy  
Gregory Liano  
Brian McKeon  
Glenn Noe  
Arminda Wey  
Daniel Lopez



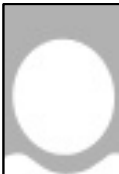
**ASSOCIATE PROFESSOR**  
Susan Monroe  
Andrew Panitz  
Rebecca Rozario  
Nathalie Darden  
Hanli Huang  
Gabriela Sprague  
Michael Elmes  
Ashley Tasy  
Ana Teodorescu



**ASSISTANT PROFESSOR**  
Robert Fiore  
Stephen Hiamang  
Abdul Rahman Kamara  
Sally Mulvey  
James Poinsett  
Spyro Roubos  
Karina Ochs



**INSTRUCTOR**  
Samantha Doluweera  
Michael Nolan  
Arianne Ross  
Prince Sekyi

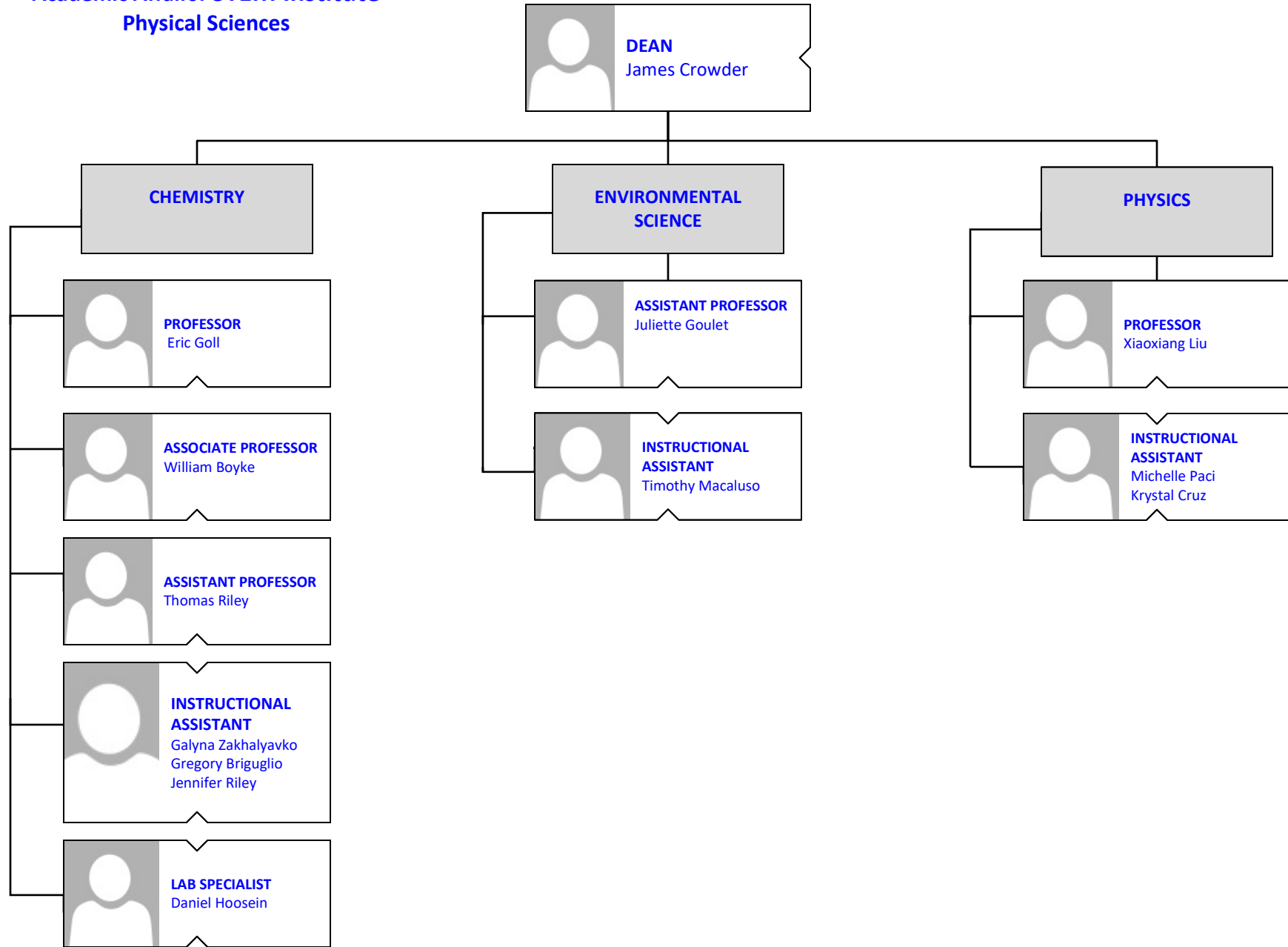


**ACADEMIC TUTOR**  
Deicy Ahmad-Chautre  
Ahmed Said  
Heeja Kwon  
Kamala Das  
Adam Winkler

# BROOKDALE COMMUNITY COLLEGE

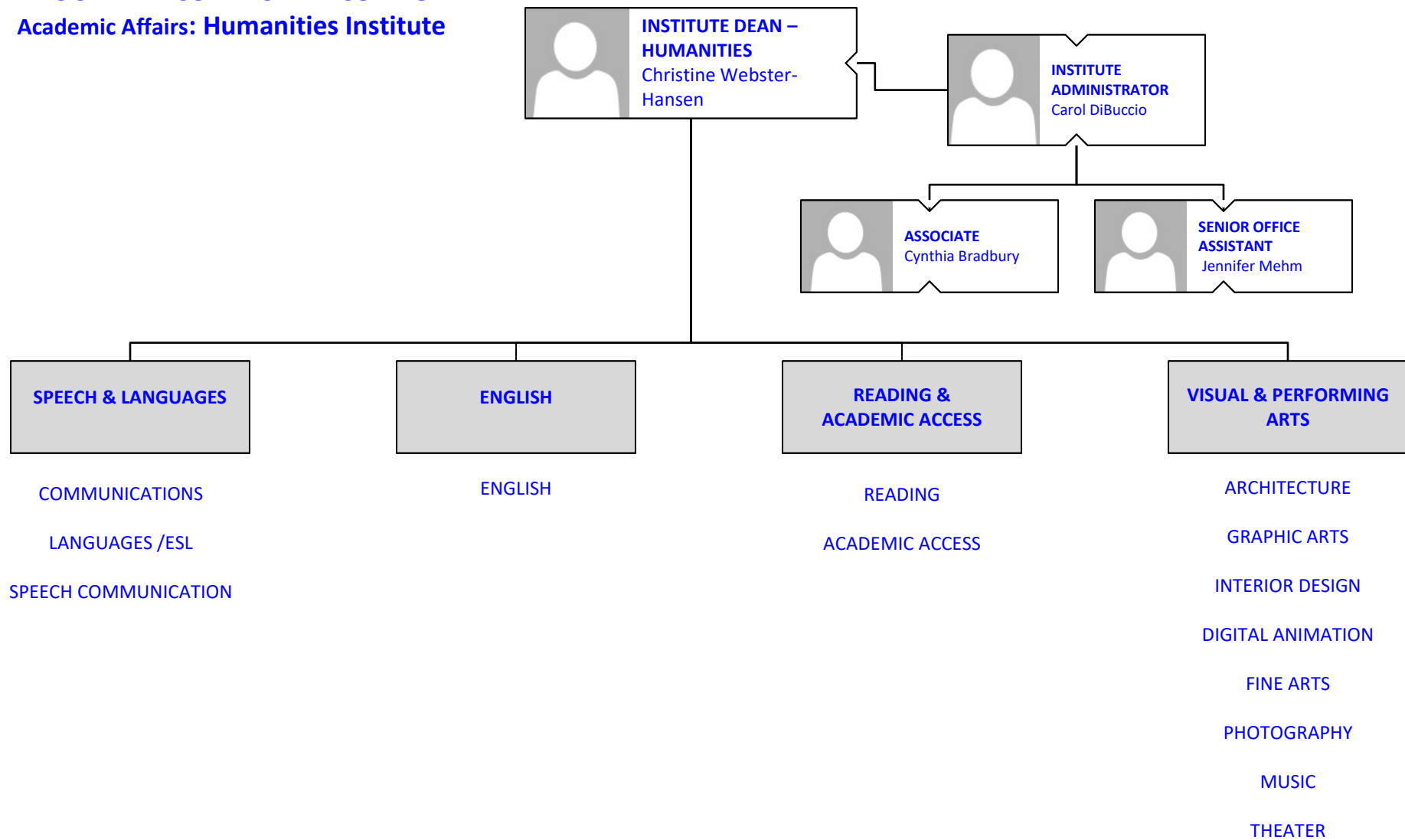
## Academic Affairs: STEM Institute

### Physical Sciences



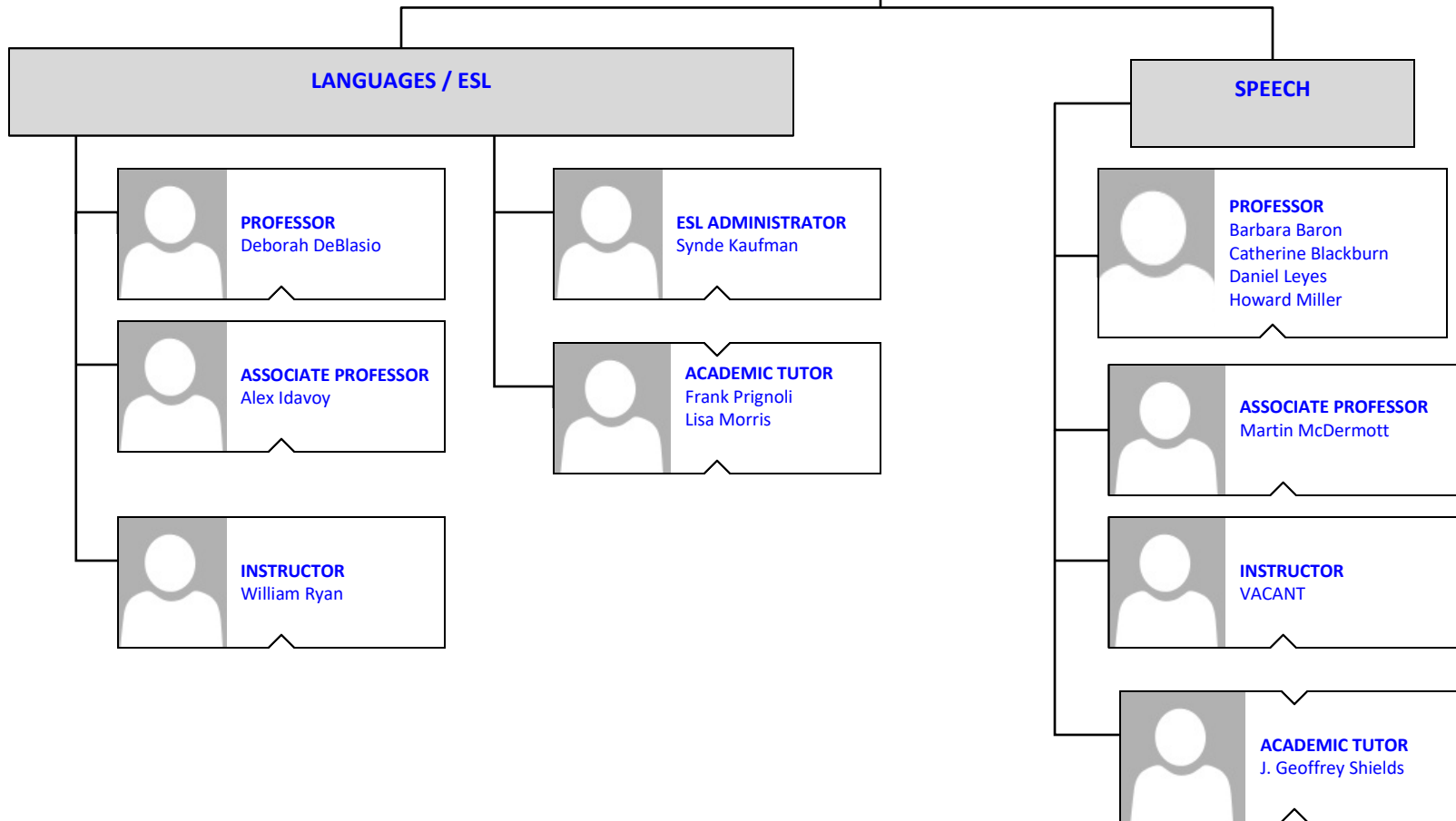


**BROOKDALE COMMUNITY COLLEGE**  
**Academic Affairs: Humanities Institute**



**BROOKDALE COMMUNITY COLLEGE**  
**Academic Affairs: Humanities Institute**  
**Speech & Languages**

 **DEAN**  
Christine Webster-Hansen




**BROOKDALE COMMUNITY COLLEGE**  
**Academic Affairs: Humanities Institute**  
**English**




**DEAN**  
Christine Webster-  
Hansen


**ENGLISH**




**PROFESSOR**  
Roseanne Alvarez  
Bettejane Bolan-Kenney  
Marc Bonagura  
James Cody  
Donna Flinn  
Marcia Krefetz-Levine  
Laura McCullough  
Nancy Noe  
Kurt Scheffler  
Brandon Gramer  
Kathleen Kennedy  
Angela Saragusa  
Suzanne Parker  
Dara Evans




**ASSOCIATE PROFESSOR**  
Michael Broek  
Geri Girard  
Donna Pope  
Christine Vasquez  
Jennifer Kaminski  
Kelsey Maki  
Charles Mencil



**ASSISTANT PROFESSOR**  
Richard Dery  
Dina Long  
John Ryan  
Michele Locandro  
Cameron Mount

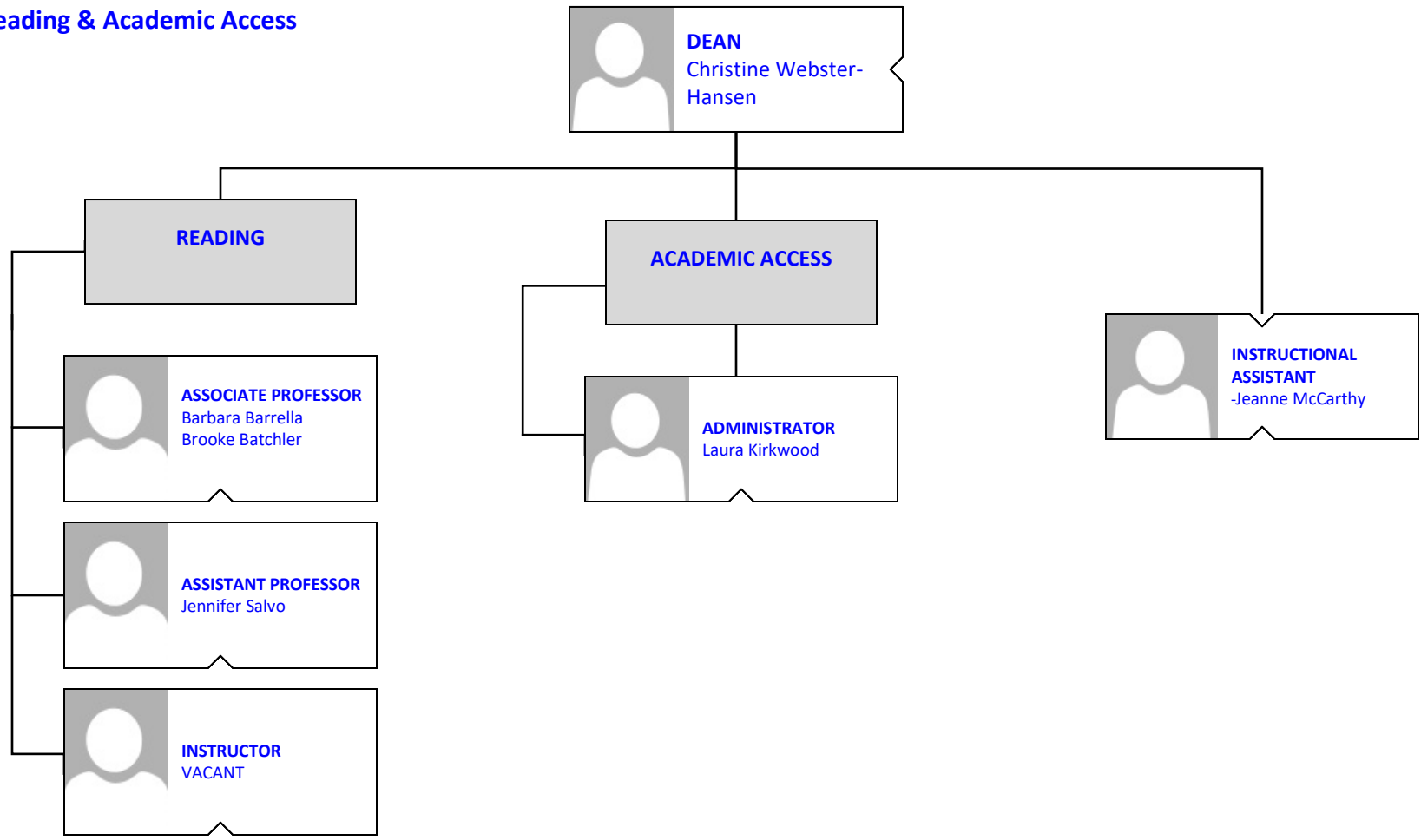


**INSTRUCTOR**  
Heather Revesz  
Nicolette Nicola  
Elana Maloney  
Shayla Ward  
Mary Grilli



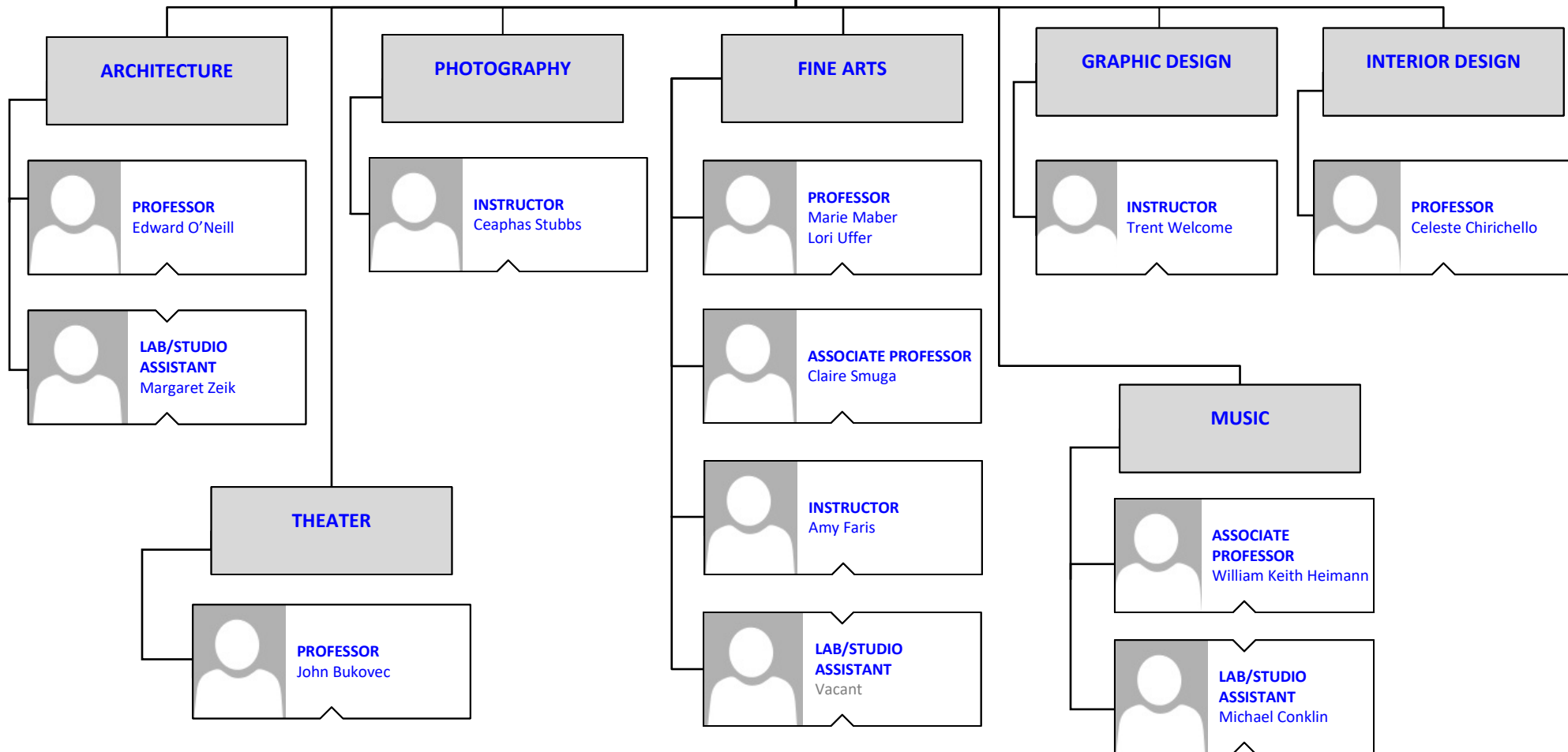
**ACADEMIC TUTOR**  
Dolores Palazzo  
Kathleen Vasile  
Bridget Van Hemert  
Leah Wasacz  
Tanaporn Jampathom

**BROOKDALE COMMUNITY COLLEGE**  
**Academic Affairs: Humanities Institute**  
**Reading & Academic Access**



**BROOKDALE COMMUNITY COLLEGE**  
**Academic Affairs: Humanities Institute**  
**Visual & Performing Arts**

**DEAN**  
Christine Webster-Hansen



**BROOKDALE COMMUNITY COLLEGE**  
**Academic Affairs: Institute for Business**  
**&**  
**Social Science**



**INSTITUTE DEAN –  
 BUSINESS & SOCIAL  
 SCIENCES**  
 Norah Kerr-McCurry

**HONORS  
 PROGRAM**

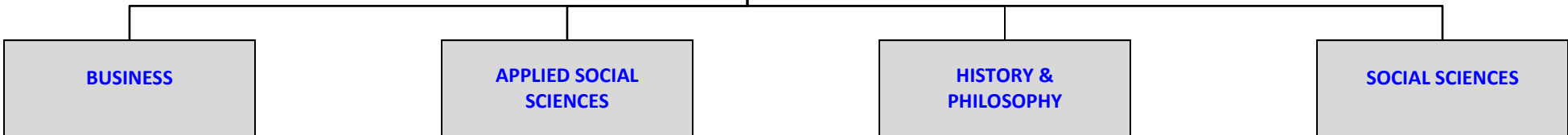
**CENTER FOR  
 WORLD WAR II STUDIES &  
 CONFLICT RESOLUTION**



**INSTITUTE  
 ADMINISTRATOR**  
 Kara McCoy



**SENIOR OFFICE  
 ASSISTANT**  
 Linda Morris  
 Andrea Donahue



- BUSINESS**
- ACCOUNTING
  - BUSINESS
  - CULINARY ARTS
  - ECONOMICS
  - HOSPITALITY MANAGEMENT
  - MARKETING/FASHION  
MECHANDISING

- APPLIED SOCIAL  
 SCIENCES**
- CRIMINAL JUSTICE
  - EDUCATION
  - PARALEGAL STUDIES

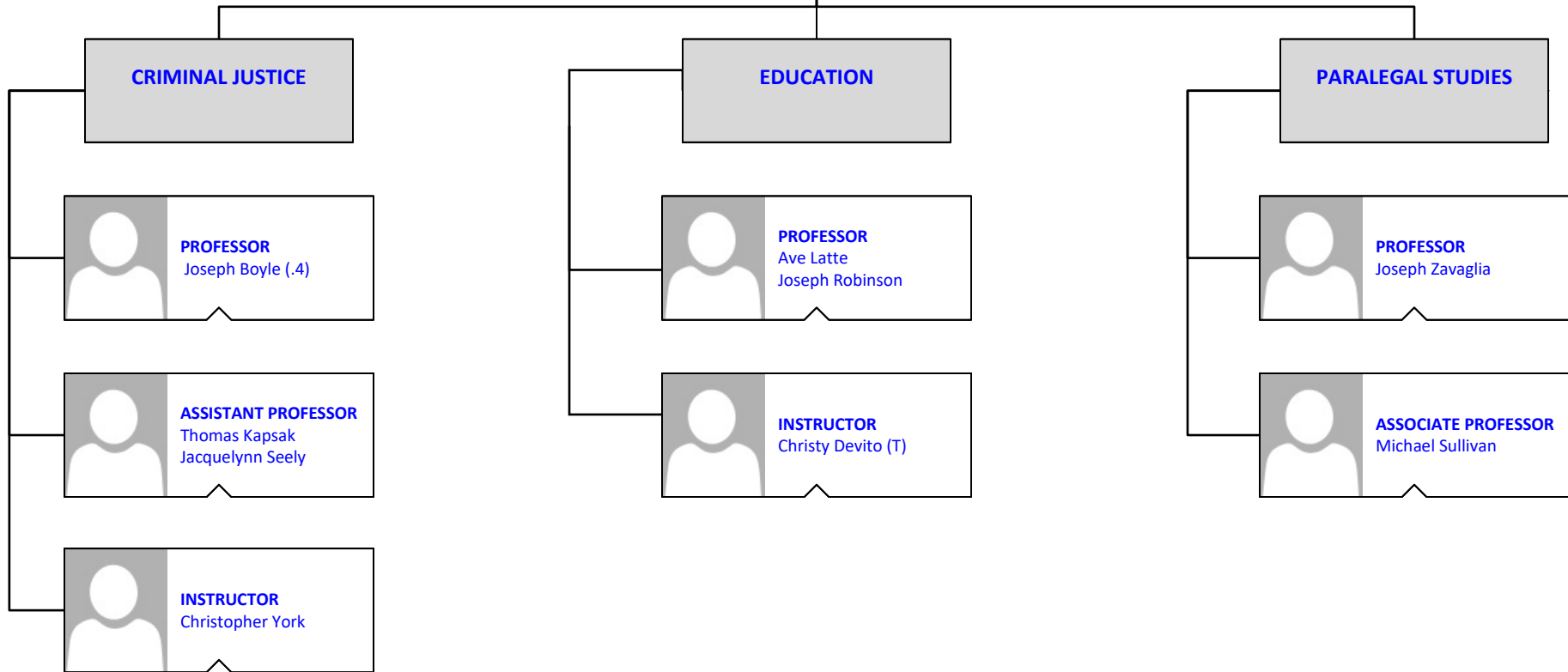
- HISTORY &  
 PHILOSOPHY**
- HISTORY
  - PHILOSOPHY

- SOCIAL SCIENCES**
- ANTHROPOLOGY /  
 SOCIOLOGY / HUMAN  
 GEOGRAPHY
  - POLITICAL SCIENCE
  - PSYCHOLOGY

**BROOKDALE COMMUNITY COLLEGE**  
**Academic Affairs: Institute for Business &  
Social Science  
Applied Social Sciences**

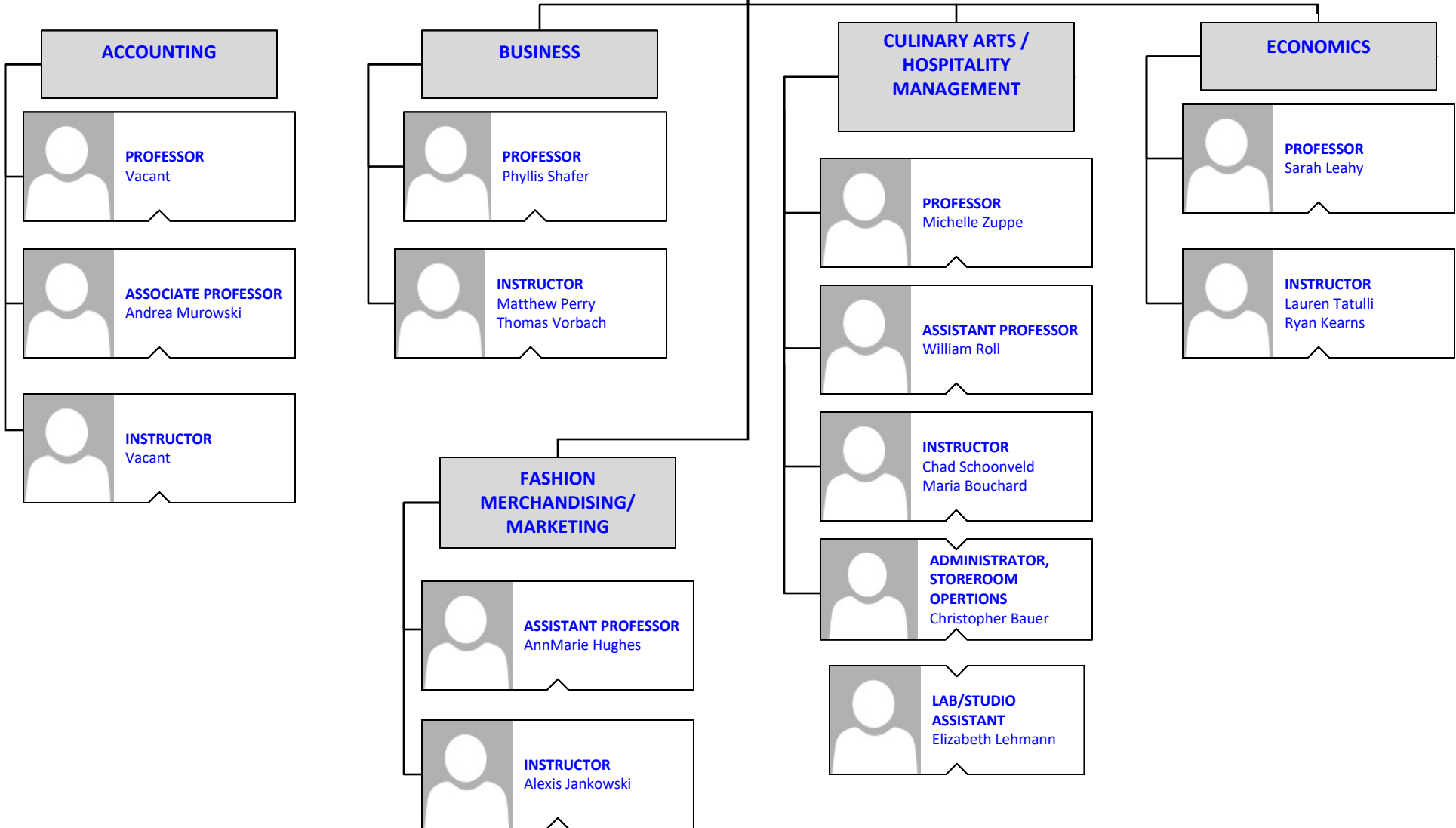


**DEAN**  
Norah Kerr-McCurry




**BROOKDALE COMMUNITY COLLEGE**  
**Academic Affairs: Institute Business &**  
**Social Science**  
**Business**

**DEAN**  
 Norah Kerr-McCurry

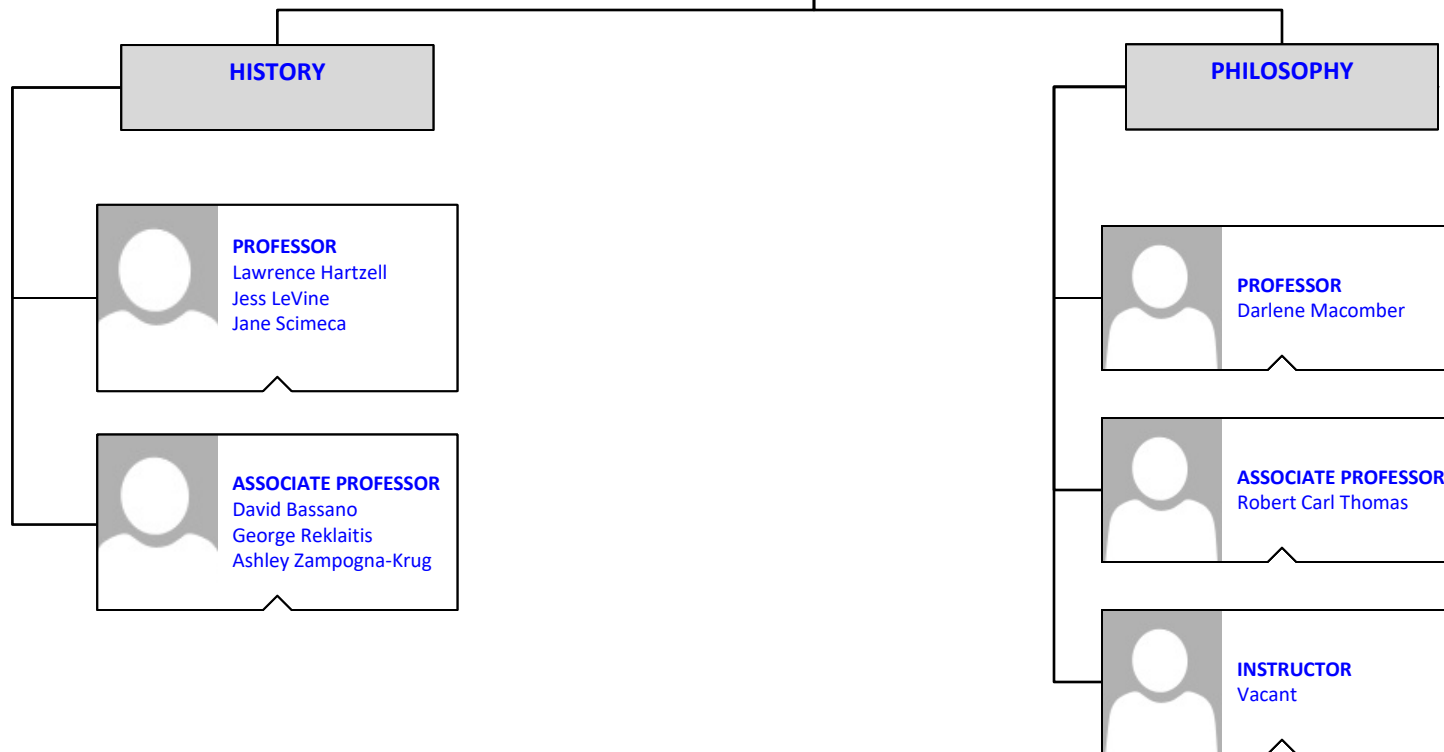




**BROOKDALE COMMUNITY COLLEGE**  
**Academic Affairs: Institute for Business &**  
**Social Science**  
**History & Philosophy**



**DEAN**  
Norah Kerr-McCurry



**BROOKDALE COMMUNITY COLLEGE**  
**Academic Affairs: Institute for Business &  
Social Science**  
**Social Sciences**



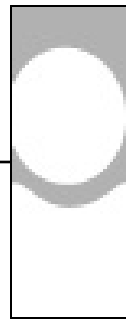
**DEAN**  
Norah Kerr-McCurry

**POLITICAL  
SCIENCE**



**PROFESSOR**  
Thomas Cioppa  
Jonathan Moschberger

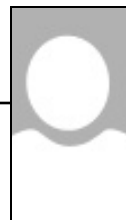
**PSYCHOLOGY**



**PROFESSOR**  
Mary Beth Boylan  
Eugene DeRobertis  
Franklyn Rother  
David Wiseman  
Brian Oland  
Diana Glynn  
Brent Costleigh  
Nambrath Wesley




**ASSOCIATE PROFESSOR**  
Nicole Jackson-Walker  
Marlena Frank  
Christine Greco-  
Covington  
Sara Burrill



**ASSISTANT PROFESSOR**  
Daijuan Gao  
Michael Cohen

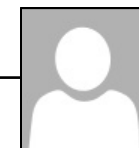
**ANTHROPOLOGY / SOCIOLOGY /  
HUMAN GEOGRAPHY**



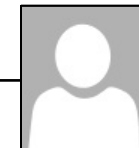
**PROFESSOR**  
Joseph Boyle (.6)  
Caroline Calogero  
Howard Finkelstein  
Barbara Jones



**ASSOCIATE PROFESSOR**  
Diditi Mitra

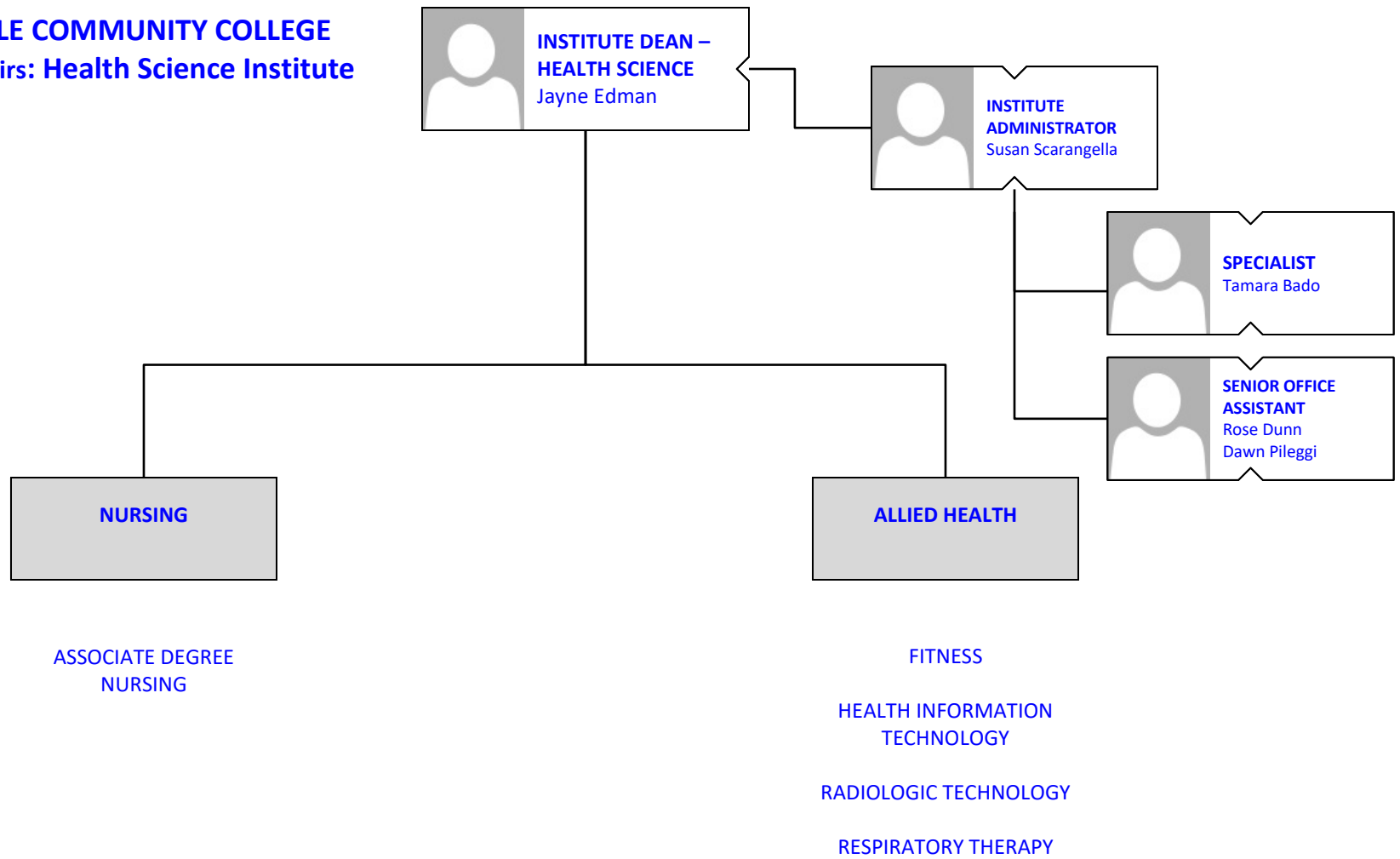


**ASSISTANT PROFESSOR**  
Rosemarie Bello-Truland

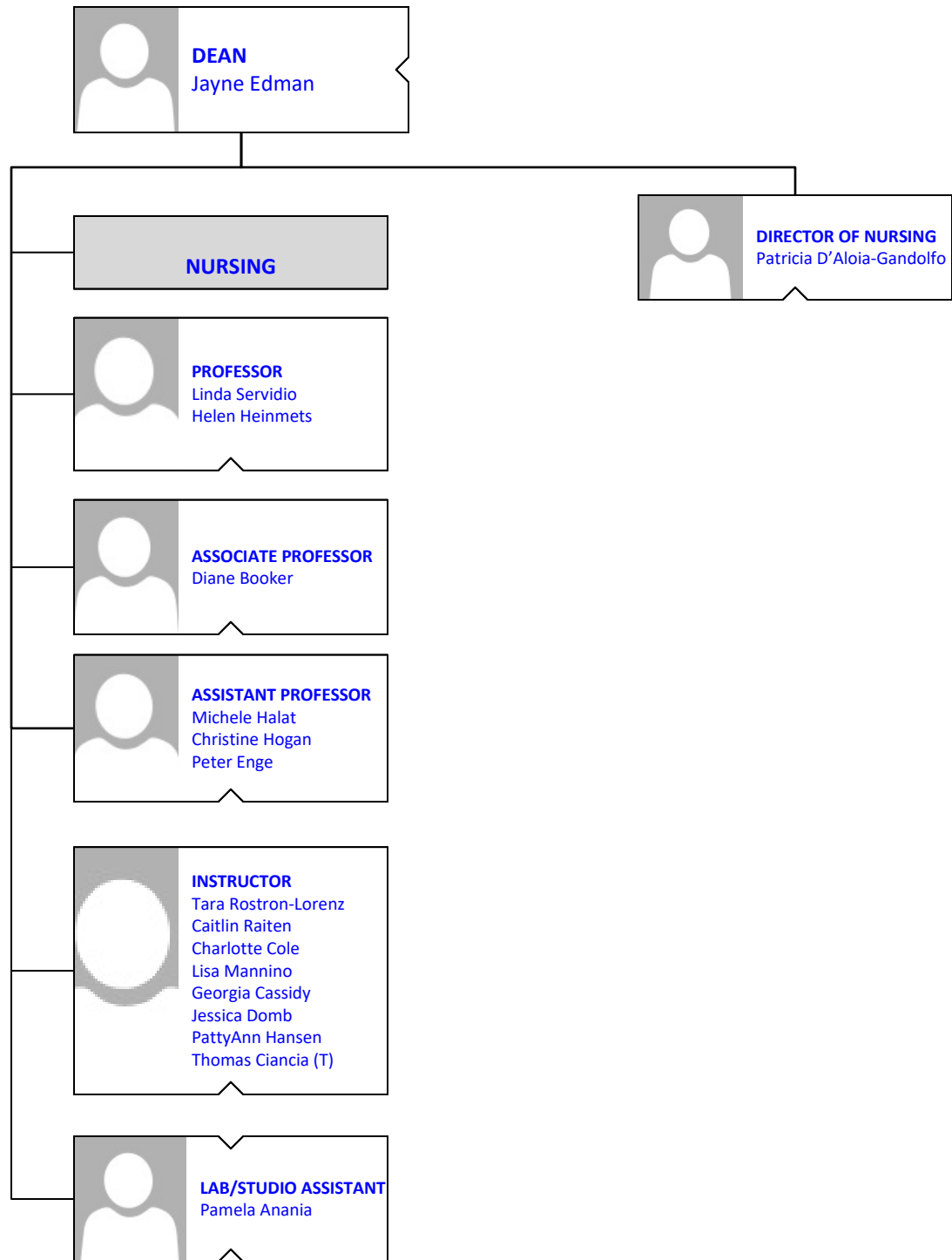


**INSTRUCTOR**  
Matthew Kalos

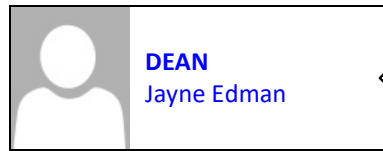
**BROOKDALE COMMUNITY COLLEGE**  
**Academic Affairs: Health Science Institute**



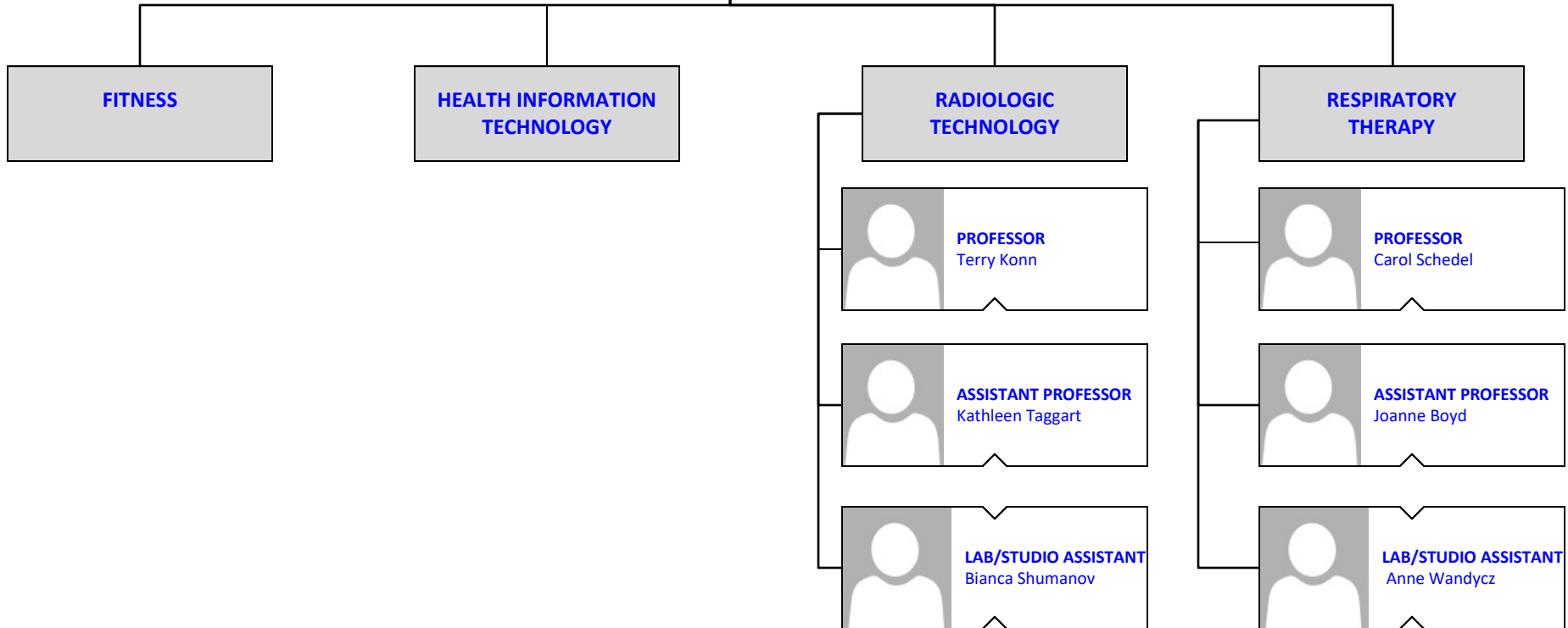
**BROOKDALE COMMUNITY COLLEGE**  
**Academic Affairs: Health Science Institute**  
**Nursing**



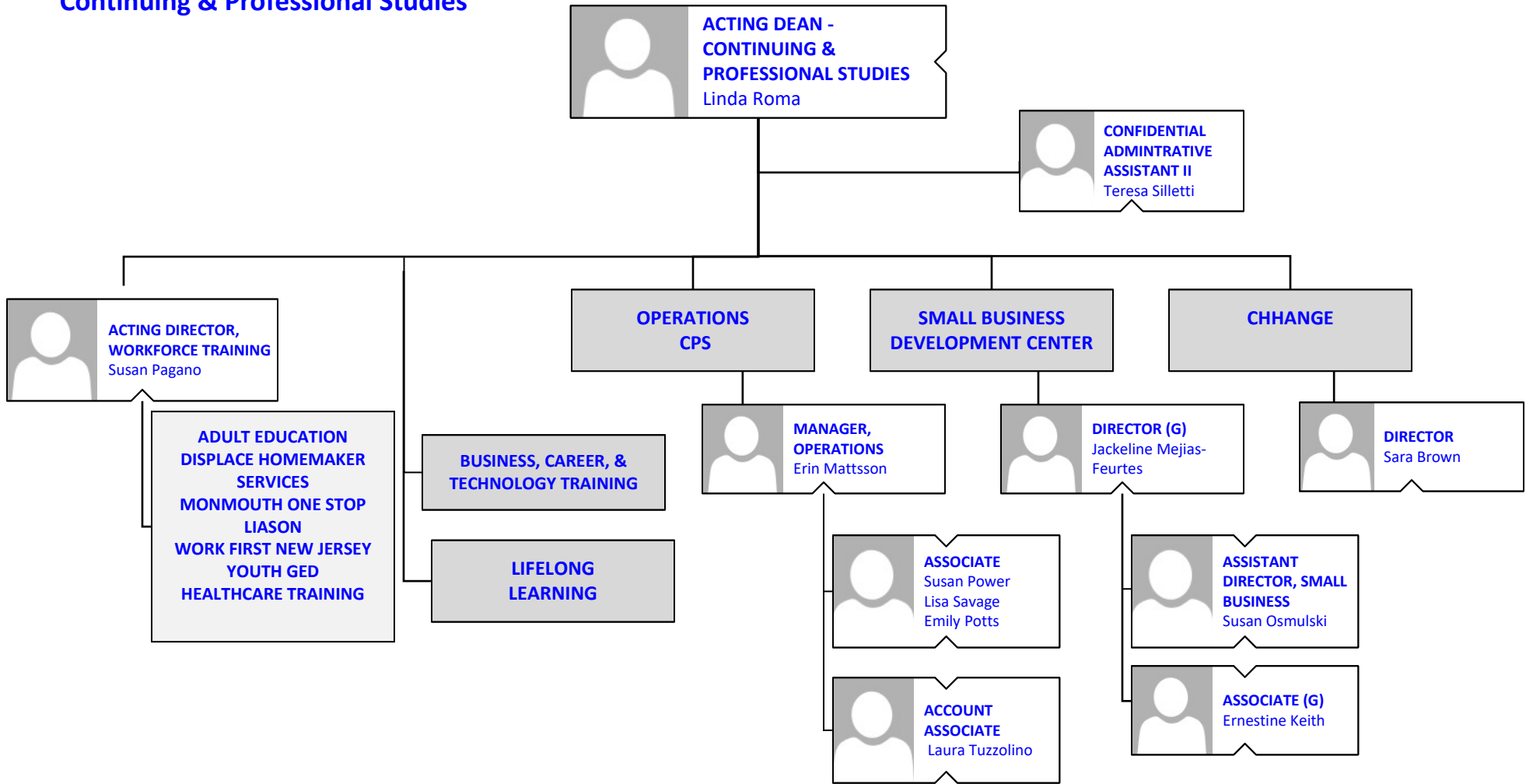
**BROOKDALE COMMUNITY COLLEGE**  
**Academic Affairs: Health Science Institute**  
**Allied Health & Fitness**



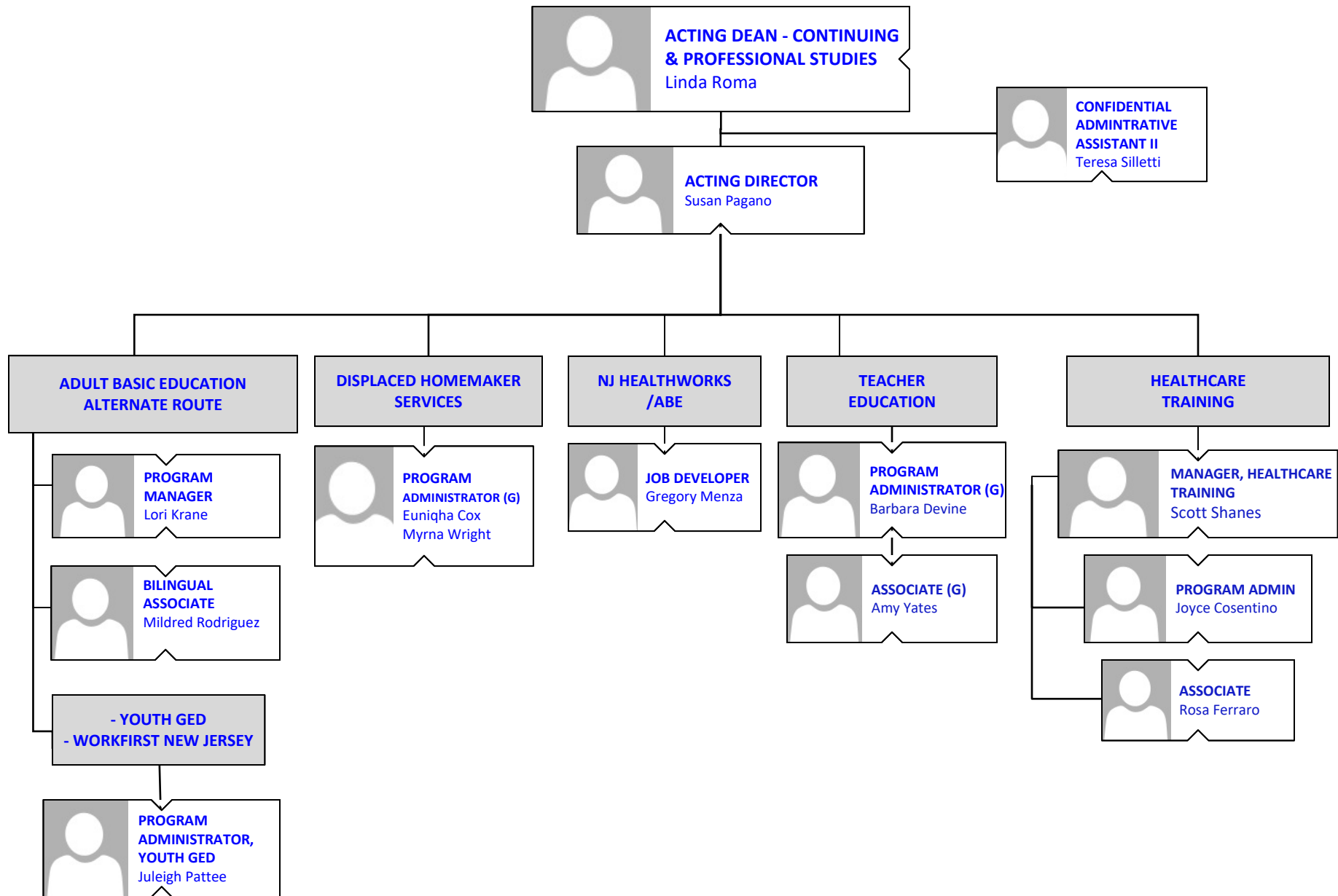
**DEAN**  
Jayne Edman



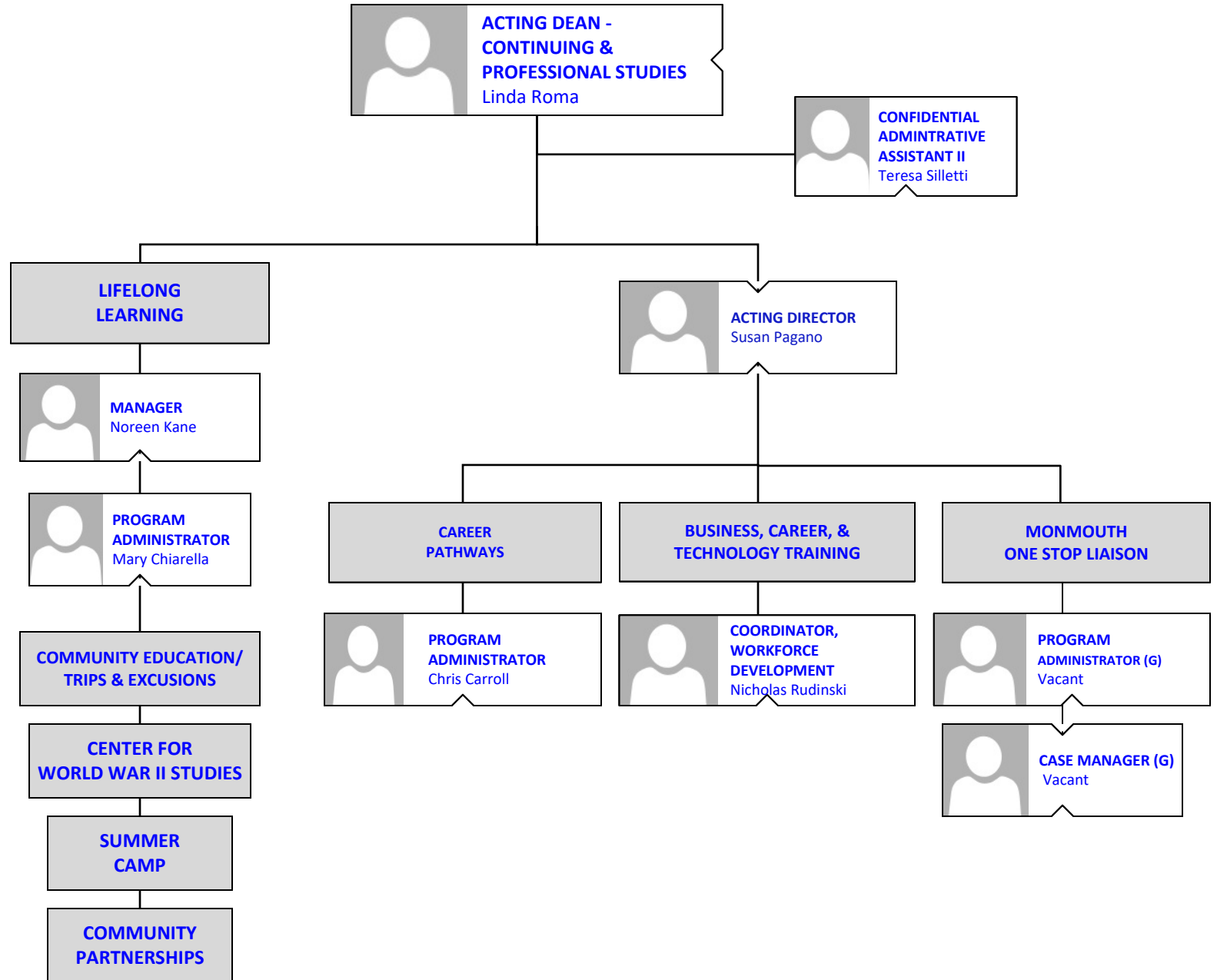
**BROOKDALE COMMUNITY COLLEGE**  
**Continuing & Professional Studies**



**BROOKDALE COMMUNITY COLLEGE**  
**Continuing & Professional Studies**  
**WORKFORCE TRAINING**

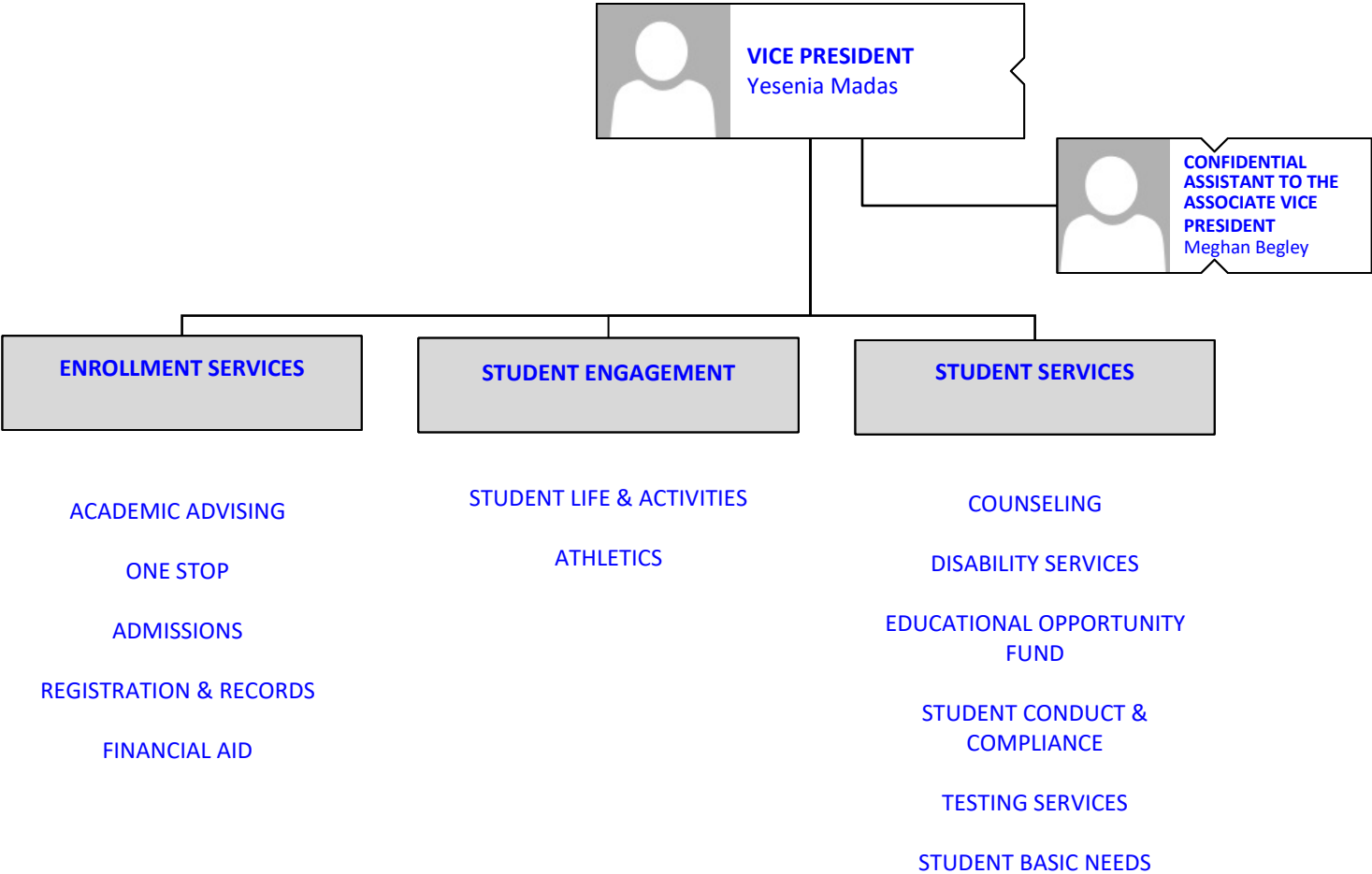


**BROOKDALE COMMUNITY COLLEGE**  
**Continuing & Professional Studies**

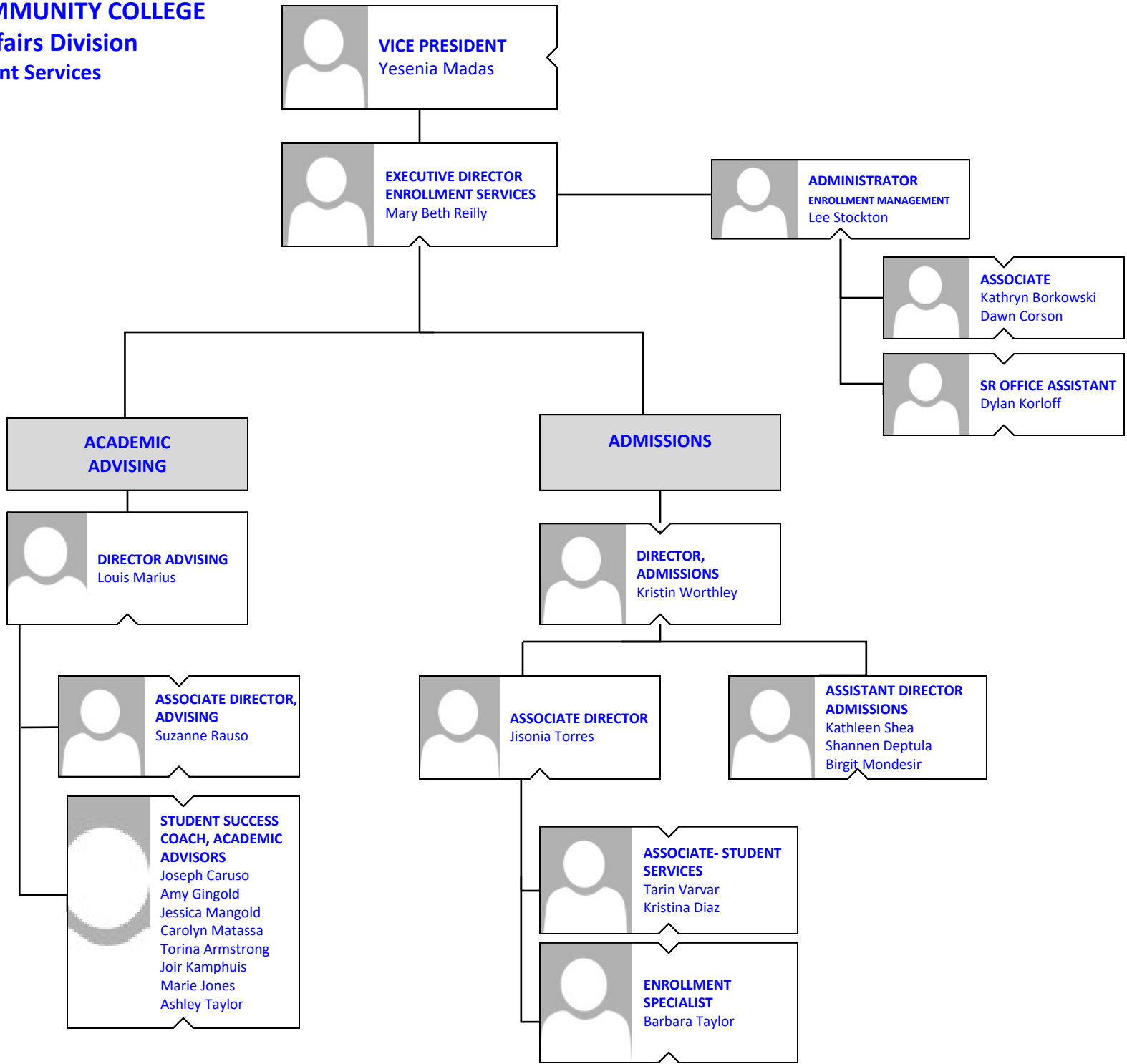




**BROOKDALE COMMUNITY COLLEGE**  
**Student Affairs Division**




**BROOKDALE COMMUNITY COLLEGE**  
**Student Affairs Division**  
**Enrollment Services**



**BROOKDALE COMMUNITY COLLEGE**  
**Student Affairs Division**  
**Enrollment Services**



**VICE PRESIDENT**  
Yesenia Madas



**EXECUTIVE DIRECTOR  
ENROLLMENT SERVICES**  
Mary Beth Reilly

**REGISTRATION &  
RECORDS**

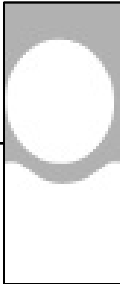


**REGISTRAR**  
Eleanor Glazewski

**REGISTRATION**




**ASSOCIATE REGISTRAR**  
Joan Rudinski



**ENROLLMENT  
SPECIALIST**  
Sandra Grande  
Beverlee Gross  
Julie Murphy  
Pamela Rogers  
Beth Stryker

**RECORDS**



**ASSOCIATE DIRECTOR  
INFORMATION  
SYSTEMS**  
Nicole Hammel



**MANAGER—STUDENT  
RECORDS SYSTEMS**  
Vacant

**SCHEDULING &  
CAMPUS EVENTS**




**ADMINISTRATOR-  
SCHEDULING &  
OPERATIONS**  
BJ Kosulavage



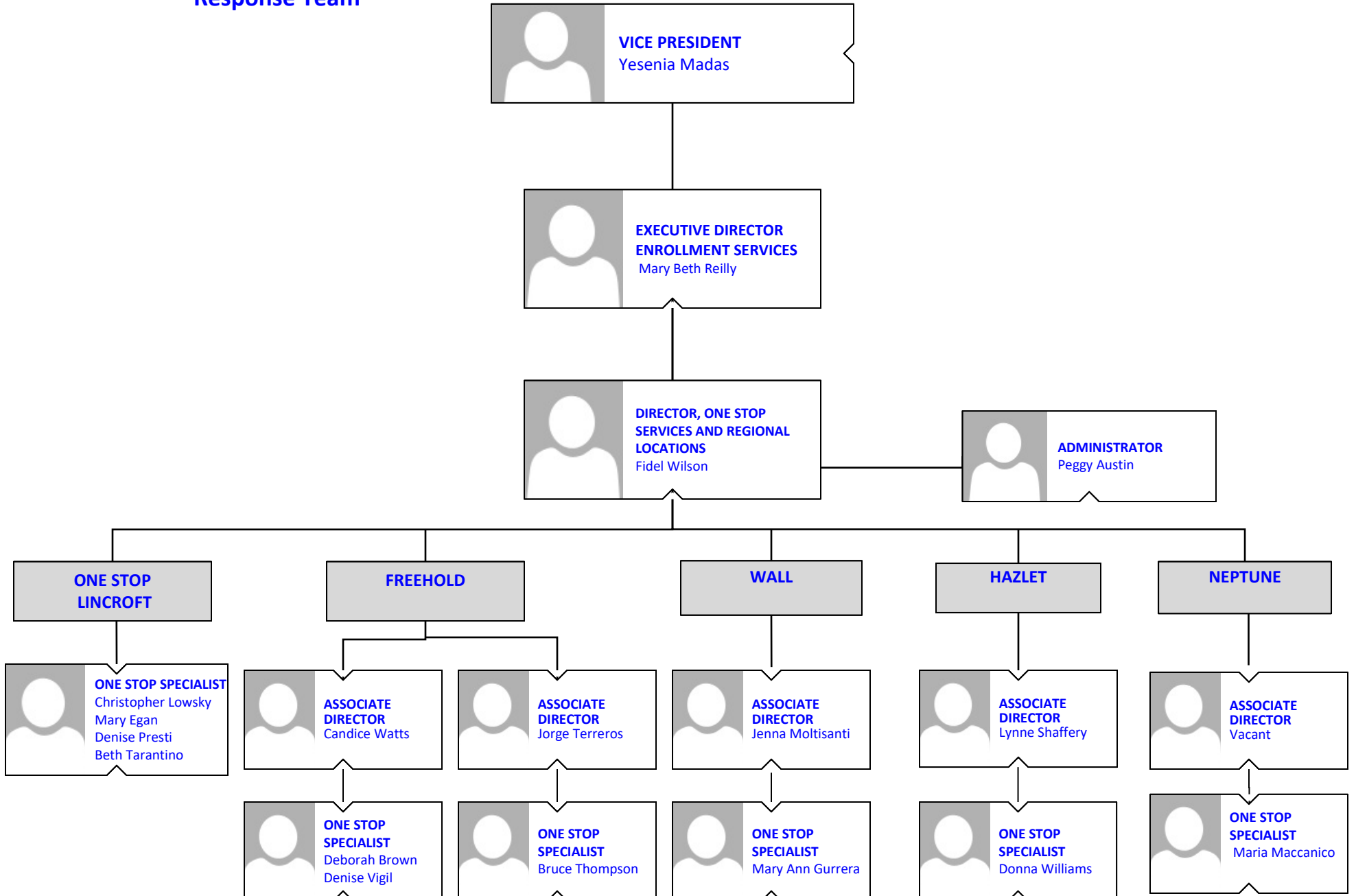
**SPECIALIST**  
Rose Dunn

**VETERAN'S CENTER  
& MENTAL HEALTH SERVICES**

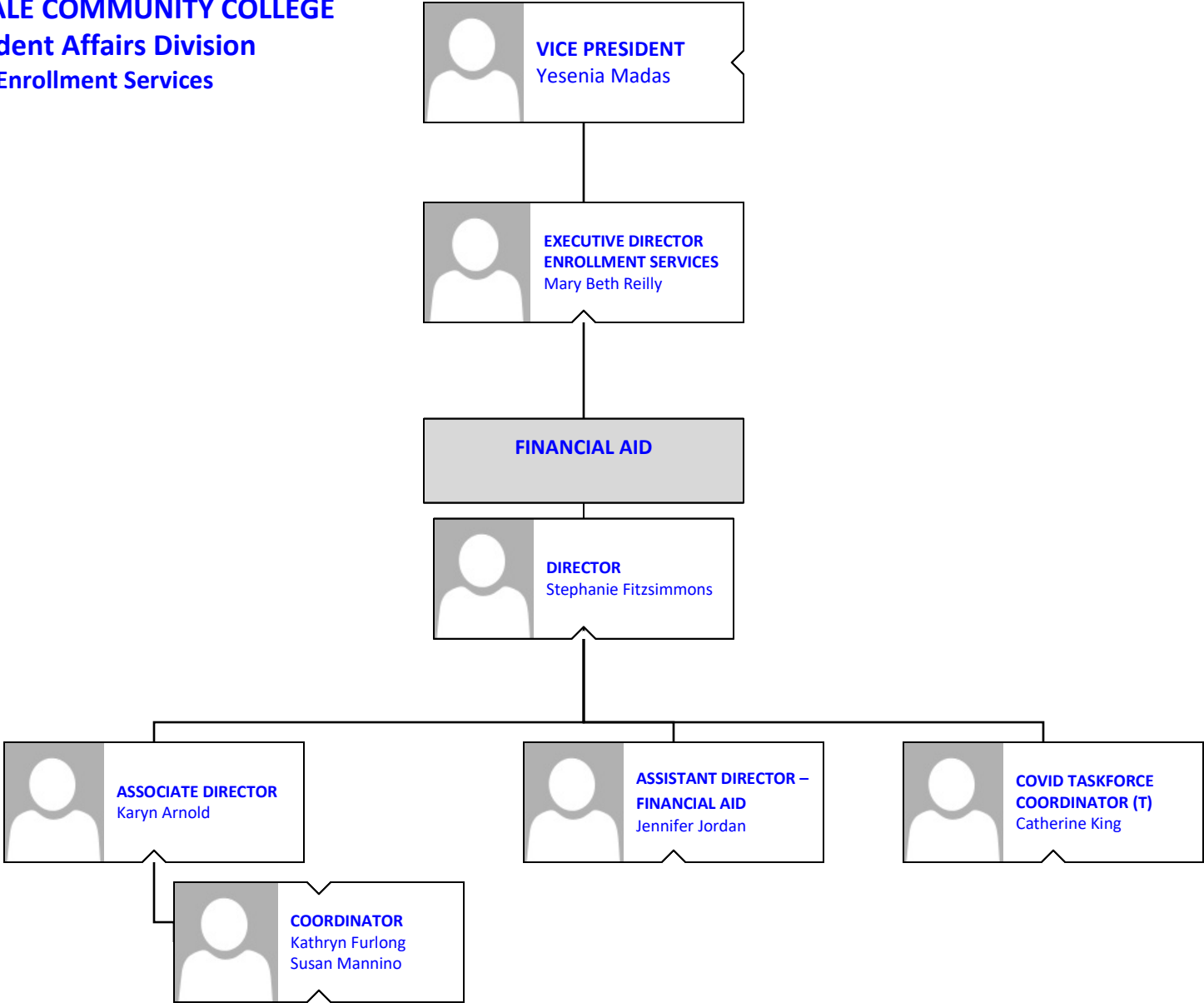


**ASSOCIATE, VETERAN'S  
CENTER & MENTAL  
HEALTH SERVICES**  
Eunice Clark

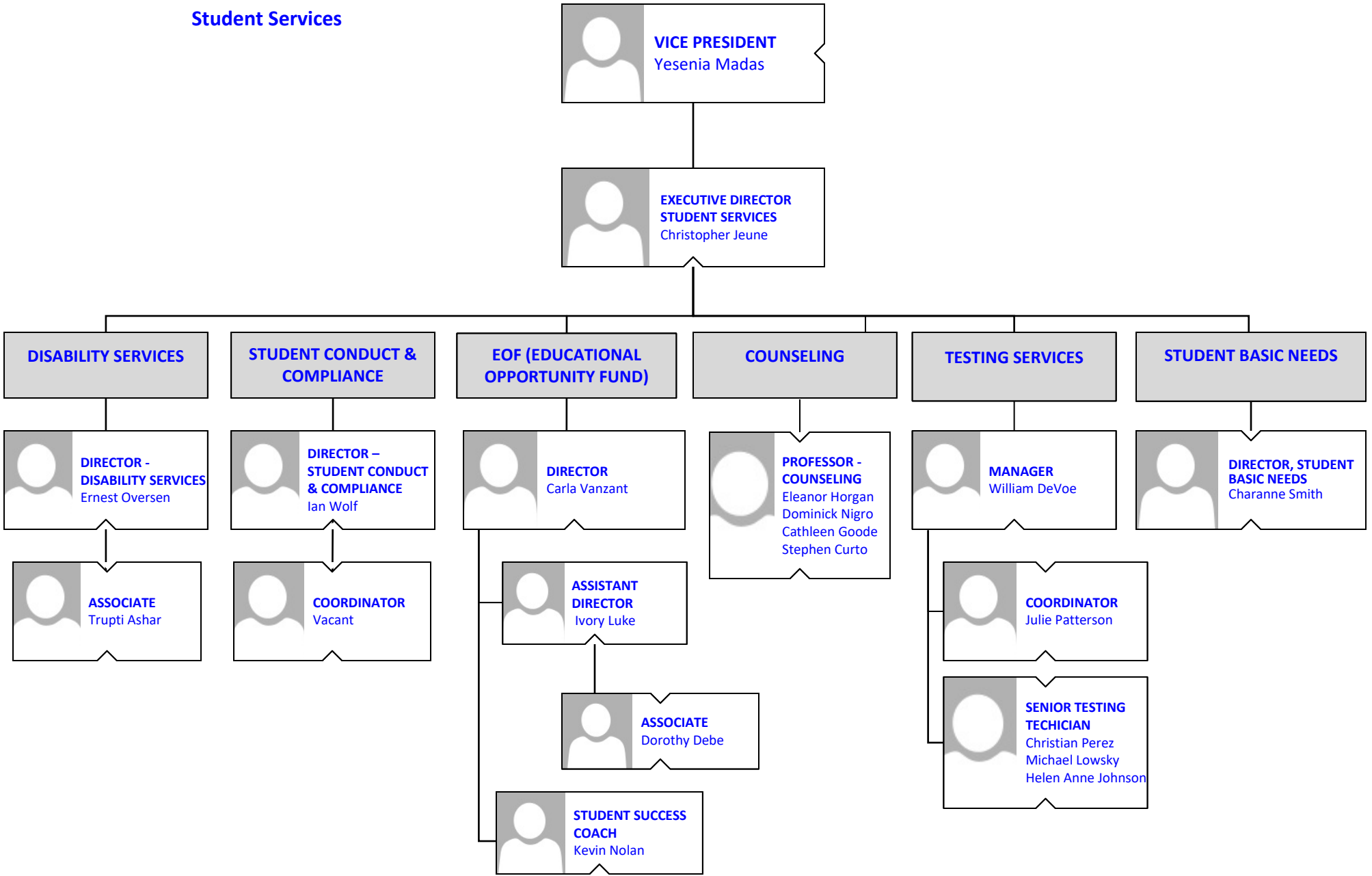
**BROOKDALE COMMUNITY COLLEGE**  
**Student Affairs Division**  
**One Stop & Regional Locations / COVID**  
**Response Team**



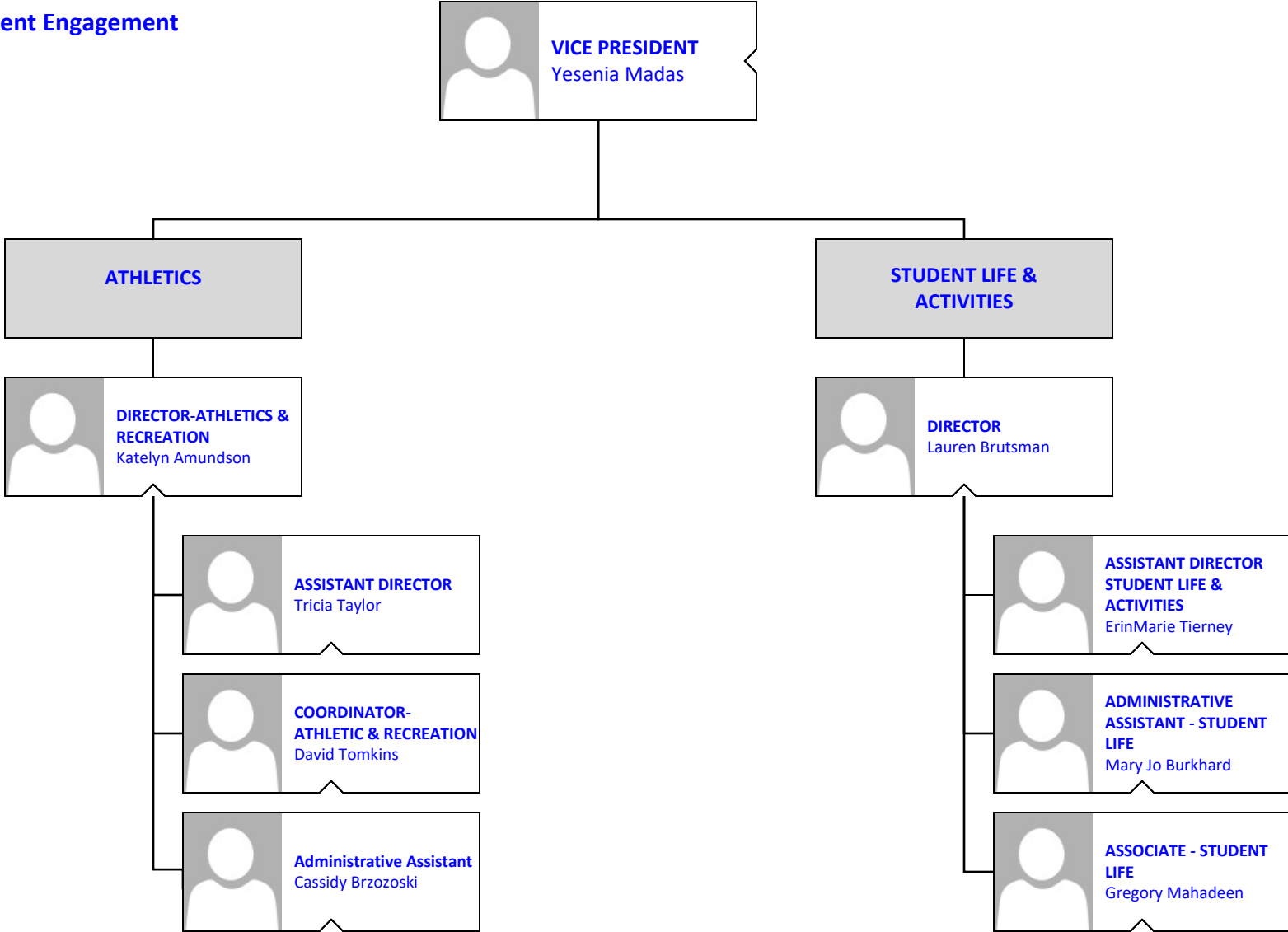
**BROOKDALE COMMUNITY COLLEGE**  
**Student Affairs Division**  
**Enrollment Services**



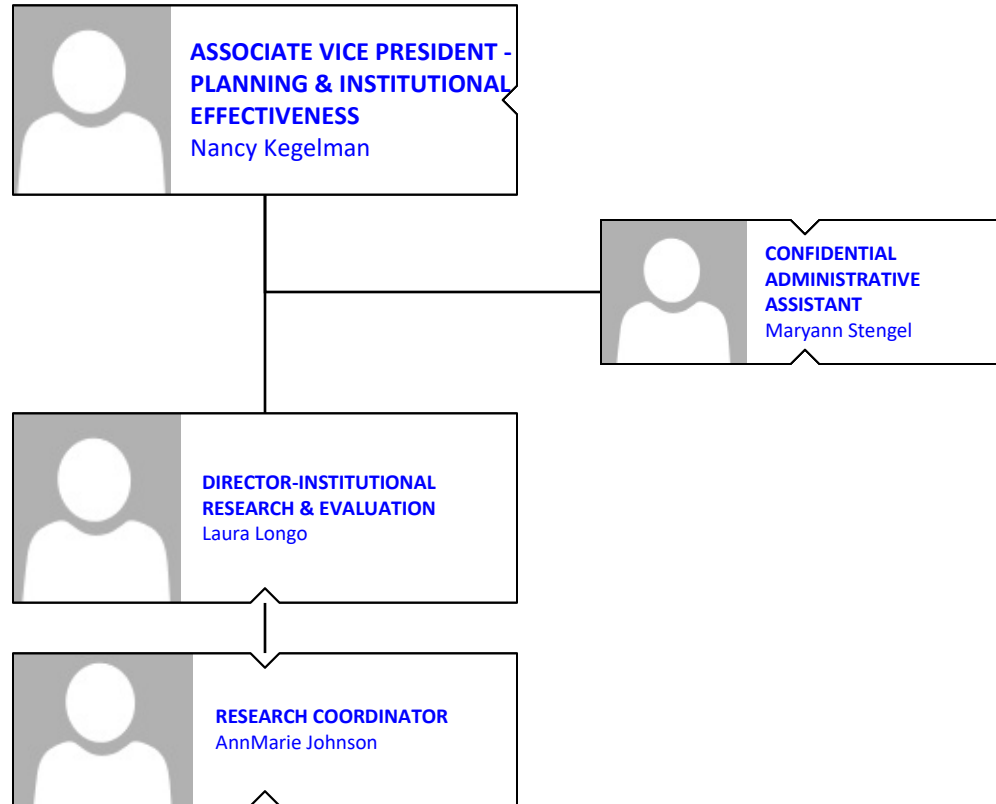
**BROOKDALE COMMUNITY COLLEGE**  
**Student Affairs Division**  
**Student Services**



**BROOKDALE COMMUNITY COLLEGE**  
**Student Affairs Division**  
**Student Engagement**




**BROOKDALE COMMUNITY COLLEGE**  
**Planning & Institutional Effectiveness**





**BROOKDALE COMMUNITY COLLEGE**  
**Human Resources and Organizational Safety**



**ASSOCIATE VICE  
PRESIDENT-HUMAN  
RESOURCES &  
ORGANIZATIONAL SAFETY**  
Patricia Sensi



**CONFIDENTIAL  
ADMINISTRATIVE  
ASSISTANT**  
Kathleen Stamboni

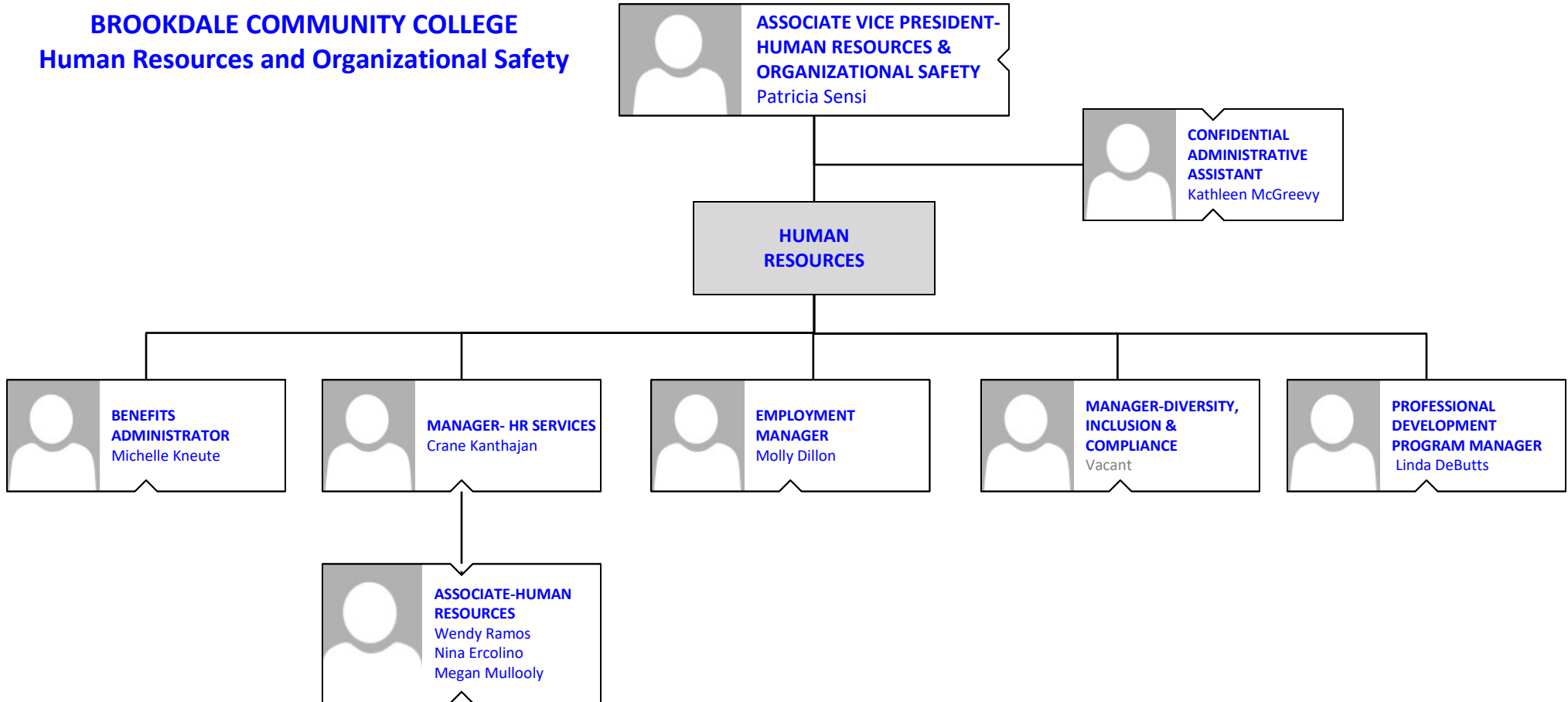
**HUMAN  
RESOURCES**

**POLICE  
DEPARTMENT**

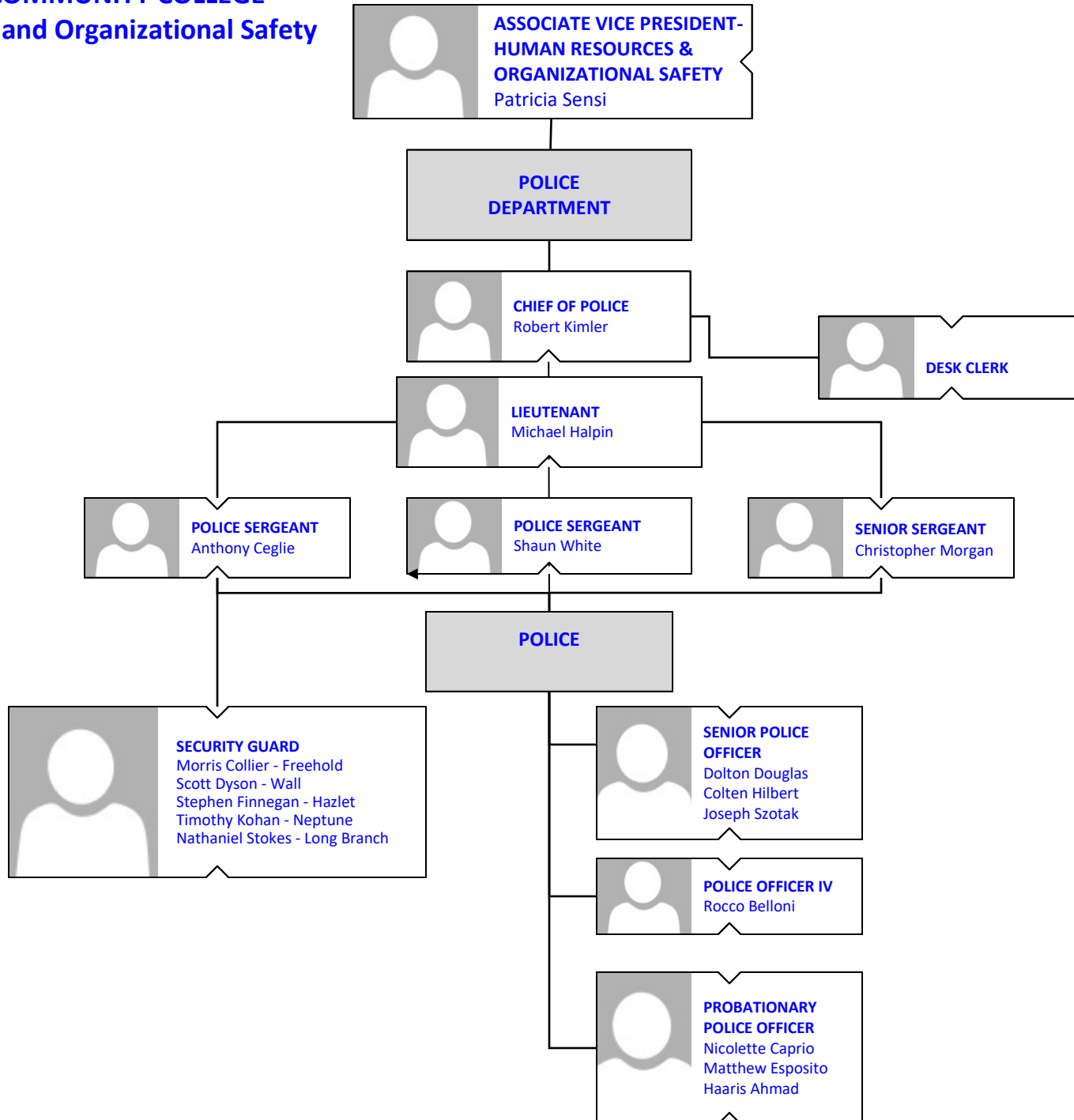
- BENEFITS
- HR SERVICES
- EMPLOYMENT
- PROFESSIONAL DEVELOPMENT
- DIVERSITY, INCLUSION & COMPLIANCE

- POLICE
- SECURITY

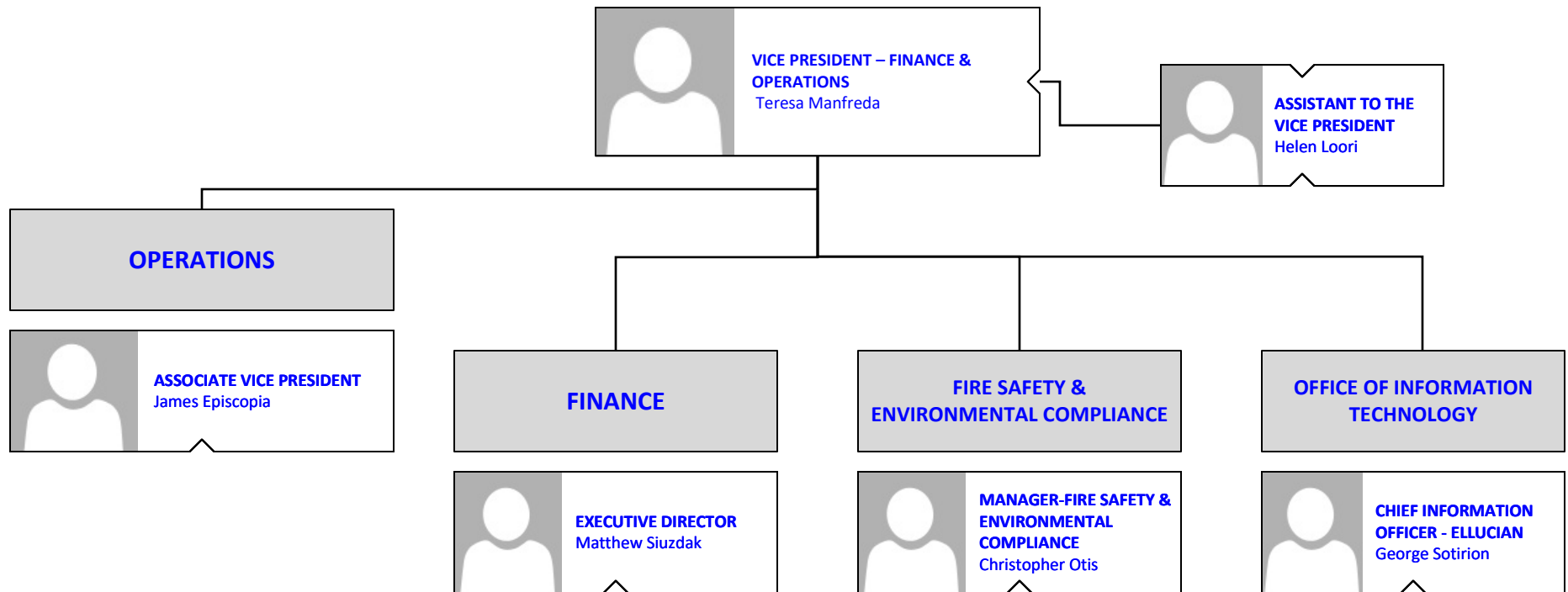
**BROOKDALE COMMUNITY COLLEGE**  
**Human Resources and Organizational Safety**



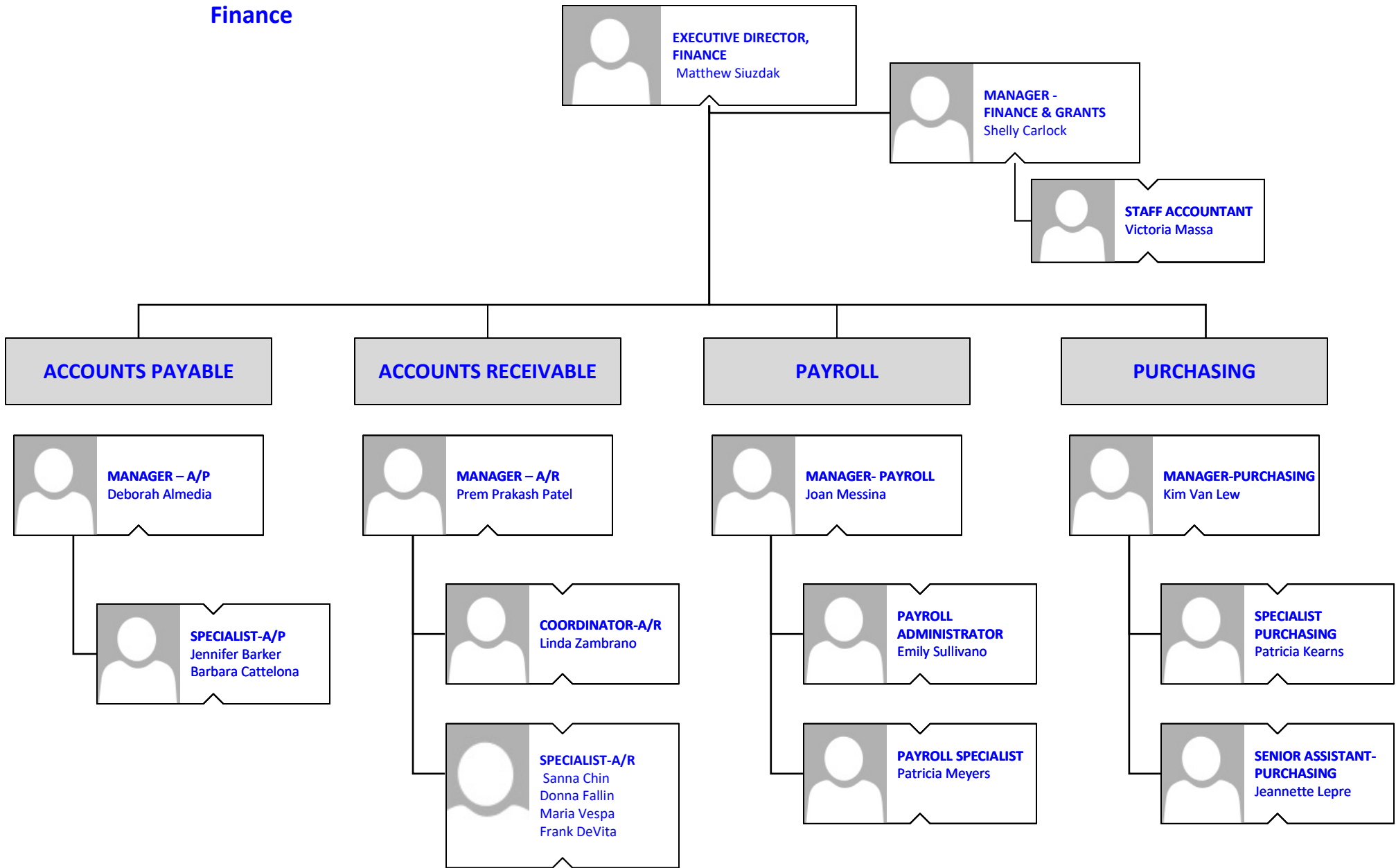
**BROOKDALE COMMUNITY COLLEGE**  
**Human Resources and Organizational Safety**



**BROOKDALE COMMUNITY COLLEGE**  
**Finance & Operations**

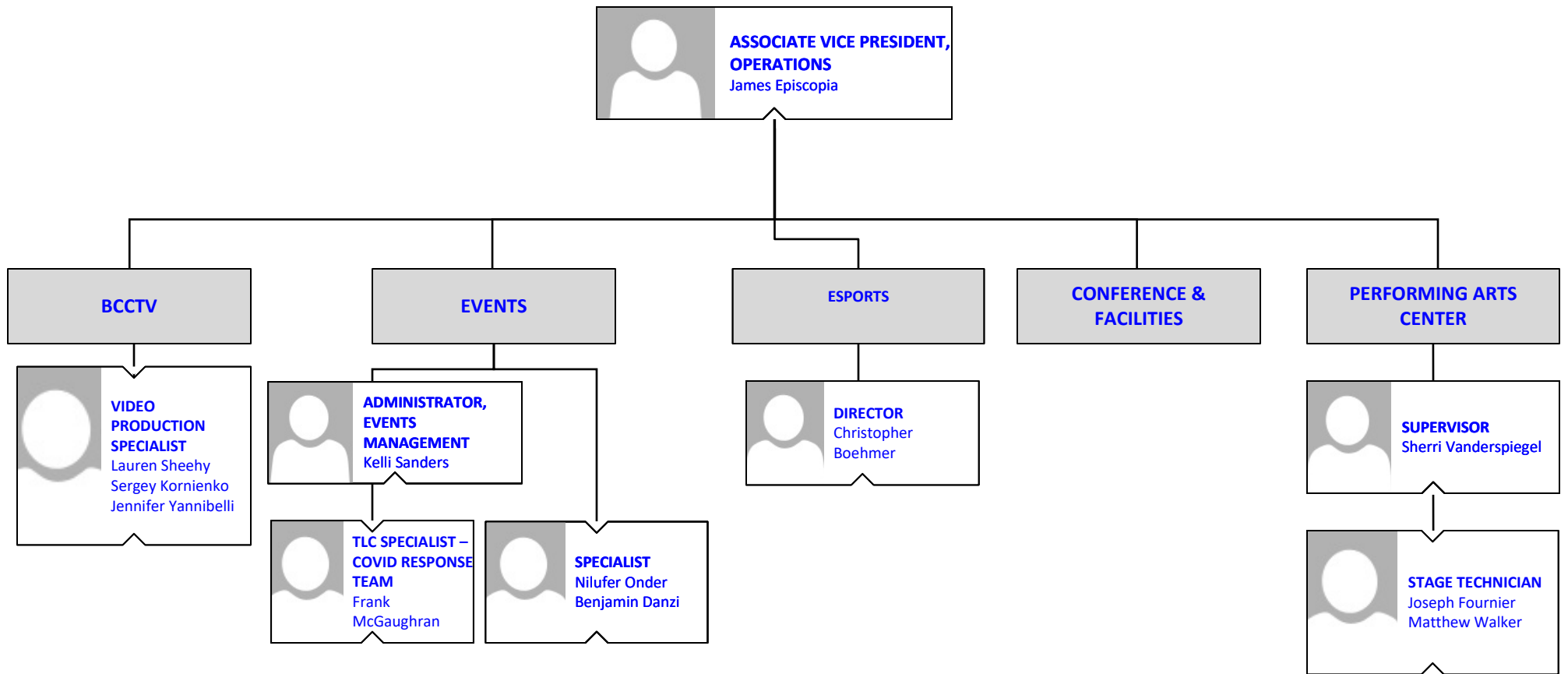


**BROOKDALE COMMUNITY COLLEGE**  
**Finance**




# BROOKDALE COMMUNITY COLLEGE

## Operations

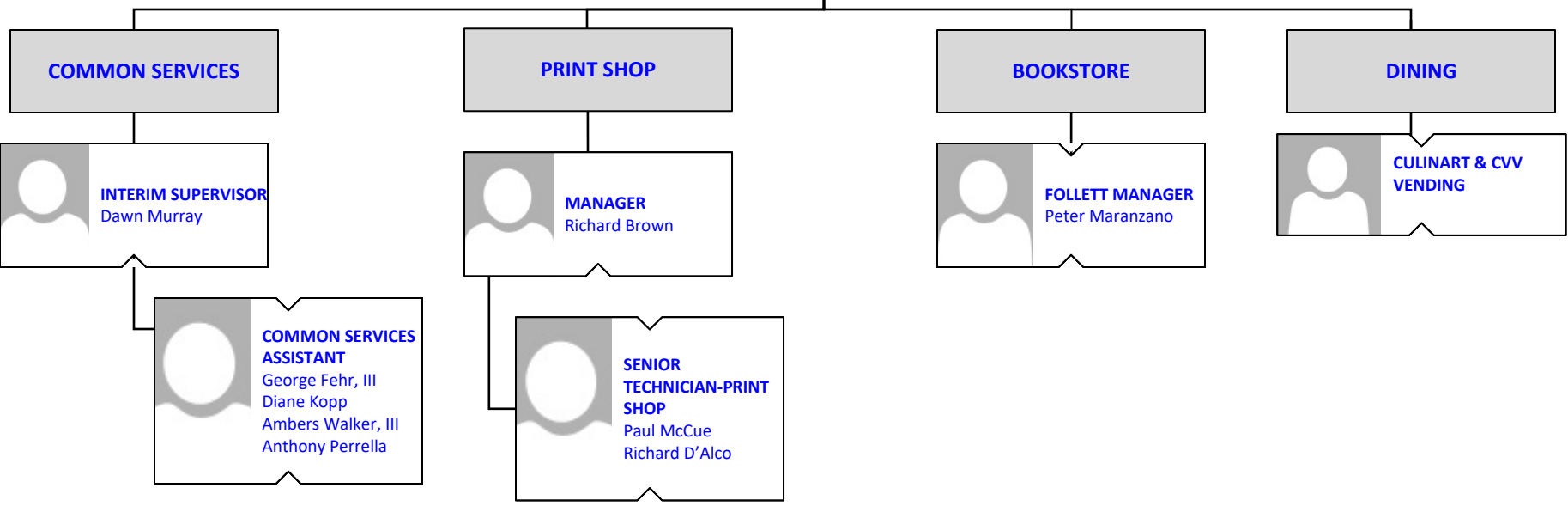


# BROOKDALE COMMUNITY COLLEGE

## Operations



**ASSOCIATE VICE PRESIDENT,  
OPERATIONS**  
James Episcopia



**BROOKDALE COMMUNITY COLLEGE**  
**Facilities**

