





Organizational Chart

- Board of Trustees ... 2
- President's Office ... 3 - 4
- Advancement ... 5
 - College Relations ... 6
- Academic Affairs ... 7
 - Educational Access and Innovation ... 8 - 11
 - STEM ... 12 - 16
 - Humanities ... 17 - 21
 - Business & Social Science ... 22 – 26
 - Health Science ... 27 - 29
- Continuing & Professional Studies ... 30 - 32
- Student Affairs ... 33
 - Enrollment Services ... 34 - 37
 - Student Services ... 38
 - Student Engagement... 39
- Planning & Institutional Effectiveness ... 40
- Human Resources & Organizational Safety ... 41 - 43
- Finance & Operations ... 44
 - Finance ... 45
 - Operations ... 46-48

BROOKDALE COMMUNITY COLLEGE
Board of Trustees




CHAIR
Henry Gram




**PRESIDENT / SECRETARY
TO BOARD OF TRUSTEES**
David Stout




VICE CHAIR
Francis Bret Kaufmann




BOARD MEMBER
Paul Crupi




BOARD MEMBER
Tracey Abby-White




BOARD MEMBER
Dyese Davis




BOARD MEMBER
Barbara Horl




BOARD MEMBER
Mary Pat Angelini




BOARD MEMBER
Latonya Brennan



BOARD MEMBER
Austin Smith



BOARD MEMBER
Marta Rambaud



BOARD MEMBER
Lester W. Richens

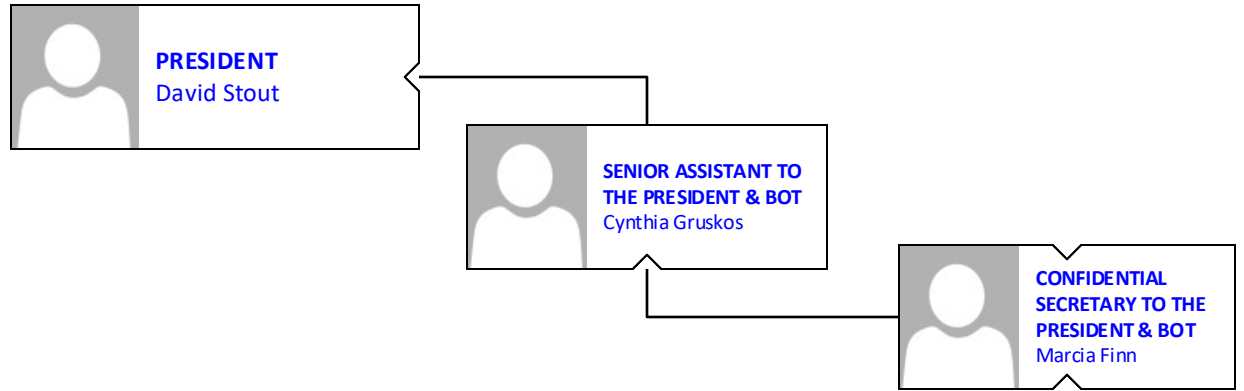


BOARD MEMBER
Natalie Watson



COLLEGE COUNSEL
Cleary, Giacobbe,
Alfieri & Jacobs

BROOKDALE COMMUNITY COLLEGE
Office of the President



**INTERIM VICE PRESIDENT,
ACADEMIC AFFAIRS**
Joan Scocco

**VICE PRESIDENT, FINANCE
& OPERATIONS**
Teresa Manfreda

**VICE PRESIDENT,
ADVANCEMENT**
Nancy Kaari

**VICE PRESIDENT, STUDENT
AFFAIRS**
Yesenia Madas

**ASSOCIATE VICE
PRESIDENT, PLANNING &
INSTITUTIONAL
EFFECTIVENESS**
Nancy Kegelman

**ASSOCIATE VICE
PRESIDENT, STRATEGIC
PARTNERSHIPS**
Anita Voogt

**ASSOCIATE VICE
PRESIDENT, HUMAN
RESOURCES &
ORGANIZATIONAL SAFETY**
Patricia Sensi

**ASSOCIATE VICE
PRESIDENT, OPERATIONS**
James Episcopia

**EXECUTIVE DIRECTOR,
COLLEGE RELATIONS**
Kathleen Kamatani

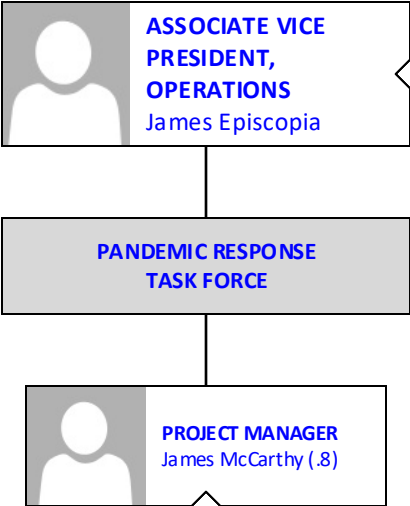
**ACTING DEAN,
CONTINUING &
PROFESSIONAL STUDIES**
Susan Pagano

**EXECUTIVE DIRECTOR –
GOVERNMENTAL AFFAIRS
& COMMUNITY RELATIONS**
Edward Johnson

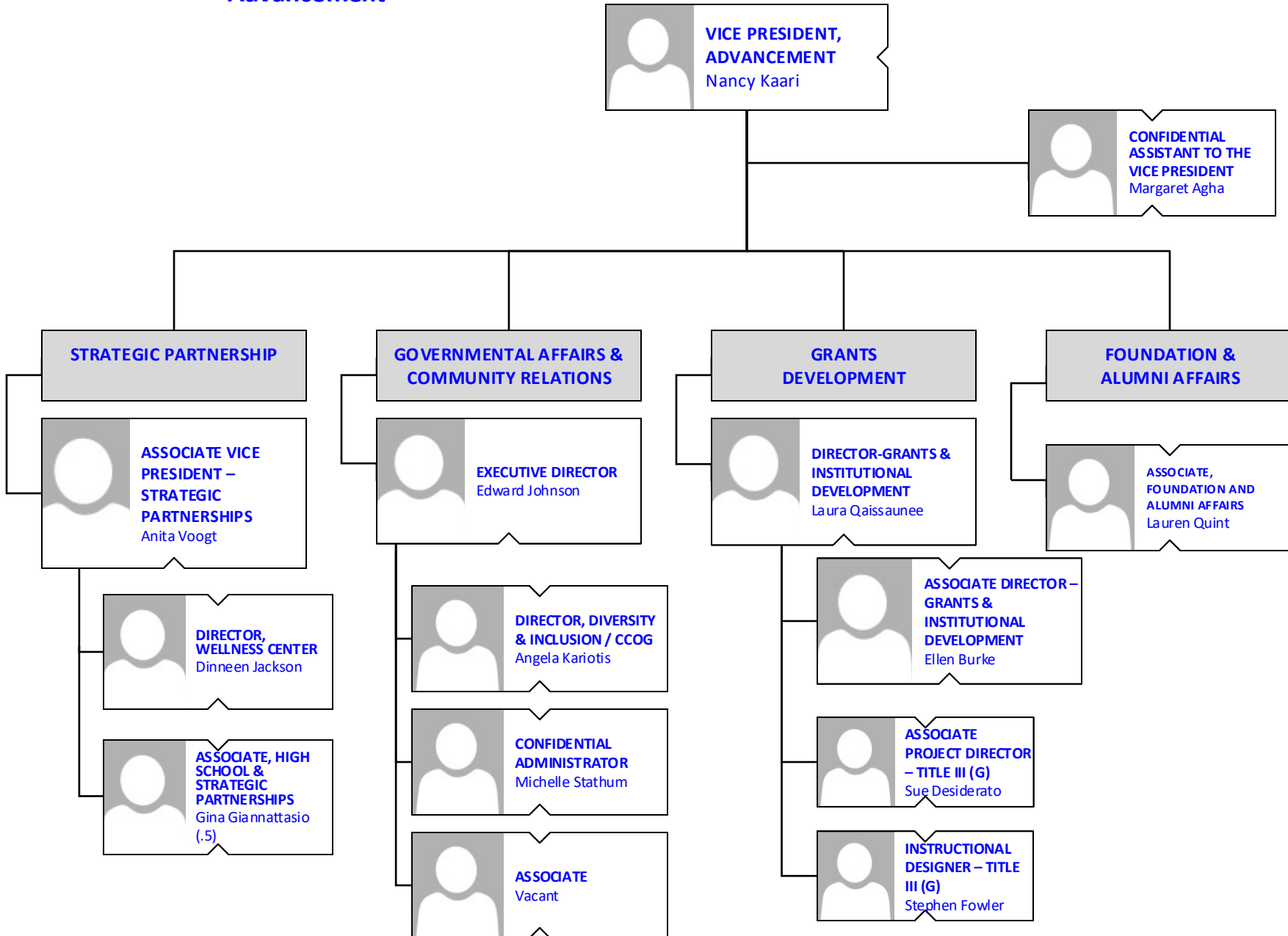
LEGAL AFFAIRS OFFICER
Bonnie Passarella

**DIRECTOR, SPECIAL
PROJECTS**
Ann Marie Sparaco

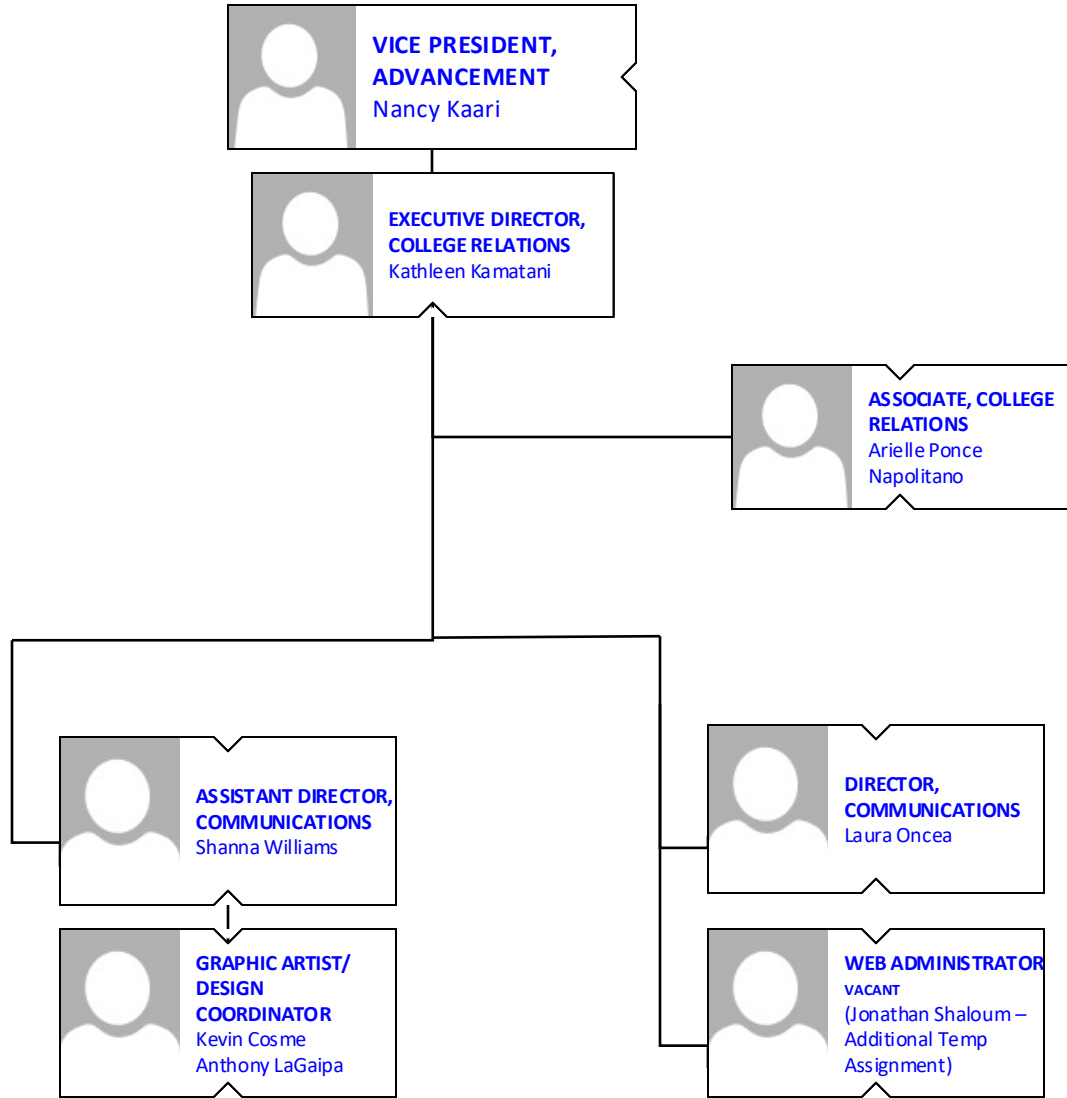
BROOKDALE COMMUNITY COLLEGE
Pandemic Response Task Force



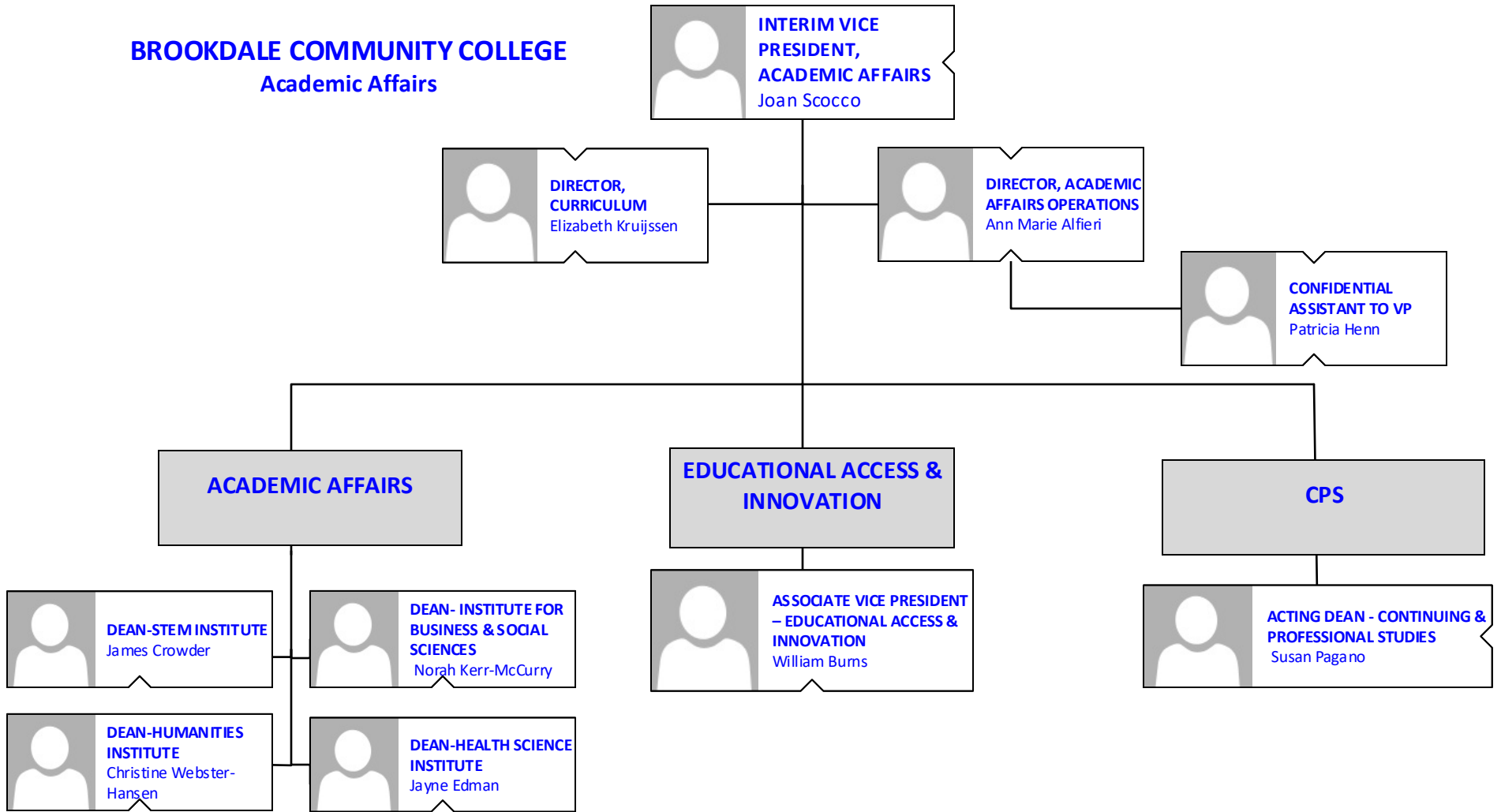
BROOKDALE COMMUNITY COLLEGE
Advancement



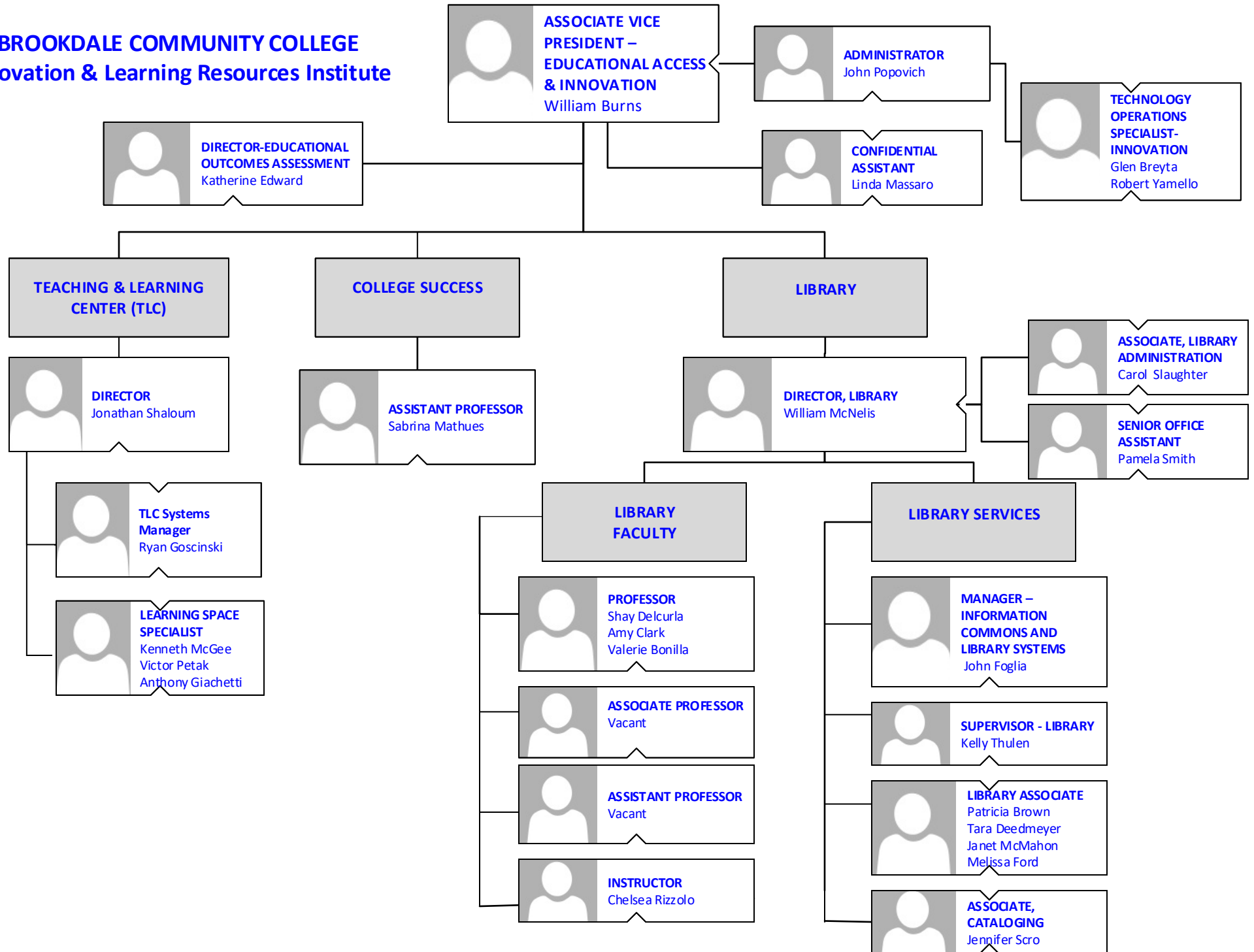
BROOKDALE COMMUNITY COLLEGE
Advancement
College Relations



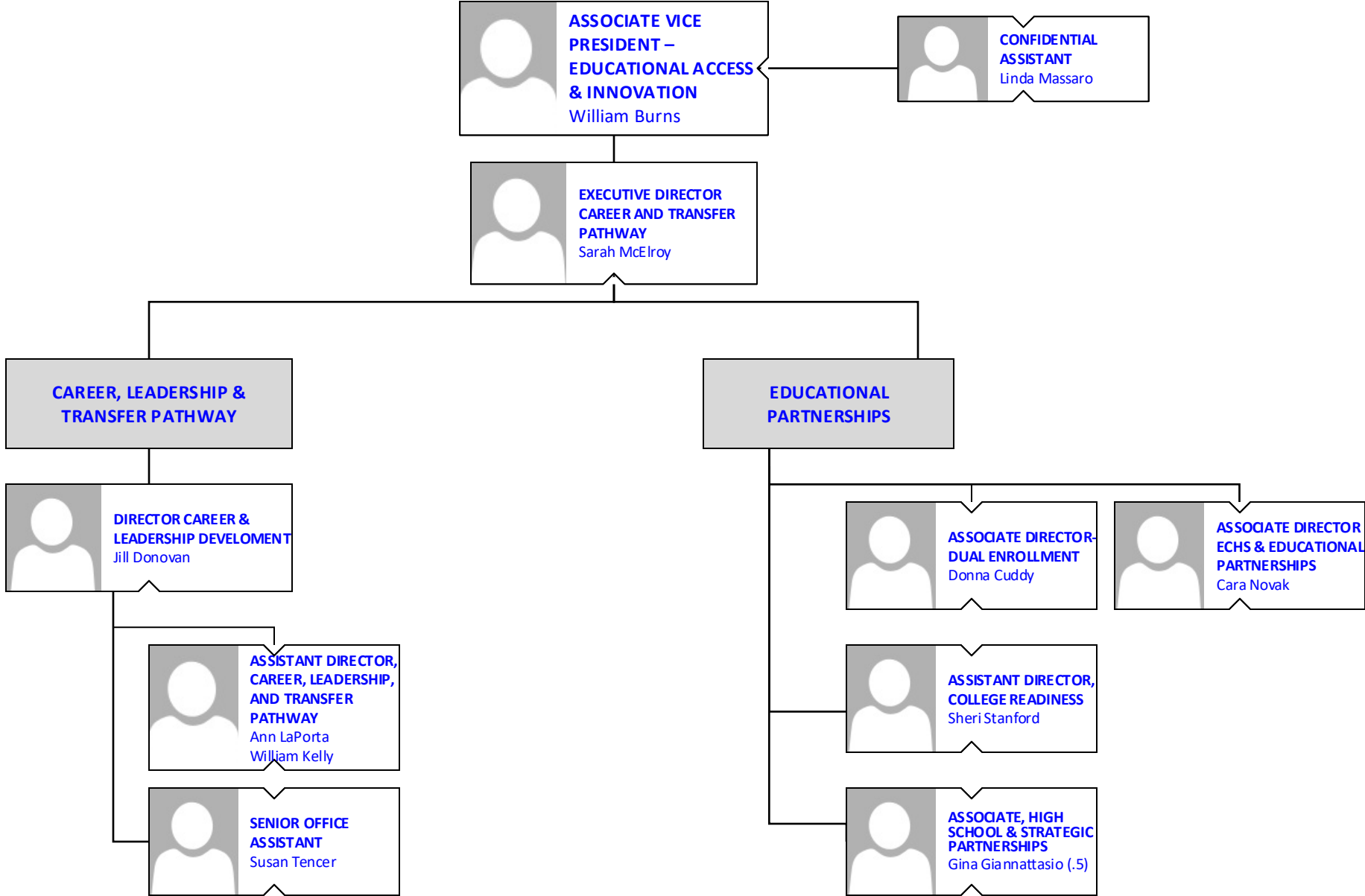
BROOKDALE COMMUNITY COLLEGE
Academic Affairs



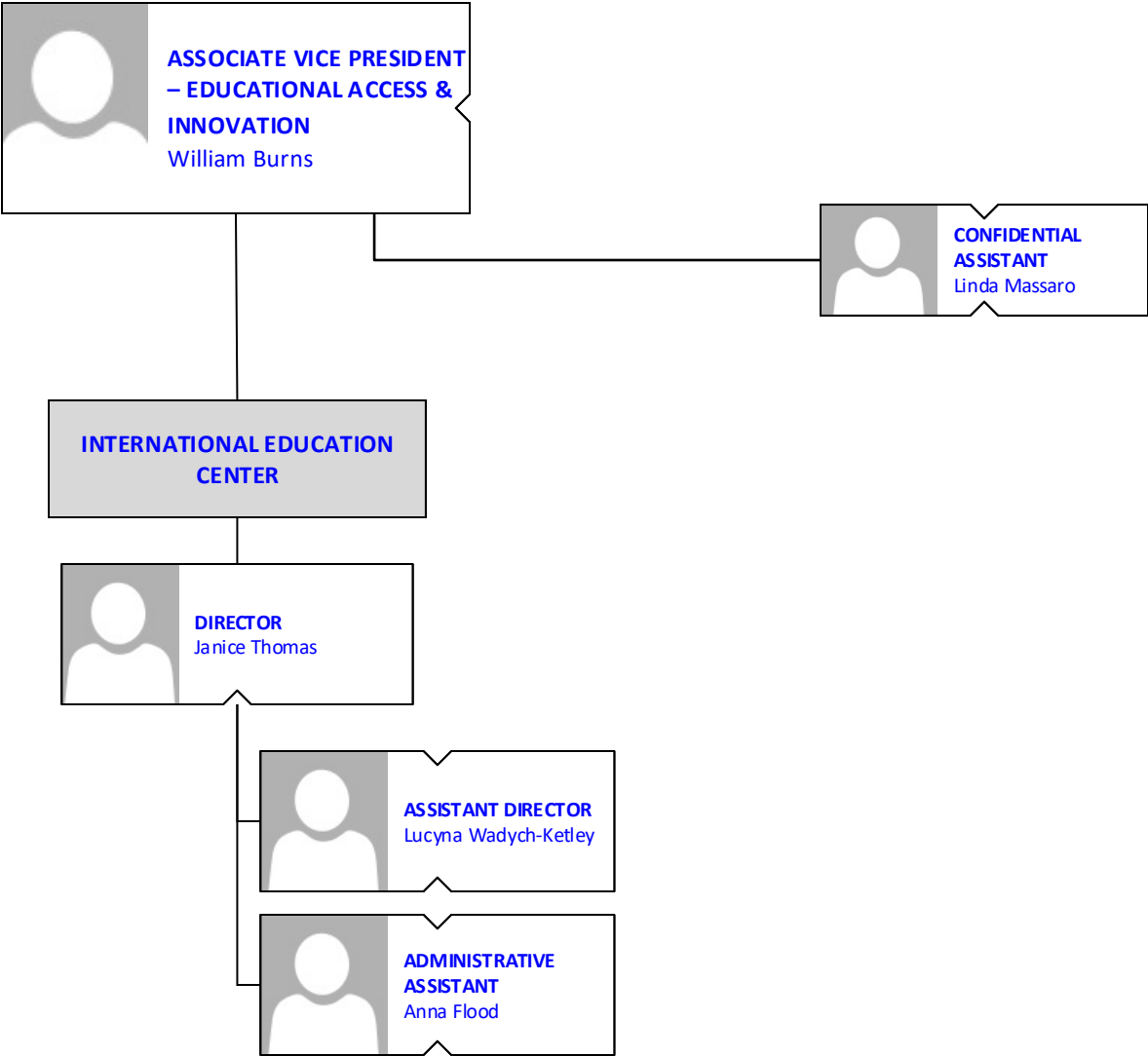
BROOKDALE COMMUNITY COLLEGE
Innovation & Learning Resources Institute



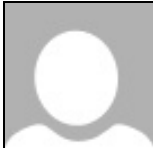
BROOKDALE COMMUNITY COLLEGE
Career and Transfer Pathway



BROOKDALE COMMUNITY COLLEGE
International Education Center



BROOKDALE COMMUNITY COLLEGE
Communication Media
&
Radio Station


 **ASSOCIATE VICE PRESIDENT
– EDUCATIONAL ACCESS &
INNOVATION**
William Burns

**COMMUNICATION
MEDIA**

 **PROFESSOR**
Deborah Mura
Chad Anderson

 **ASSOCIATE PROFESSOR**
Vacant

 **ASSISTANT PROFESSOR**
Matthew Montemorano

 **LAB ASSISTANT**
Justin Guerrieri

**RADIO
STATION**

 **MANAGER, RADIO**
Thomas Brennan

 **MANAGER – SALES &
DEVELOPMENT**
Kristin Florio

 **PROGRAMMING
COORDINATOR**
Richard Robinson

 **SPECIALIST, RADIO
STATION**
Anthony Fox (G)
Michele McBride
Jeffrey Raspe

BROOKDALE COMMUNITY COLLEGE
Academic Affairs: STEM Institute



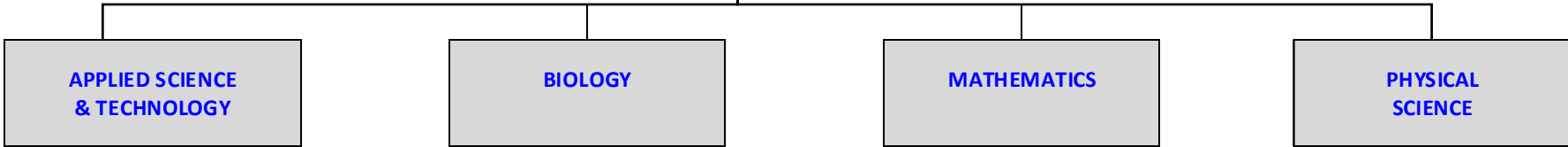
INSTITUTE DEAN - STEM
James Crowder



INSTITUTE ADMINISTRATOR
Mary Rose Boutote



SENIOR OFFICE ASSISTANT
April Brinson
Melissa Doran



APPLIED SCIENCE & TECHNOLOGY

AUTOMOTIVE TECHNOLOGY

COMPUTER SCIENCE

ENGINEERING & TECHNOLOGIES

BIOLOGY

BIOLOGY

MATHEMATICS

MATHEMATICS

PHYSICAL SCIENCE

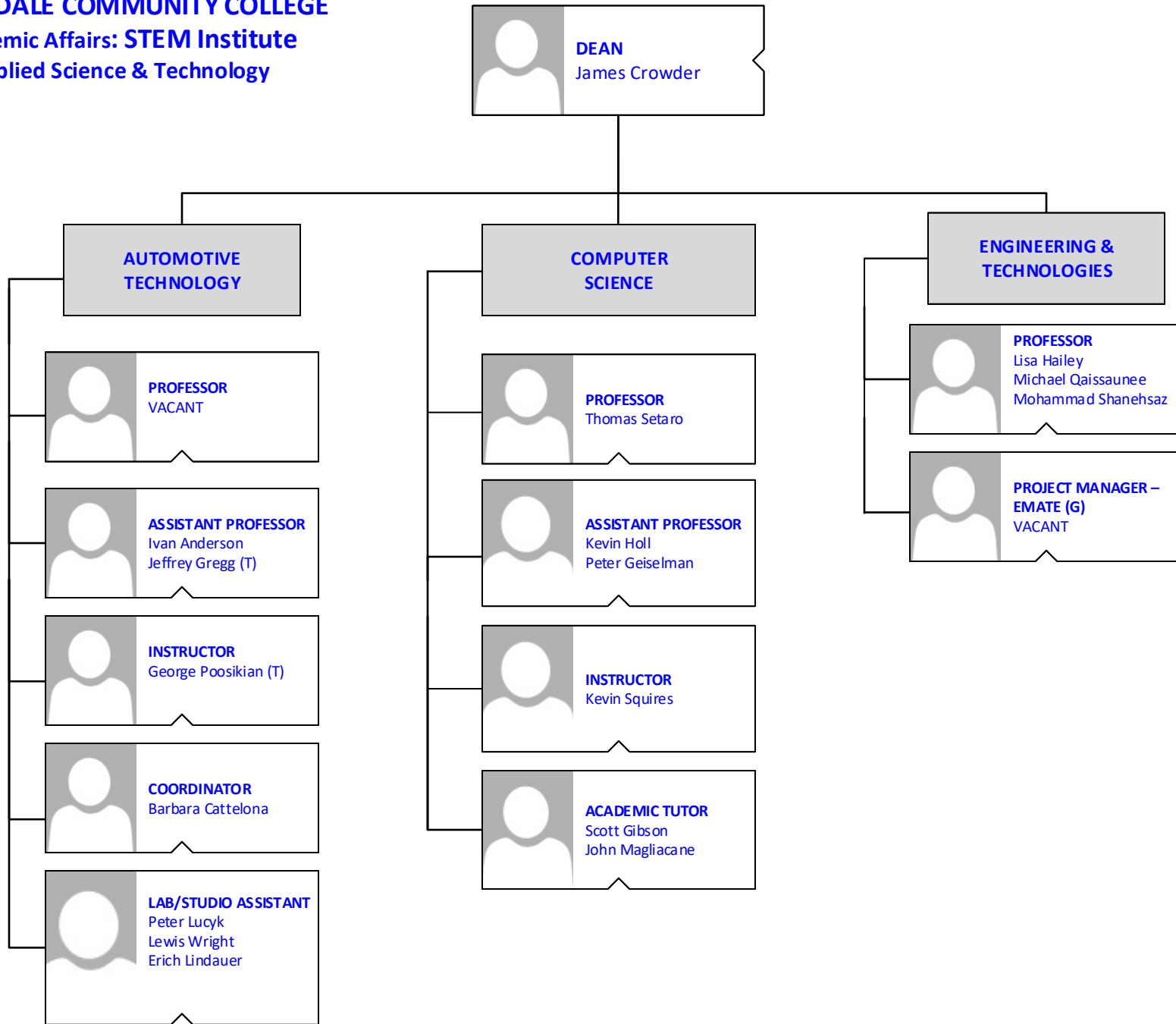
CHEMISTRY

ENVIRONMENTAL SCIENCE

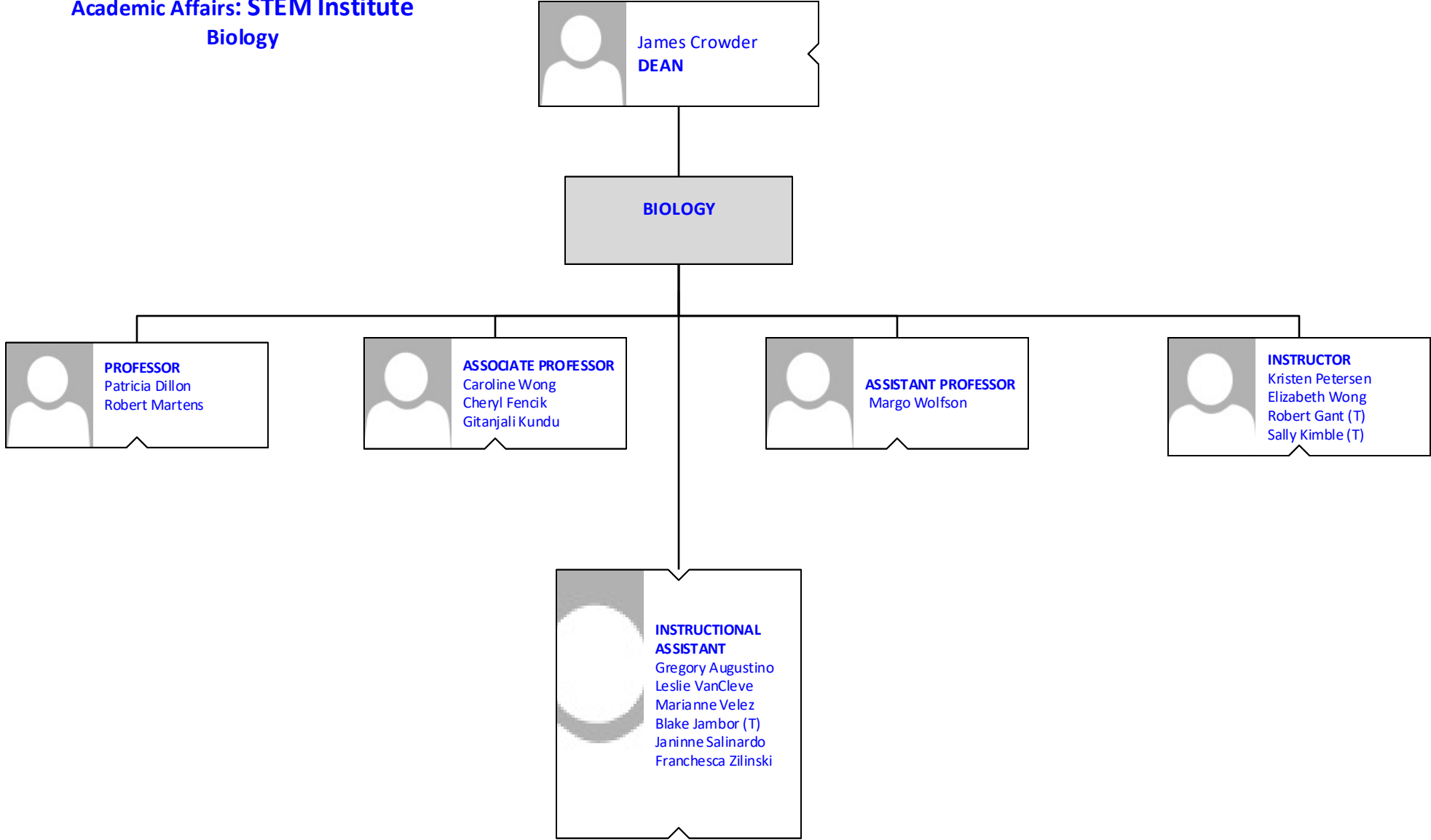
PHYSICS

BROOKDALE COMMUNITY COLLEGE


**Academic Affairs: STEM Institute
Applied Science & Technology**



BROOKDALE COMMUNITY COLLEGE
Academic Affairs: STEM Institute
Biology



BROOKDALE COMMUNITY COLLEGE
Academic Affairs: STEM Institute
Mathematics



DEAN
James Crowder

MATHEMATICS



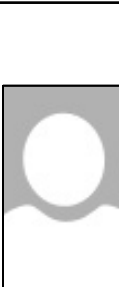
PROFESSOR
Teresa Healy
Gregory Liano
Brian McKeon
Glenn Noe
Arminda Wey
Daniel Lopez
Rebecca Rozario




ASSOCIATE PROFESSOR
Susan Monroe
Andrew Panitz
Nathalie Darden
Hanli Huang
Gabriela Sprague
Michael Elmes
Ashley Tasy
Ana Teodorescu



ASSISTANT PROFESSOR
Robert Fiore
Stephen Hiamang
Abdul Rahman Kamara
Sally Mulvey
James Poinsett
Spyro Roubos
Karina Ochs
Prince Sekyi

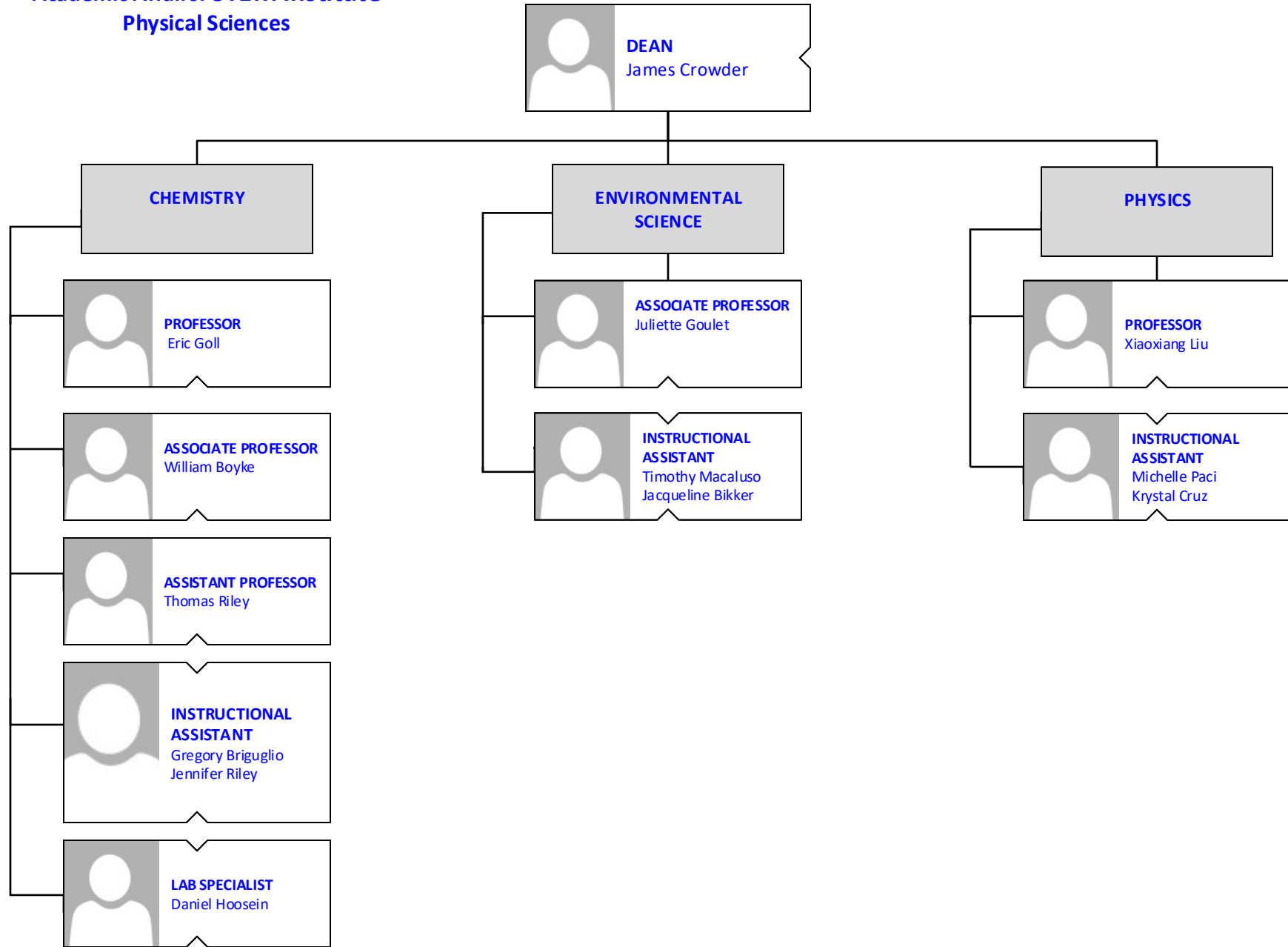


INSTRUCTOR
Samantha Doluweera
Michael Nolan
Arianne Ross

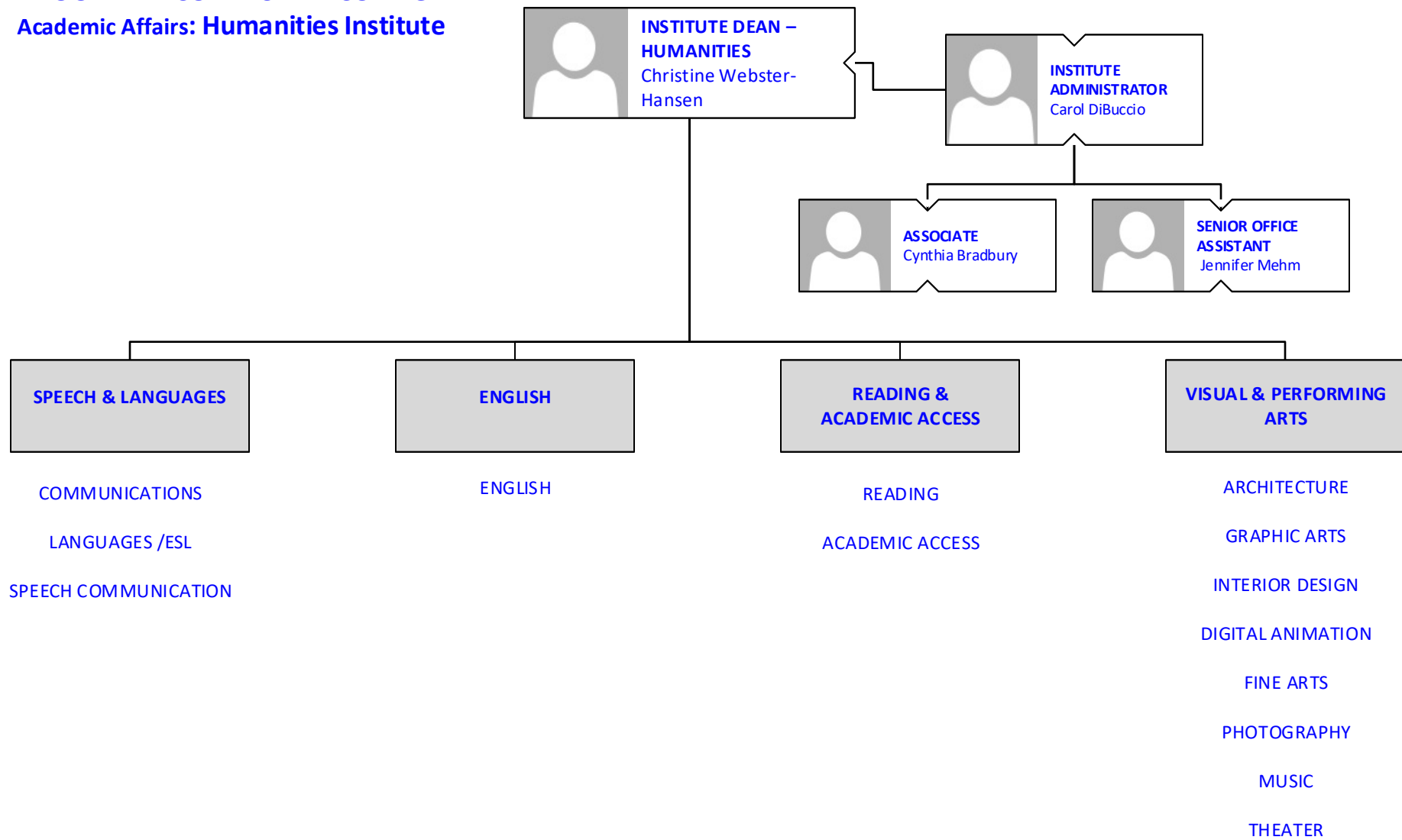


ACADEMIC TUTOR
Deicy Ahmad-Chautre
Ahmed Said
Heeja Kwon
Kamala Das
Adam Winkler

BROOKDALE COMMUNITY COLLEGE
Academic Affairs: STEM Institute
Physical Sciences



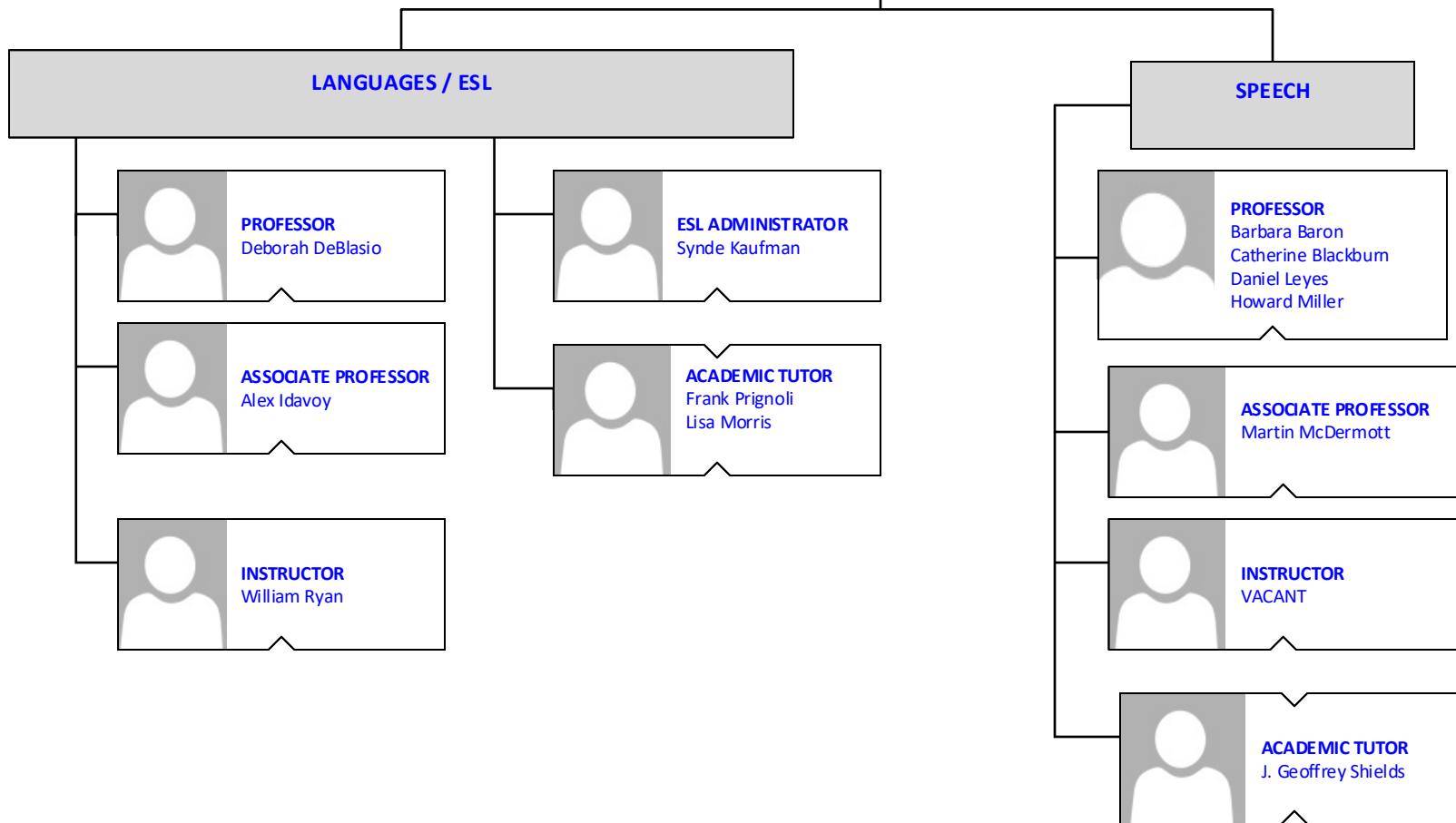
BROOKDALE COMMUNITY COLLEGE
Academic Affairs: Humanities Institute



BROOKDALE COMMUNITY COLLEGE
Academic Affairs: Humanities Institute
Speech & Languages



DEAN
Christine Webster-
Hansen



BROOKDALE COMMUNITY COLLEGE
Academic Affairs: Humanities Institute
English




DEAN
Christine Webster-
Hansen


ENGLISH




PROFESSOR
Roseanne Alvarez
Bettejane Bolan-Kenney
Marc Bonagura
James Cody
Donna Flinn
Marcia Krefetz-Levine
Laura McCullough
Nancy Noe
Kurt Scheffler
Brandon Gramer
Kathleen Kennedy
Angela Saragusa
Suzanne Parker
Dara Evans
Donna Pope
Christine Vasquez




ASSOCIATE PROFESSOR
Michael Broek
Geri Girard
Jennifer Kaminski
Kelsey Maki
Charles Mencil



ASSISTANT PROFESSOR
Richard Dery
Dina Long
John Ryan
Michele Locandro
Cameron Mount
Emily Hoeflinger
Elana Maloney
Nicolette Nicola

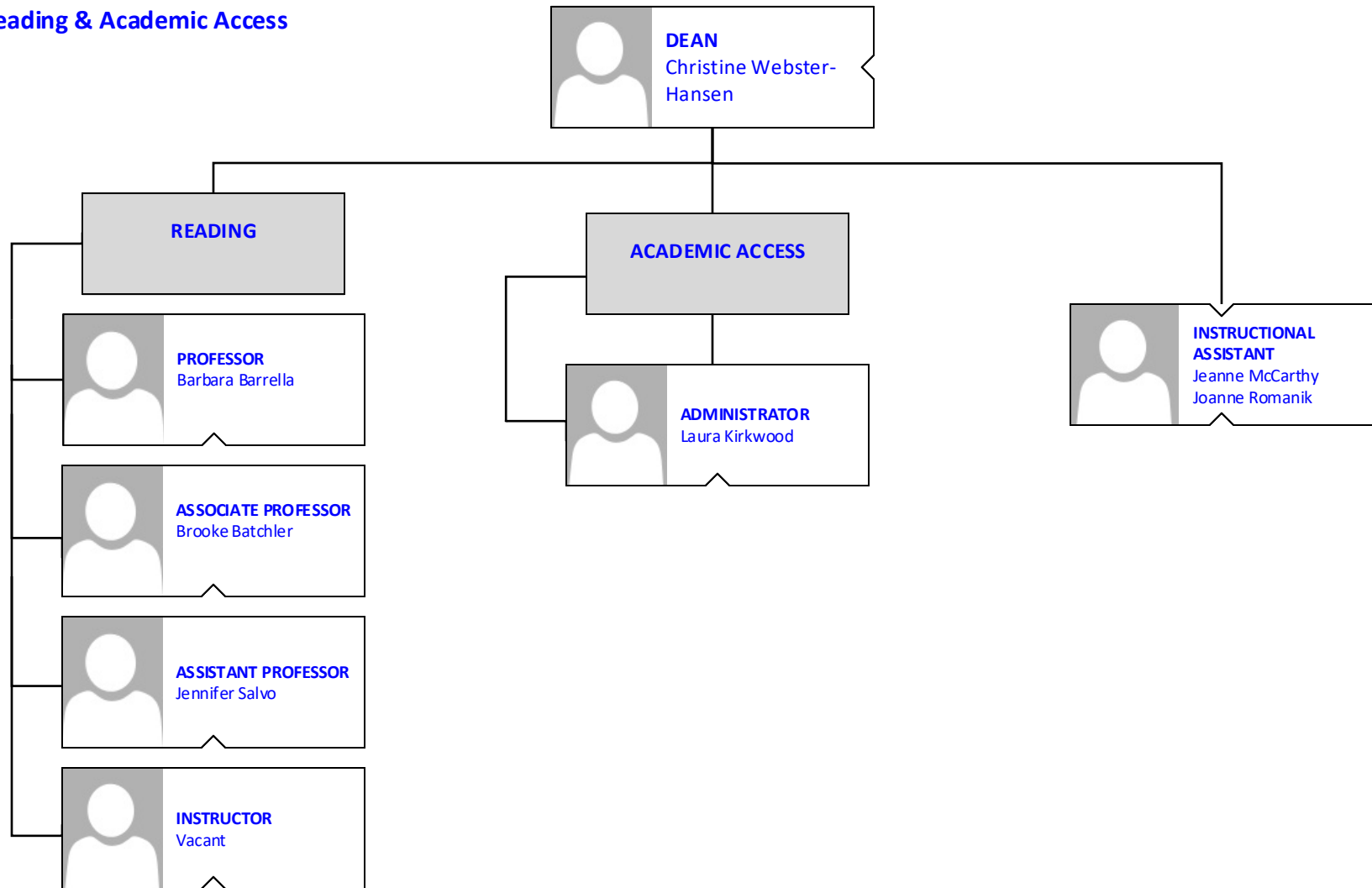


INSTRUCTOR
Heather Revesz
Shayla Ward
Mary Grilli



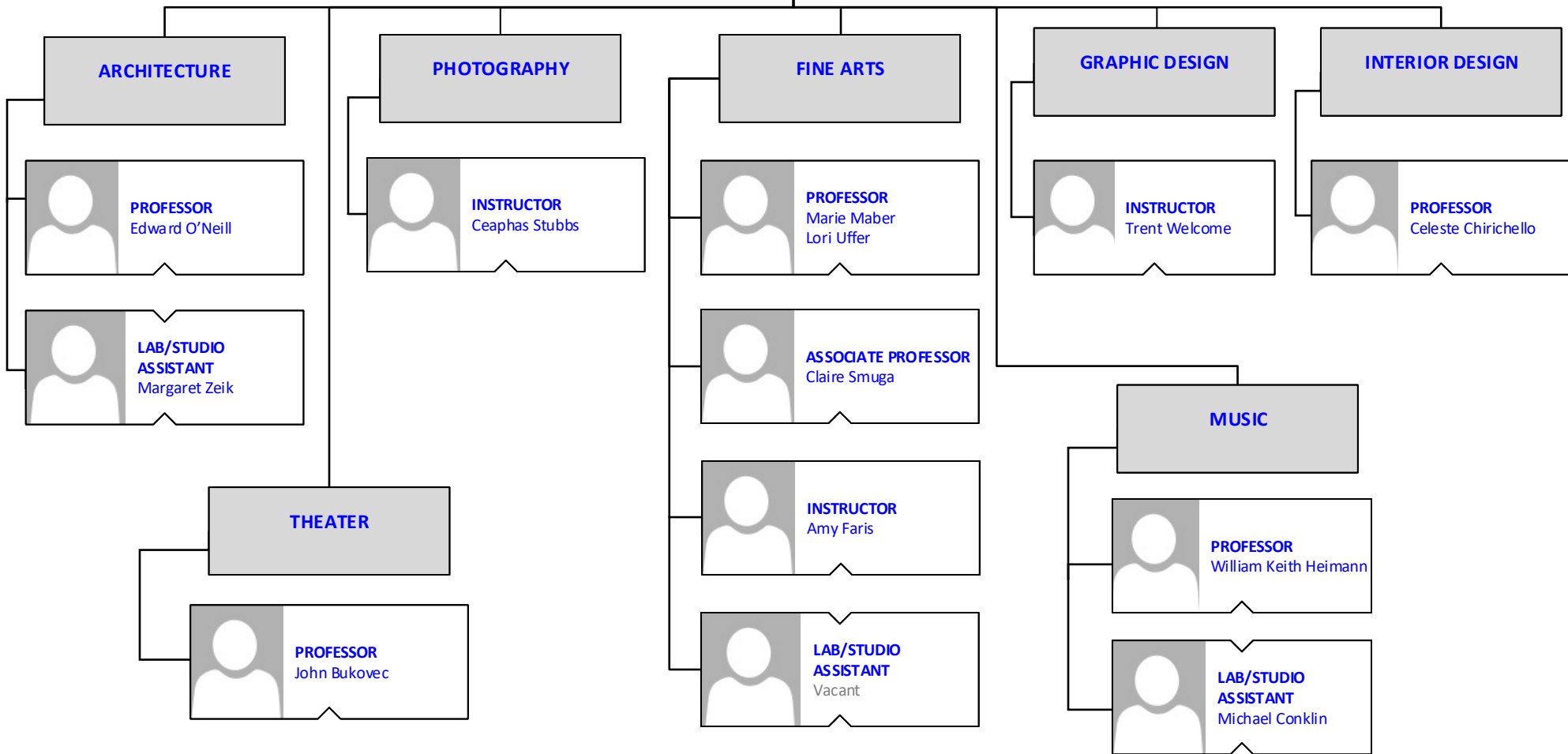
ACADEMIC TUTOR
Dolores Palazzo
Kathleen Vasile
Bridget Van Hemert
Leah Wasacz
Tanaporn Jampathom

BROOKDALE COMMUNITY COLLEGE
Academic Affairs: Humanities Institute
Reading & Academic Access



BROOKDALE COMMUNITY COLLEGE
Academic Affairs: Humanities Institute
Visual & Performing Arts

 **DEAN**
Christine Webster-Hansen



BROOKDALE COMMUNITY COLLEGE
Academic Affairs: Institute for Business
&
Social Science



**INSTITUTE DEAN –
 BUSINESS & SOCIAL
 SCIENCES**
 Norah Kerr-McCurry

**HONORS
 PROGRAM**

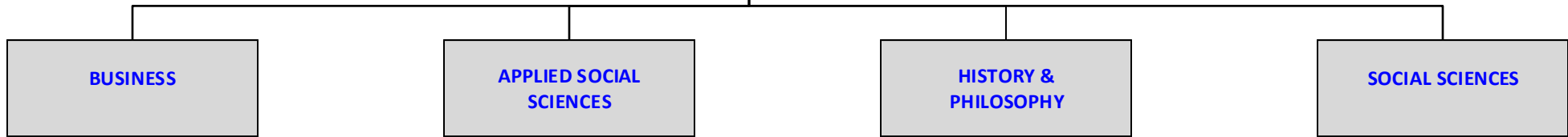
**CENTER FOR
 WORLD WAR II STUDIES &
 CONFLICT RESOLUTION**



**INSTITUTE
 ADMINISTRATOR**
 Kara McCoy



**SENIOR OFFICE
 ASSISTANT**
 Linda Morris
 Andrea Donahue



ACCOUNTING

BUSINESS

CULINARY ARTS

ECONOMICS

HOSPITALITY MANAGEMENT

MARKETING/FASHION
 MECHANDISING

CRIMINAL JUSTICE

EDUCATION

PARALEGAL STUDIES

HISTORY

PHILOSOPHY

ANTHROPOLOGY /
 SOCIOLOGY / HUMAN
 GEOGRAPHY

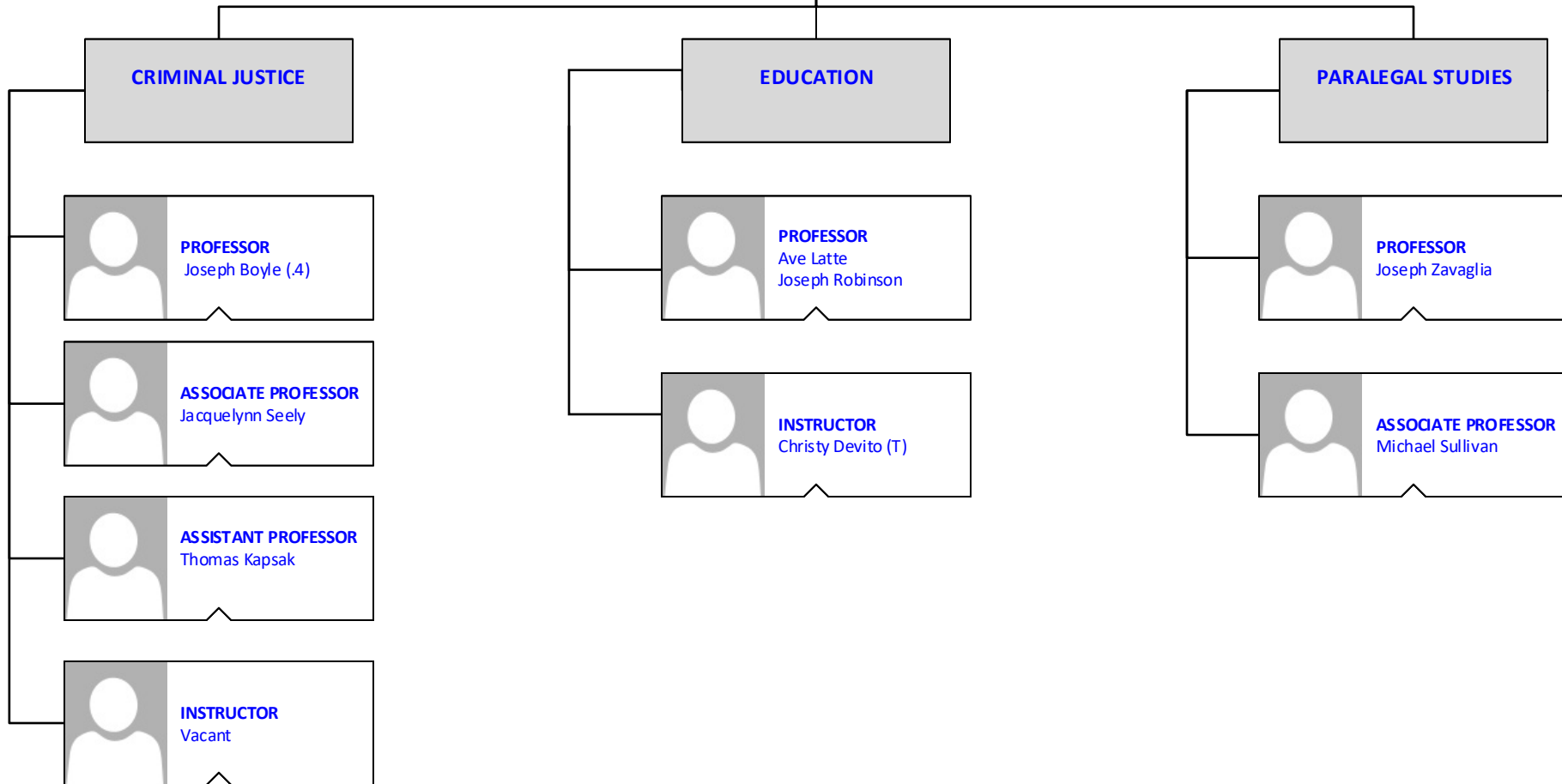
POLITICAL SCIENCE

PSYCHOLOGY

BROOKDALE COMMUNITY COLLEGE
Academic Affairs: Institute for Business &
Social Science
Applied Social Sciences

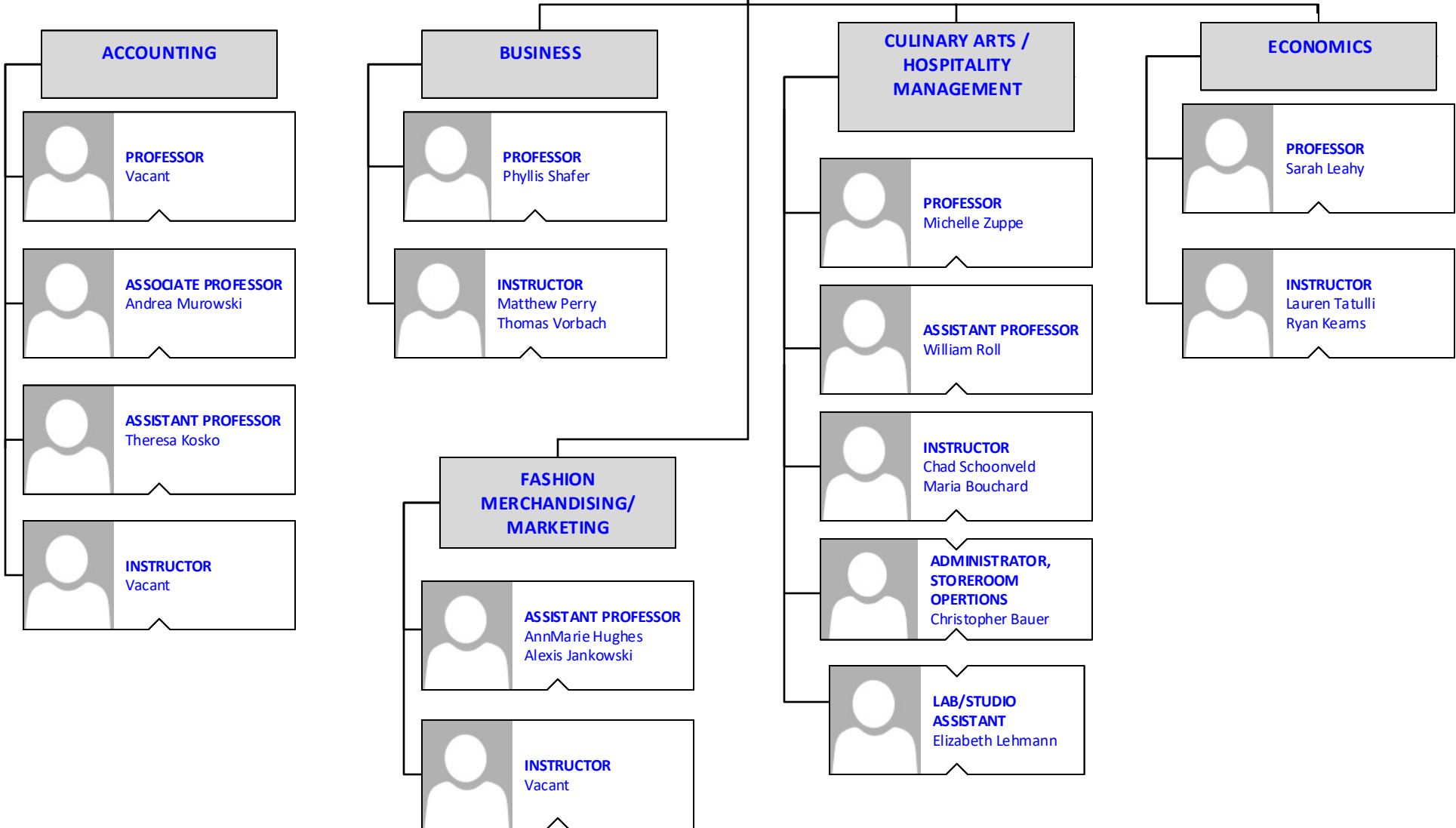


DEAN
Norah Kerr-McCurry



BROOKDALE COMMUNITY COLLEGE
Academic Affairs: Institute Business &
Social Science
Business

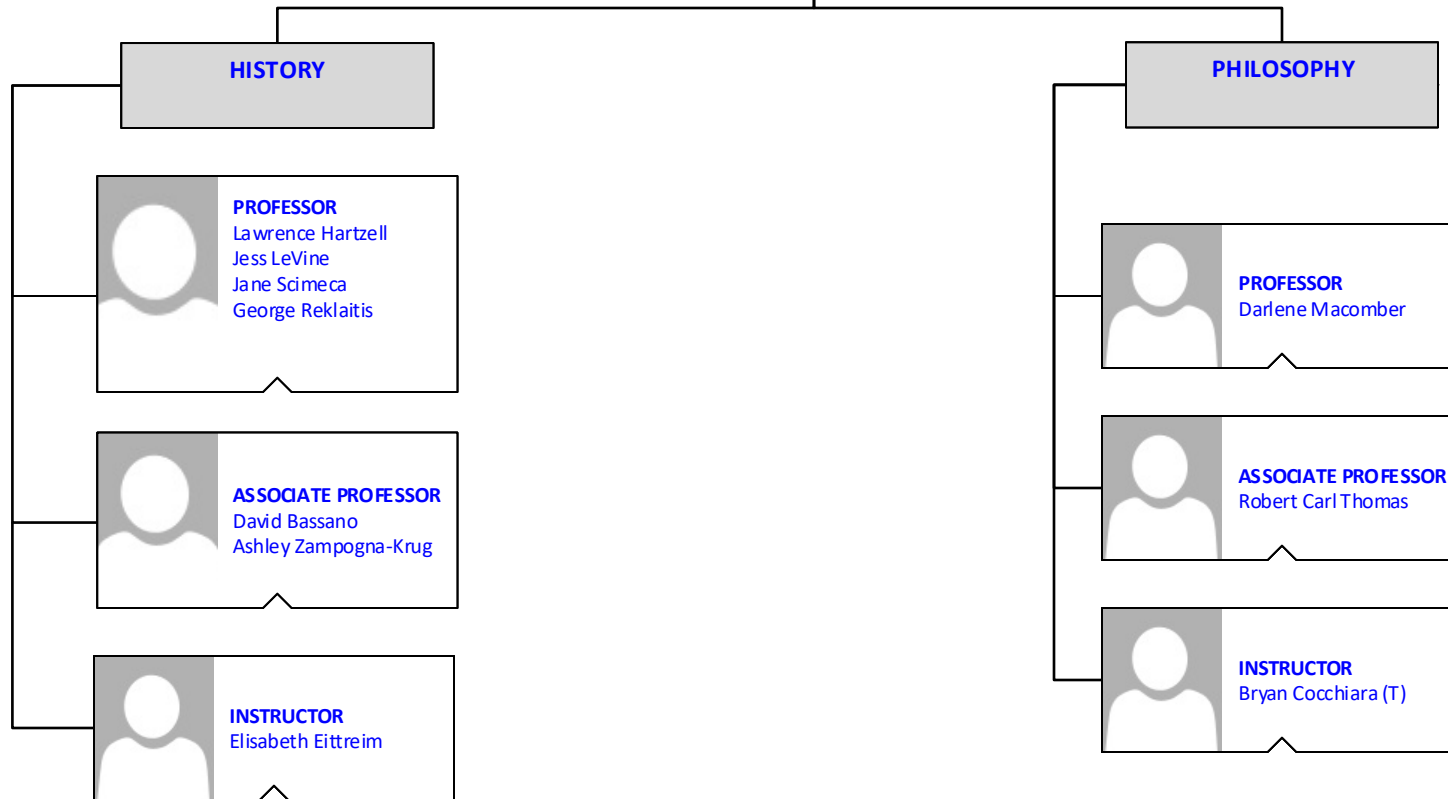
DEAN
 Norah Kerr-McCurry



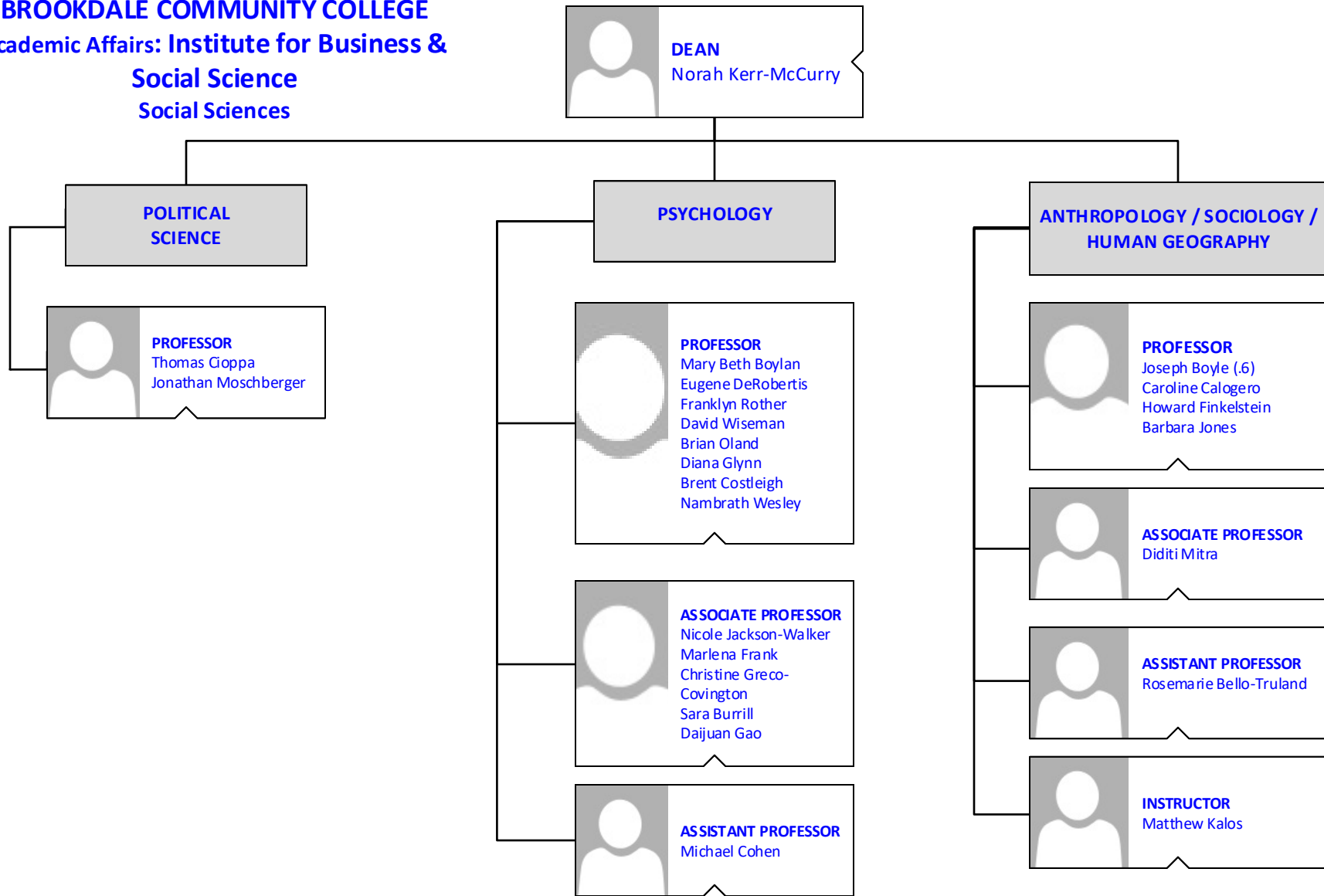
BROOKDALE COMMUNITY COLLEGE
Academic Affairs: Institute for Business &
Social Science
History & Philosophy



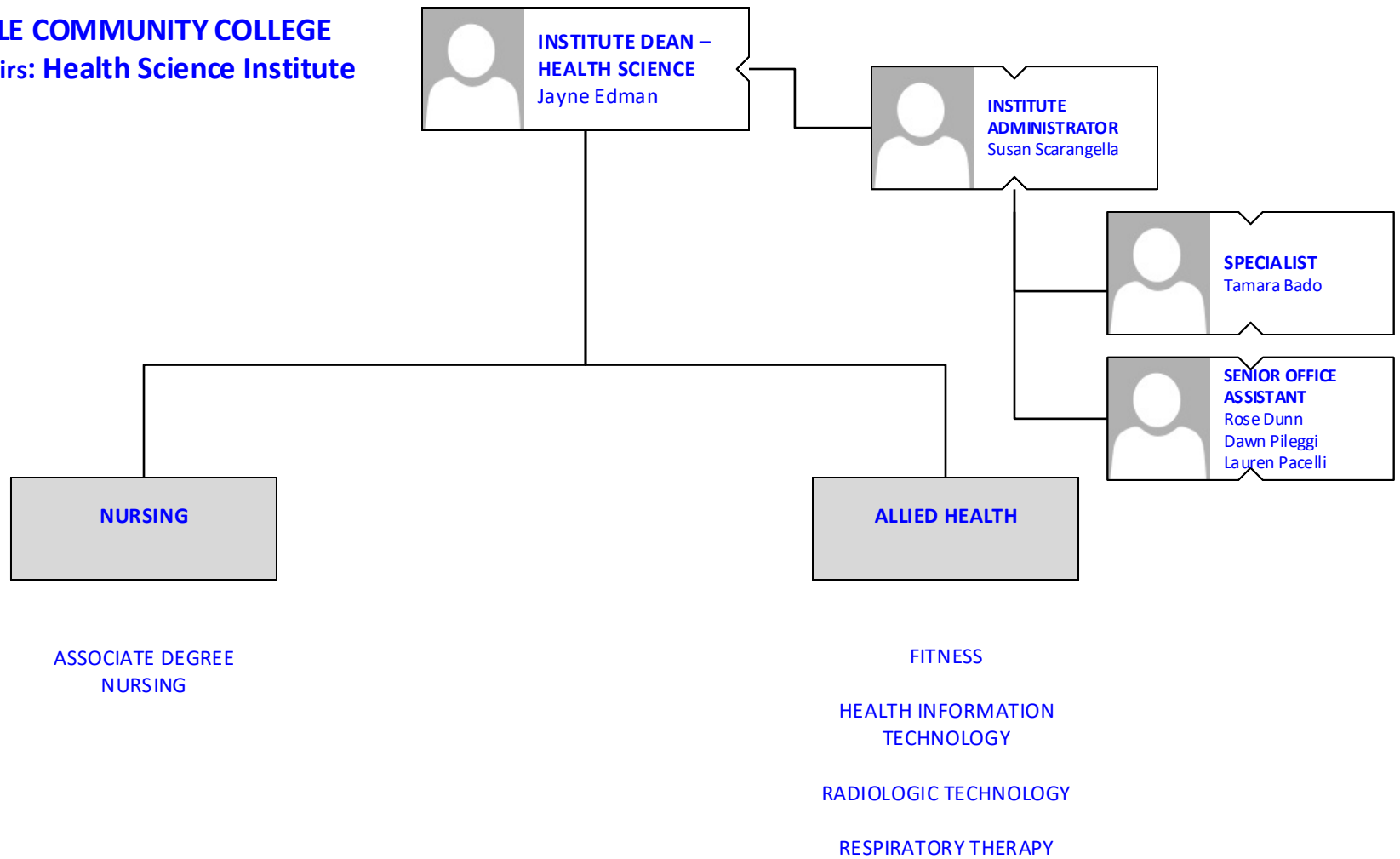
DEAN
Norah Kerr-McCurry



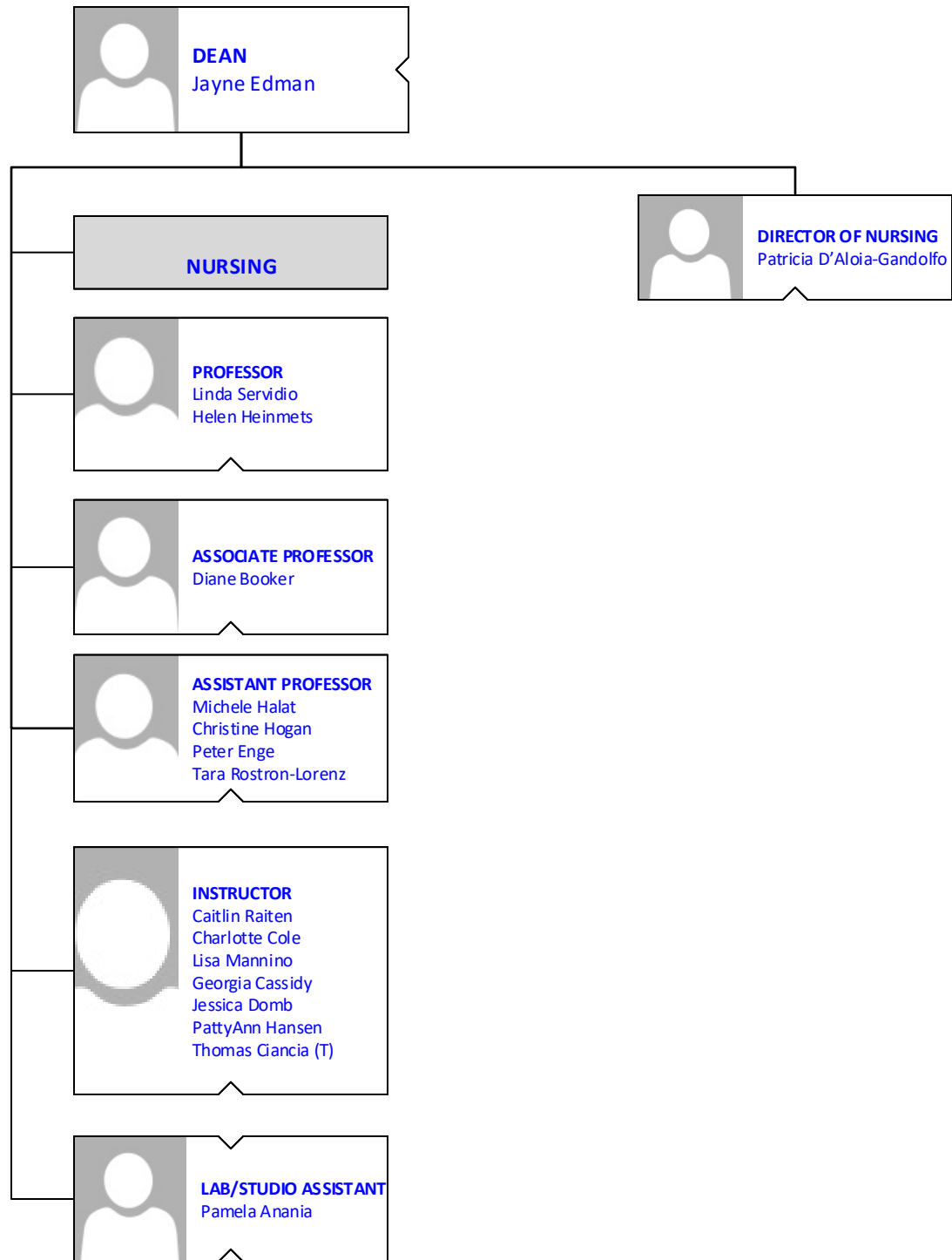
BROOKDALE COMMUNITY COLLEGE
Academic Affairs: Institute for Business &
Social Science
Social Sciences



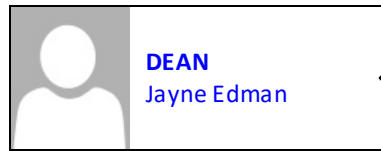
BROOKDALE COMMUNITY COLLEGE
Academic Affairs: Health Science Institute



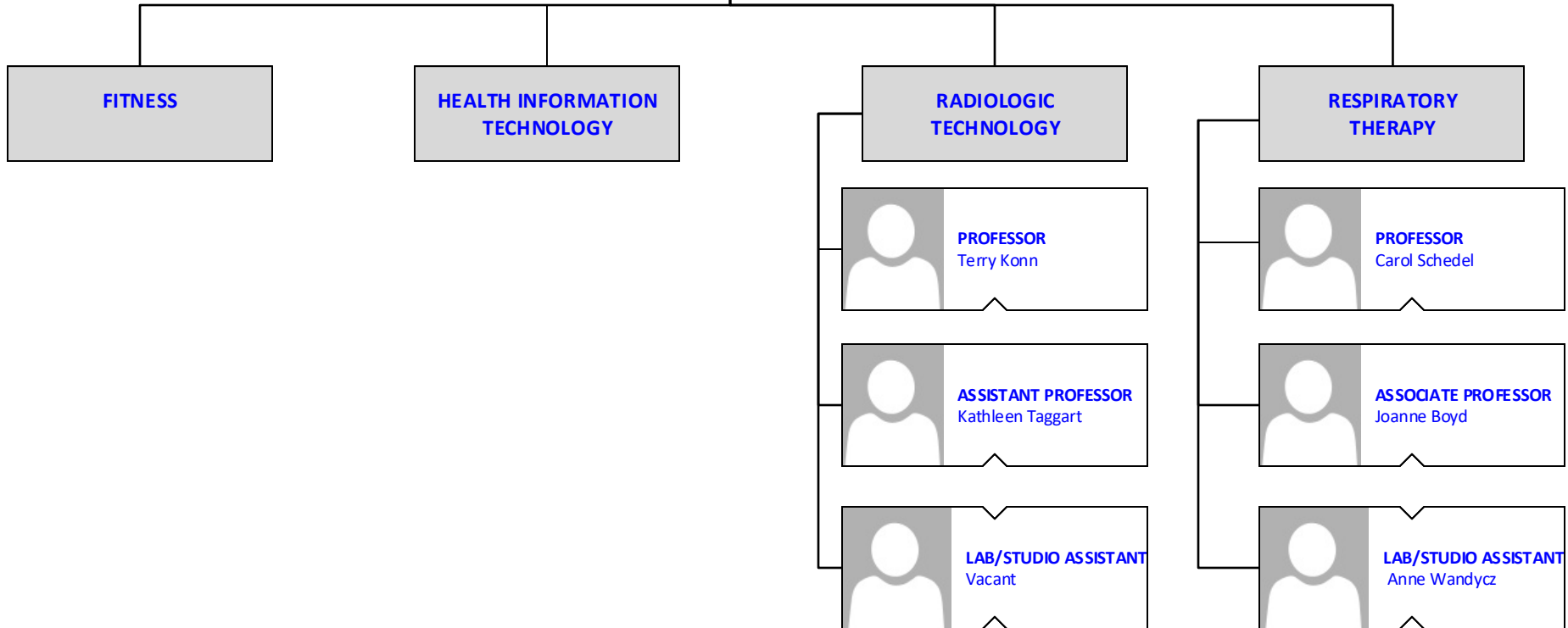
BROOKDALE COMMUNITY COLLEGE
Academic Affairs: Health Science Institute
Nursing



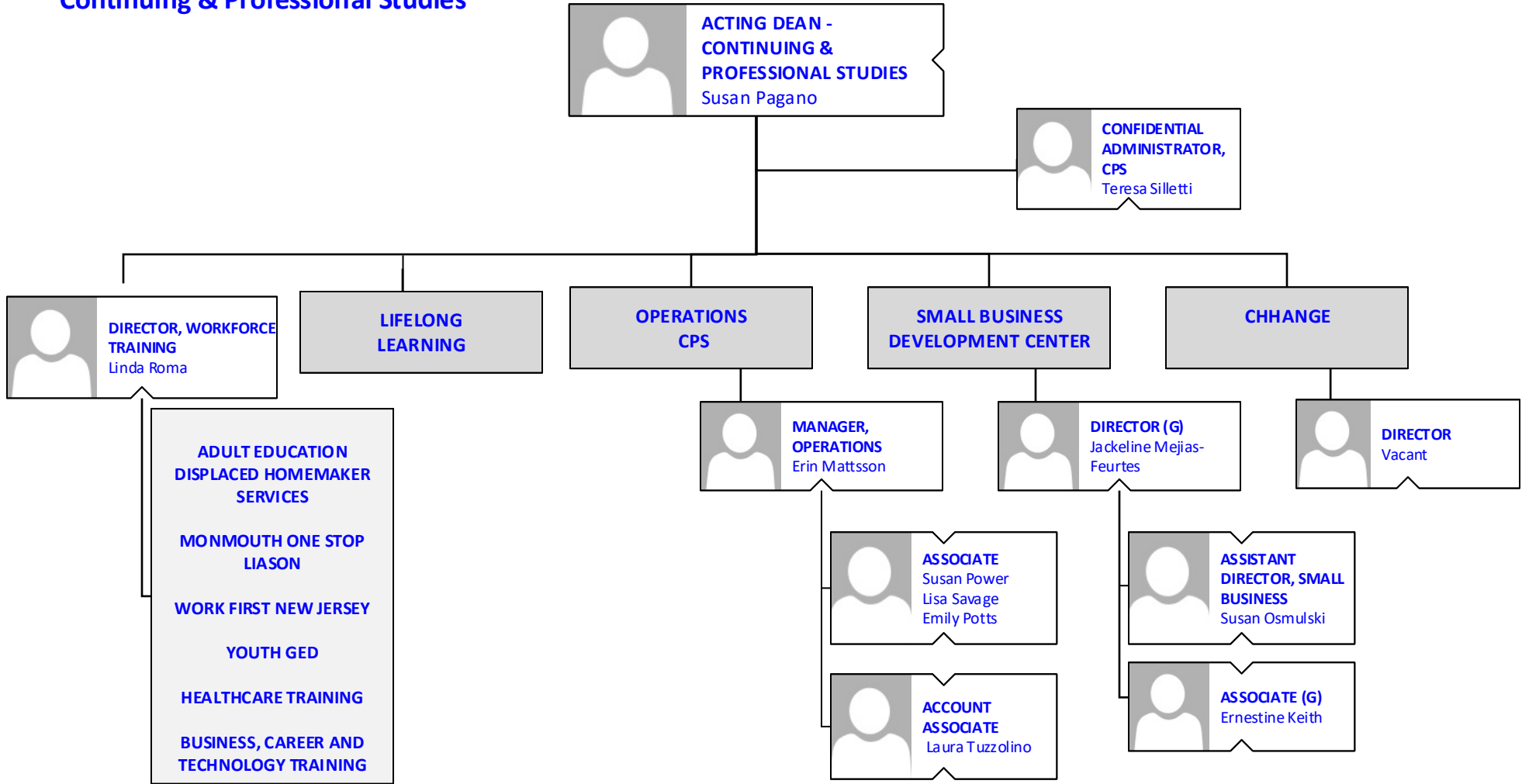
BROOKDALE COMMUNITY COLLEGE
Academic Affairs: Health Science Institute
Allied Health & Fitness



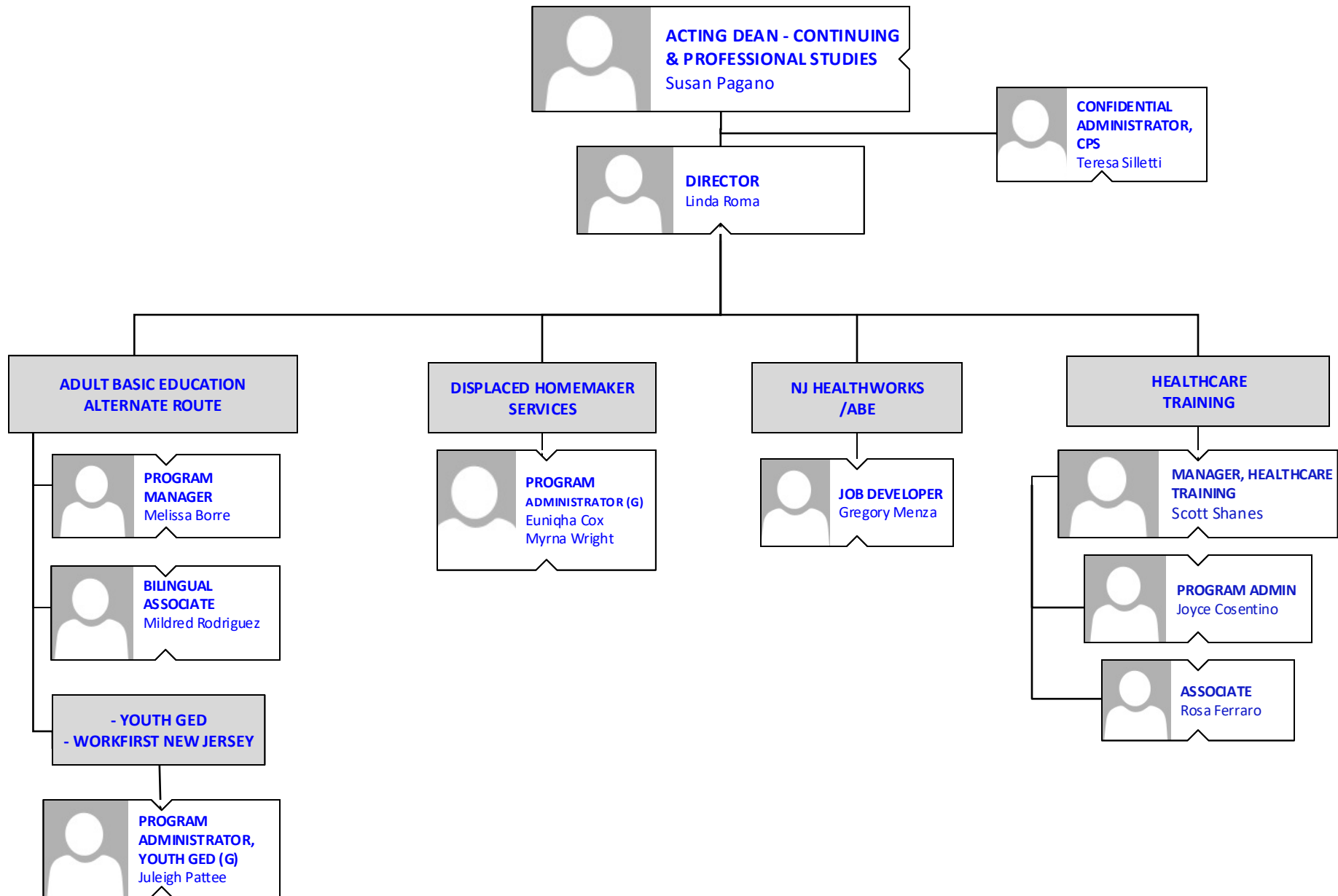
DEAN
Jayne Edman



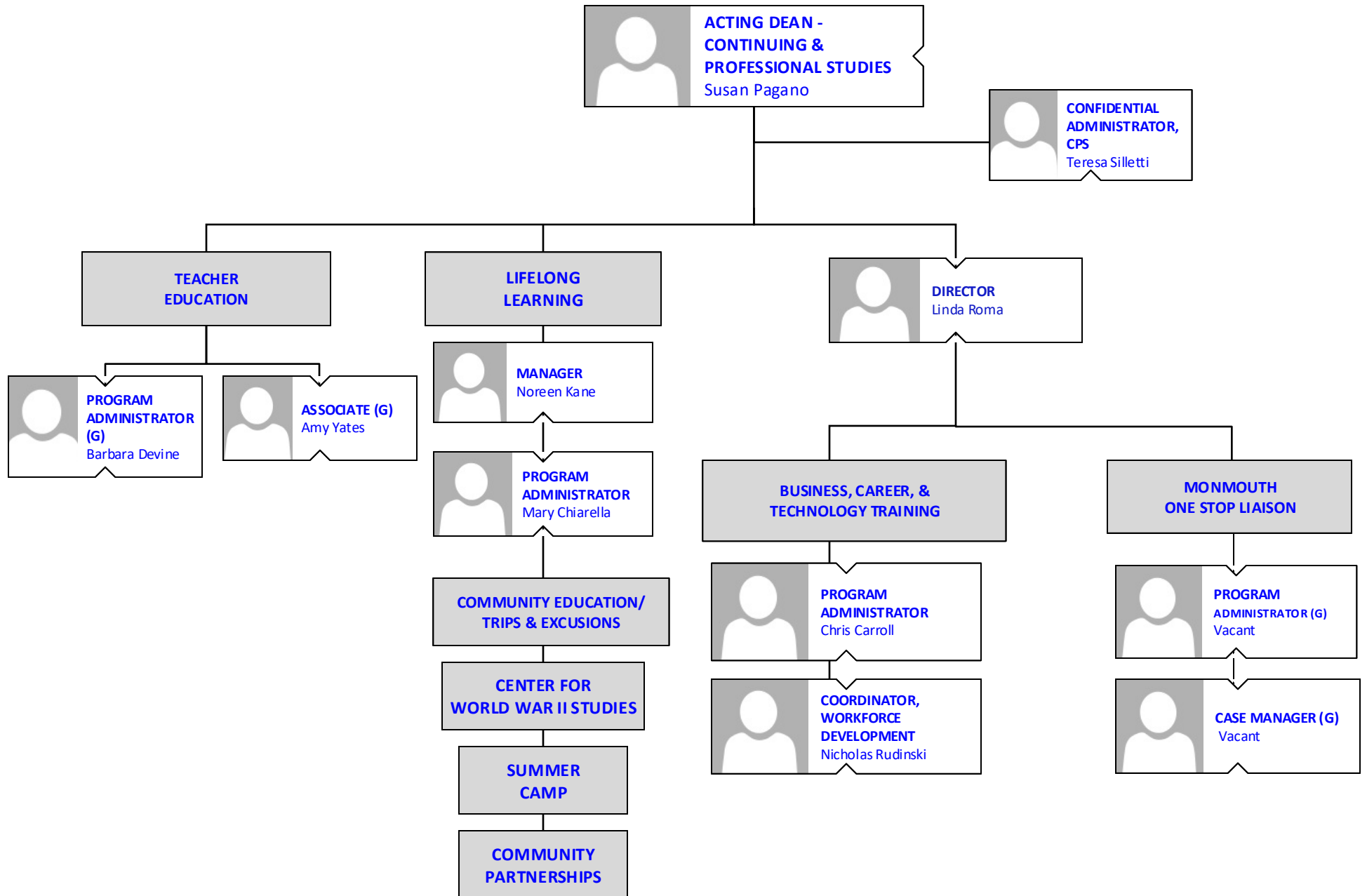
BROOKDALE COMMUNITY COLLEGE
Continuing & Professional Studies



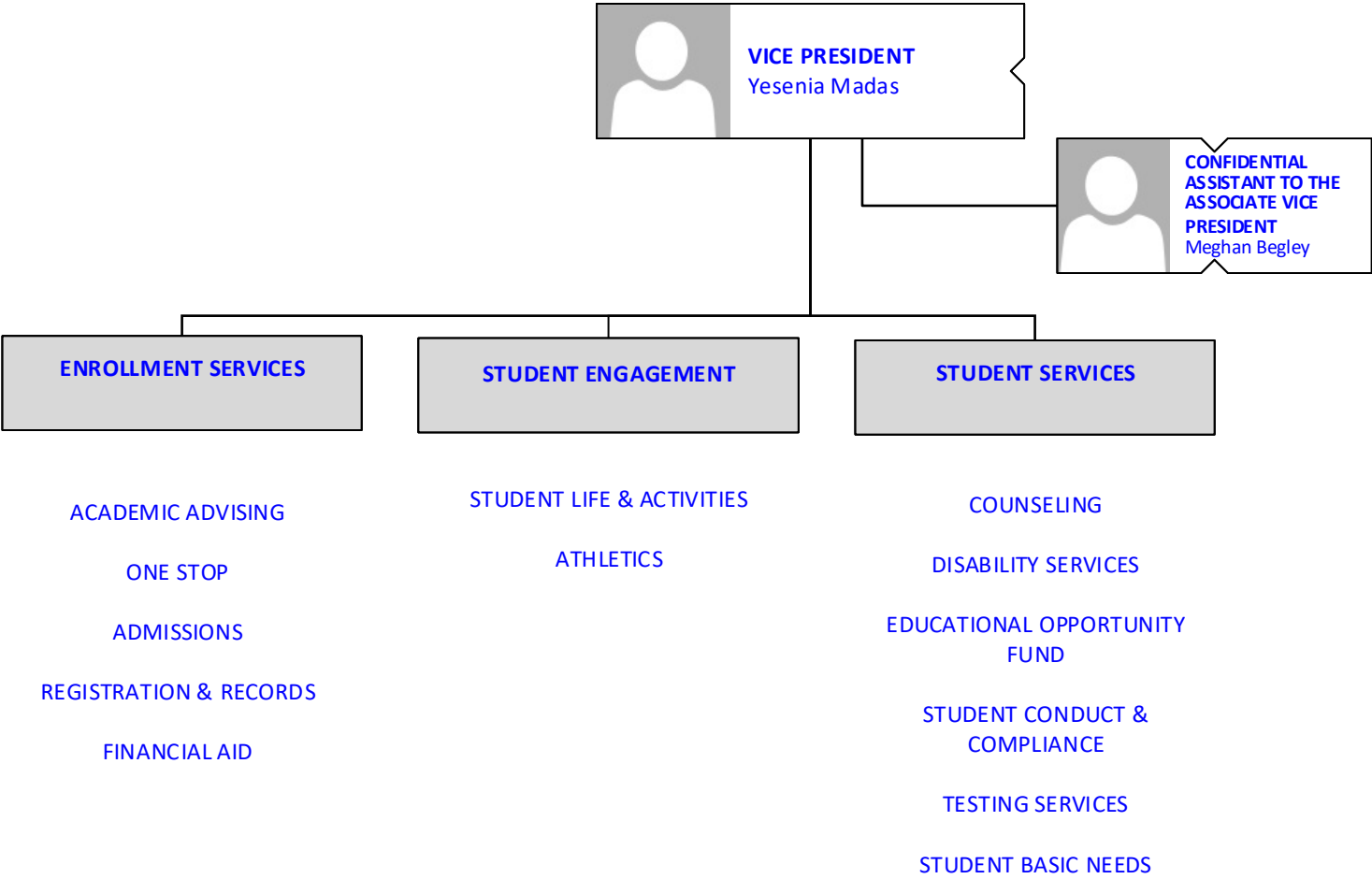
BROOKDALE COMMUNITY COLLEGE
Continuing & Professional Studies
WORKFORCE TRAINING



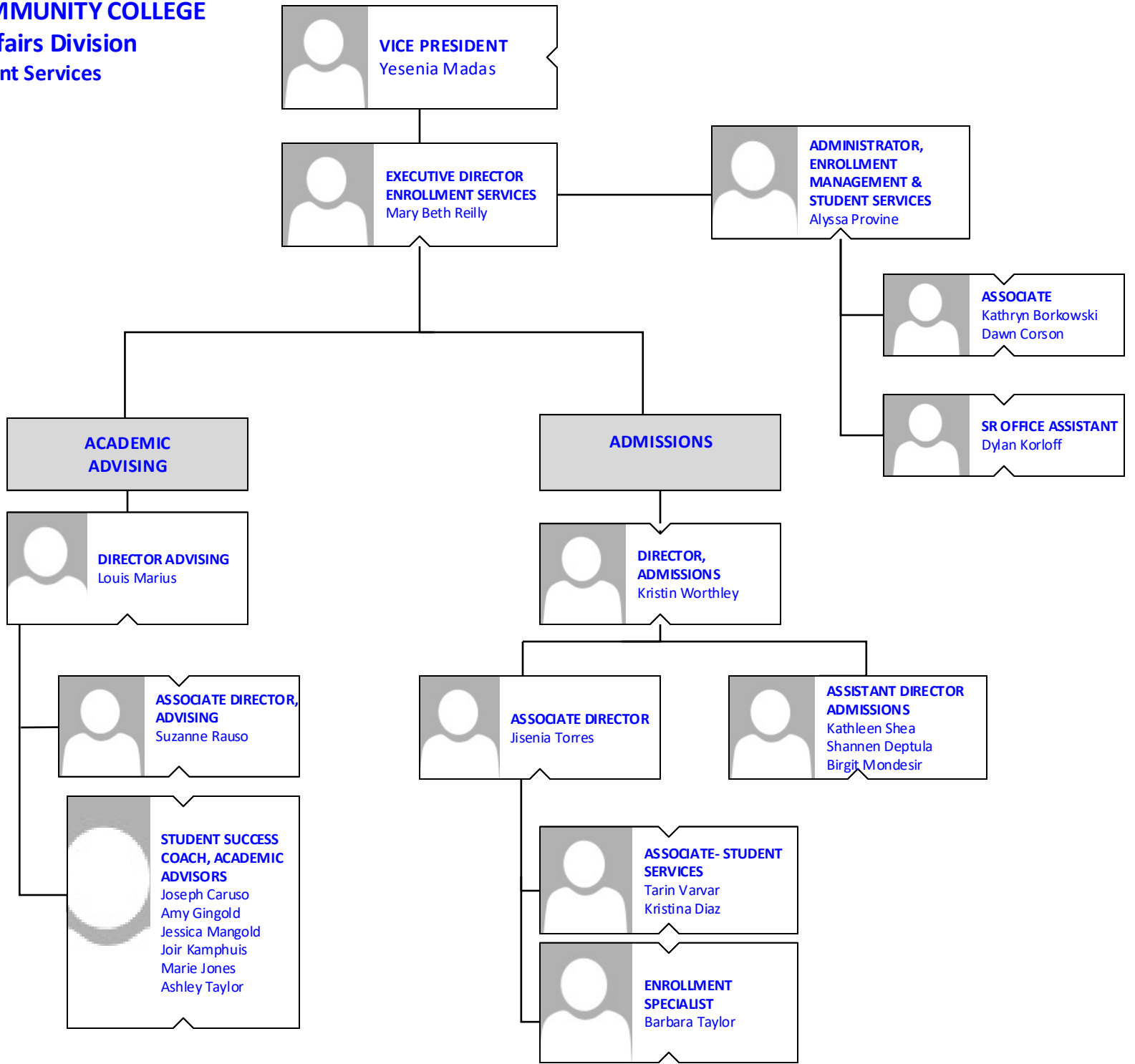
BROOKDALE COMMUNITY COLLEGE
Continuing & Professional Studies



BROOKDALE COMMUNITY COLLEGE
Student Affairs Division




BROOKDALE COMMUNITY COLLEGE
Student Affairs Division
Enrollment Services



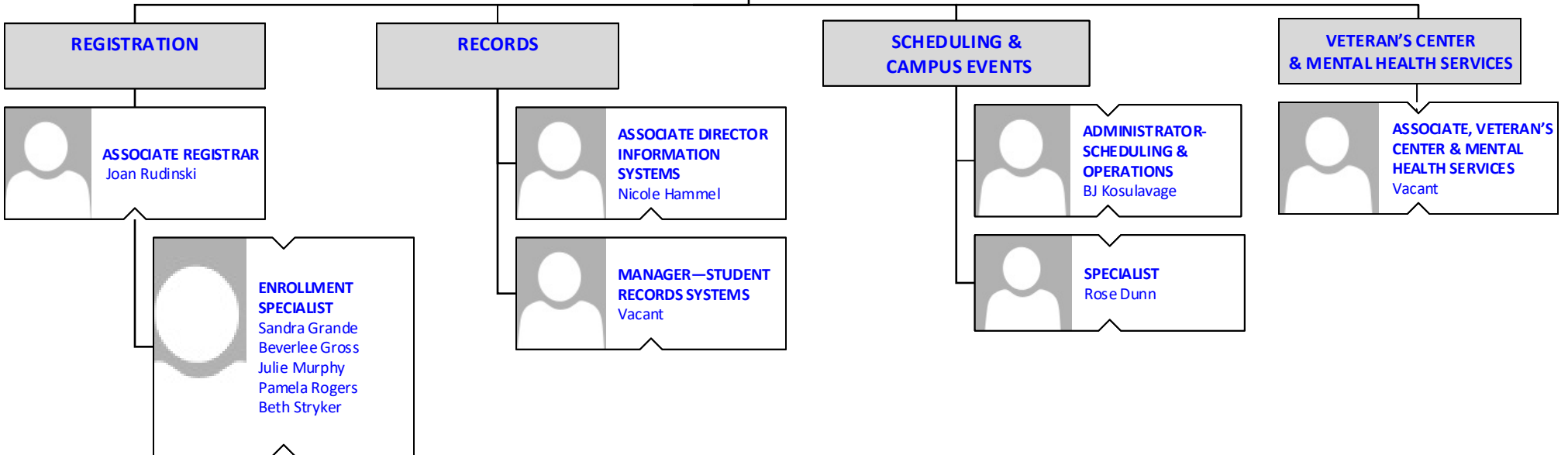
BROOKDALE COMMUNITY COLLEGE
Student Affairs Division
Enrollment Services

 **VICE PRESIDENT**
Yesenia Madas

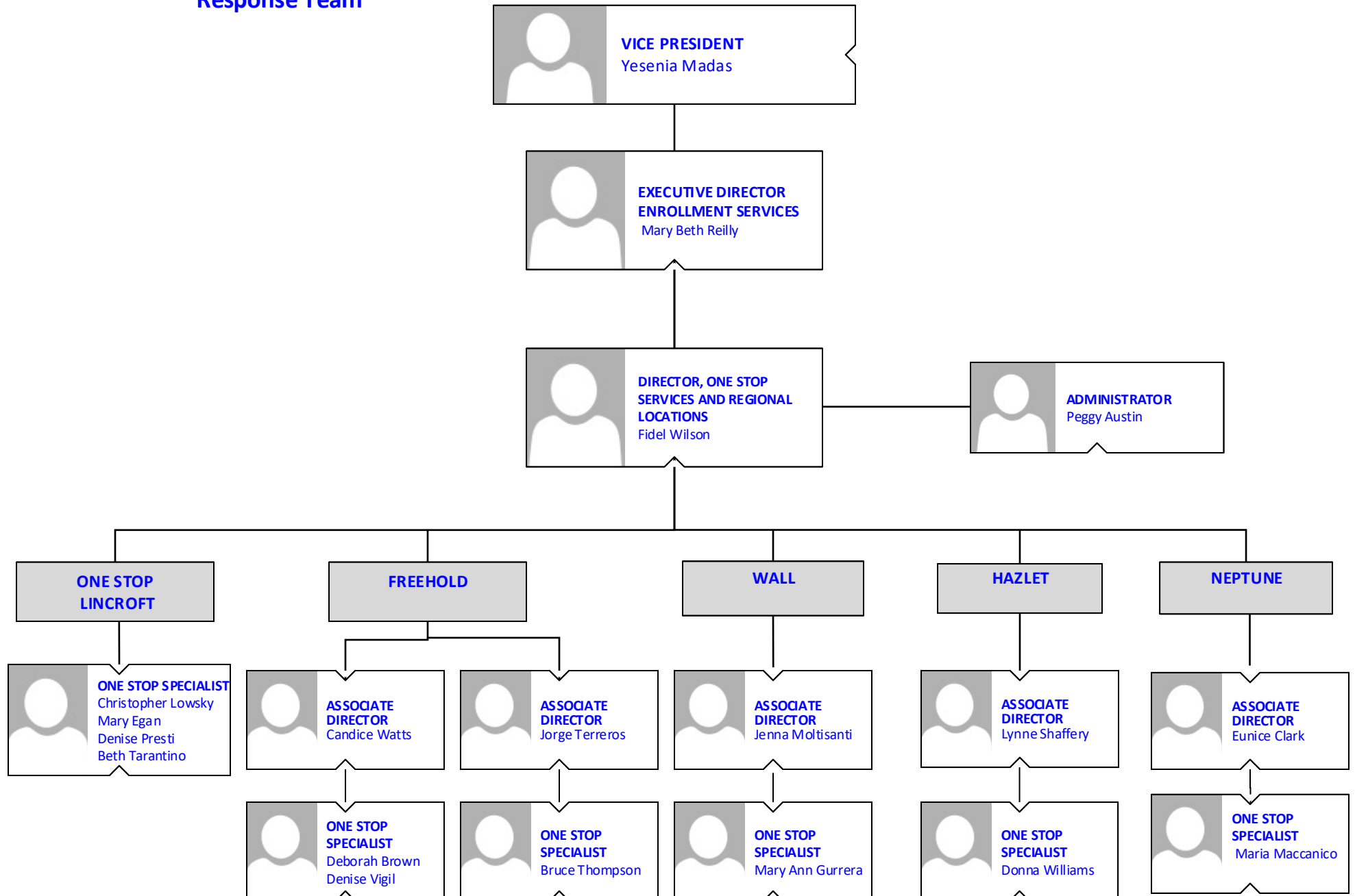
 **EXECUTIVE DIRECTOR
ENROLLMENT SERVICES**
Mary Beth Reilly

**REGISTRATION &
RECORDS**

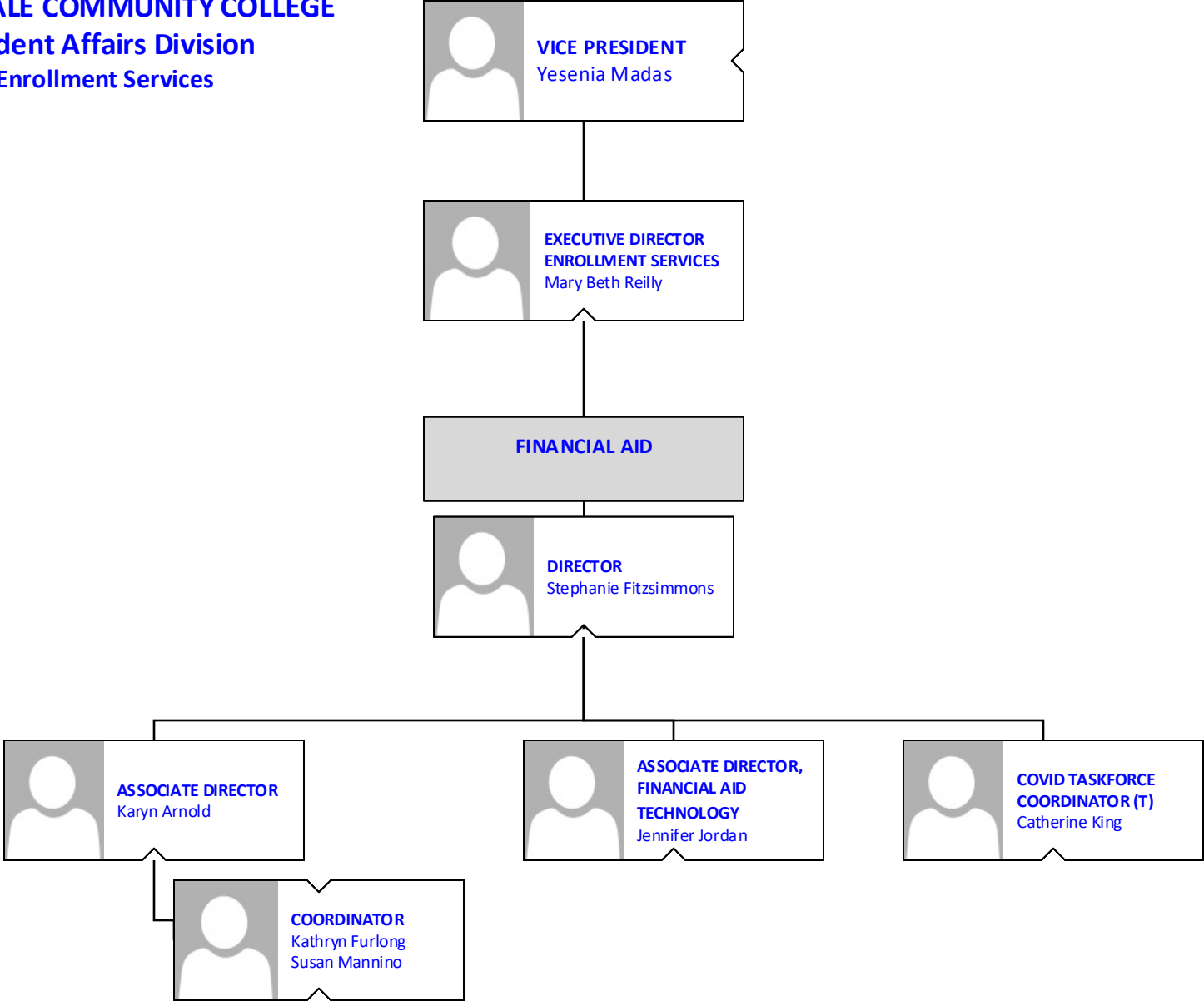
 **REGISTRAR**
Eleanor Glazewski



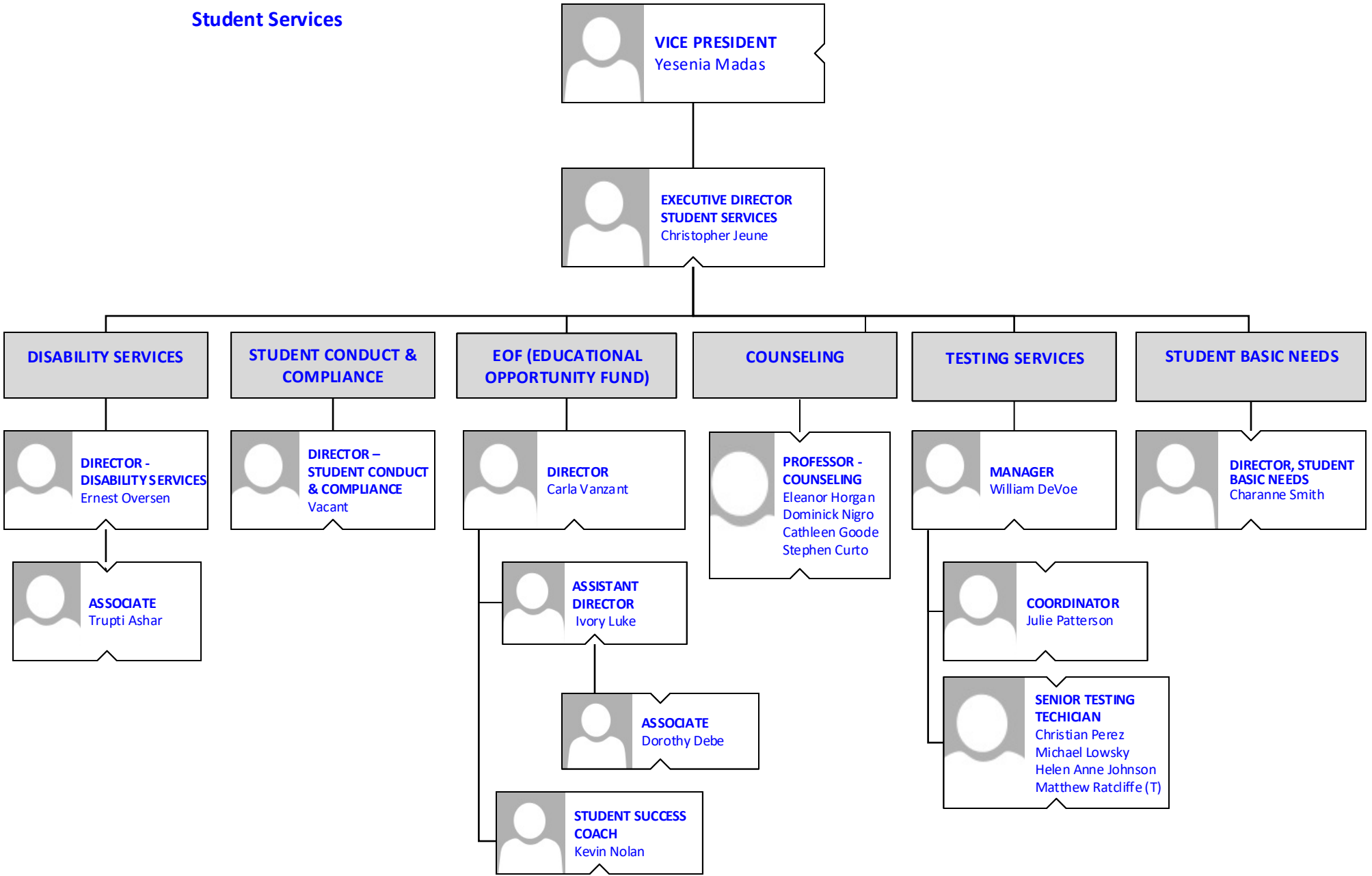
BROOKDALE COMMUNITY COLLEGE
Student Affairs Division
One Stop & Regional Locations / COVID
Response Team



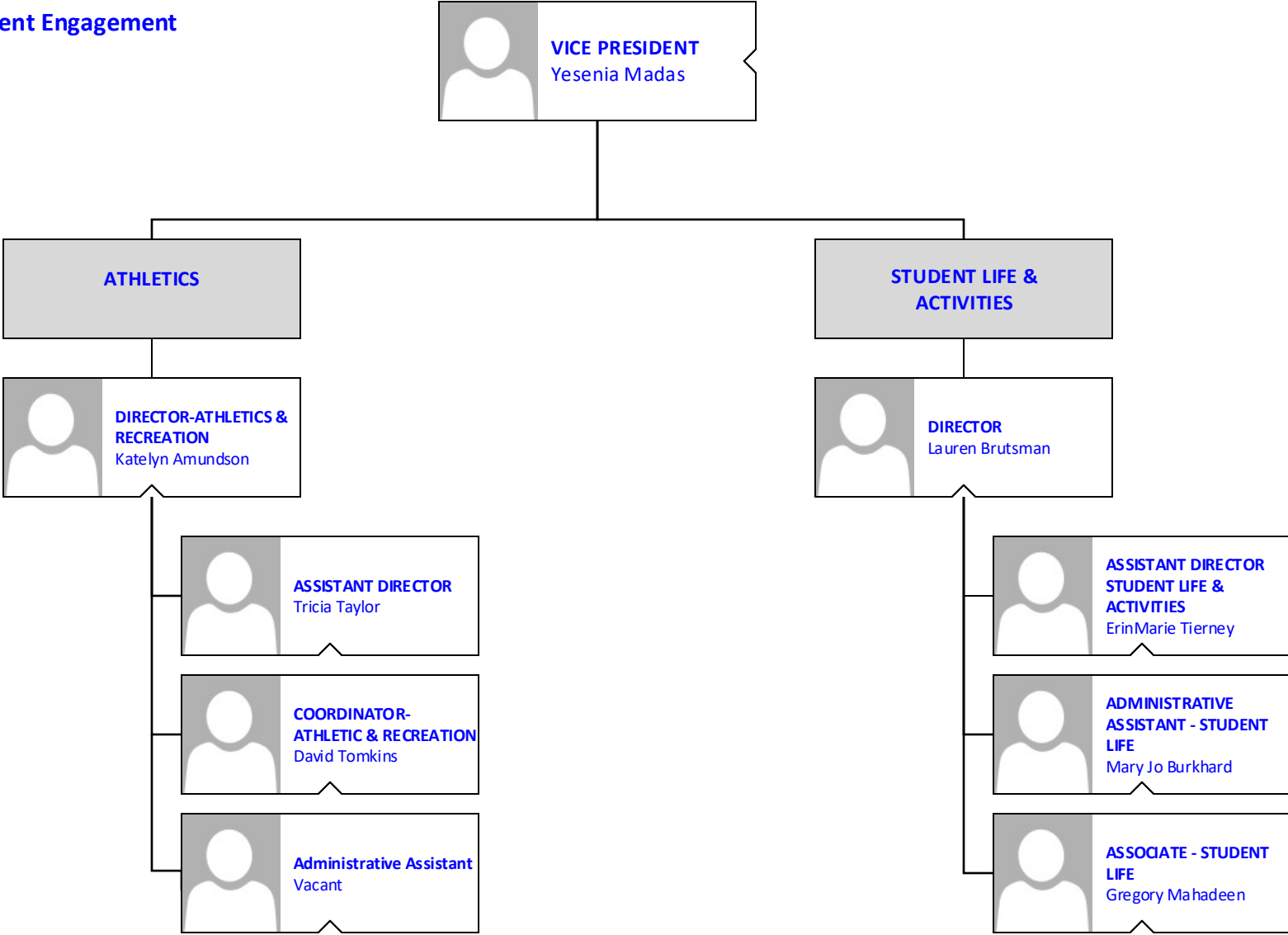
BROOKDALE COMMUNITY COLLEGE
Student Affairs Division
Enrollment Services



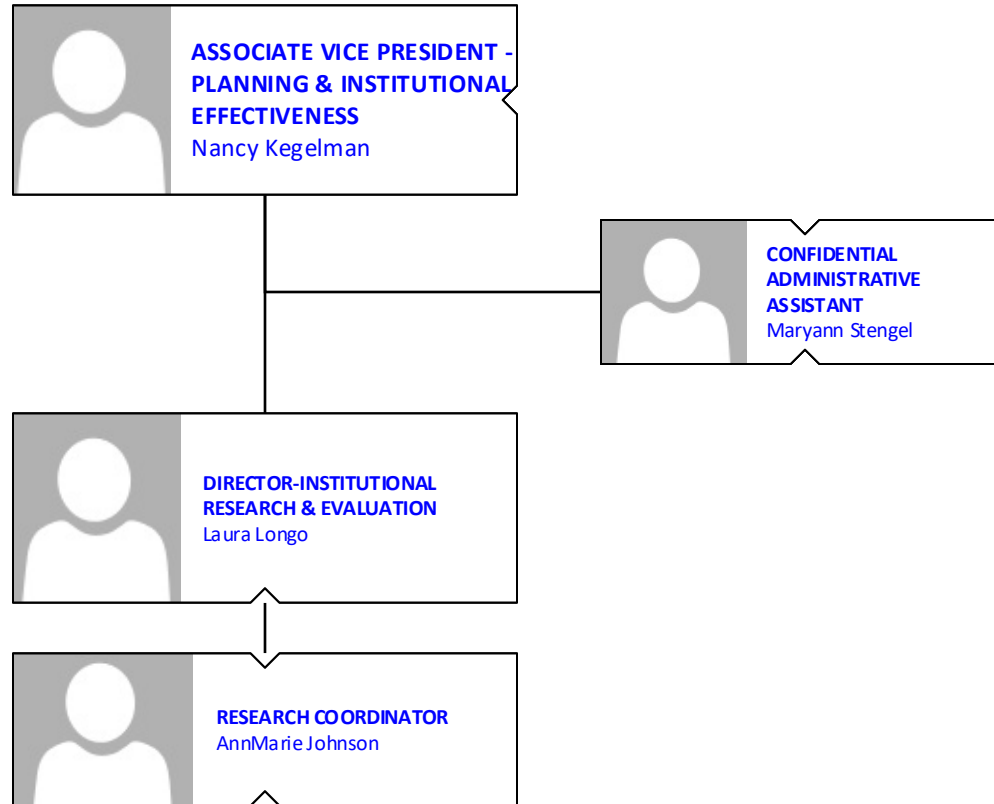
BROOKDALE COMMUNITY COLLEGE
Student Affairs Division
Student Services




BROOKDALE COMMUNITY COLLEGE
Student Affairs Division
Student Engagement



BROOKDALE COMMUNITY COLLEGE
Planning & Institutional Effectiveness



BROOKDALE COMMUNITY COLLEGE
Human Resources and Organizational Safety



**ASSOCIATE VICE
PRESIDENT-HUMAN
RESOURCES &
ORGANIZATIONAL SAFETY**
Patricia Sensi



**CONFIDENTIAL
ADMINISTRATIVE
ASSISTANT**
Kathleen Stamboni

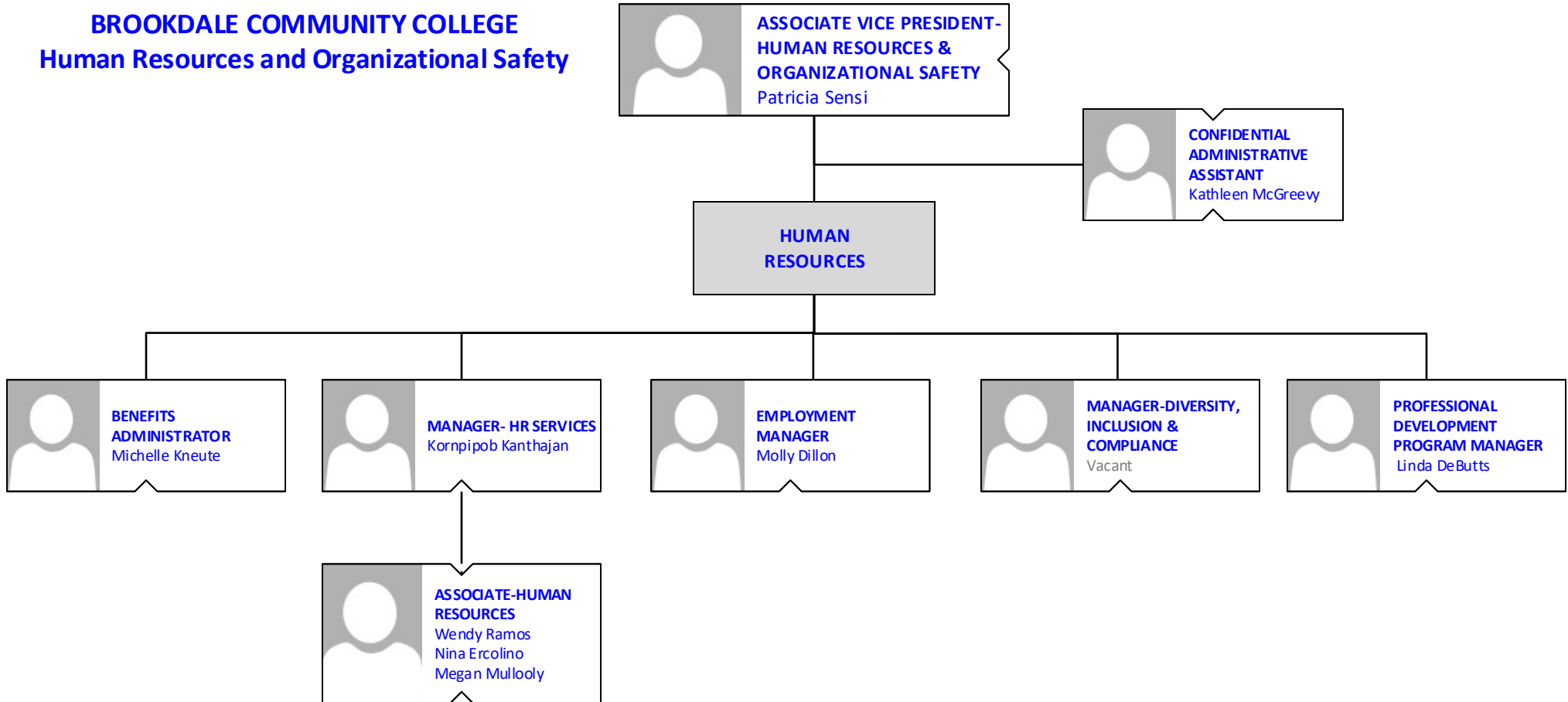
**HUMAN
RESOURCES**

**POLICE
DEPARTMENT**

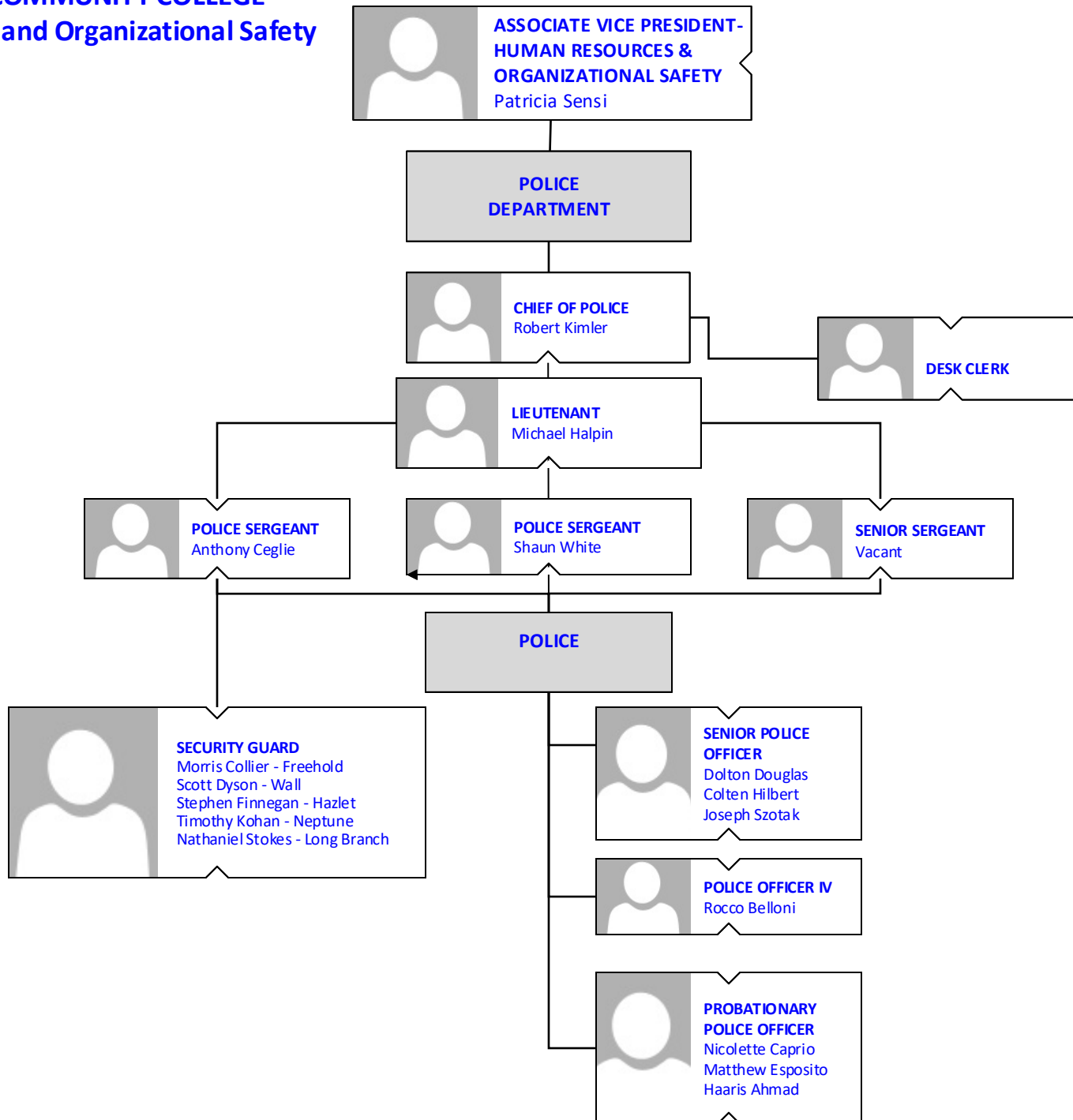
- BENEFITS
- HR SERVICES
- EMPLOYMENT
- PROFESSIONAL DEVELOPMENT
- DIVERSITY, INCLUSION & COMPLIANCE

- POLICE
- SECURITY

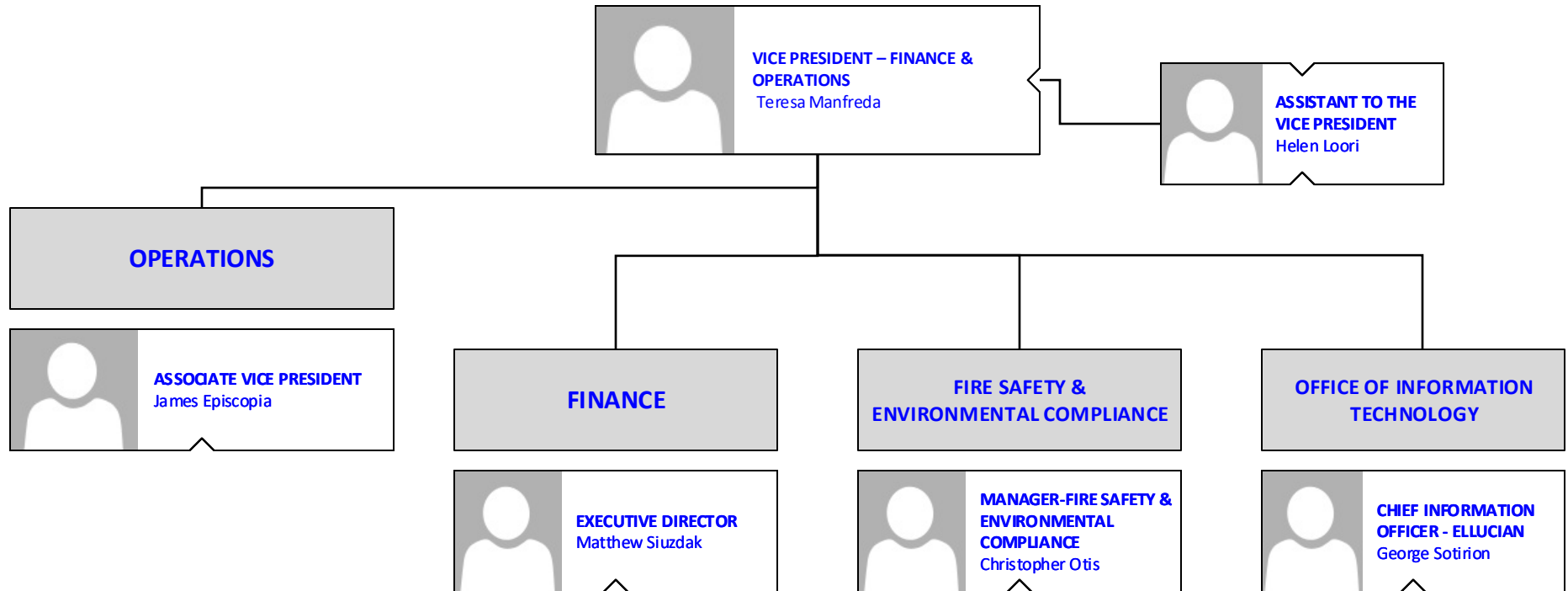
BROOKDALE COMMUNITY COLLEGE
Human Resources and Organizational Safety



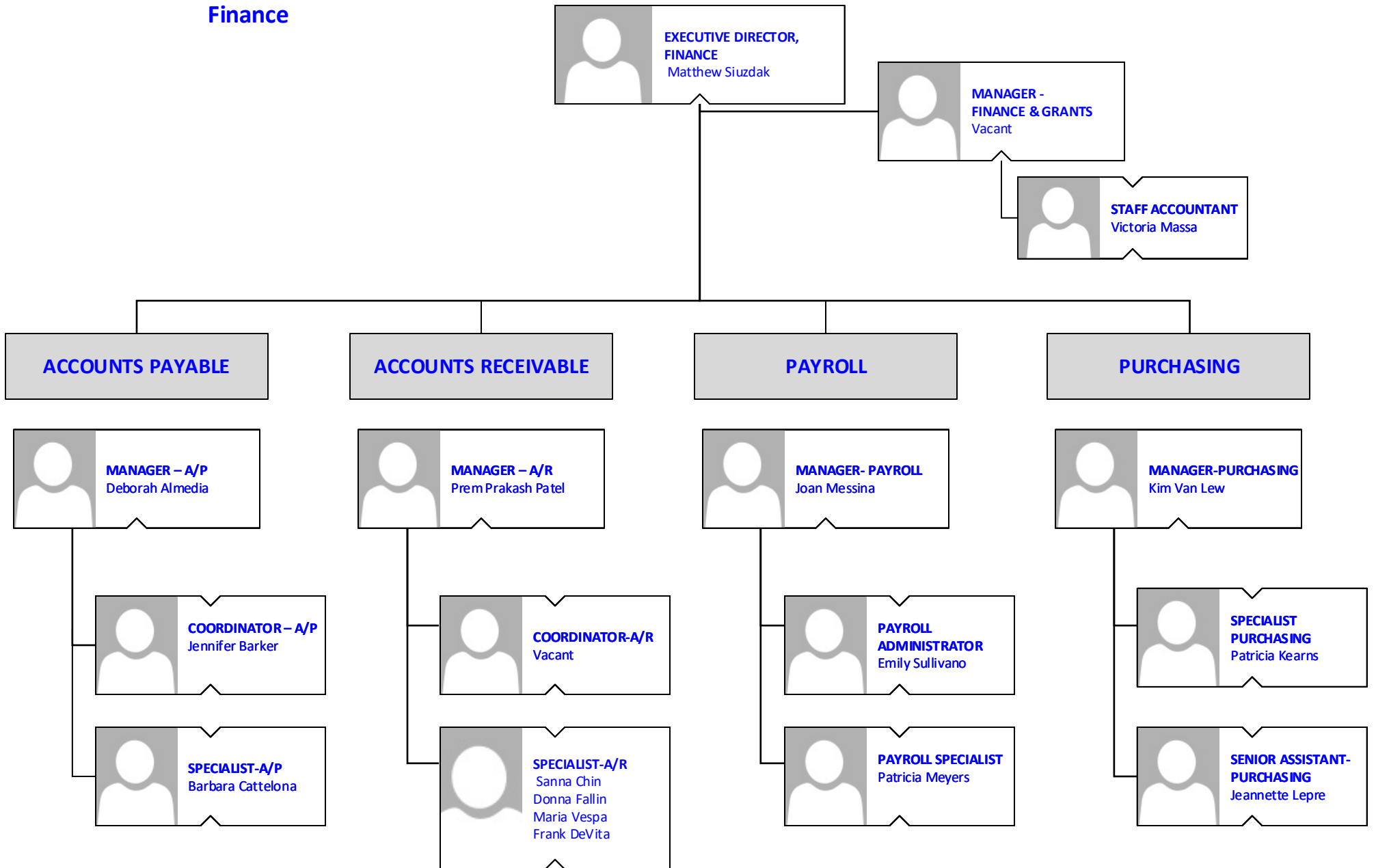
BROOKDALE COMMUNITY COLLEGE
Human Resources and Organizational Safety



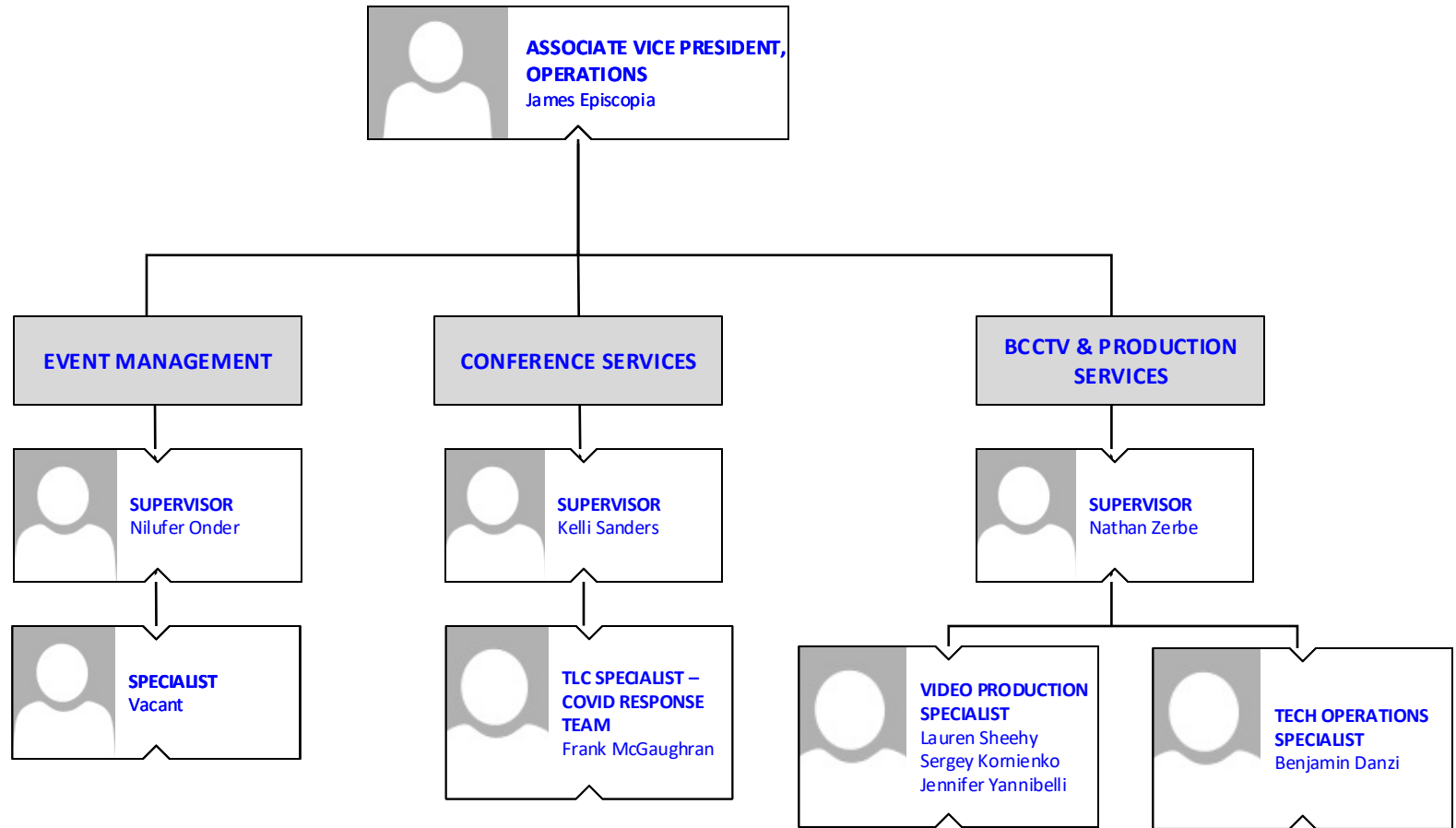
BROOKDALE COMMUNITY COLLEGE
Finance & Operations



BROOKDALE COMMUNITY COLLEGE
Finance

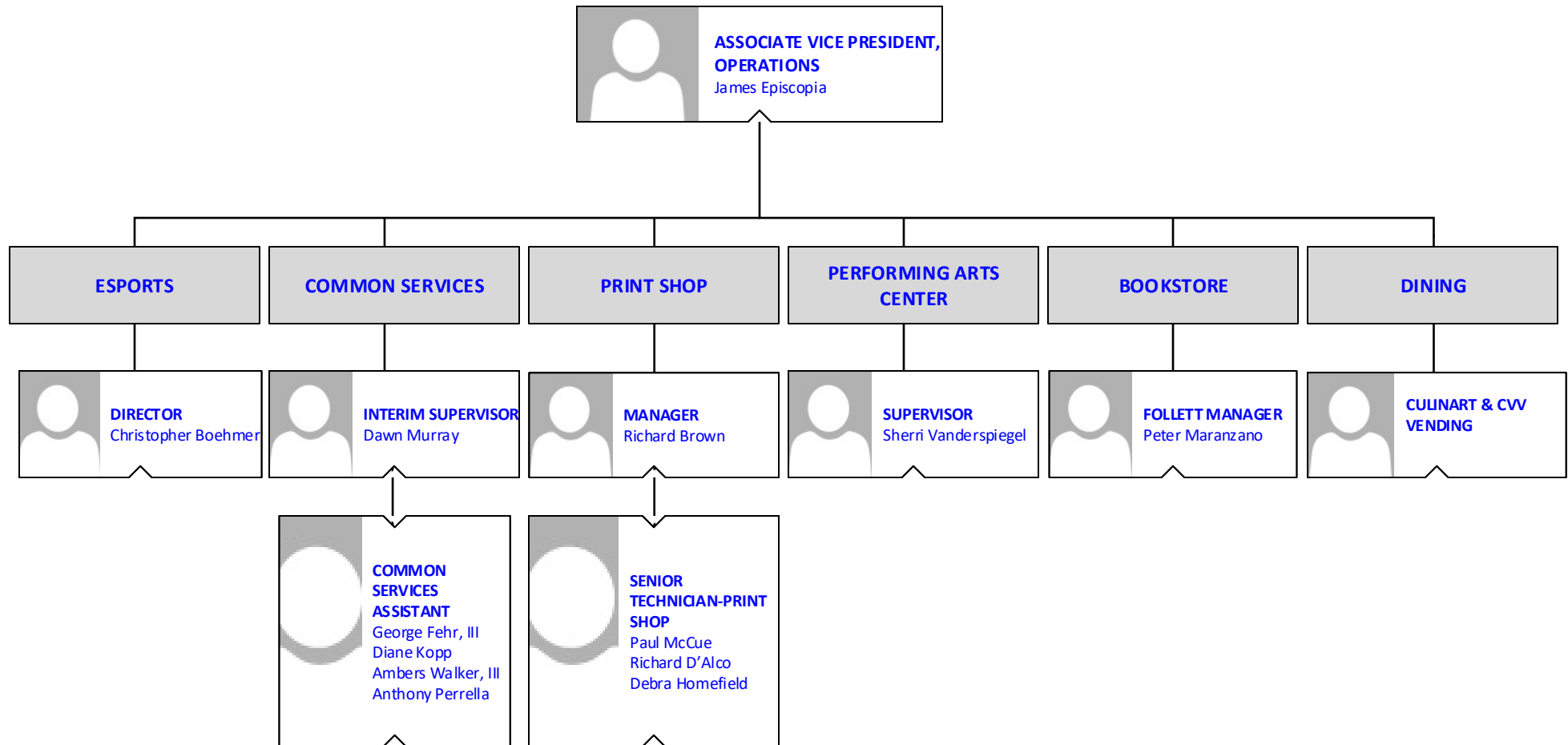


BROOKDALE COMMUNITY COLLEGE
Operations



BROOKDALE COMMUNITY COLLEGE

Operations



BROOKDALE COMMUNITY COLLEGE
Facilities

