

The following document outlines instructions for installing VMware client on your desktop or laptop computer. **NOTE: THE INSTALLATION WILL REQUIRE A RESTART OF YOUR MACHINE.** Save and close any open files or applications before beginning the installation.

## VMware Supported Browsers:

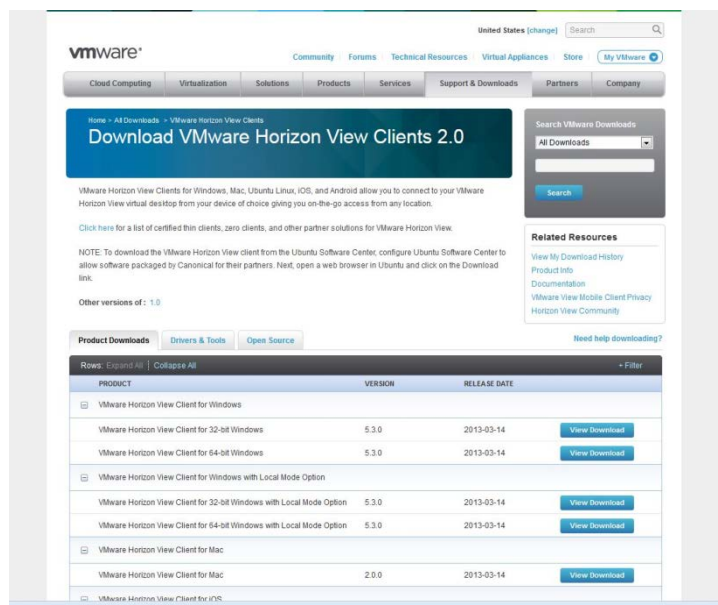
- ✓ IE 9
- ✓ Firefox 15
- ✓ Chrome 22
- ✓ Safari 5.1

## Install VMware Client:

1. To begin the installation, open a web browser and go to <https://view.brookdalecc.edu>. Click **Install VMware Horizon Client**.



2. Select the appropriate installation option based on your computer and operating system. **Note:** If you are not sure which option to choose, leave the default option selected for your machine type (i.e. Windows or Mac). Click **Go to Downloads**.



3. Click the **Download** link.

United States [change] Search

vmware® Community | Forums | Technical Resources | Virtual Appliances | Store | My VMware

Cloud Computing | Virtualization | Solutions | Products | Services | Support & Downloads | Partners | Company

Home > All Downloads > VMware Horizon View Clients > VMware Horizon View Client for...  
**Download VMware Horizon View Client for...**

Back to VMware Horizon View Clients

<b>Product</b>	VMware Horizon View Clients for Windows
<b>Version</b>	5.3.0
<b>Family</b>	VMware Horizon View Clients
<b>Description</b>	The VMware Horizon View Client for 64-bit Windows
<b>Release Date</b>	2013-03-14
<b>Type</b>	Product Binaries

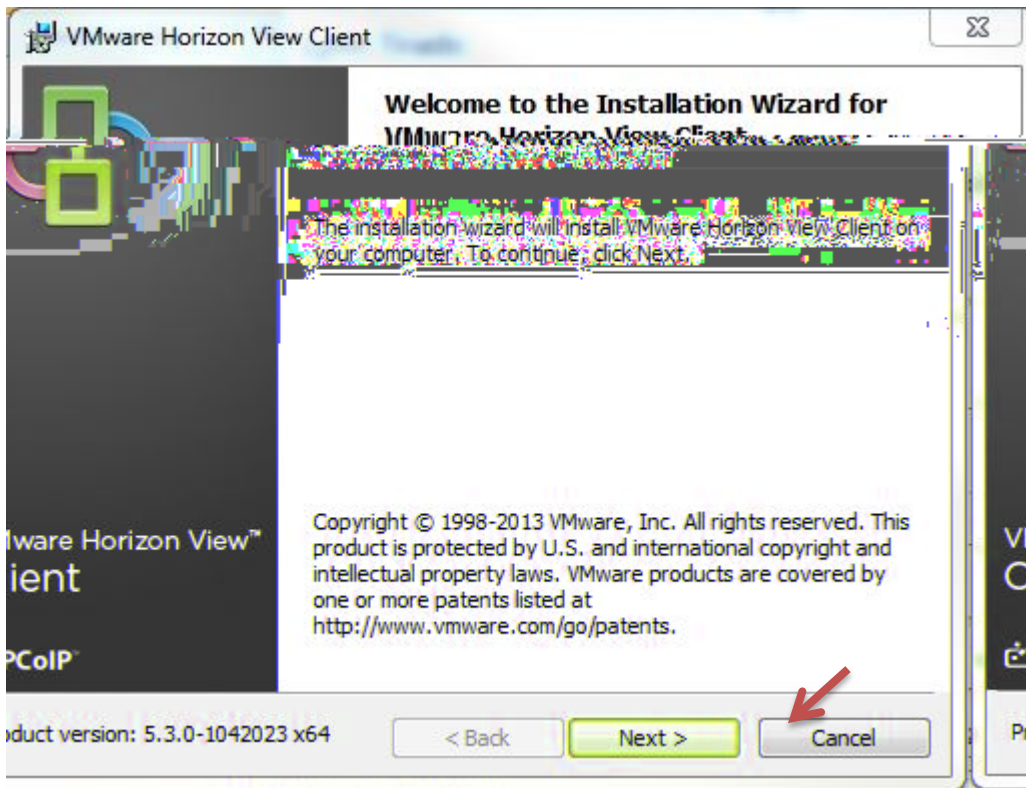
Product Downloads | Drivers & Tools | Open Source | Need help downloading?

FILE	INFORMATION
<b>VMware-viewclient-x86_64-5.3.0-1042023.exe</b> File size:39M File type: exe Release Date:2013-03-14 Build Number:1042023	<b>VMware Horizon View Client for 64-bit Windows</b> VMware Horizon View Client for 64-bit Windows MD5SUM:571a35bdf8a0f3dfd278a3503a80dd44 SHA1SUM:727a0eba3b3f88c7ed10f5445d3ae20a7110f92a

Information about MD5 checksums and SHA1 checksums.

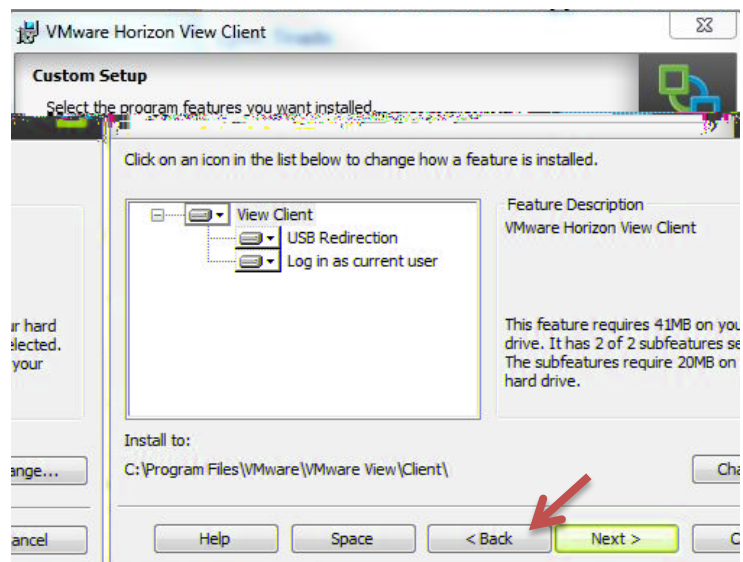
- Depending upon the browser you are using, the download will either prompt you to **Save** or **Run**. If **Run** is an option, select **Run** and follow the onscreen instructions for installing the **VMware Client**. If you are prompted to **Save**, allow the download to proceed and then access the downloaded file from the Browser download window. Click twice to launch the installation.

5. Select “**I accept the terms in the license agreement.**” Follow the onscreen instructions for installing the VMware client.

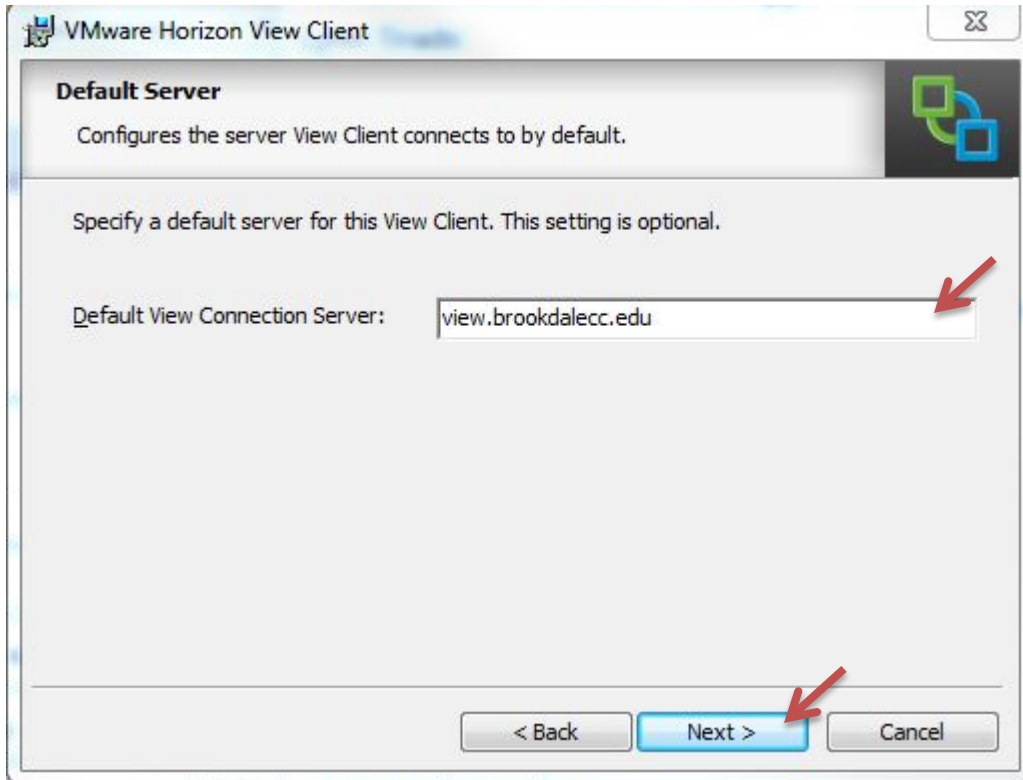


**Note:** Continue to click **Next** as prompted.

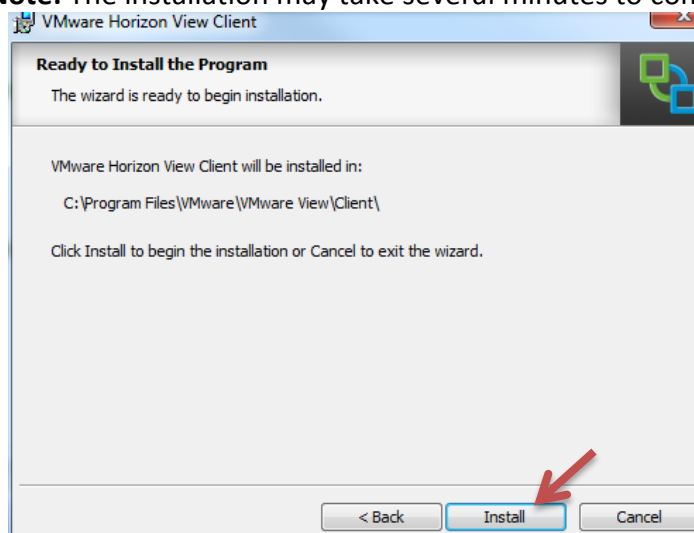
6. By default, the installation will install the application on your local hard drive within the “Programs” or “Applications” folder. Click **Next** to continue or change the default folder to install the application on another drive.



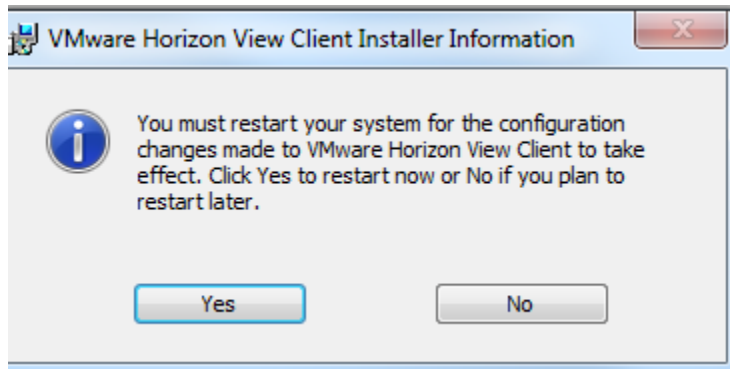
- When prompted to the “**Default Server**” screen, enter the following:  
[view.brookdalecc.edu](http://view.brookdalecc.edu) in the Default View Connection Server box and click **Next** to continue with the installation.



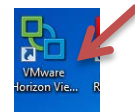
- Click **Next** on the following two screens.
- Click **Install**. **Note:** The installation may take several minutes to complete.



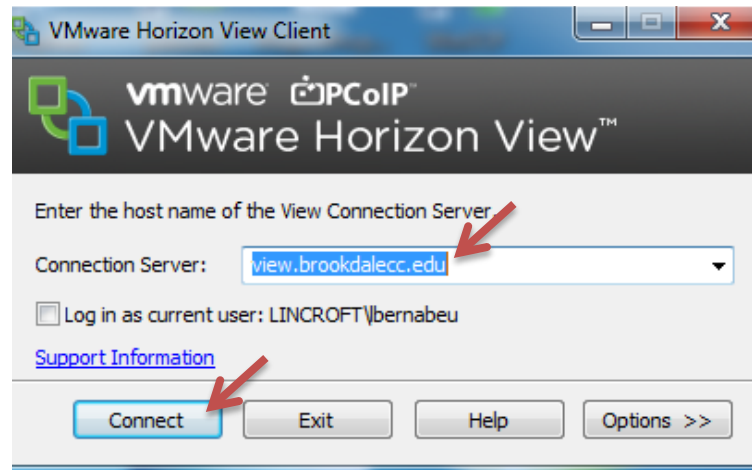
10. Click **Finish**. You will be prompted to restart your machine. Save and close any open files or applications before continuing. Click **Yes** to restart.



11. Upon restart, you will see a desktop icon, click the icon to launch the **VMware Horizon Client**.



12. Confirm the Connection Server address is **view.brookdalecc.edu** and click **Connect**.



13. Login and password: login and password for WebAdvisor and Brookdale email account
14. Domain: **"Students"** in the drop-down menu. If this does not work, use "Lincroft" as domain.
15. Click **Login**.

