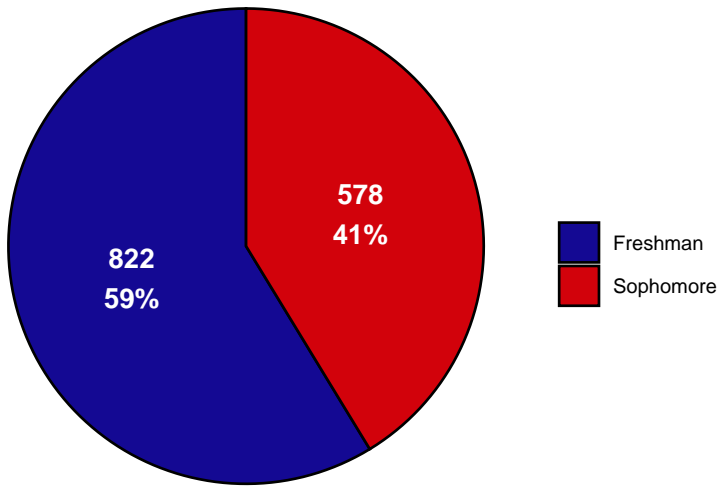




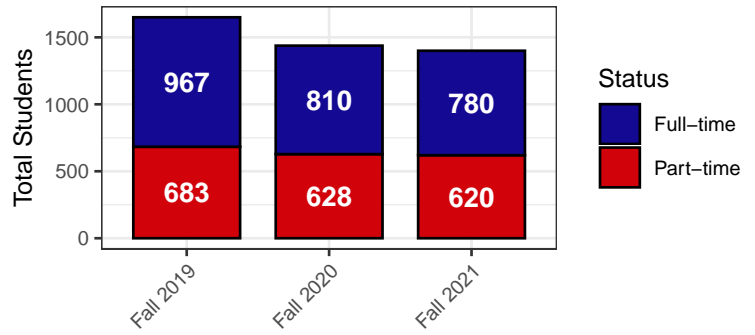
This is the Science, Technology, Engineering, and Math Institute profile. The purpose of this document is to highlight the Institute's enrollment, demographics, and student success. Graphs provide information on various aspects of the Institute from Fall 2019 through Fall 2021. All information is derived from the Student Unit Record Enrollment (SURE) file, the SURE Degrees Awarded file, and the Faculty Data Books.

Enrollment by Grade Level in Fall of 2021

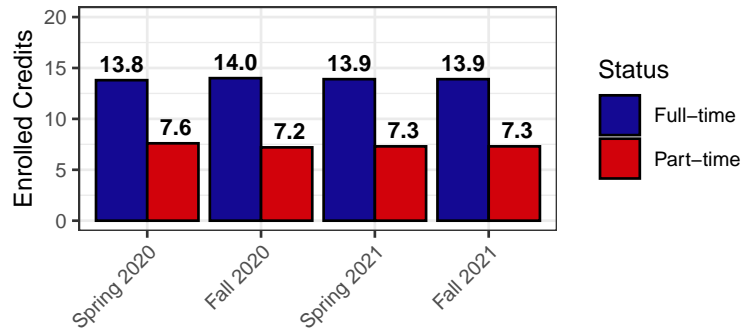


Freshman are students who have earned fewer than 30 college level credits. Sophomores have earned 30 or more.

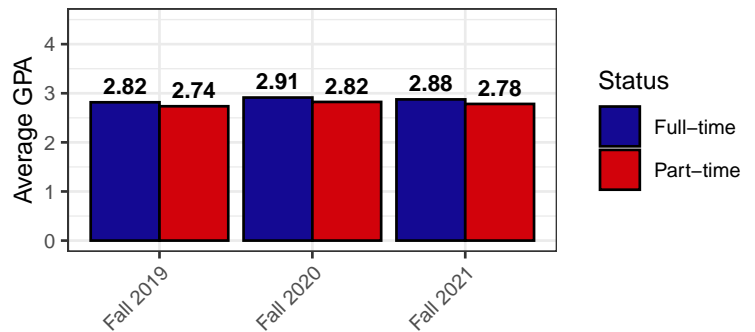
Total Students by Enrollment Status\*



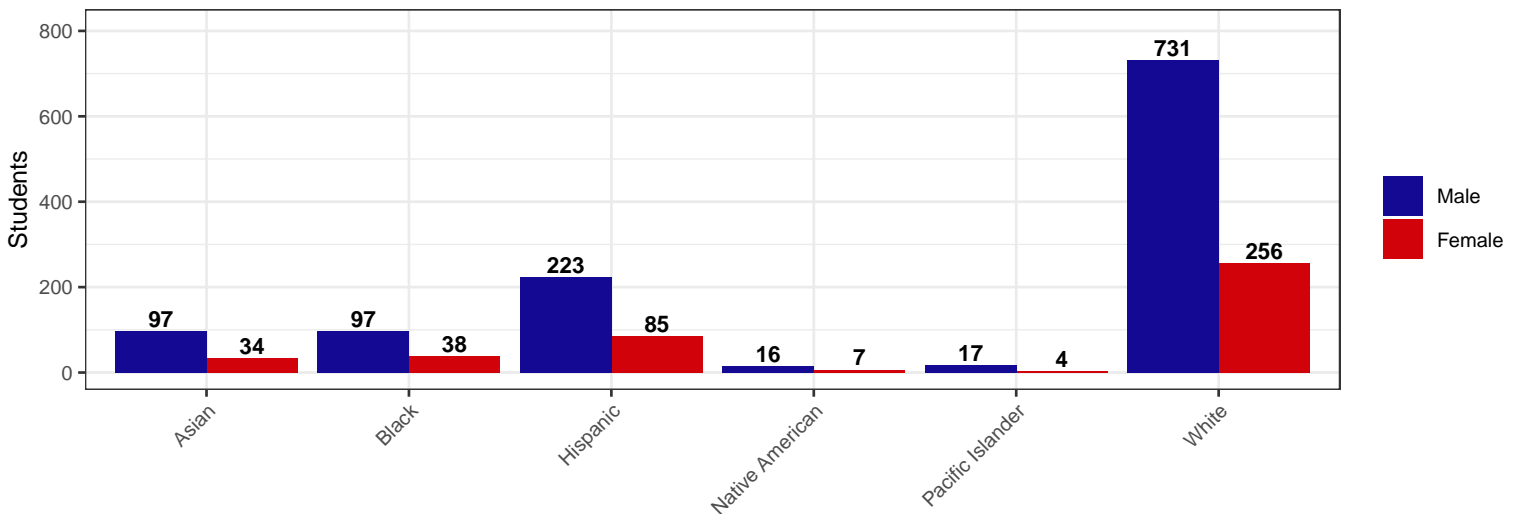
Average Enrolled Credits by Status\*



Average GPA by Status\*

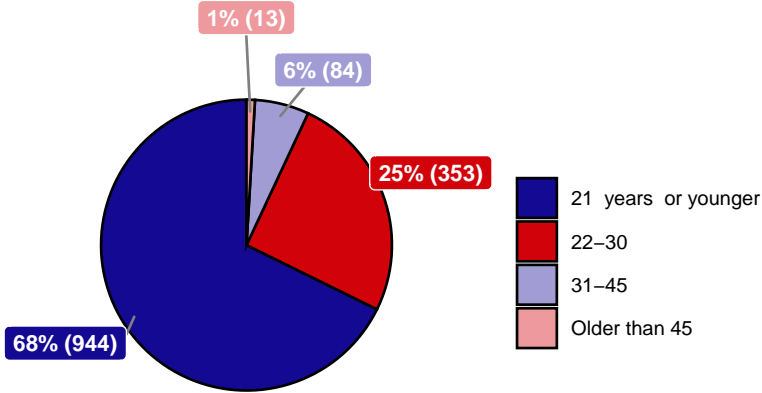


Students by Ethnicity/Gender in Fall of 2021  
(Students may be reflected in more than one ethnic category)

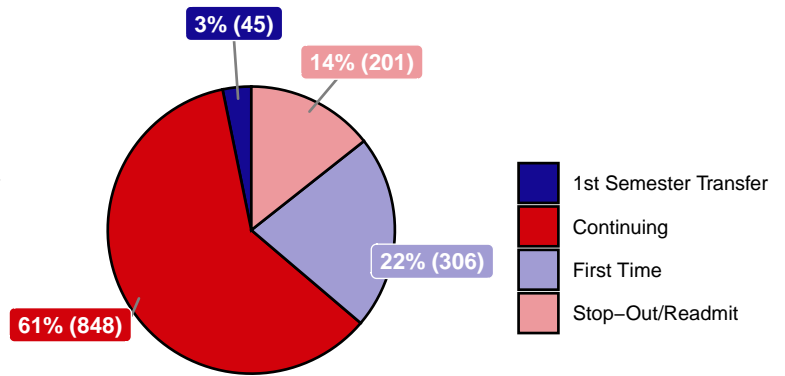


# Science, Technology, Engineering, and Math Institute Profile 2021

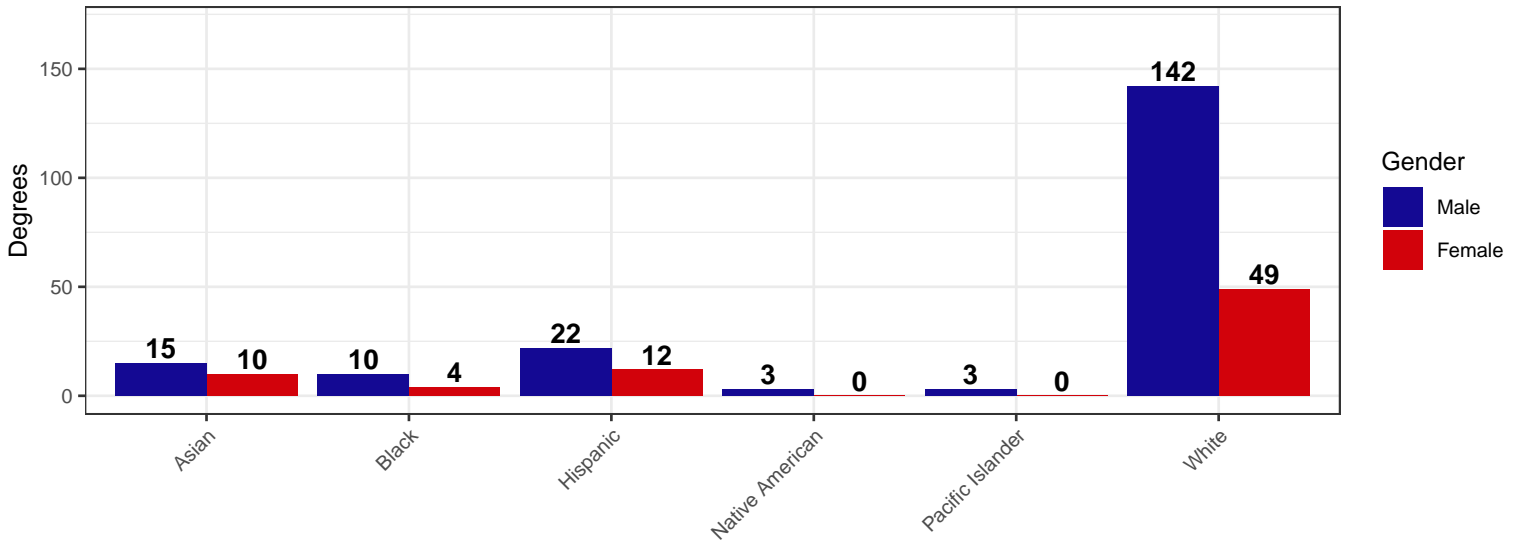
Enrollment by Age in Fall 2021



Enrollment by Registration Status in Fall 2021



Graduates of the Class of 2021 by Ethnicity/Gender (Representing 256 Total Graduates\*)



Three Year Graduation Numbers (First-Time, Full-Time Cohort)

