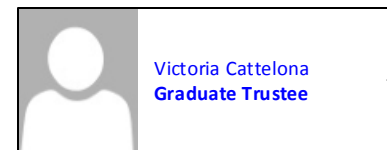
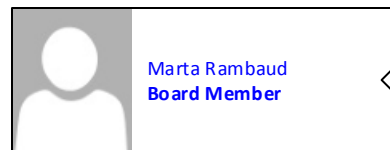
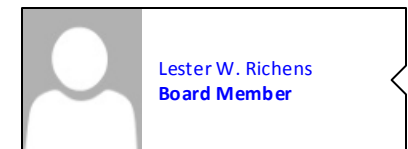
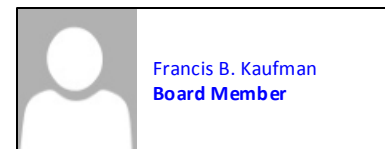
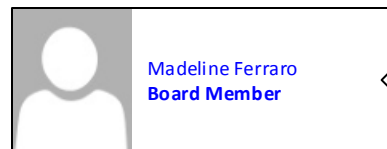
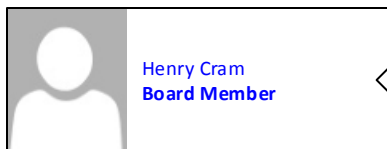
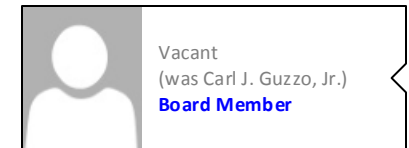
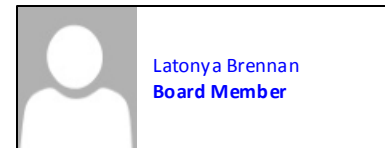
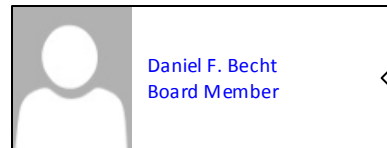
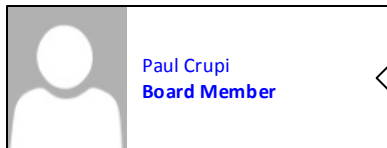
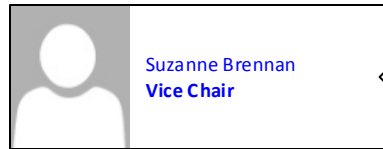
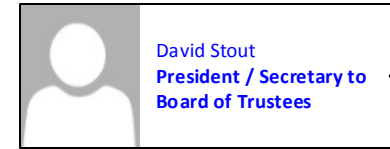


**BROOKDALE COMMUNITY COLLEGE**  
**February 15, 2019**  
**ORGANIZATIONAL CHART**  
**COVER PAGE**

PAGE	INSTITUTE / DIVISION / DEPARTMENT
2	Board of Trustees
3-4	Office of the President
5	College Relations
6	Learning
7-10	Educational Access & Innovation
11-15	STEM Institute
16-20	Humanities Institute
21-25	Institute for Business & Social Sciences
26-28	Health Science Institute
29-30	Continuing & Professional Studies
31-36	Student Affairs Division
37	Planning & Institutional Effectiveness
38	Strategic Partnerships
39-41	Human Resources & Organizational Safety
42	Auxiliary Services
43-45	Finance & Operations

# BROOKDALE COMMUNITY COLLEGE


## Board of Trustees



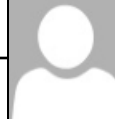
**BROOKDALE COMMUNITY COLLEGE**  
**Office of the President**



**David Stout**  
**President**




**Cynthia Gruskos**  
**Senior Assistant to the President & BOT**




**Confidential Secretary**  
**Vacant**



**Bonnie Passarella**  
**Executive Associate - Legal Services**



**Joey Stoner**  
**Interim Vice President – Finance & Operations (T)**



**Yesenia Madas**  
**Associate Vice President - Student Affairs**



**Ann Marie Sparaco**  
**Director – Special Projects**



**Nancy Kegelman**  
**Associate Vice President- Planning & Institutional Effectiveness**




**Anita Voogt**  
**Associate Vice President – Strategic Partnerships**



**Matthew Reed**  
**Vice President for Learning**




**Edward Johnson**  
**Executive Director – Governmental & Community Relations**



**Joan Scocco**  
**Dean--Continuing & Professional Studies**



**Patricia Sensi**  
**Associate Vice President- Human Resources & Organizational Safety**



**Laura Qaissaunee**  
**Director – Grants & Institutional Development**



**Timothy Zeiss**  
**Executive Director – Foundation & Alumni Affairs**




**Kathleen Kamatani**  
**Interim Executive Director College Relations**

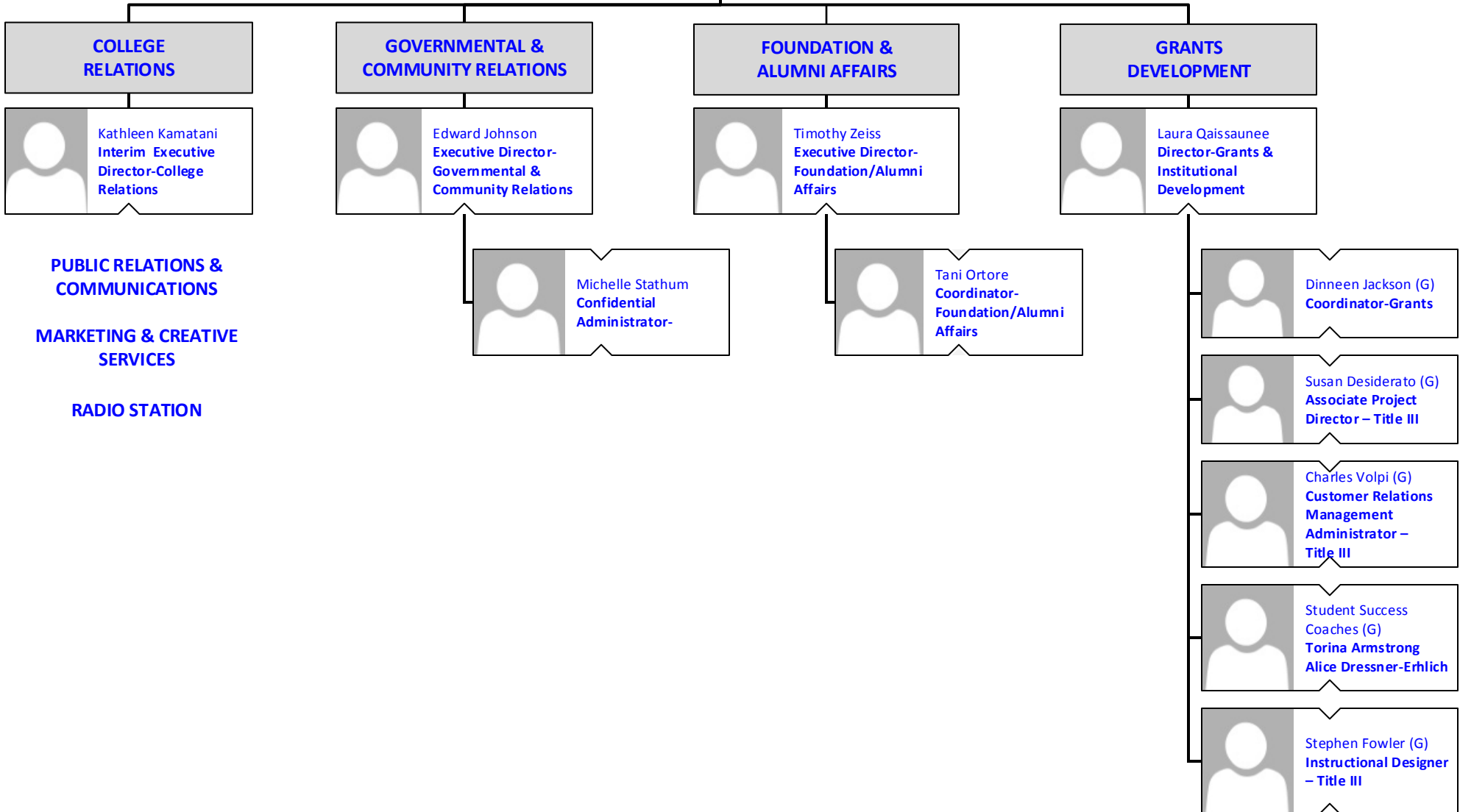


**James Episcopia**  
**Executive Director - Operations**

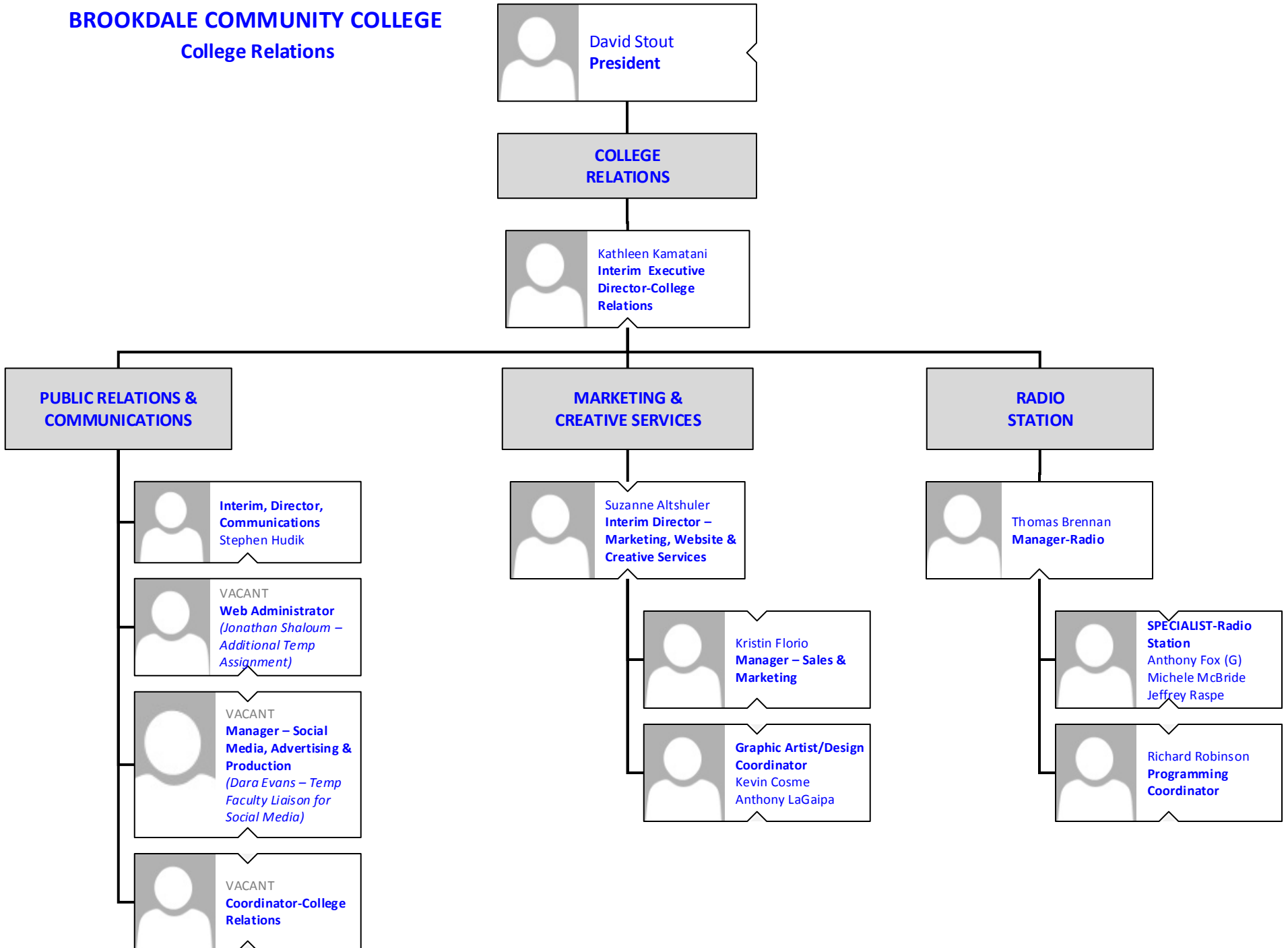
**BROOKDALE COMMUNITY COLLEGE**  
**College Relations, Grants and Foundation,**  
**Governmental & Community Relations**



**David Stout**  
**President**



**BROOKDALE COMMUNITY COLLEGE**  
College Relations




**BROOKDALE COMMUNITY COLLEGE**  
Learning




**Matthew Reed**  
**VICE PRESIDENT FOR LEARNING**



**Hilda Dudick**  
**ADMINISTRATOR TO VP FOR LEARNING**



**Patricia Henn**  
**CONFIDENTIAL ASSISTANT TO VP FOR LEARNING**



**William Burns**  
**ASSOCIATE VICE PRESIDENT – EDUCATIONAL ACCESS & INNOVATION**

**LEARNING**

**INNOVATION & LEARNING RESOURCES INSTITUTE**

**EARLY COLLEGE HIGH SCHOOL**


**EDUCATIONAL PARTNERSHIPS**

**TRANSFER & ARTICULATION**

**CAREER DEVELOPMENT**

**INTERNATIONAL CENTER**


**REGIONAL LOCATIONS**



**Anoop Ahluwalia**  
**DEAN-STEM INSTITUTE**



**Jayne Edman**  
**DEAN-HEALTH SCIENCE INSTITUTE**




**Margaret Natter**  
**INTERIM DEAN-HUMANITIES INSTITUTE**



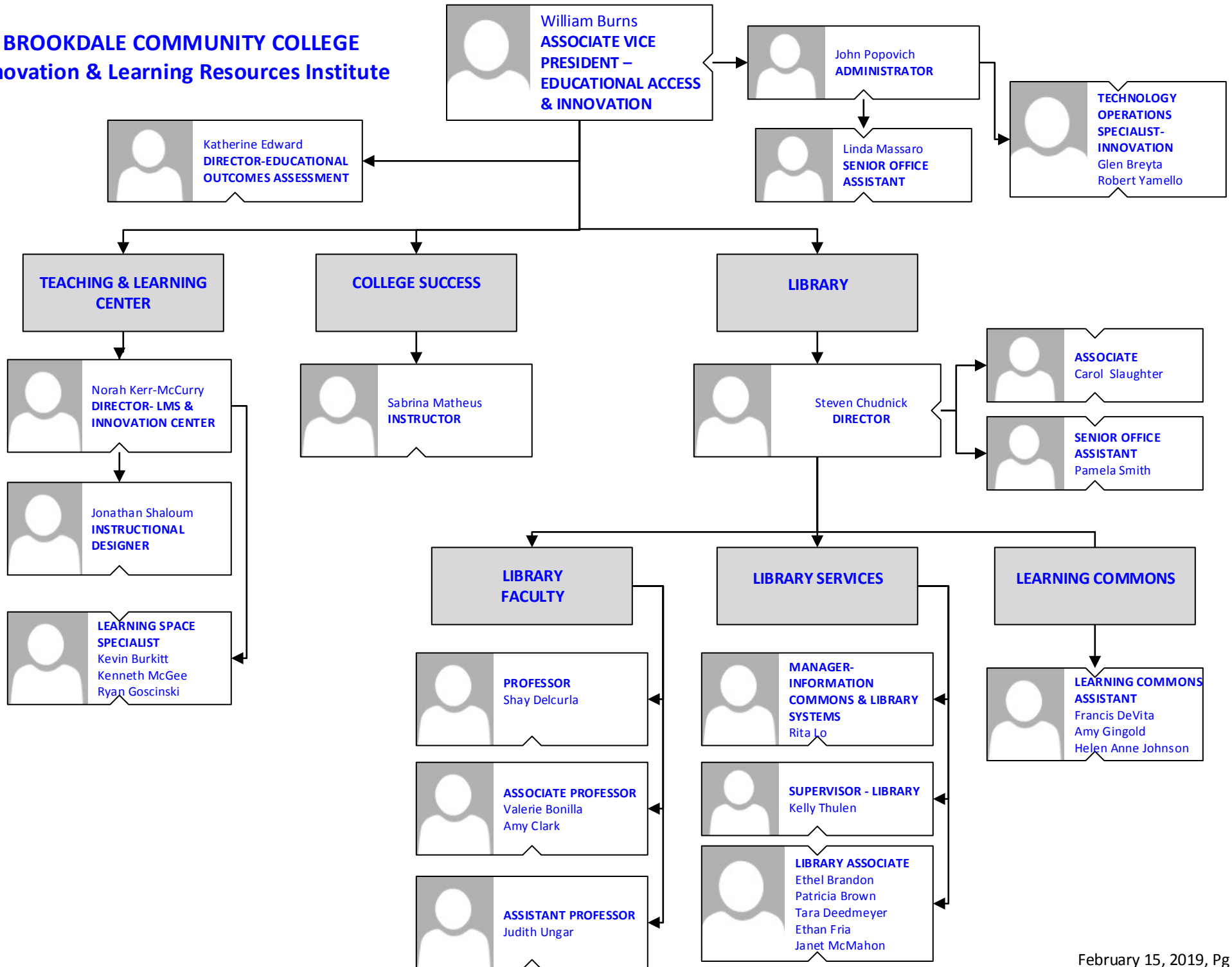
**Patricia Gallo**  
**DEAN- INSTITUTE FOR BUSINESS & SOCIAL SCIENCES**

**CURRICULUM DEVELOPMENT**

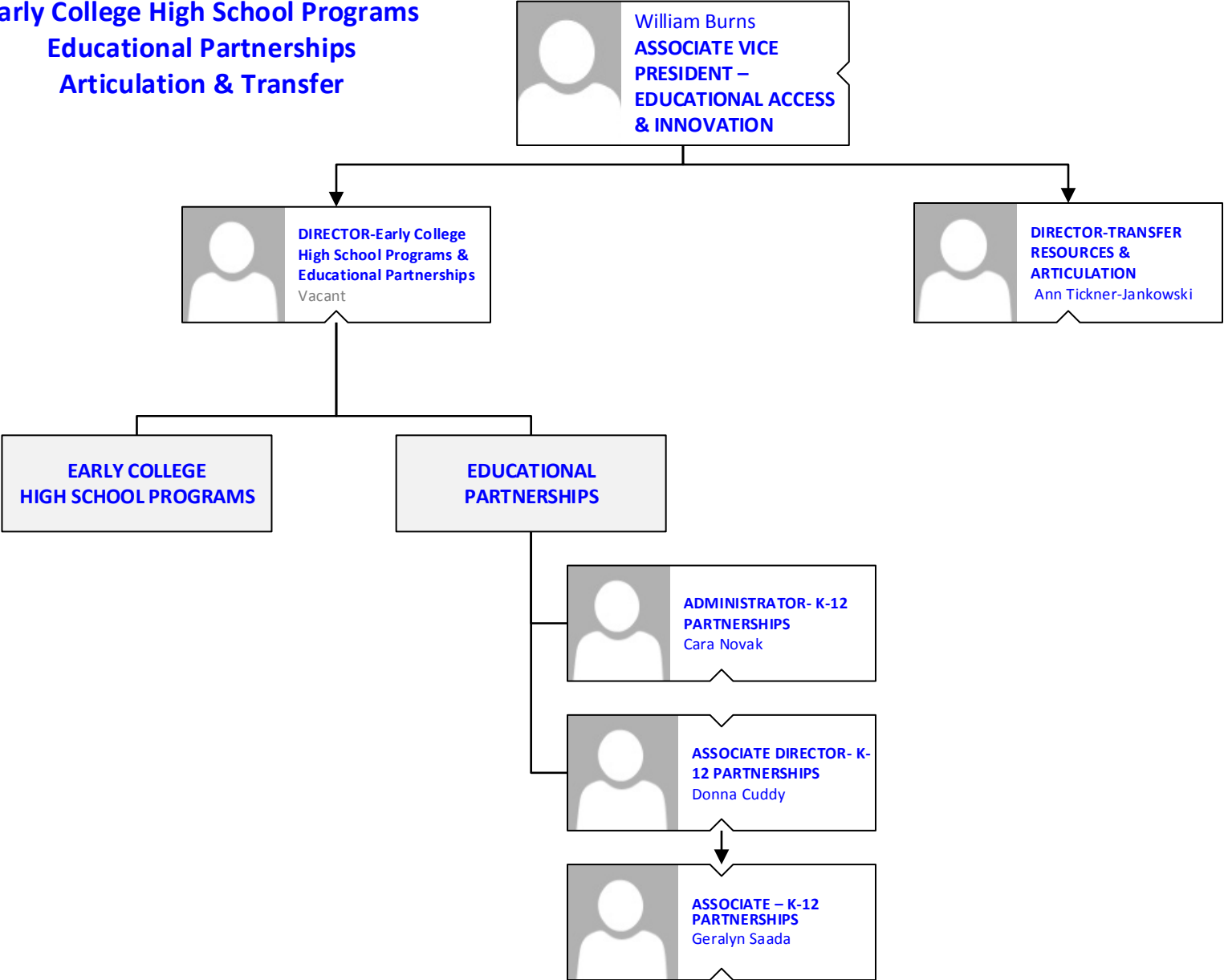


**Patricia Schuberth**  
**CONFIDENTIAL ASSISTANT FOR CURRICULUM DEVELOPMENT**

**BROOKDALE COMMUNITY COLLEGE**  
**Innovation & Learning Resources Institute**

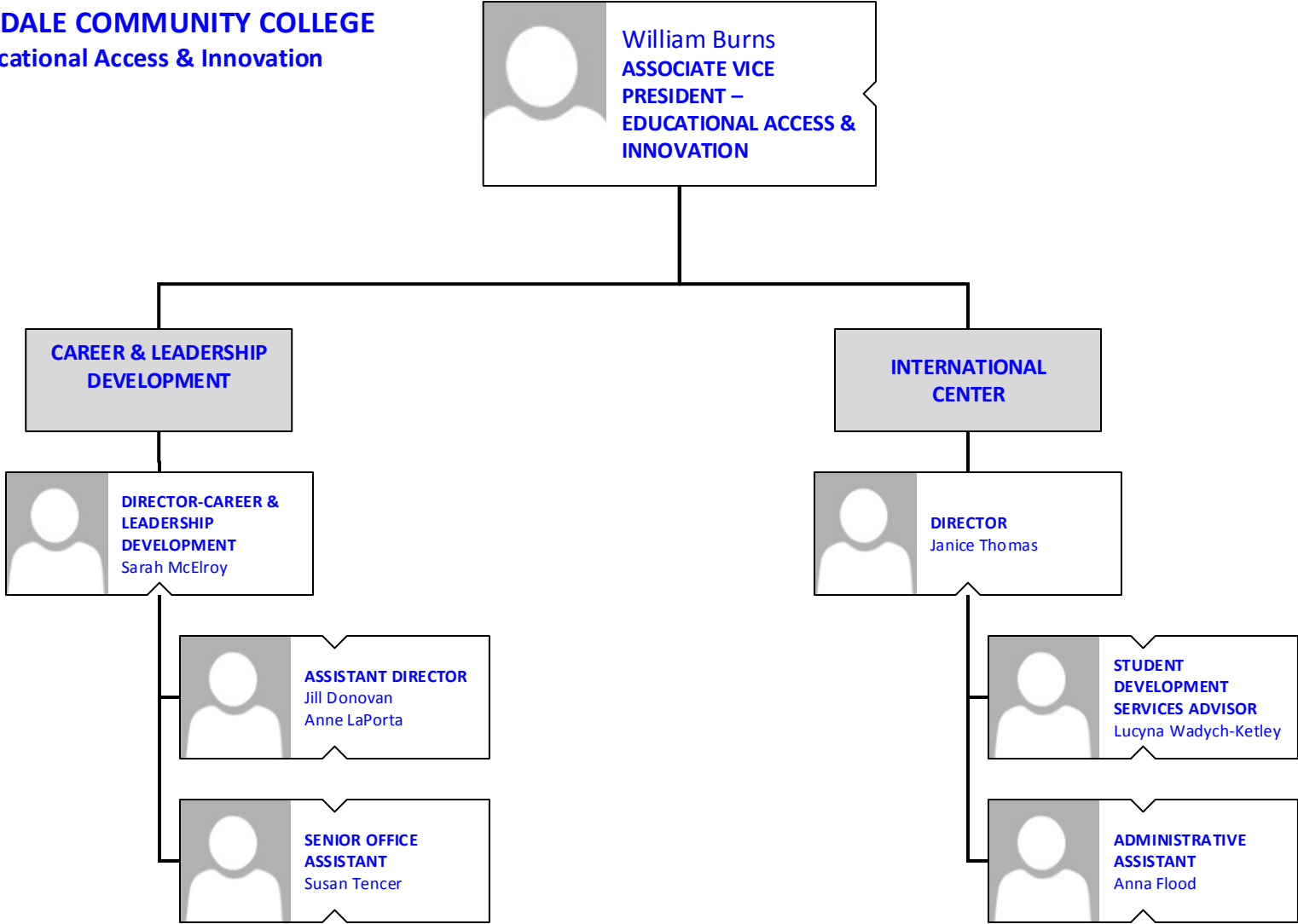


**BROOKDALE COMMUNITY COLLEGE**  
**Early College High School Programs**  
**Educational Partnerships**  
**Articulation & Transfer**





**BROOKDALE COMMUNITY COLLEGE**  
Educational Access & Innovation



# BROOKDALE COMMUNITY COLLEGE Regional Locations

**William Burns**  
ASSOCIATE VP –  
EDUCATIONAL  
ACCESS &  
INNOVATION

**INTERIM DEAN WALL  
CAMPUS & REGIONAL  
LOCATIONS**  
Allison Fitzpatrick

Ann Marie Alfieri (.5)  
**CONFIDENTIAL  
ADMINISTRATIVE  
ASSISTANT II**

**FREEHOLD  
CAMPUS**

**ASSOCIATE DIRECTOR**  
Donna Bastedo  
Lynne Shaffrey

**CAMPUS  
ADMINISTRATOR**  
Peggy Austin

**ASSOCIATE –  
STUDENT SERVICES**  
Deborah Brown  
Denise Vigil

**STUDENT ASSISTANT**  
Karen Seiben  
Kamala Das

**BROOKDALE @  
LONG BRANCH**

**ASSOCIATE DIRECTOR**  
Jenna Moltisanti

**STUDENT SERVICES  
ASSOCIATE**  
Cecelia Rodriguez

**HIGHER EDUCATION  
CENTER ASSOCIATE**  
Vacant (was Carolyn  
Dennis)

**BROOKDALE @  
NEPTUNE**

**DIRECTOR**  
Charanne Smith

**ASSOCIATE DIRECTOR**  
Paulette Simpson

**STUDENT ASSISTANT**  
Leah Wasacz  
(Multiple location  
assignment + Wall)

**HIGHER EDUCATION  
CENTER ASSOCIATE**  
Maria Maccanico

**BROOKDALE @  
HAZLET**

**DIRECTOR**  
Bruce Marich

**ASSOCIATE DIRECTOR**  
Elizabeth Kruijssen

**STUDENT ASSISTANT**  
Shanna Williams  
(Multiple location  
assignment + LB)

**HIGHER EDUCATION  
CENTER ASSOCIATE**  
Donna Williams

**WALL CAMPUS**

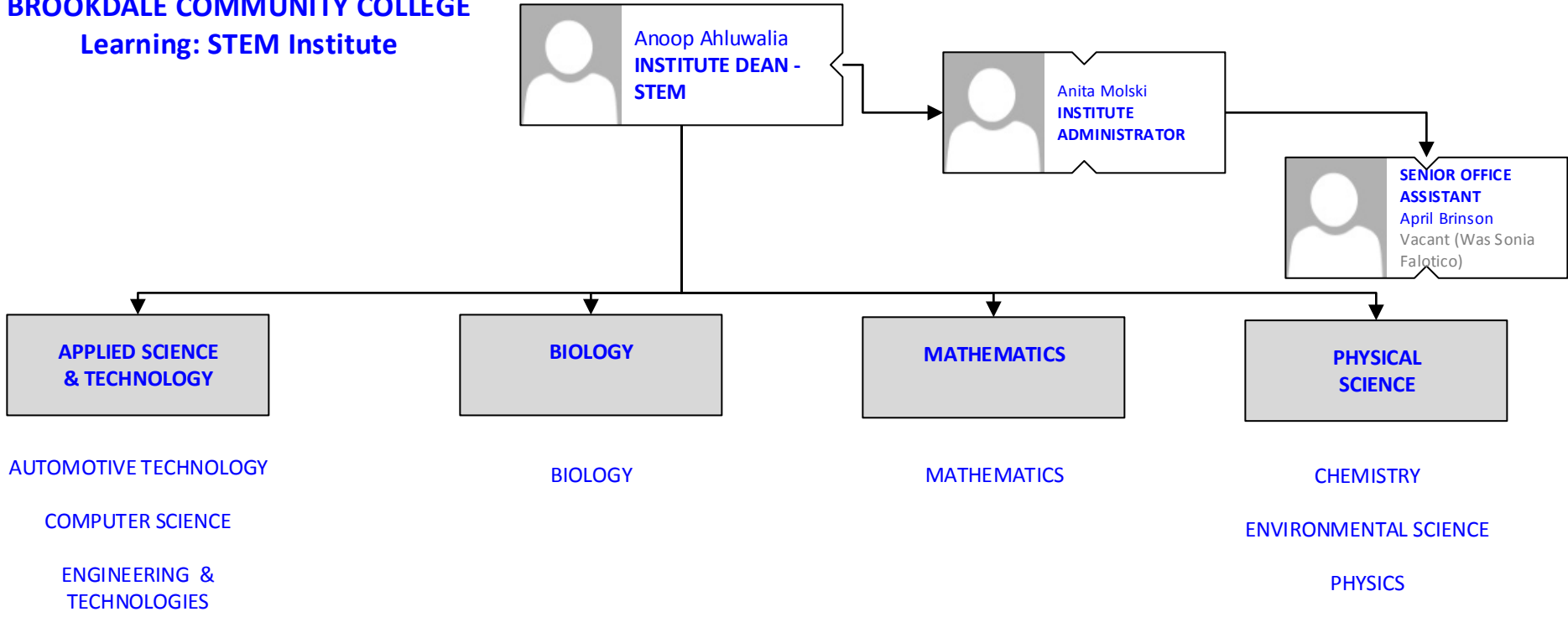
**ASSOCIATE DIRECTOR**  
Maureen Selheim

**STUDENT ASSISTANT**  
Patti Tschaen  
(Multiple location  
assignment + Hazlet)


**STUDENT SERVICES  
ASSOCIATE**  
Bruce Thompson  
(Multiple location  
assignment + Hazlet)

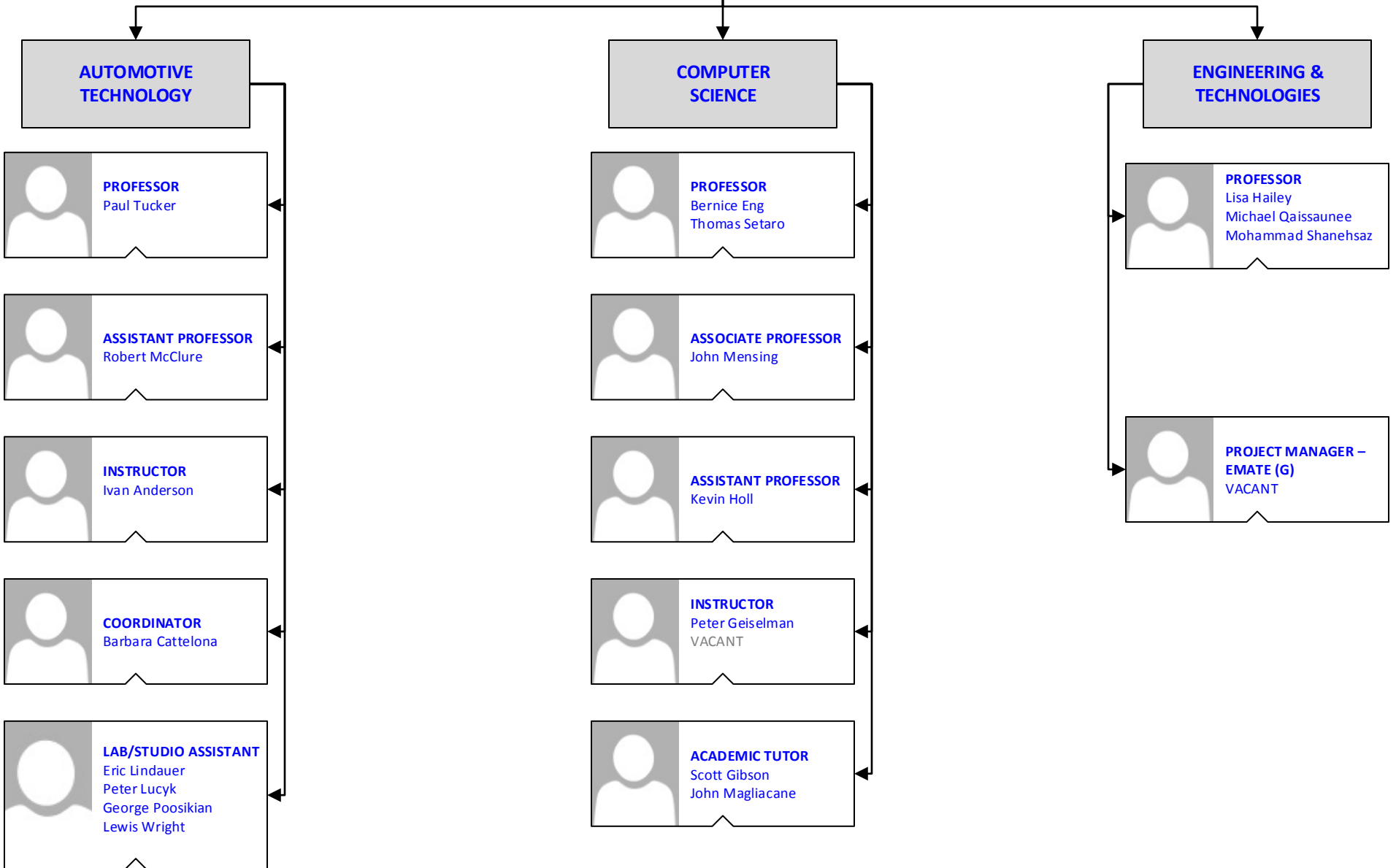
**HIGHER EDUCATION  
CENTER ASSOCIATE**  
Mary Ann Gurrera

**BROOKDALE COMMUNITY COLLEGE**  
**Learning: STEM Institute**




**BROOKDALE COMMUNITY COLLEGE**  
**Learning: STEM Institute**  
**Applied Science & Technology**

 **Anoop Ahluwalia**  
**DEAN**



**BROOKDALE COMMUNITY COLLEGE**  
**Learning: STEM Institute**  
**Biology**



**Anoop Ahluwalia**  
**DEAN**

**BIOLOGY**



**PROFESSOR**  
James Crowder  
Patricia Dillon  
Carey Fox



**ASSOCIATE PROFESSOR**  
Robert Martens  
Maryann Smith  
Caroline Wong



**ASSISTANT PROFESSOR**  
Cheryl Fencik  
Gitanjali Kundu  
Margo Wolfson




**INSTRUCTOR**  
Kristen Peterson



**INSTRUCTIONAL ASSISTANT**  
Gregory Augustino  
Robert Gant  
Vacant (was Alexis Irvin)  
Maria Judice  
Sally Kimble  
Barbara Seuffert  
Leslie VanCleve  
Marianne Velez  
Laina Tollefsen

**BROOKDALE COMMUNITY COLLEGE**  
**Learning: STEM Institute**  
**Mathematics**




**Anoop Ahluwalia**  
**DEAN**

**MATHEMATICS**




**PROFESSOR**  
Teresa Healy  
Gregory Liano  
Olga Malpica Proctor  
Brian McKeon  
Glenn Noe  
Linda Wang  
Armina Wey




**ASSOCIATE PROFESSOR**  
Carole Carney  
Daniel Lopez  
Susan Monroe  
Andrew Panitz  
Rebecca Rozario



**ASSISTANT PROFESSOR**  
Nathalie Darden  
Michael Elmes  
Robert Fiore  
Stephen Hiamang  
Hanli Huang  
Abdul Rahman Kamara  
Sally Mulvey  
James Poinsett  
Spyros Roubos  
Gabriela Sprague  
Ashley Tasy  
Ana Teodorescu




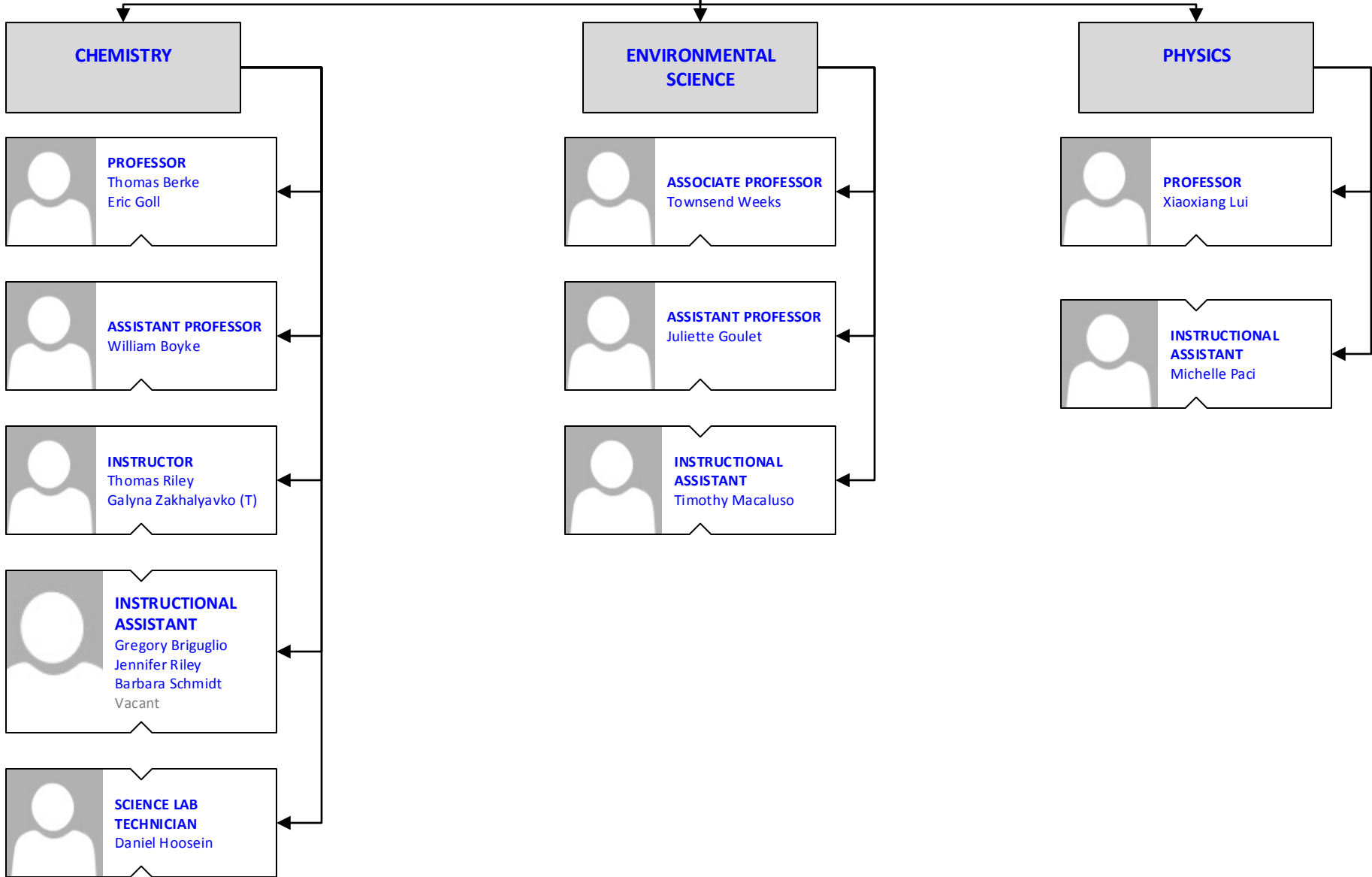
**INSTRUCTOR**  
Karina Aliaga  
Samantha Doluweera  
Michael Nolan  
Arianne Ross  
Prince Sekyi



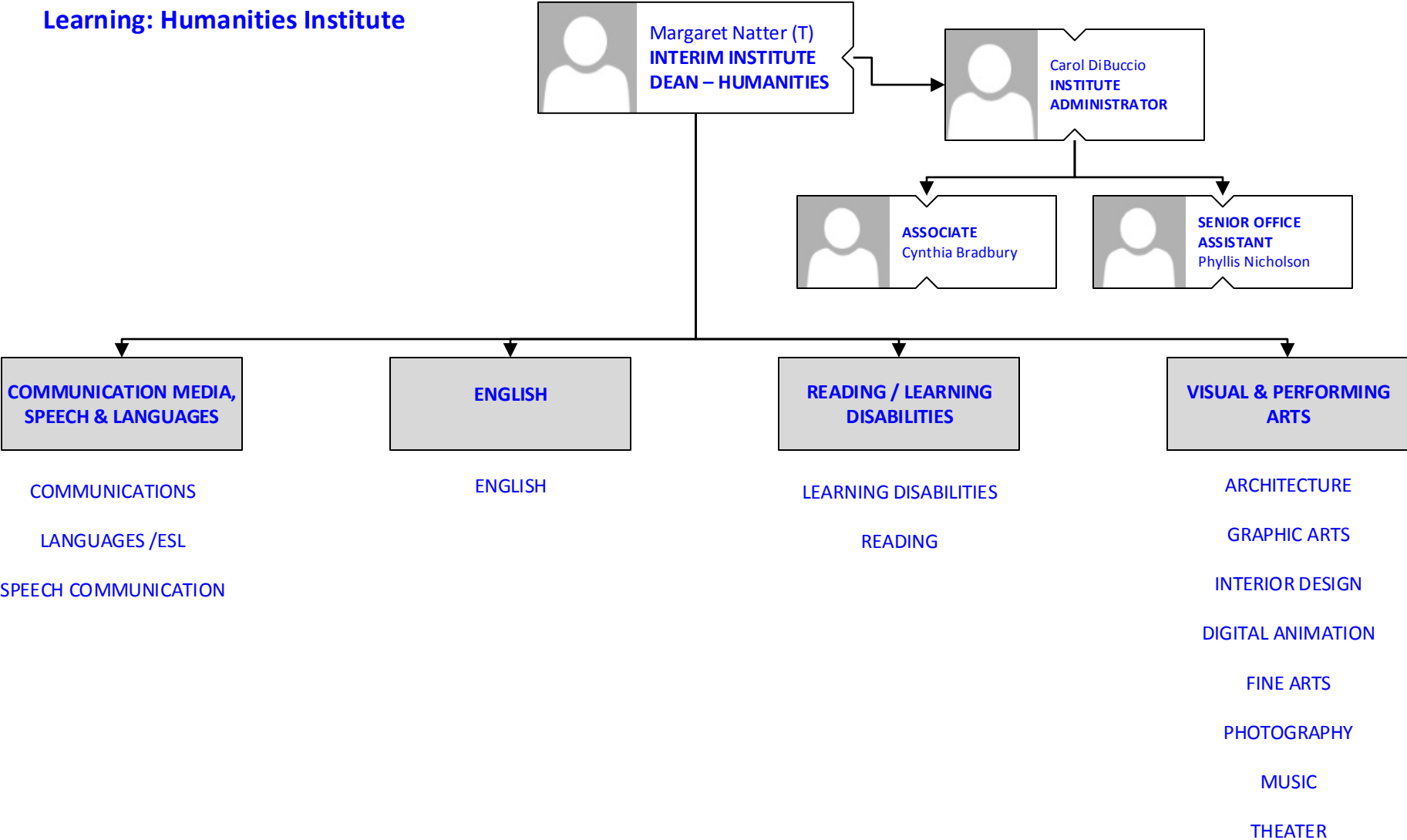
**ACADEMIC TUTOR**  
Deicy Ahmad-Chautre  
Ahmed Said  
Tatiana Shabat  
David Sita  
Heeja Kwon

**BROOKDALE COMMUNITY COLLEGE**  
**Learning: STEM Institute**  
**Physical Sciences**

 **Anoop Ahluwalia**  
**DEAN**

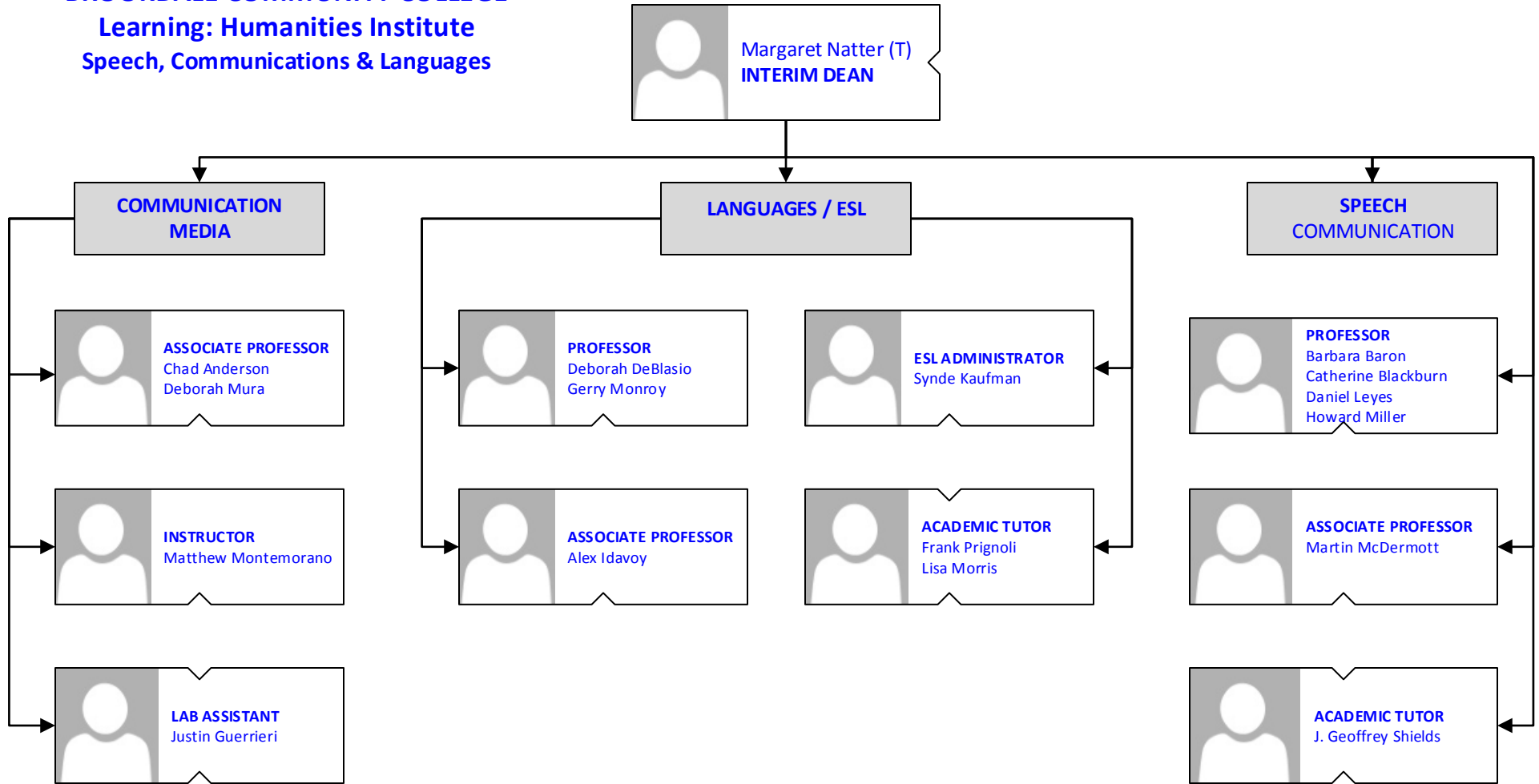


**BROOKDALE COMMUNITY COLLEGE**  
**Learning: Humanities Institute**





**BROOKDALE COMMUNITY COLLEGE**  
**Learning: Humanities Institute**  
**Speech, Communications & Languages**




**BROOKDALE COMMUNITY COLLEGE**  
**Learning: Humanities Institute**  
**English**




Margaret Natter (T)  
**INTERIM DEAN**

**ENGLISH**




**PROFESSOR**  
Roseanne Alvarez  
Bettejane Bolan-Kenney  
Marc Bonagura  
Richard Burke  
James Cody  
Karen D'Agostino  
Donna Flinn  
Marcia Krefetz-Levine  
Laura McCullough  
Nancy Noe  
Kurt Scheffler




**ASSOCIATE PROFESSOR**  
Michael Broek  
Dara Evans  
Geri Girard  
Brandon Gramer  
Kathleen Kennedy  
Suzanne Parker  
Donna Pope  
Angela Saragusa  
Christine Vasquez  
Vacant



**ASSISTANT PROFESSOR**  
Richard Dery  
Jennifer Kaminski  
Dina Long  
Kelsey Maki  
Robert McGovern  
Charles Mencil  
John Ryan

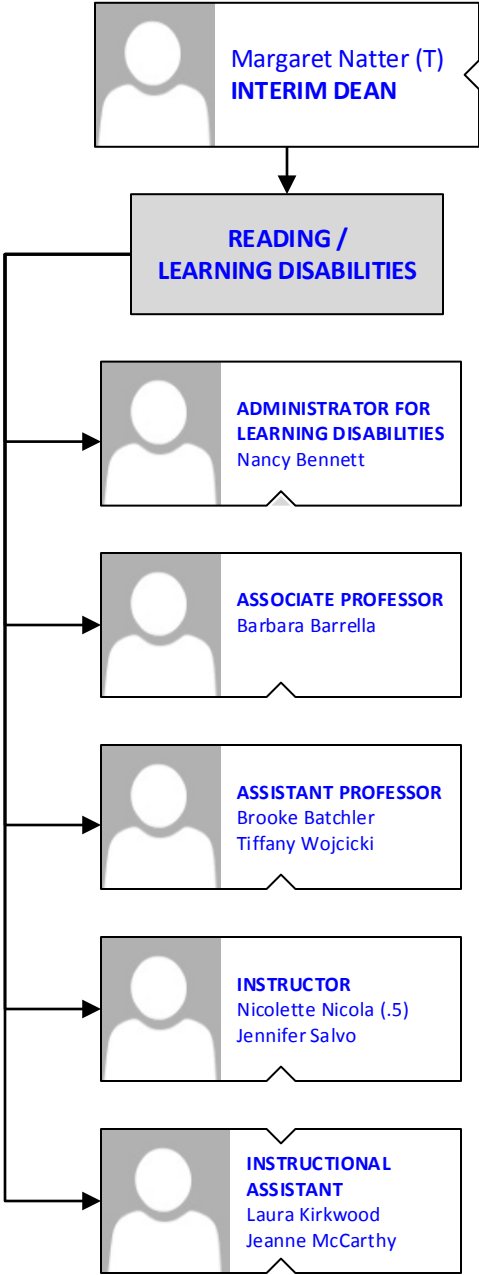


**INSTRUCTOR**  
Cameron Mount  
Heather Revesz  
Michele Locandro  
Vacant (was Winifred  
Blanset (T) )  
Vacant (was Sheila Duane  
(T))  
Nicolette Nicola (.5)  
Elana Maloney (T)



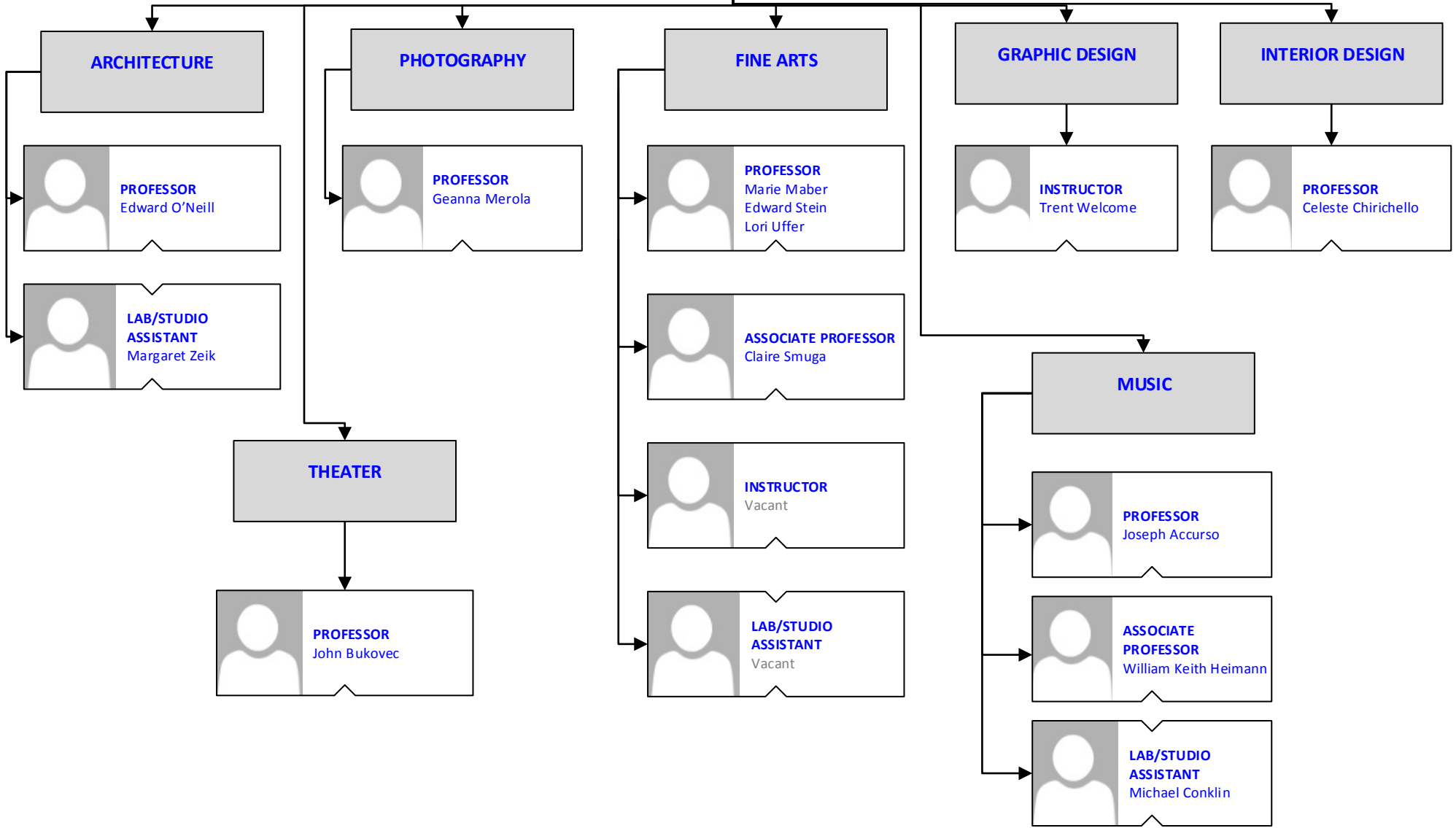
**ACADEMIC TUTOR**  
Dolores Palazzo  
Vacant (was Kelly Parr)  
Amanda Richardson  
Sheri Stanford  
Kathleen Vasile

**BROOKDALE COMMUNITY COLLEGE**  
**Learning: Humanities Institute**  
**Reading / Learning Disabilities**



**BROOKDALE COMMUNITY COLLEGE**  
**Learning: Humanities Institute**  
**Visual & Performing Arts**

 Margaret Natter (T)  
**INTERIM DEAN**



**BROOKDALE COMMUNITY COLLEGE**  
**Learning: Institute for Business & Social Science**

 Patricia Gallo  
**INSTITUTE DEAN – BUSINESS & SOCIAL SCIENCES**

 Joan Rudinski  
**INSTITUTE ADMINISTRATOR**

 **SENIOR OFFICE ASSISTANT**  
 Linda Morris  
 Denise Russo

**HONORS PROGRAM**

**CENTER FOR WORLD WAR II STUDIES & CONFLICT RESOLUTION**

**BUSINESS**

**APPLIED SOCIAL SCIENCES**

**HISTORY & PHILOSOPHY**

**SOCIAL SCIENCES**

ACCOUNTING

BUSINESS

CULINARY ARTS

ECONOMICS

HOSPITALITY MANAGEMENT

MARKETING/FASHION  
 MECHANDISING

CRIMINAL JUSTICE

EDUCATION

PARALEGAL STUDIES

HISTORY

PHILOSOPHY

ANTHROPOLOGY /  
 SOCIOLOGY / HUMAN  
 GEOGRAPHY

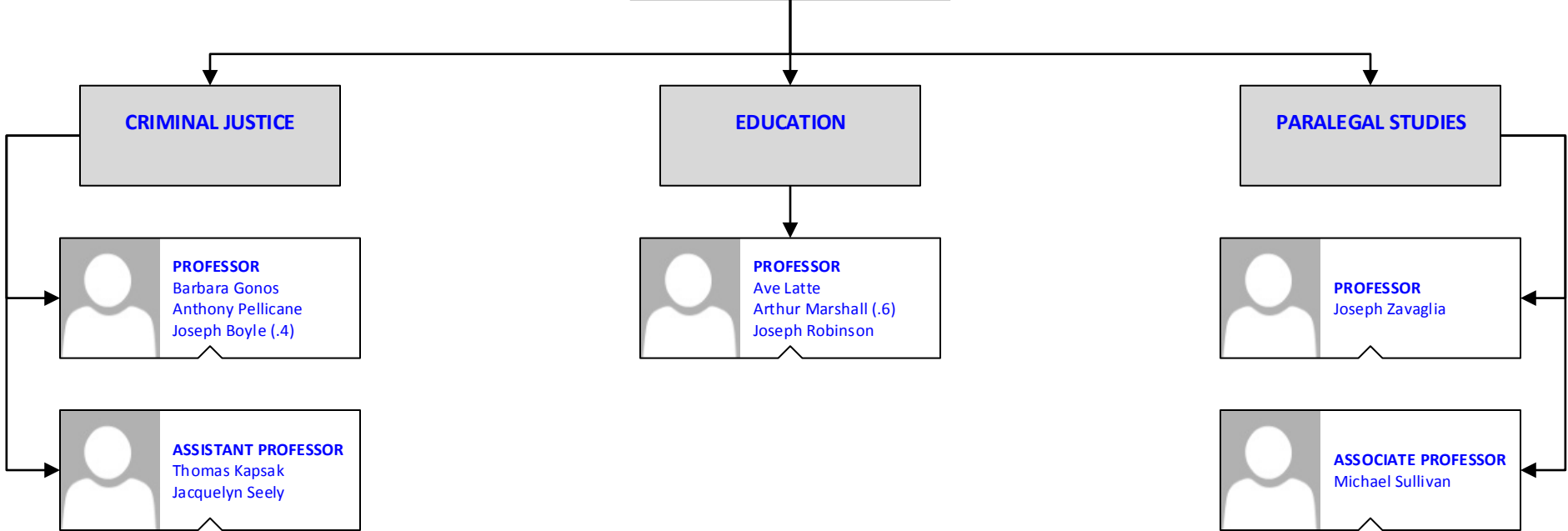
POLITICAL SCIENCE

PSYCHOLOGY

**BROOKDALE COMMUNITY COLLEGE**  
**Learning: Institute for Business &**  
**Social Science**  
**Applied Social Sciences**

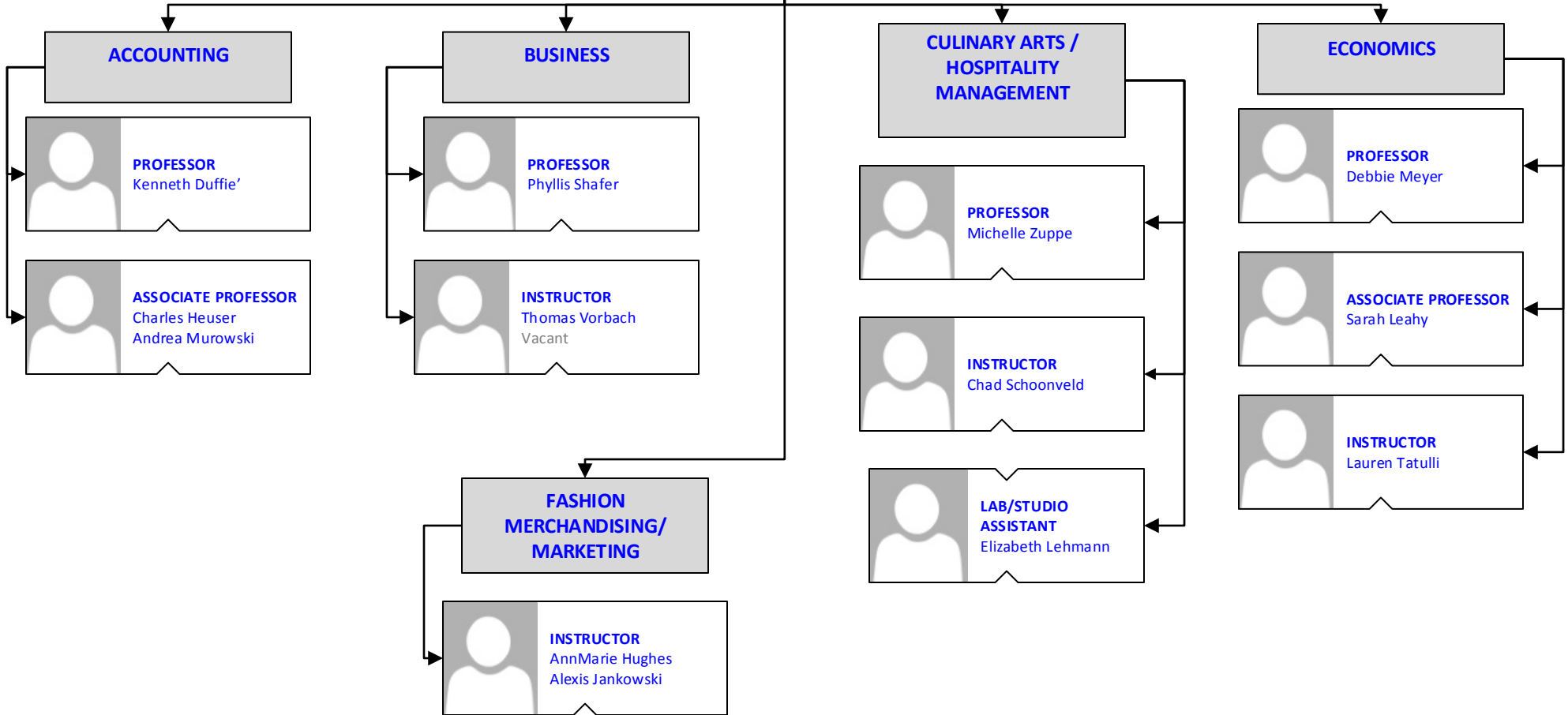


**Patricia Gallo**  
**DEAN**

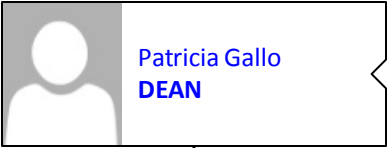


**BROOKDALE COMMUNITY COLLEGE**  
**Learning: Institute Business &**  
**Social Science**  
**Business**

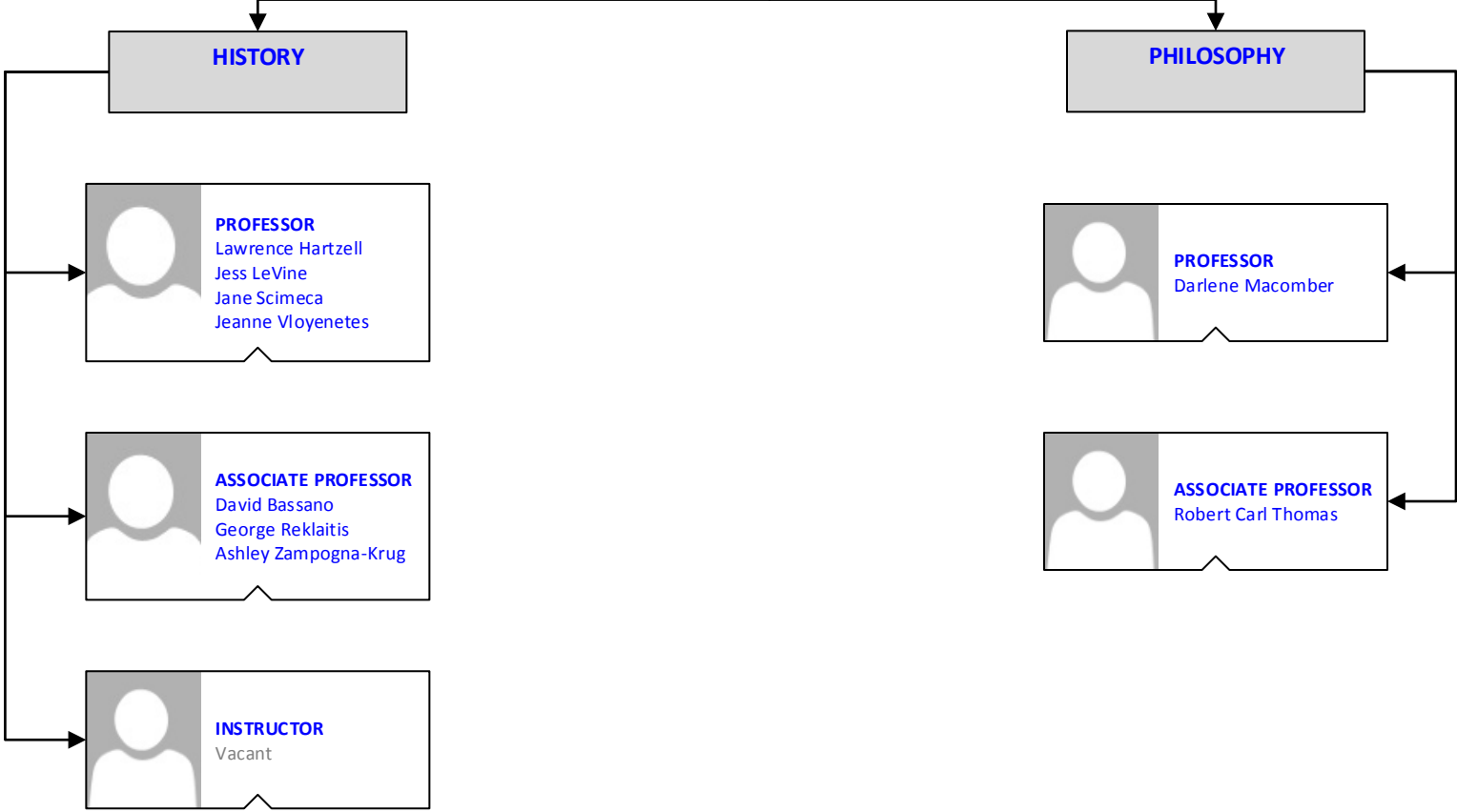
 **Patricia Gallo**  
**DEAN**



**BROOKDALE COMMUNITY COLLEGE**  
**Learning: Institute for Business &**  
**Social Science**  
**History & Philosophy**

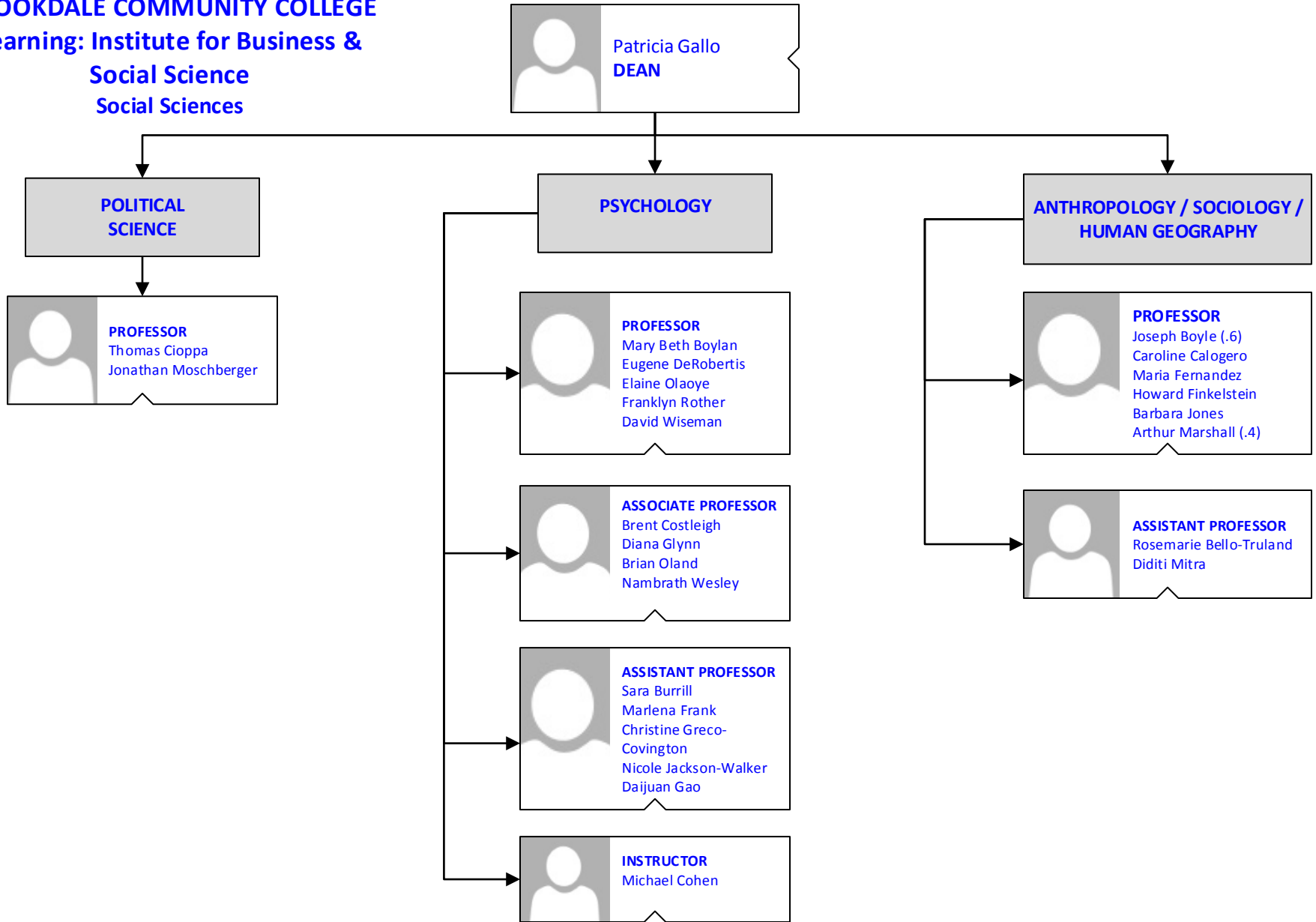


Patricia Gallo  
**DEAN**

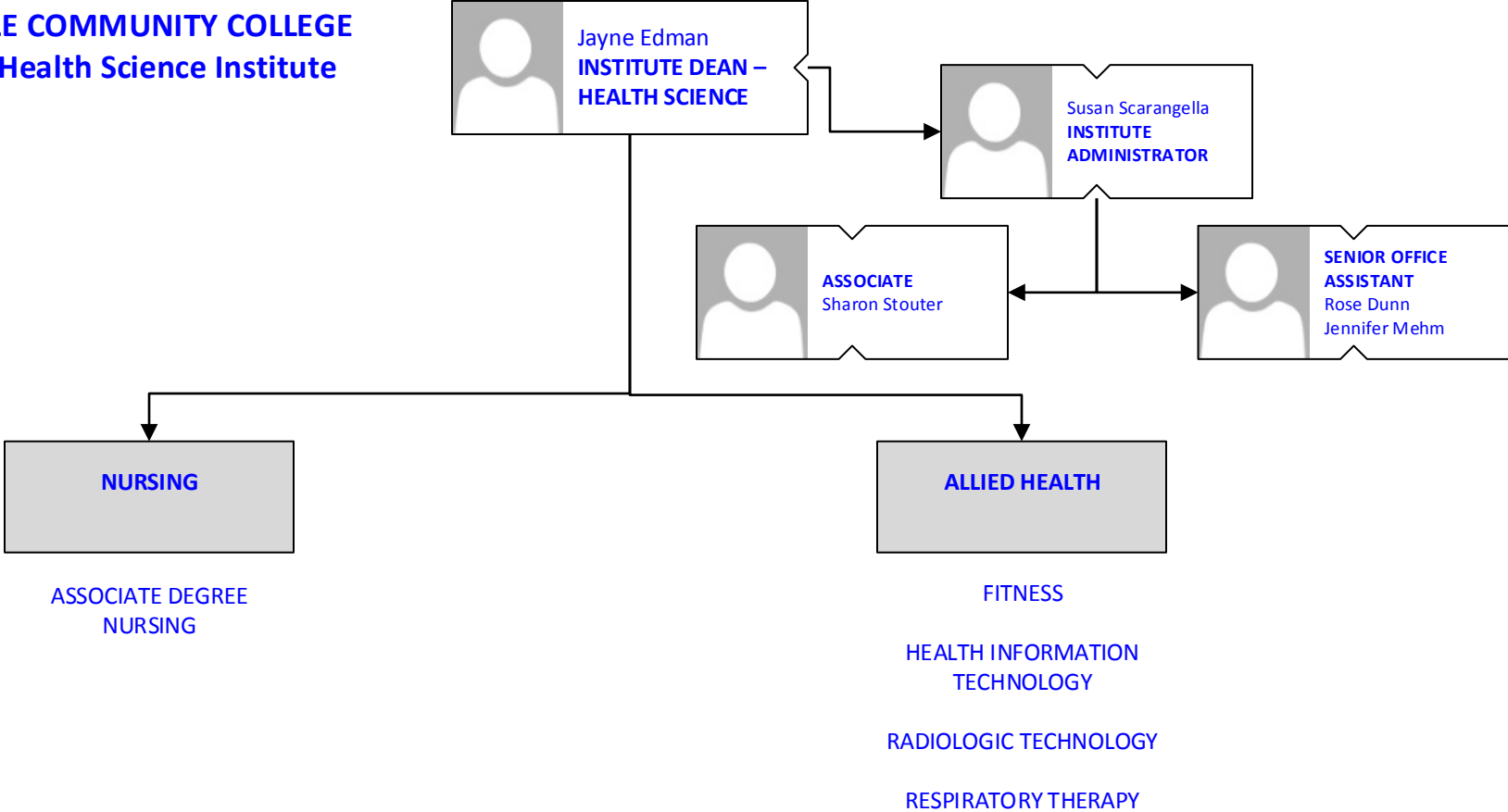




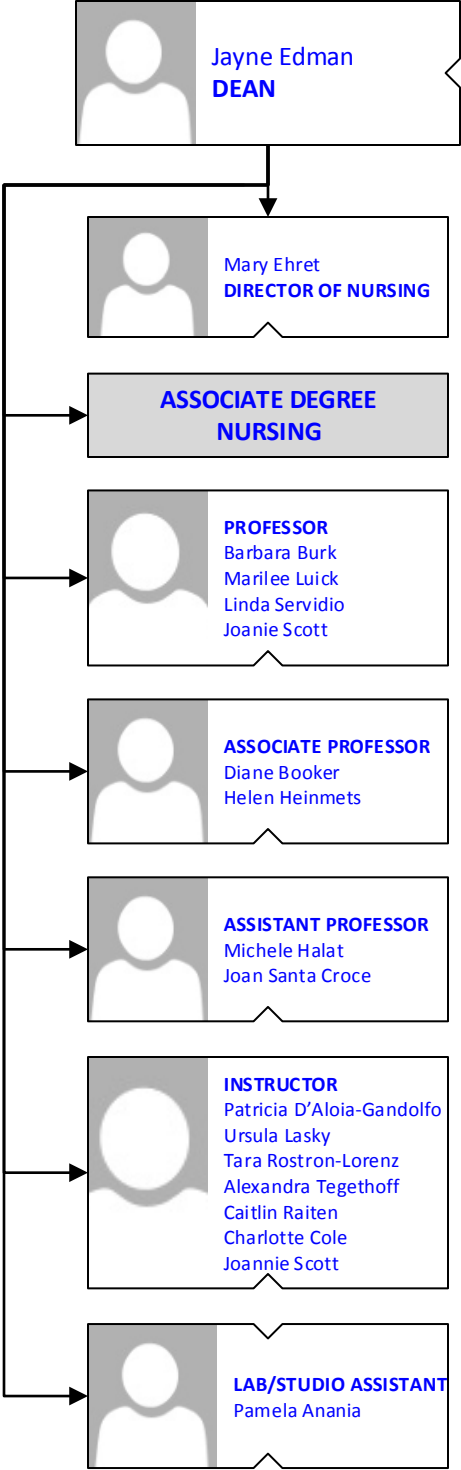
**BROOKDALE COMMUNITY COLLEGE**  
**Learning: Institute for Business &**  
**Social Science**  
**Social Sciences**



**BROOKDALE COMMUNITY COLLEGE**  
**Learning: Health Science Institute**



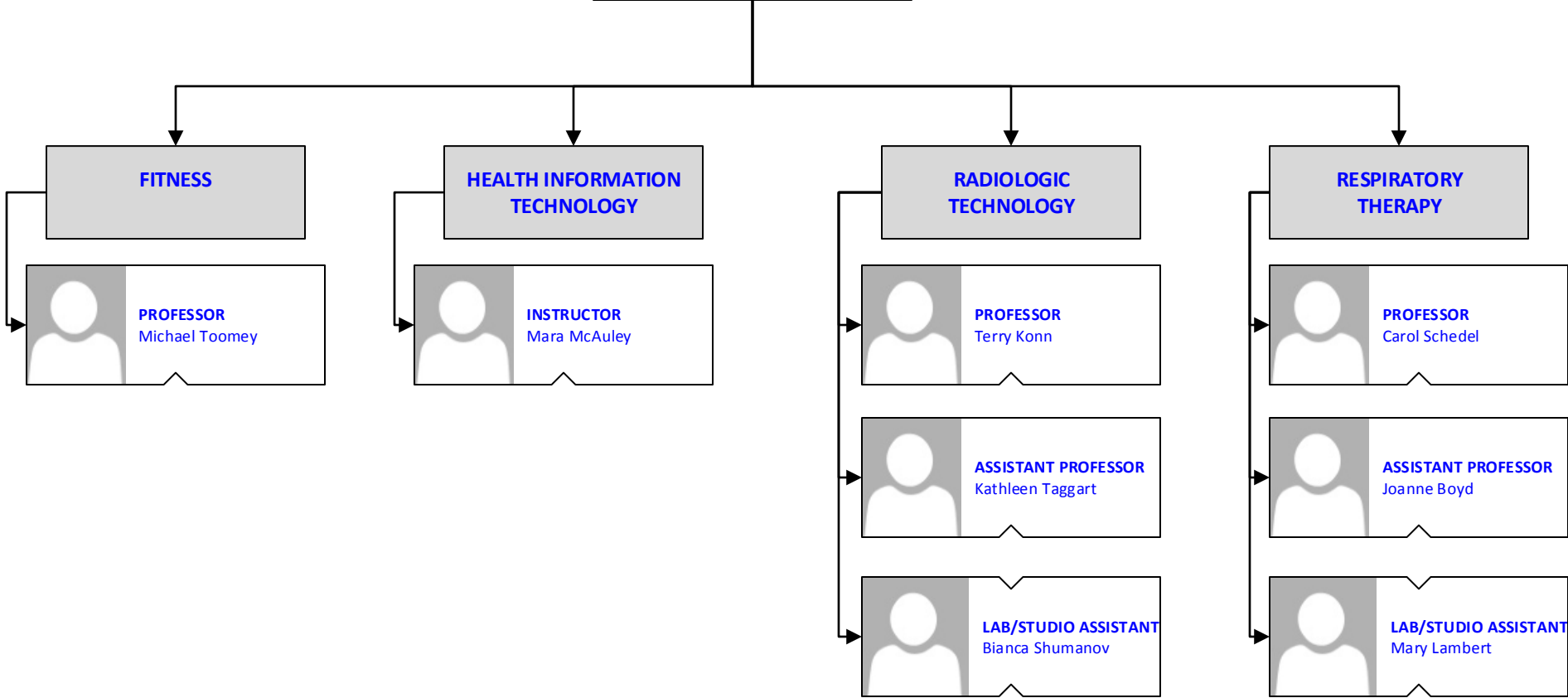
**BROOKDALE COMMUNITY COLLEGE**  
**Learning: Health Science Institute**  
**Associate Degree Nursing**



**BROOKDALE COMMUNITY COLLEGE**  
**Learning: Health Science Institute**  
**Allied Health & Fitness**



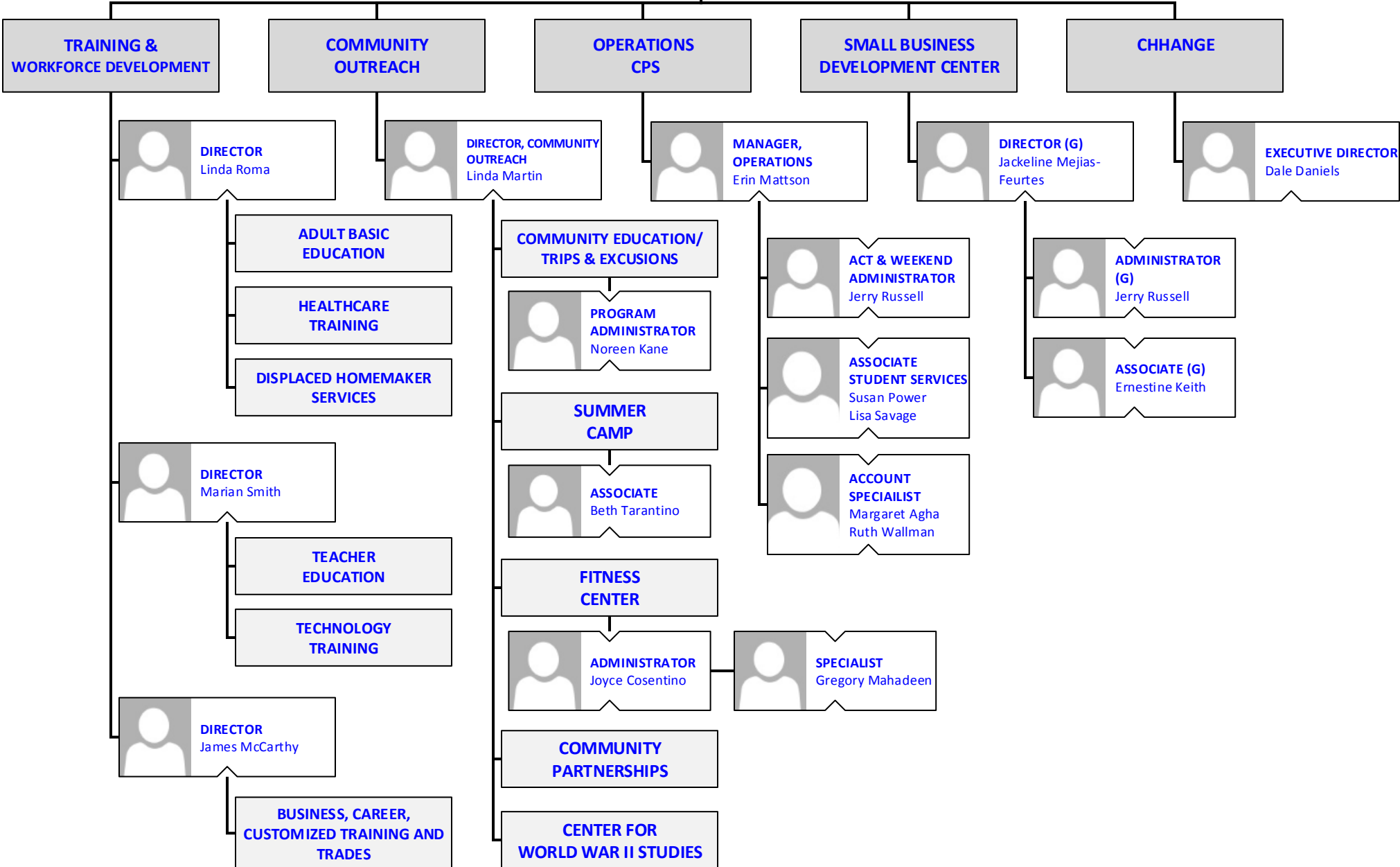
Jayne Edman  
**DEAN**



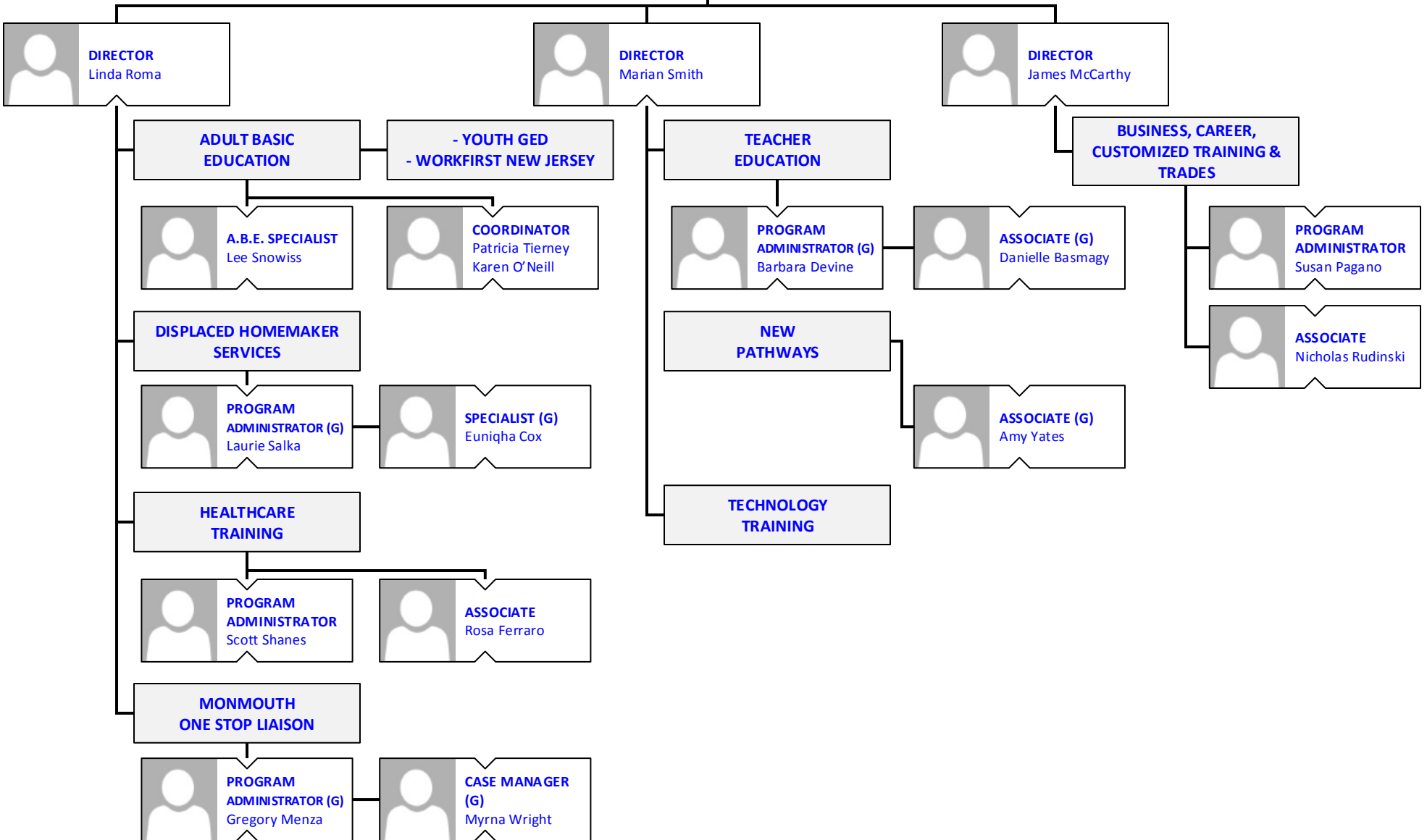
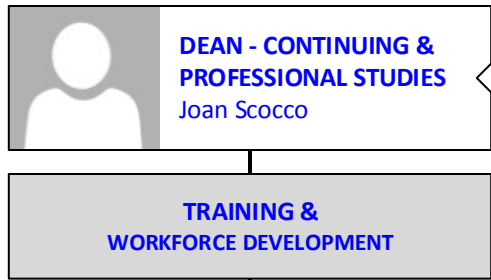
**BROOKDALE COMMUNITY COLLEGE**  
**Continuing & Professional Studies**

**DEAN - CONTINUING & PROFESSIONAL STUDIES**  
 Joan Scocco


**ASSOCIATE CONFIDENTIAL**  
 Vacant



**BROOKDALE COMMUNITY COLLEGE**  
**Continuing & Professional Studies**  
**Training & Workforce Development**



**BROOKDALE COMMUNITY COLLEGE**  
**Student Affairs Division**



**Yesenia Madas**  
**ASSOCIATE**  
**VICE PRESIDENT -**  
**STUDENT AFFAIRS**



**CONFIDENTIAL**  
**ASSISTANT TO THE**  
**VICE PRESIDENT**  
**Jeana Malmros**

**ENROLLMENT SERVICES**

**STUDENT ENGAGEMENT**

**STUDENT SERVICES**

**ENROLLMENT MANAGEMENT**  
 Academic Advising  
 Admissions  
 One Stop


**REGISTRATION & RECORDS**  
 Registration  
 Records  
 Scheduling & Campus Events

**FINANCIAL AID**

**STUDENT LIFE & ACTIVITIES**  
**ATHLETICS**

**PYSCHOLOGICAL COUNSELING**  
**DISABILITY SERVICES**  
**EDUCATIONAL OPPORTUNITY**  
**FUND**  
**STUDENT CONDUCT &**  
**COMPLIANCE**  
**TESTING SERVICES**  
**VETERANS CENTER**

**BROOKDALE COMMUNITY COLLEGE**  
**Student Affairs Division**  
**Enrollment Services**

 Yesenia Madas  
**ASSOCIATE VICE PRESIDENT**

 **INTERIM EXECUTIVE DIRECTOR ENROLLMENT SERVICES**  
 Herb Cohen

**ENROLLMENT SERVICES**


**ENROLLMENT MANAGEMENT**

**ACADEMIC ADVISING**

**ADMISSIONS**


**ONE STOP**

 **ADMINISTRATOR ENROLLMENT MANAGEMENT**  
 Lee Stockton

 **INTERIM DIRECTOR ADVISING & COUNSELING SERVICES**  
 Eleanor Horgan

 **DIRECTOR - ADMISSIONS**  
 Mary Beth Reilly


 **INTERIM DIRECTOR ONE STOP**  
 Nancy O'Shea (T)


 **ASSOCIATE**  
 Kathryn Borkowski  
 Dawn Corson

 **PROFESSOR - COUNSELING**  
 Dominick Nigro  
 Cathleen Goode

 **ADMISSIONS REPRESENTATIVE**  
 Kathleen Shea  
 Kristin Worthley  
 Shannen Deptula (T)

 **ASSOCIATE DIRECTOR - ONE STOP**  
 Kevin Nolan

 **ENROLLMENT SPECIALIST**  
 Barbara Taylor  
 Kristen Bacany

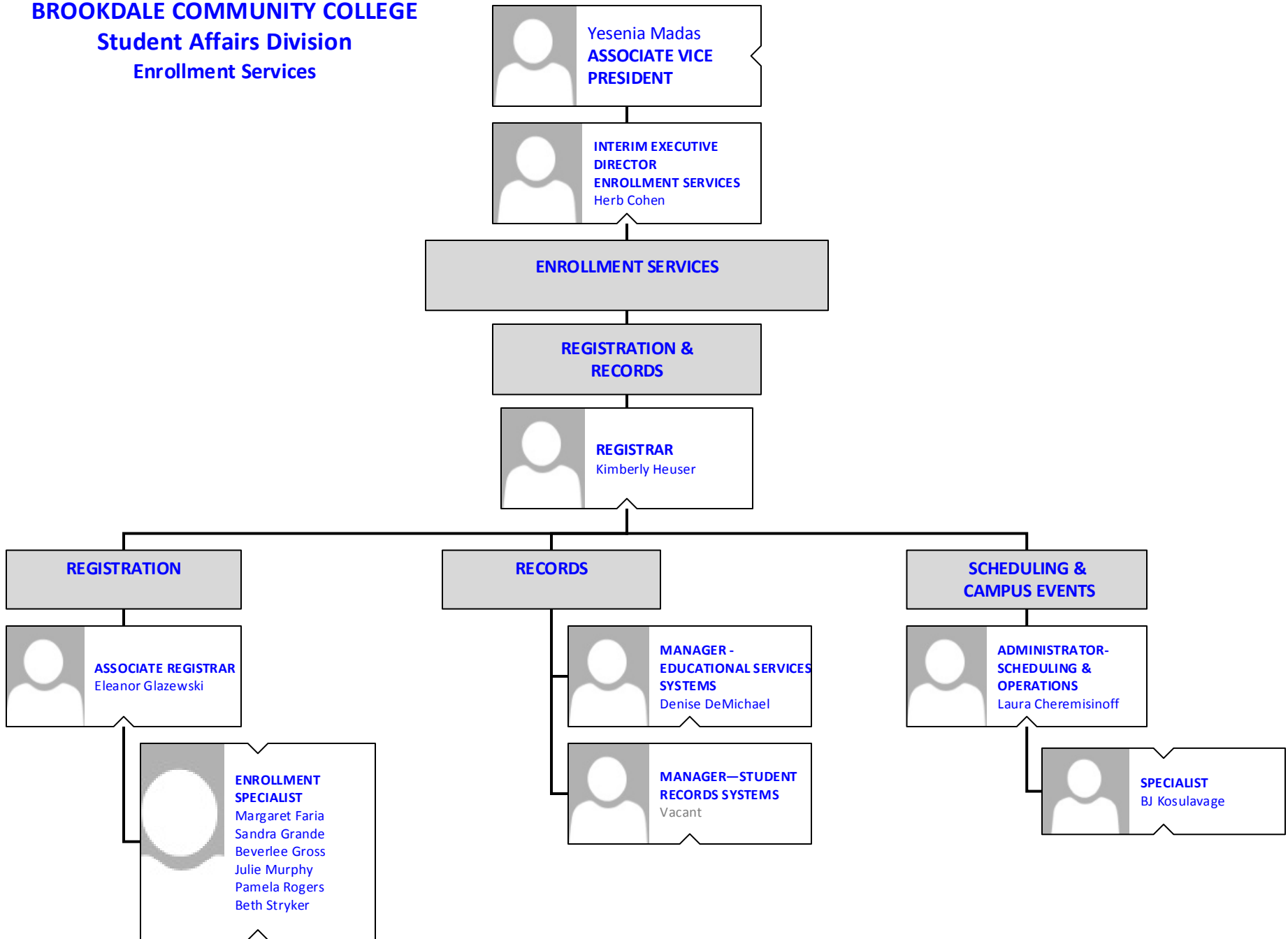
 **STUDENT SUCCESS COACH / ACADEMIC ADVISORS Effective 03.25.2019**  
 Joseph Caruso  
 Stephanie Farnkopf  
 Kirsten Nordgaard (T)  
 Suzanne Rauso  
 Jorge Terreros

 **ASSOCIATE-STUDENT SERVICES**  
 Tarin Varvar

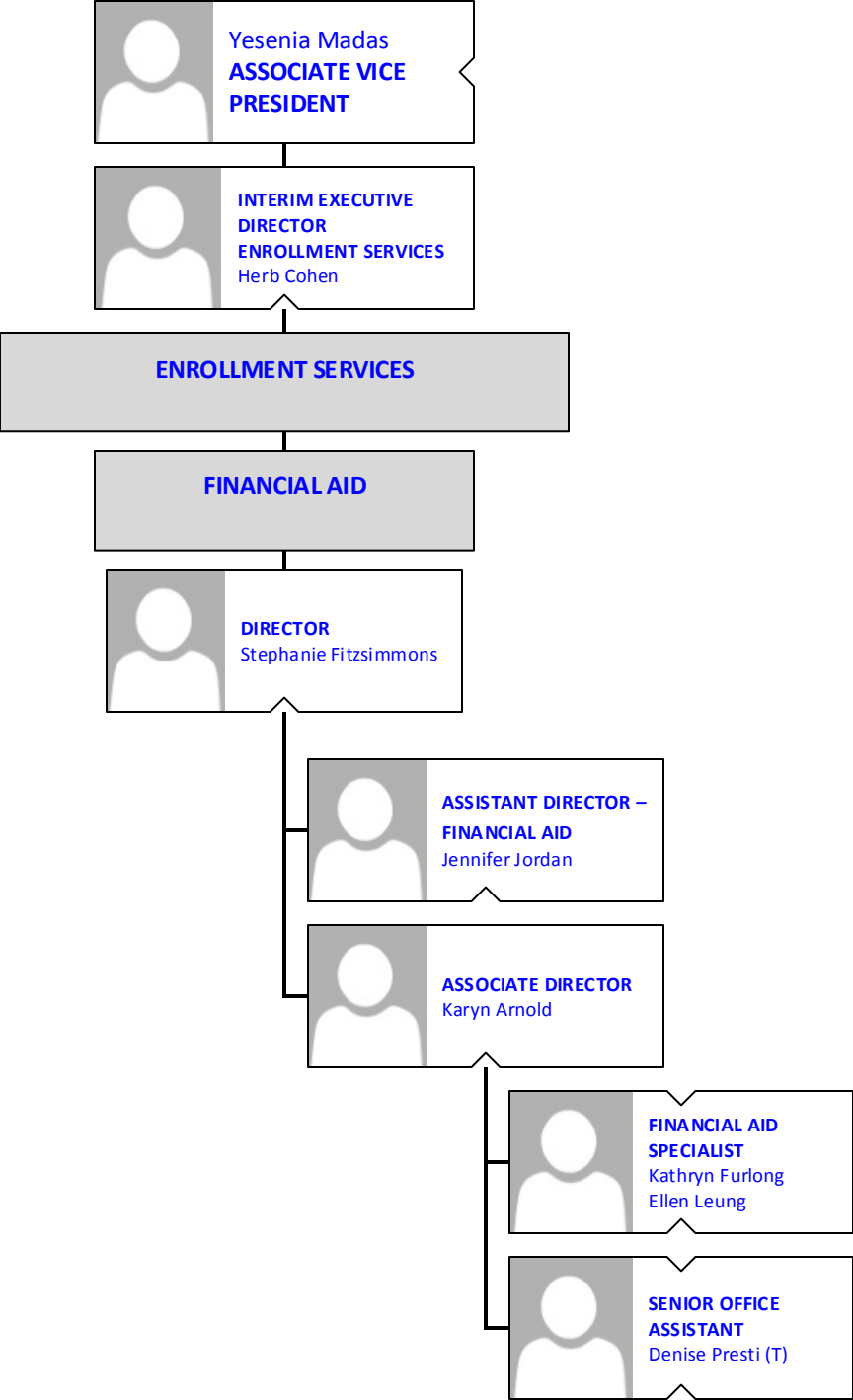
 **ONE STOP SPECIALIST Effective 03.01.2019**  
 Christopher Lowsky  
 Susan Mannino  
 Vacant  
 Vacant



**BROOKDALE COMMUNITY COLLEGE**  
**Student Affairs Division**  
**Enrollment Services**

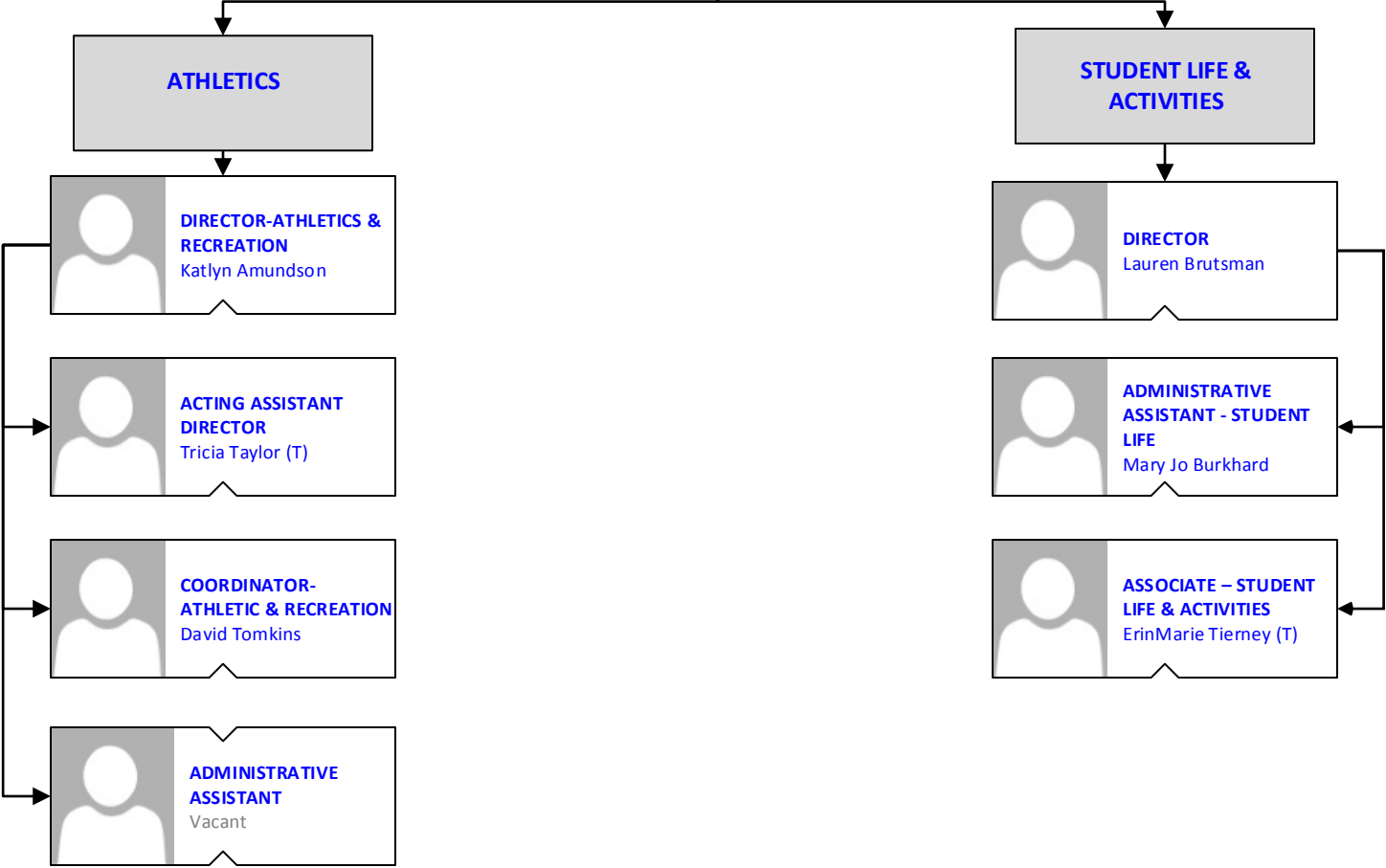


**BROOKDALE COMMUNITY COLLEGE**  
**Student Affairs Division**  
**Enrollment Services**

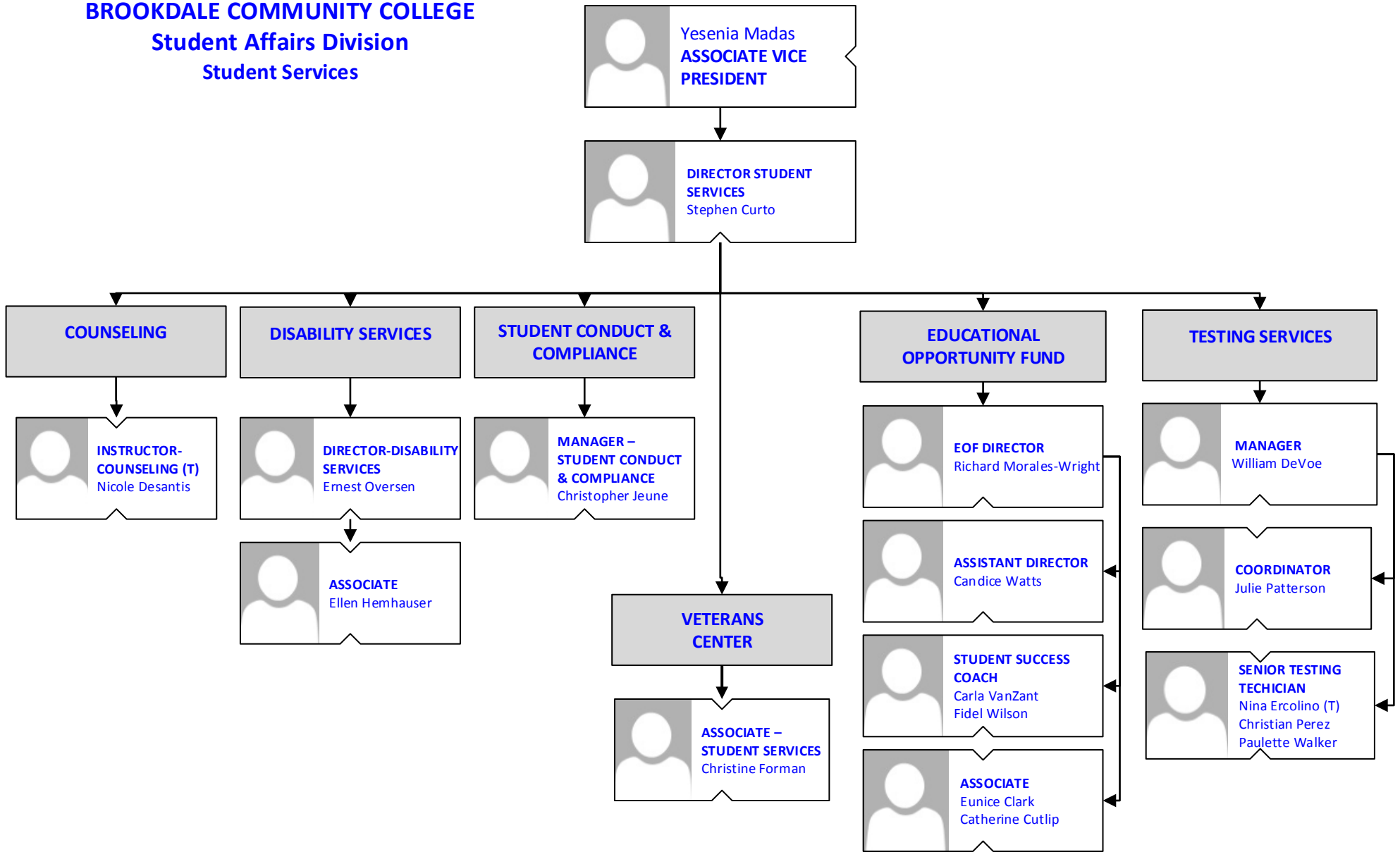


**BROOKDALE COMMUNITY COLLEGE**  
**Student Affairs Division**  
**Student Engagement**

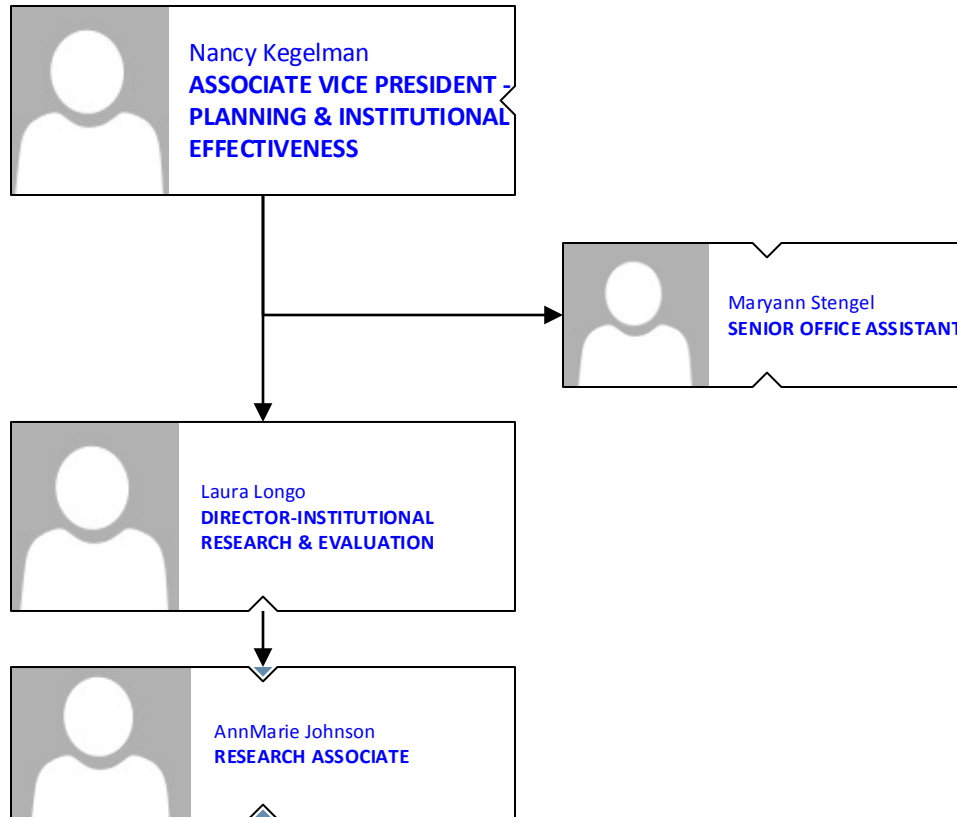
 **Yesenia Madas**  
**ASSOCIATE VICE**  
**PRESIDENT**



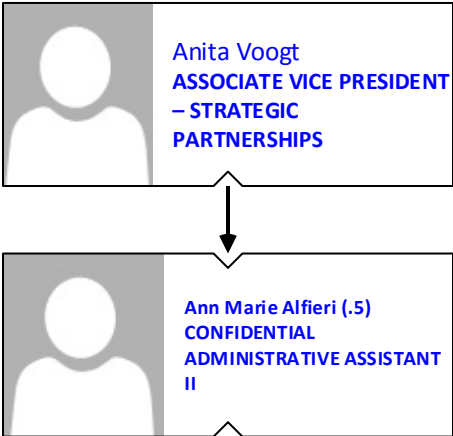
**BROOKDALE COMMUNITY COLLEGE**  
**Student Affairs Division**  
**Student Services**




**BROOKDALE COMMUNITY COLLEGE**  
**Planning & Institutional Effectiveness**



**BROOKDALE COMMUNITY COLLEGE**  
**Strategic Partnerships**



**BROOKDALE COMMUNITY COLLEGE**  
**Human Resources and Organizational Safety**



Patricia Sensi  
**ASSOCIATE VICE  
PRESIDENT-HUMAN  
RESOURCES &  
ORGANIZATIONAL SAFETY**



Kathleen McGreevy  
**CONFIDENTIAL  
ADMINISTRATIVE  
ASSISTANT**

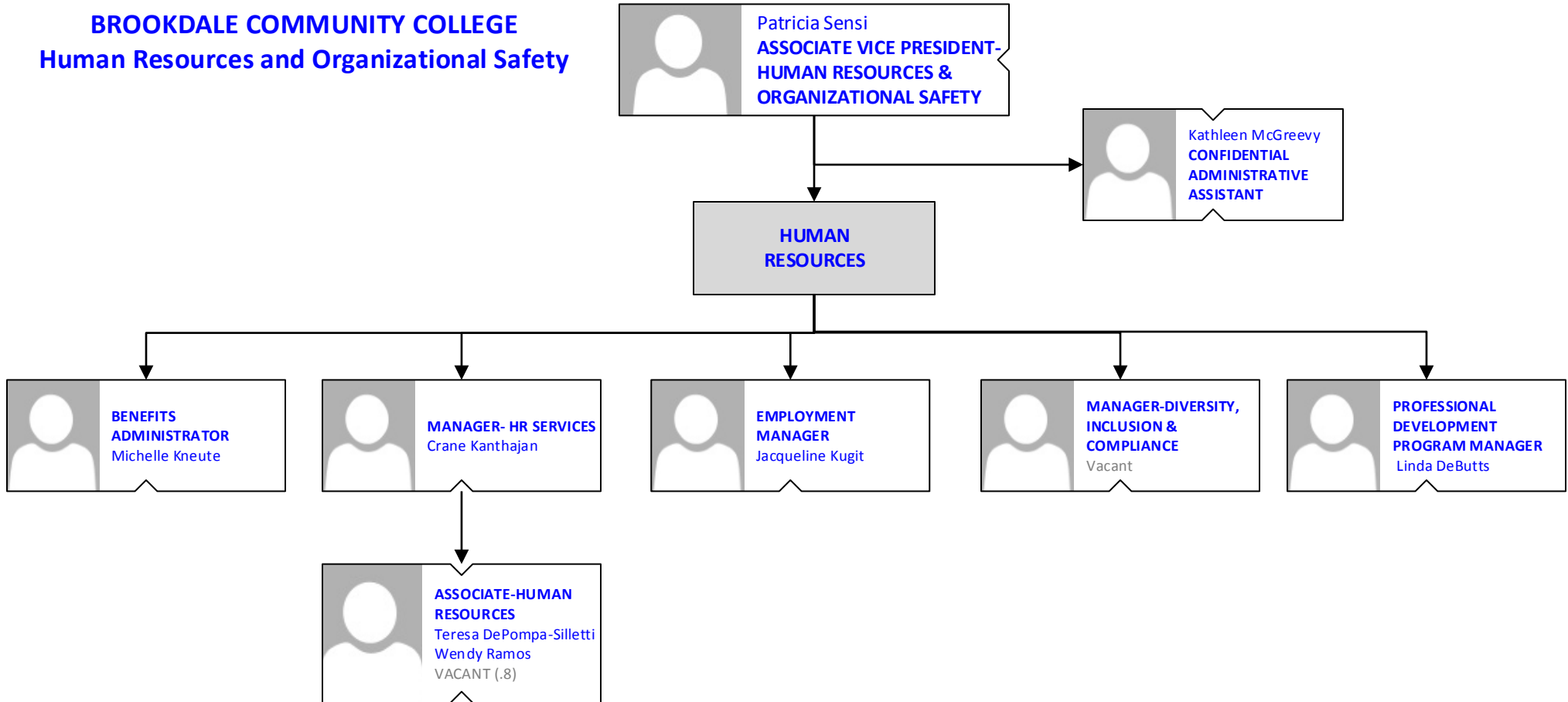
**HUMAN  
RESOURCES**

**POLICE  
DEPARTMENT**

- BENEFITS
- HR SERVICES
- EMPLOYMENT
- PROFESSIONAL DEVELOPMENT
- DIVERSITY, INCLUSION & COMPLIANCE

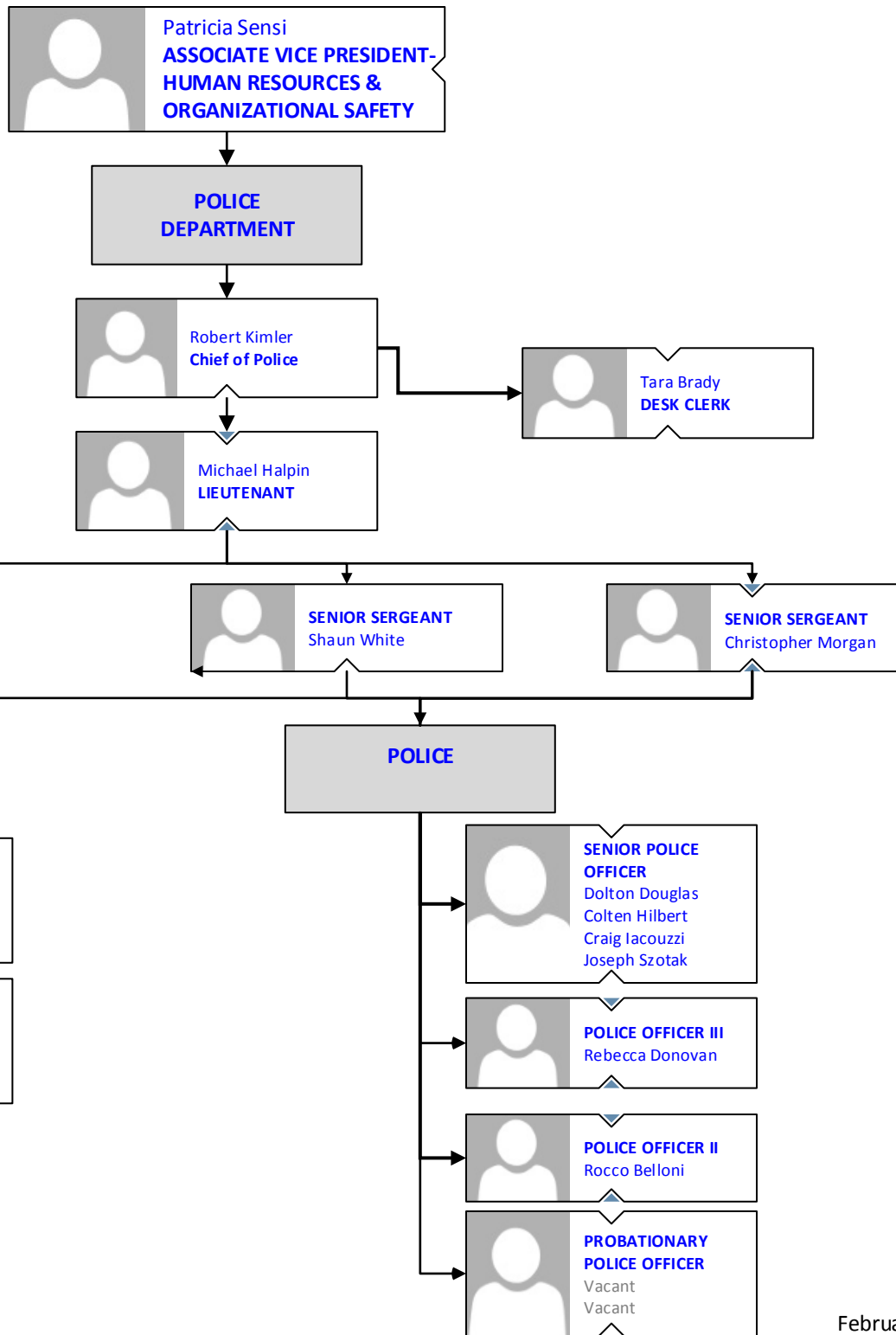
- POLICE
- SECURITY

**BROOKDALE COMMUNITY COLLEGE**  
**Human Resources and Organizational Safety**

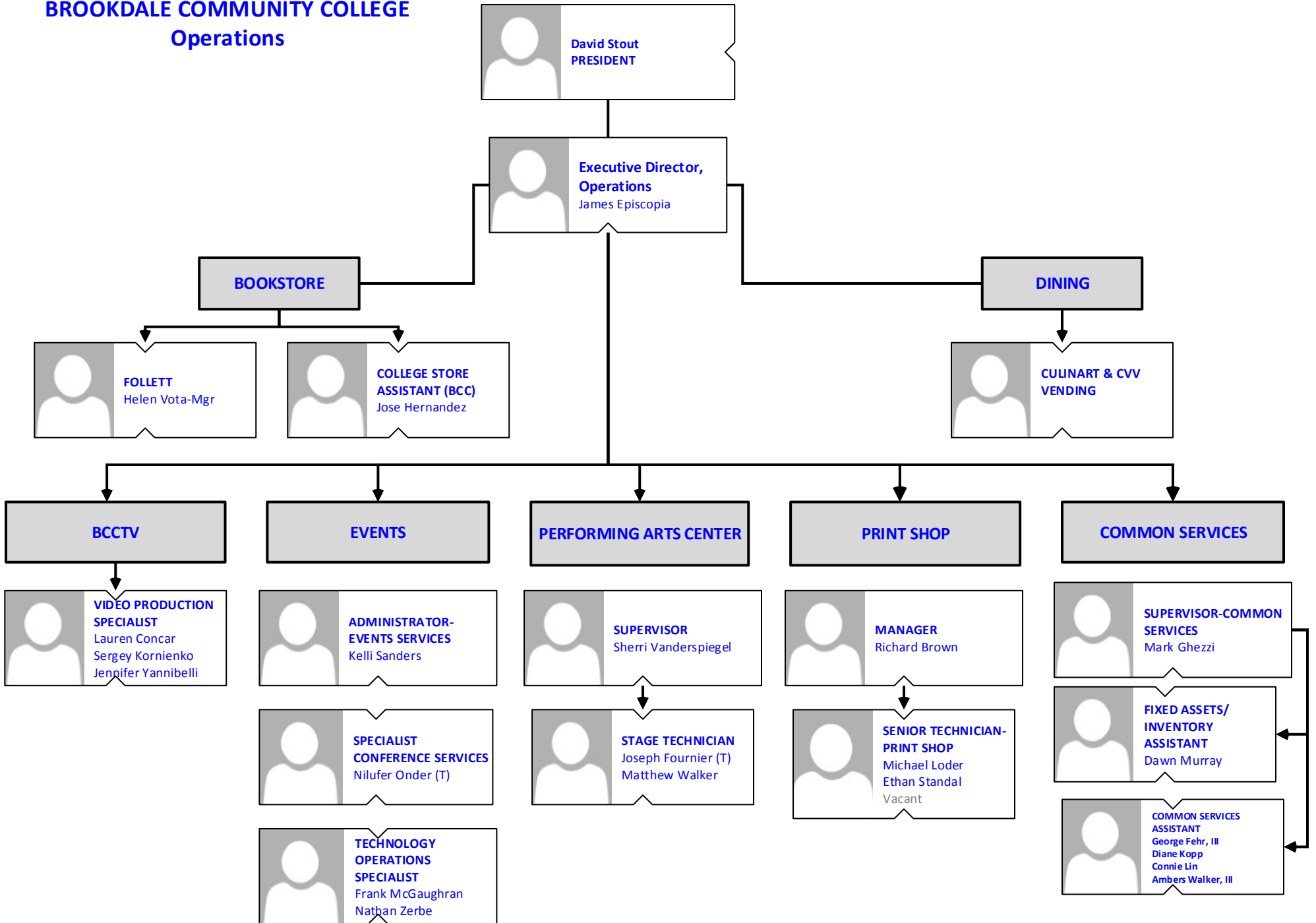




**BROOKDALE COMMUNITY COLLEGE**  
**Human Resources and Organizational Safety**



**BROOKDALE COMMUNITY COLLEGE**  
**Operations**



**BROOKDALE COMMUNITY COLLEGE**  
**Finance & Operations**

 **Joey Stoner**  
INTERIM VICE PRESIDENT  
FINANCE & OPERATIONS

 **ASSISTANT TO THE  
VICE PRESIDENT**  
Helen Loori

**FINANCE**

**OFFICE OF INFORMATION  
TECHNOLOGY**

**FACILITIES**

**FIRE SAFETY &  
ENVIRONMENTAL  
COMPLIANCE**

 **INTERIM DIRECTOR OF  
FINANCE & OPERATIONS**  
Teresa Manfreda

 **CHIEF INFORMATION  
OFFICER - ELLUCIAN**  
George Sotirion

 **DIRECTOR-FACILITIES  
MANAGEMENT &  
CONSTRUCTION**  
Timothy Drury

 **MANAGER-FIRE SAFETY &  
ENVIRONMENTAL  
COMPLIANCE**  
Christopher Otis

Accounts Payable  
Accounts Receivable  
Grants Administrator  
Payroll  
Purchasing

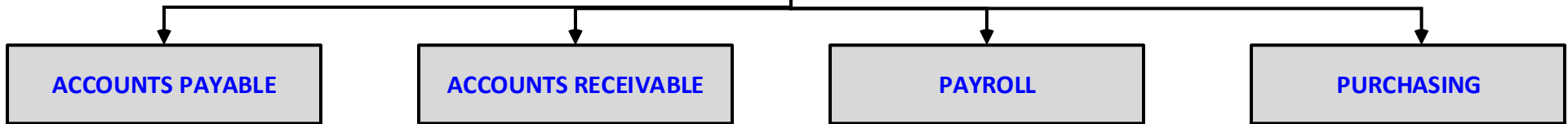
Facilities Operations  
Grounds  
Physical Plant / Utilities

**BROOKDALE COMMUNITY COLLEGE**  
**Finance**

**INTERIM DIRECTOR OF FINANCE & OPERATIONS**  
 Teresa Manfreda (T)

**MANAGER- FINANCE**  
 Vacant

**STAFF ACCOUNTANT**  
 Stuart Goodwin (T)



**MANAGER- A/P & SPECIAL PROJECTS**  
 Deborah Almedia

**ADMINISTRATOR-A/P**  
 Catherine King

**SPECIALIST-A/P**  
 Jennifer Barker  
 Barbara Cattelona

**MANAGER- A/R**  
 Michael DeStefano

**COORDINATOR-A/R**  
 Linda Zambrano

**SPECIALIST-A/R**  
 Sanna Chin  
 Donna Fallin  
 Victoria Massa  
 Maria Vespa

**MANAGER- PAYROLL**  
 Joan Messina

**PAYROLL ADMINISTRATOR**  
 Emily Sullivano

**PAYROLL SPECIALIST**  
 Patricia Meyers

**SENIOR ASSISTANT-PAYROLL**  
 Dawn Taylor

**MANAGER-PURCHASING**  
 Kim Van Lew

**SPECIALIST PURCHASING**  
 Patricia Kearns

**SENIOR ASSISTANT-PURCHASING**  
 Jeannette Lepre

**BROOKDALE COMMUNITY COLLEGE**  
**Facilities**

