



Using Zoom:

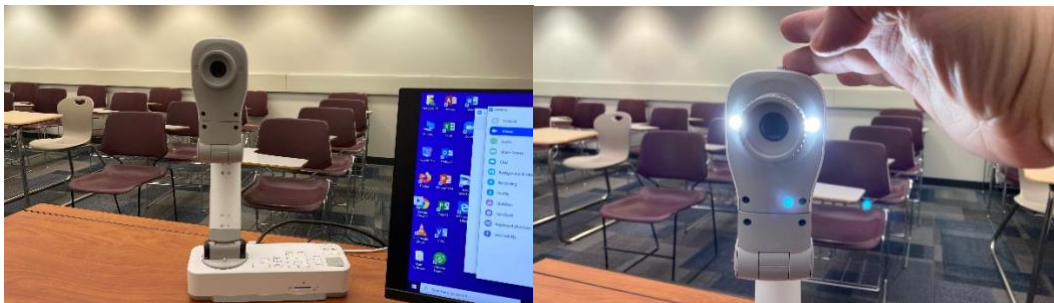
With Epson Document Camera and Interactive White Board



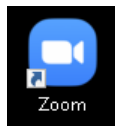
The Epson Document Camera (shown to the left) can be used to connect to a Zoom meeting using the following steps.

Using Zoom with the Epson Document Camera and Interactive White Board.

1. To begin, make certain the document camera and the projector are both powered on. The projector will need to be on to use the speakers.
2. Tilt the document camera up so that the lens is facing you. You may turn on the light if needed, the light switch is on top of the camera.



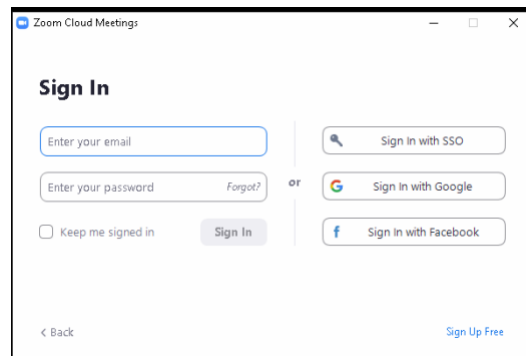
3. Launch ZOOM.



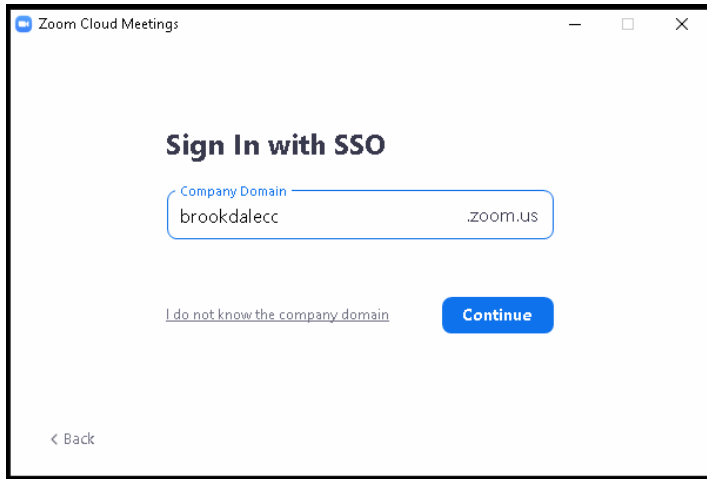
4. Click "Sign In"



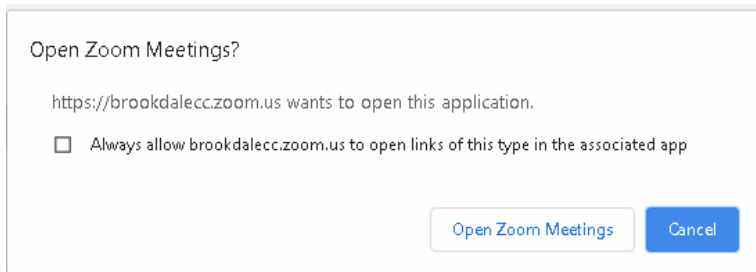
5. Click "Sign in with SSO"



6. Enter **brookdalecc** into the Company Domain field and Click “Continue”



7. When Prompted, Click Open Zoom Meetings.



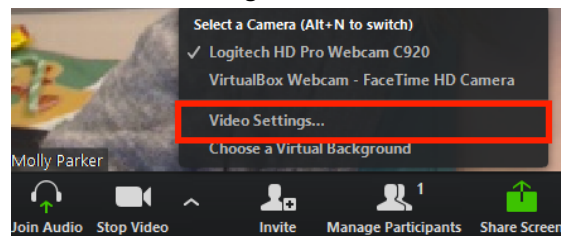
8. Zoom will now use the document camera and its built-in microphone as well as the speakers attached to the projector.

9. If necessary, rotate the camera image using Zoom. To do so:

- Click the **arrow** next to Stop Video.



- Choose **Video Settings**.

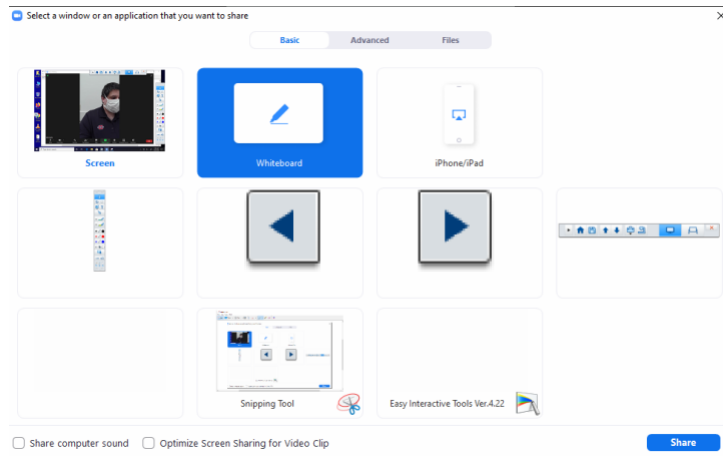


- Hover over the preview of your camera and click **Rotate 90°** until your video is rotated correctly.



Camera: HD Pro Webcam C920

10. To use the interactive functionality, within ZOOM, click on Share Screen and select Whiteboard. This will be ZOOM's built in Whiteboard, the interactive pens will be able to control this white board.



11. If the intent is to use the Whiteboard in the classroom it is recommend that a wireless headset with microphone is used. The document camera microphone will have difficulty picking up your voice if your back is to it while working on the Whiteboard.